

F.A.P. RTE.	SECTION	COUNTY	TOTAL SHEETS	SHEET NO.
376	120 R-I-1	COOK	18	1
FED. ROAD DIST. NO. 1 ILLINOIS			CONTRACT NO. 60J54	

STATE OF ILLINOIS
DEPARTMENT OF TRANSPORTATION
DIVISION OF HIGHWAYS

**PROPOSED
HIGHWAY PLANS**

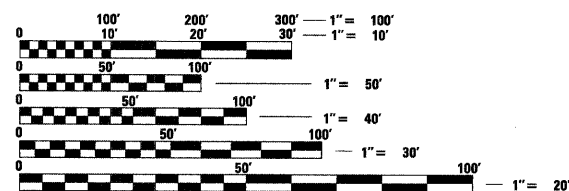
FAP 335 / IL60 (KENNEDY RD) AT MIDDLE FORK NB CHICAGO RIVER
BRIDGE DECK OVERLAY
SECTION 120 R-I-1
PROJECT NO.: *NHF-0335(016)*
LAKE COUNTY
C-91-244-10

FOR INDEX OF SHEETS, SEE SHEET NO. 2

TRAFFIC DATA:

EXISTING ADT IL 60 23900 (2007)
POSTED SPEED = 40 MPH

PROJECT IS LOCATED IN THE
CITY OF LAKE FOREST



FULL SIZE PLANS HAVE BEEN PREPARED USING STANDARD ENGINEERING SCALES. REDUCED SIZED PLANS WILL NOT CONFORM TO STANDARD SCALES. IN MAKING MEASUREMENTS ON REDUCED PLANS, THE ABOVE SCALES MAY BE USED.

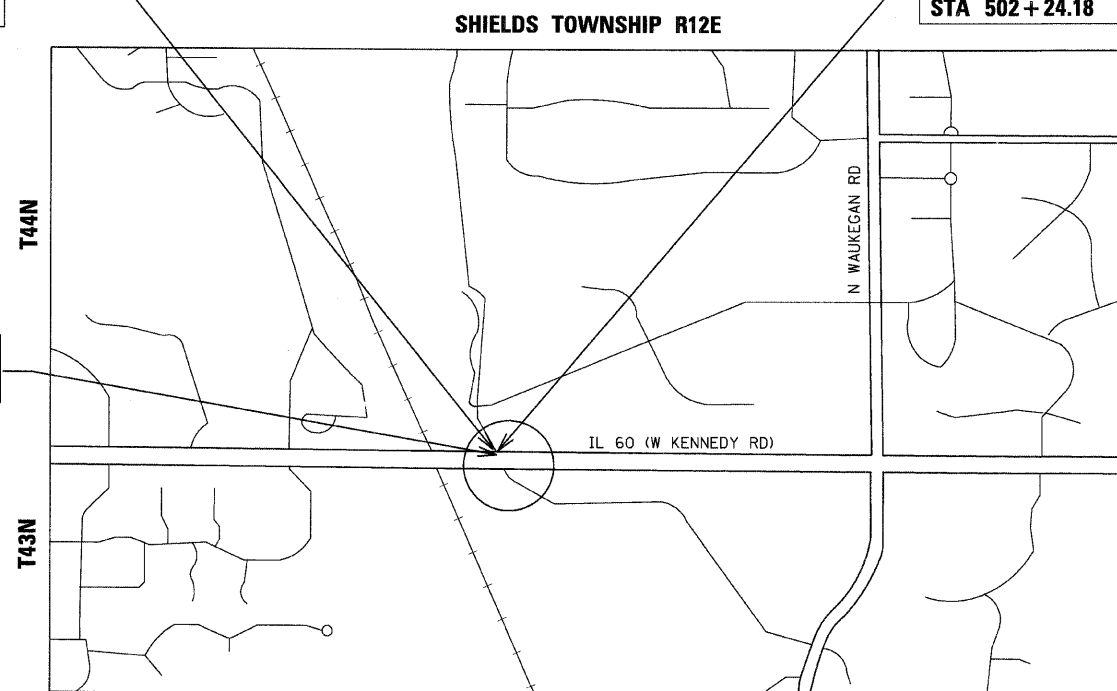
J.U.L.I.E.
JOINT UTILITY LOCATION INFORMATION FOR EXCAVATION
1-800-892-0123 OR 811

PROJECT MANAGER RAJENDRA SHAH (847) 705-4555
PROJECT ENGINEER MICHELLE AQUINO (847) 705-4606
CONTRACT NO. 60J54

PROJECT LOCATION
IL 60 (KENNEDY RD) OVER
NORTH BRANCH CHICAGO RIVER
STRUCTURE NO. 049-0037

IMPROVEMENTS BEGINS
STA 501 + 25.82

IMPROVEMENTS ENDS
STA 502 + 24.18



WEST DEERFIELD TOWNSHIP R12E
LOCATION MAP
NOT TO SCALE

GROSS LENGTH OF PROJECT = 98.36 FEET = 0.019 MILES
NET LENGTH OF PROJECT = 98.36 FEET = 0.019 MILES



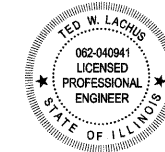
STATE OF ILLINOIS
DEPARTMENT OF TRANSPORTATION
DIVISION OF HIGHWAYS

SUBMITTED JANUARY 20 10
Debra M. O'Keefe
DEPUTY DIRECTOR OF HIGHWAYS, REGION ENGINEER

March 19 2010
Scott E. Stitt DE, Inc
ACTING ENGINEER OF DESIGN AND ENVIRONMENT

March 19 2010
Christine M. Reed, Inc
DIRECTOR OF HIGHWAYS, CHIEF ENGINEER

PRINTED BY THE AUTHORITY
OF THE STATE OF ILLINOIS



Ted W. Lachus
TED W. LACHUS, P.E.
EXPIRES 11-30-2011
DATE 1-29-2010

Primera
100 S. WACKER DRIVE SUITE 700, CHICAGO IL 60606.
P:312-606-0910 F:312-606-0415