

F.A.P. RTE.	SECTION	COUNTY	TOTAL SHEETS	SHEET NO.
376	120 R-I-1	COOK	18	1
FED. ROAD DIST. NO. 1 ILLINOIS			CONTRACT NO. 60J54	

STATE OF ILLINOIS
DEPARTMENT OF TRANSPORTATION
DIVISION OF HIGHWAYS

**PROPOSED
HIGHWAY PLANS**

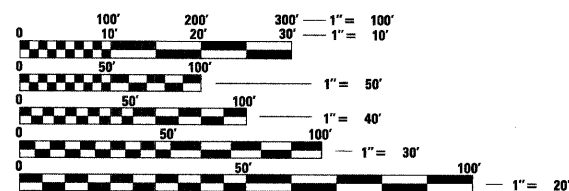
FAP 335 / IL60 (KENNEDY RD) AT MIDDLE FORK NB CHICAGO RIVER
BRIDGE DECK OVERLAY
SECTION 120 R-I-1
PROJECT NO.: *NHF-0335(016)*
LAKE COUNTY
C-91-244-10

FOR INDEX OF SHEETS, SEE SHEET NO. 2

TRAFFIC DATA:

EXISTING ADT IL 60 23900 (2007)
POSTED SPEED = 40 MPH

PROJECT IS LOCATED IN THE
CITY OF LAKE FOREST



FULL SIZE PLANS HAVE BEEN PREPARED USING STANDARD ENGINEERING SCALES. REDUCED SIZED PLANS WILL NOT CONFORM TO STANDARD SCALES. IN MAKING MEASUREMENTS ON REDUCED PLANS, THE ABOVE SCALES MAY BE USED.

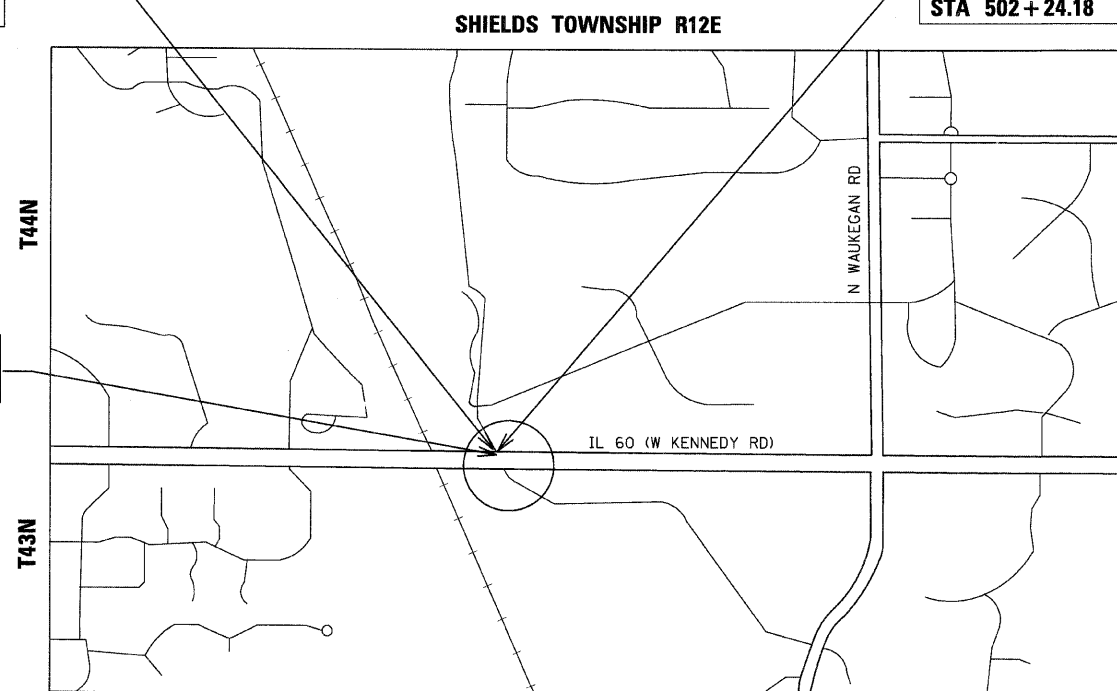
J.U.L.I.E.
JOINT UTILITY LOCATION INFORMATION FOR EXCAVATION
1-800-892-0123 OR 811

PROJECT MANAGER RAJENDRA SHAH (847) 705-4555
PROJECT ENGINEER MICHELLE AQUINO (847) 705-4606
CONTRACT NO. 60J54

PROJECT LOCATION
IL 60 (KENNEDY RD) OVER
NORTH BRANCH CHICAGO RIVER
STRUCTURE NO. 049-0037

IMPROVEMENTS BEGINS
STA 501 + 25.82

IMPROVEMENTS ENDS
STA 502 + 24.18



WEST DEERFIELD TOWNSHIP R12E
LOCATION MAP
NOT TO SCALE

GROSS LENGTH OF PROJECT = 98.36 FEET = 0.019 MILES
NET LENGTH OF PROJECT = 98.36 FEET = 0.019 MILES



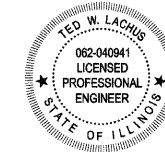
STATE OF ILLINOIS
DEPARTMENT OF TRANSPORTATION
DIVISION OF HIGHWAYS

SUBMITTED JANUARY 20 10
Debra M. O'Keefe
DEPUTY DIRECTOR OF HIGHWAYS, REGION ENGINEER

March 19 2010
Scott E. Stitt DE, Inc
ACTING ENGINEER OF DESIGN AND ENVIRONMENT

March 19 2010
Christine M. Reed, Inc
DIRECTOR OF HIGHWAYS, CHIEF ENGINEER

PRINTED BY THE AUTHORITY
OF THE STATE OF ILLINOIS



Ted W. Lachus
TED W. LACHUS, P.E.
EXPIRES 11-30-2011

1-29-2010
DATE

Primera
100 S. WACKER DRIVE SUITE 700, CHICAGO IL 60606.
P:312-606-0910 F:312-606-0415

INDEX OF SHEETS

- 1 COVER SHEET
- 2 INDEX OF SHEETS AND GENERAL NOTES
- 3 SUMMARY OF QUANTITIES
- 4 MOT GENERAL NOTES & CONSTRUCTION SEQUENCING
- 5 SUGGESTED STAGE OF CONSTRUCTION, STAGE 1
- 6 SUGGESTED STAGE OF CONSTRUCTION, STAGE 2
- 7 PAVEMENT MARKINGS
- 8 GENERAL PLAN AND ELEVATION
- 9 STAGE CONSTRUCTION DETAILS
- 10 TEMPORARY CONCRETE BARRIER
- 11 BRIDGE DECK PATCHING & APPROACH PATCHING PLAN AND TRANSVERSE JOINT RECONSTRUCTION DETAILS
- 12 BRIDGE DECK & APPROACH IMPROVEMENT PLAN
- 13 ABUTMENTS REPAIR DETAILS
- 14 TC-10 DISTRICT ONE TRAFFIC CONTROL AND PROTECTION FOR SIDE ROADS, INTERSECTIONS AND DRIVEWAYS
- 15 TC-11 DISTRICT ONE TYPICAL APPLICATIONS RAISED REFLECTIVE PAVEMENT MARKERS
- 16 TC-13 DISTRICT ONE TYPICAL PAVEMENT
- 17 TC-22 DISTRICT ONE ARTERIAL ROAD INFORMATION SIGN
- 18 BD-24 DISTRICT ONE CURB AND GUTTER REMOVAL AND REPLACEMENT
- 18A. BD-400-05 DISTRICT ONE BUTT JOINT AND HMA TAPER DETAILS**

STATE STANDARDS

- 000001-05 STANDARD SYMBOLS, ABBREVIATIONS AND PATTERNS
- 001001-02 AREAS OF REINFORCEMENT BARS
- 001006 DECIMAL OF AN INCH AND OF A FOOT
- 701311-03 LANE CLOSURE 2 LANE 2 WAY MOVING OPERATIONS DAY ONLY
- 701606-06 URBAN LANE CLOSURE, MULTILANE, 2W, WITH MOUNTABLE MEDIAN
- 701901-01 TRAFFIC CONTROL DEVICES

GENERAL NOTES:

1. THESE PLANS HAVE BEEN PREPARED FROM INFORMATION ACQUIRED FROM EXISTING PLANS AND NOTES RECEIVED FROM IDOT FIELD MAINTENANCE ENGINEERS.
2. PLAN DIMENSIONS AND DETAILS RELATIVE TO EXISTING PLANS ARE SUBJECT TO VARIATIONS FOUND IN THE FIELD. THE CONTRACTOR SHALL FIELD VERIFY EXISTING DIMENSIONS AND DETAILS AFFECTING NEW CONSTRUCTION AND MAKE NECESSARY ADJUSTMENTS PRIOR TO CONSTRUCTION OR ORDERING MATERIALS. ANY ADJUSTMENTS PROPOSED BY THE CONTRACTOR MUST BE APPROVED BY THE ENGINEER. SUCH VARIATIONS SHALL NOT BE CAUSE FOR ADDITIONAL COMPENSATION FOR A CHANGE IN THE SCOPE OF THE WORK, HOWEVER, THE CONTRACTOR WILL BE PAID FOR THE QUANTITY ACTUALLY FURNISHED BASED UPON THE UNIT PRICE.
3. QUANTITIES FOR DECK SLAB REPAIR ARE APPROXIMATE. LOCATIONS WILL BE DETERMINED BY THE ENGINEER FOLLOWING REMOVAL OF THE HMA SURFACE COURSE AND HYDRO-SCARIFICATION. ACTUAL REPAIR LOCATIONS SHALL BE SHOWN ON THE AS-BUILT PLANS.
4. FORTY- EIGHT HOURS BEFORE STARTING EXCAVATION, THE CONTRACTOR WILL CALL J.U.L.I.E. (1-800-892-0123) OR 811 FOR LOCATIONS OF THE EXISTING UTILITIES.
5. THE CONTRACTOR WILL NOT BE ALLOWED TO SET UP A YARD OR FIELD OFFICE ON STATE PROPERTY WITHOUT WRITTEN PERMISSION FROM THE DEPARTMENT.
6. SAW CUTTING PRIOR TO ANY REMOVAL ITEMS NOTED ON THE PLANS OR DIRECTED BY THE ENGINEER SHALL BE CONSIDERED INCLUDED IN THE COST OF THE ITEMS BEING REMOVED.
7. DO NOT SCALE PLANS FOR CONSTRUCTION DIMENSIONS.
8. THE CONTRACTOR SHALL USE CARE IN REMOVING OR EXCAVATING NEAR ALL EXISTING ITEMS WHICH WILL REMAIN. ANY DAMAGE DONE TO EXISTING ITEMS BY THE CONTRACTOR SHALL BE REPAIRED AT THE CONTRACTOR'S EXPENSE.
9. WHEN ARTIFICIAL LIGHTING IS UTILIZED IN NIGHT OPERATIONS, THE CONTRACTOR SHALL EXERCISE THE UTMOST PRECAUTIONS IN PREVENTING ADVERSE VISIBILITY TO THE MOTORING PUBLIC AS WELL AS ADJOINING RESIDENTIAL AREAS.
10. THE CONTRACTOR SHALL OBTAIN ALL NECESSARY PERMITS, AS REQUIRED, PRIOR TO COMMENCING WITH CONSTRUCTION.
11. THE CONTRACTOR SHALL TAKE ALL NECESSARY MEASURES TO ASSURE THAT NO DEBRIS FALLS INTO THE CREEK. THE COST OF THIS WORK SHALL BE INCLUDED IN THE VARIOUS PAY ITEMS.
12. THE CONTRACTOR SHALL CONTACT THE TRAFFIC CONTROL SUPERVISOR AT (847) 705-4470 A MINIMUM OF 72 HOURS PRIOR TO THE PLACEMENT OF ANY TEMPORARY TRAFFIC CONTROL DEVICES.
13. THE CONTRACTOR SHALL CONTACT DEBBIE HANLON, THE AREA TRAFFIC FIELD ENGINEER, AT (847)438-2300 TWO (2) WEEKS PRIOR TO THE PLACEMENT OF PERMANENT PAVEMENT MARKINGS.
14. ALL DAMAGE TO EXISTING PAVEMENT MARKINGS OUTSIDE THE REMOVAL LINE SHOWN ON THE PLANS SHALL BE REPLACED AT THE CONTRACTOR'S EXPENSE.
15. ALL RAISED REFLECTIVE PAVEMENT MARKERS (BRIDGE) SHALL BE LOW PROFILE.
16. ACCESS SHALL BE PROVIDED AT ALL TIMES TO PROPERTIES ABUTTING THE PROPOSED IMPROVEMENT.

COMMITMENTS

NONE

HOT-MIX ASPHALT MIXTURE REQUIREMENTS	
MIXTURE TYPE	AIR VOIDS
SURFACE COURSE	
HOT-MIX ASPHALT SURFACE COURSE, MIX "F", N70 <i>POLYMERIZED</i>	4% @ 90 Gyr.

THE UNIT WEIGHT USED TO CALCULATE ALL HMA SURFACE MIXTURE QUANTITIES IS 112 LBS/SQ YD/IN.

The "AC Type" for Polymerized HMA Mixes SHALL BE "SBS/SBR PG 70 -22" AND FOR NON-POLYMERIZED HMA THE "AC TYPE" shall be "PG 64 -22" UNLESS modified by District ONE Special Provisions. FOR "PERCENT OF RAP" SEE DISTRICT ONE SPECIAL PROVISIONS.


Note: For proposed section see sheet number S4.

SUMMARY OF QUANTITIES			URBAN 80% FED. 20% STATE	CONSTRUCTION TYPE CODE	
CODE NO.	ITEM DESCRIPTION	UNIT		TOTAL QUANTITY	049-0037 SFTY-2A QUANTITY
40603595	POLYMERIZED HOT-MIX ASPHALT SURFACE COURSE, MIX D, N-90	TON	66	66	
40600982	HOT-MIX ASPHALT SURFACE REMOVAL - BUTT JOINT	SQ YD	358	358	
42001300	PROTECTIVE COAT	SQ YD	227	227	
44001700	COMBINATION CURB AND GUTTER REMOVAL AND REPLACEMENT	FOOT	20	20	
50300260	BRIDGE DECK GROOVING	SQ YD	218	218	
59000200	EPOXY CRACK INJECTION	FOOT	29	29	
67000400	ENGINEER'S FIELD OFFICE, TYPE A	CAL MO	3	3	
67100100	MOBILIZATION	L SUM	1	1	
70101800	TRAFFIC CONTROL AND PROTECTION, (SPECIAL)	L SUM	1	1	
70103815	TRAFFIC CONTROL SURVEILLANCE	CAL DA	20	20	
70106800	CHANGEABLE MESSAGE SIGN	CAL MO	10	10	
70301000	WORK ZONE PAVEMENT MARKING REMOVAL	SQ FT	2530	2530	
* 78000200	THERMOPLASTIC PAVEMENT MARKING - LINE 4"	FOOT	3502	3502	
* 78000600	THERMOPLASTIC PAVEMENT MARKING - LINE 12"	FOOT	44	44	

SUMMARY OF QUANTITIES			URBAN 80% FED. 20% STATE	CONSTRUCTION TYPE CODE	
CODE NO.	ITEM DESCRIPTION	UNIT		TOTAL QUANTITY	049-0037 SFTY-2A QUANTITY
* 78006110	PREFORMED THERMOPLASTIC PAVEMENT MARKING - LINE 4"	FOOT	10	10	
* 78100100	RAISED REFLECTIVE PAVEMENT MARKER	EACH	107	107	
* 78100105	RAISED REFLECTIVE PAVEMENT MARKER (BRIDGE)	EACH	6	6	
78300100	PAVEMENT MARKING REMOVAL	SQ FT	1215	1215	
78300200	RAISED REFLECTIVE PAVEMENT MARKER REMOVAL	EACH	113	113	
X0320887	POLYMER CONCRETE	CU FT	7	7	
X0322256	TEMPORARY INFORMATION SIGNING	SQ FT	51	51	
X0322185	BRIDGE DECK LATEX CONCRETE OVERLAY, 2 1/4 INCHES	SQ YD	227	227	
X0326766	CLEAN AND RESEAL RELIEF JOINT	FOOT	92	92	
X0325305	STRUCTURAL REPAIR CONCRETE (DEPTH EQUAL TO OR LESS THAN 5 INCHES)	SQ FT	76	76	
X0325775	WET REFLECTIVE TEMPORARY TAPE, TYPE III, 4 INCH	FOOT	7950	7950	
Z0001700	APPROACH SLAB REPAIR (FULL DEPTH)	SQ YD	13	13	
Z0001800	APPROACH SLAB REPAIR (PARTIAL DEPTH)	SQ YD	4	4	
Z0006204	BRIDGE DECK HYDRO-SCARIFICATION 1/2"	SQ YD	227	227	

* Specialty Items

MAINTENANCE OF TRAFFIC GENERAL NOTES

1. THE MAINTENANCE OF TRAFFIC CONTROL (MOT) PLANS SHALL SERVE AS A GUIDE FOR SAFE DIVERSION OF TRAFFIC DURING EXECUTION OF THIS CONTRACT. HOWEVER, THE CONTRACTOR MAY MODIFY THE MOT PLANS TO MEET CONSTRUCTION NEEDS BUT NOT AT THE EXPENSE OF PUBLIC SAFETY OR CONVENIENCE. ANY CHANGES TO THE MOT PLANS SHALL BE SUBMITTED TO THE ENGINEER FOR APPROVAL.
2. THE ENGINEER SHALL BE INFORMED 48 HOURS IN ADVANCE OF ANY CHANGE TO THE MOT PLANS.
3. ALL EXISTING PAVEMENT MARKING IN CONFLICT WITH THE MAINTENANCE OF TRAFFIC STRIPING SHALL BE REMOVED. THIS WORK WILL BE PAID FOR AT THE CONTRACT UNIT PRICE PER SQUARE FOOT, "PAVEMENT MARKING REMOVAL".
4. THE CONTRACTOR SHALL REMOVE ALL TEMPORARY PAVEMENT MARKING TAPE WHICH CONFLICT WITH THE NEXT STAGE OR FINAL STRIPING. REMOVAL OF TEMPORARY PAVEMENT MARKING TAPE WILL BE PAID FOR AT THE CONTRACT UNIT PRICE PER SQUARE FOOT, "WORK ZONE PAVEMENT MARKING REMOVAL".
5. ALL TRAFFIC CONTROL DEVICES USED FOR THE MAINTENANCE OF TRAFFIC, AS DETAILED ON THE PLANS, OR HIGHWAY STANDARD SHALL BE REFLECTORIZED PRIOR TO INSTALLATION AND CLEANED AS SPECIFIED IN MAINTENANCE OF TRAFFIC SPECIAL PROVISIONS OR AS DIRECTED BY THE ENGINEER.
6. ALL DRUMS, VERTICAL PANELS AND BARRICADES ADJECENT TO THE EDGE OF TRAVELED WAY SHALL BE EQUIPPED WITH STEADY-BURNING LIGHTS.
7. ALL EXISTING SIGNS WITHIN THE LIMITS OF MAINTENANCE OF TRAFFIC WHICH ARE OBSCURED BY OR OTHERWISE INTERFERED WITH BY THE CONSTRUCTION OPERATIONS AND MAINTENANCE OF TRAFFIC, SHALL BE COVERED OR REMOVED BY THE CONTRACTOR UNLESS SPECIFIED IN THE PLANS OR WHEN DIRECTED BY THE ENGINEER. THIS WORK SHALL BE IN ACCORDANCE WITH ARTICLE 107.25 OF THE IDOT STANDARD SPECIFICATIONS.
8. TEMPORARY, OFF-PEAK HOUR LANE CLOSURES MUST BE REQUESTED THROUGH THE ENGINEER AND AS SPECIFIED IN THE SPECIAL PROVISIONS, WHEN OFF-PEAK HOUR OR WEEKEND LANE CLOSURES ARE REQUIRED, A PORTABLE CHANGEABLE MESSAGE SIGN SHALL BE INSTALLED ONE WEEK PRIOR TO THE CLOSURE. THE MESSAGE SIGN WORDING AND LOCATION WILL BE DETERMINED BY THE ENGINEER.
9. THE CONTRACTOR SHALL PLACE A CHANGEABLE MESSAGE SIGN AT EACH END OF THE PROJECT AND/OR AS DIRECTED BY THE ENGINEER TO INFORM MOTORISTS OF UPCOMING CONSTRUCTION ACTIVITIES. THE MESSAGE SIGNS WITH THE APPROPRIATE INFORMATION SHALL BE IN PLACED TWO WEEKS BEFORE START OF CONSTRUCTION ACTIVITY. THIS WORK IS TO BE PAID FOR AT THE CONTRACT UNIT PRICE PER CALENDAR MONTH, "CHANGEABLE MESSAGE SIGN".
10. ALL TEMPORARY INFORMATION SIGNS SHALL BE PAID FOR SEPARATELY AT THE CONTRACT UNIT PRICE PER SQUARE FOOT FOR "TEMPORARY INFORMATION SIGNING".
11. FOR ADDITIONAL BRIDGE CONSTRUCTION STAGING INFORMATION, SEE STRUCTURAL PLANS.
12. THE FIRST TWO WARNINGS SIGNS IN EACH DIRECTION MUST HAVE A MONO-DIRECTIONAL FLASHING BEACON THAT OPERATES DURING HOURS OF DARKNESS. 

SUGGESTED CONSTRUCTION SEQUENCING

PRESTAGE

CONSTRUCTION:
IMPLEMENT STAGE 1 MOT PAVEMENT MARKING AND TRAFFIC CONTROL

MAINTENANCE OF TRAFFIC:
UTILIZE STANDARDS 701606-06 AND 701311-03

STAGE 1

CONSTRUCTION:
WESTBOUND LANES: HYDROSCARIFY BRIDGE DECK SURFACE, PERFORM DECK REPAIRS, PLACE LATEX CONCRETE OVERLAY AND PERFORM SUBSTRUCTURE REPAIRS.

MAINTENANCE OF TRAFFIC:
UTILIZE MAINTENANCE OF TRAFFIC DETAILS IN THE PLANS AND STANDARD 701606-06

STAGE 2


CONSTRUCTION:
EASTBOUND LANES: HYDROSCARIFY BRIDGE DECK SURFACE, PERFORM DECK REPAIRS. PLACE LATEX CONCRETE OVERLAY, AND PERFORM SUBSTRUCTURE REPAIRS.

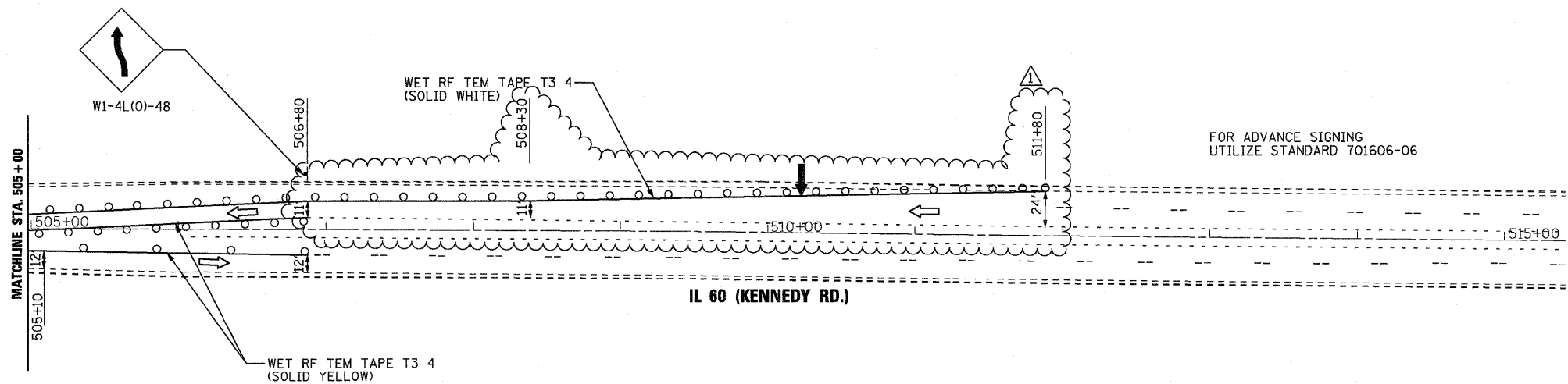
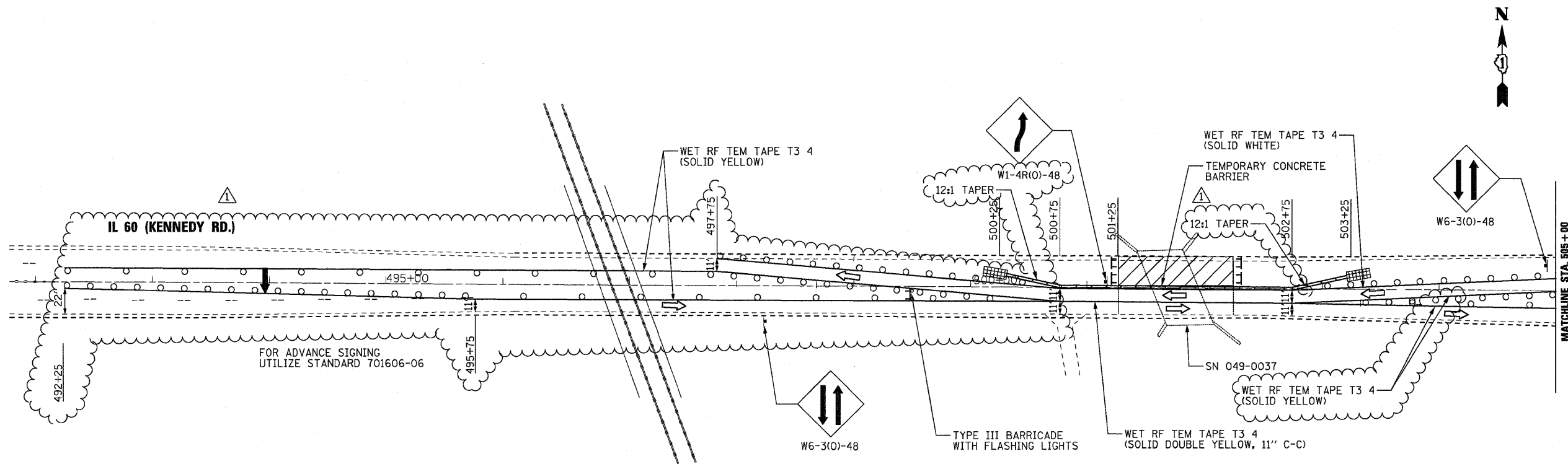
MAINTENANCE OF TRAFFIC:
UTILIZING MAINTENANCE OF TRAFFIC DETAILS IN THE PLANS AND STANDARD 701606-06

STAGE 3

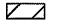







CONSTRUCTION:
PLACE FINAL PAVEMENT MARKINGS AND RAISED REFLECTIVE MARKERS.

MAINTENANCE OF TRAFFIC:
UTILIZE STANDARD 701606-06 AND 701311-03.

FILE NAME = *FILEL*		DESIGNED TWL	REVISED -	STATE OF ILLINOIS DEPARTMENT OF TRANSPORTATION	MOT GENERAL NOTES AND SUGGESTED CONSTRUCTION SEQUENCING				F.A.P. RTE.	SECTION	COUNTY	TOTAL SHEETS	SHEET NO.
		DRAWN JLS	REVISED -						335	120 R-I-1	LAKE	18	4
CHECKED SF	REVISED -	SCALE: SHEET NO. OF SHEETS STA. TO STA.				CONTRACT NO. 60J54							
DATE 1/29/2010	REVISED -	ILLINOIS FED. AID PROJECT											



LEGEND:

-  WORK AREA
-  TEMPORARY CONCRETE BARRIER
-  ARROW BOARD
-  SIGN
-  TYPE II BARRICADE OR DRUM WITH STEADY BURNING LIGHTS @ 50 FT CENTERS ALONG ROADWAY (TANGENT) AND 20 FT CENTERS ALONG TAPERS
-  TYPE III BARRICADE
-  IMPACT ATTENUATOR, TEMPORARY NON-REDIRECTIVE
-  DIRECTION OF TRAFFIC

FILE NAME =
#FILE#



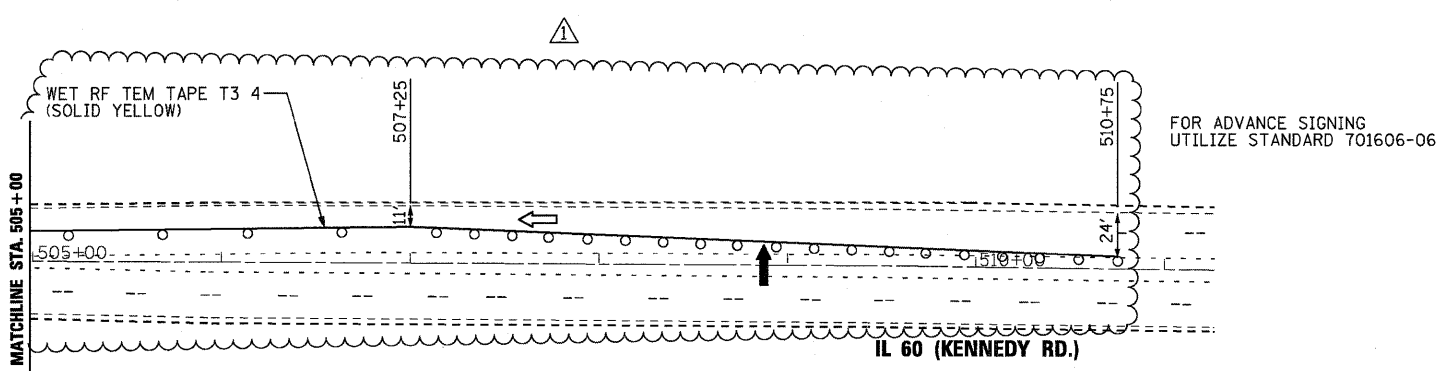
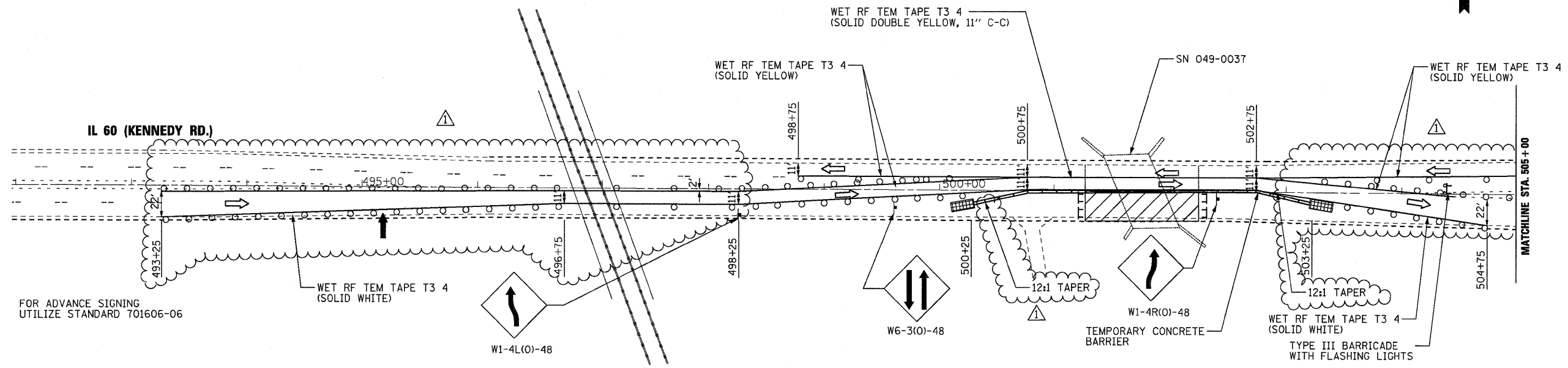
DESIGNED	TWL	REVISED	-	2/3/2010
DRAWN	JLS	REVISED	-	2/10/2010
CHECKED	SF	REVISED	-	2/22/2010
DATE	1/29/2010	REVISED	-	3/9/2010

STATE OF ILLINOIS
DEPARTMENT OF TRANSPORTATION

SUGGESTED STAGE OF CONSTRUCTION & TRAFFIC CONTROL
STAGE 1
IL 60 (KENNEDY RD.)

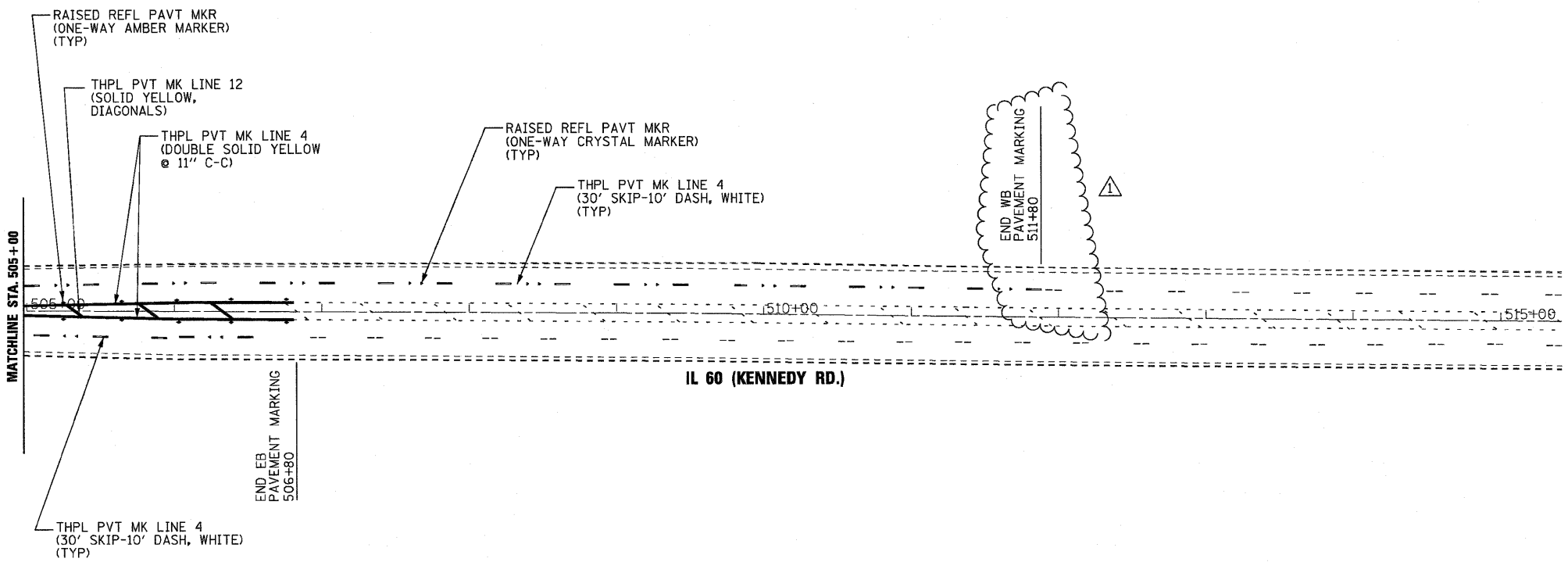
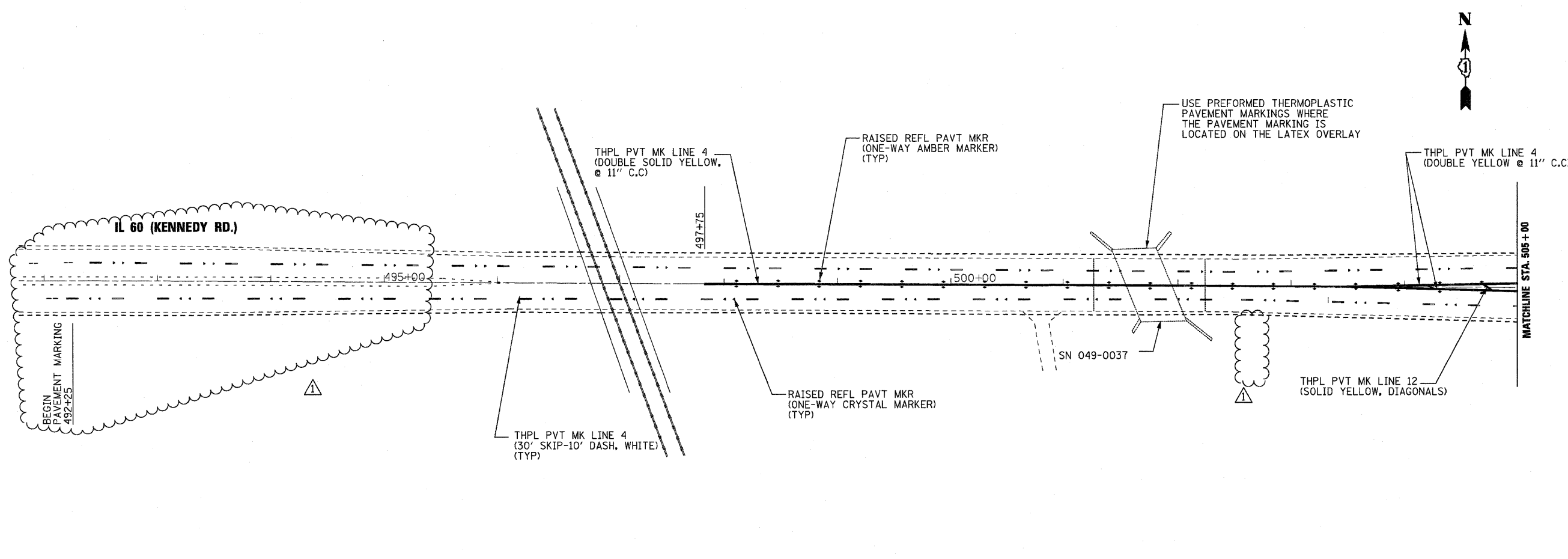
SCALE: SHEET NO. OF SHEETS STA. TO STA.

F.A.P. RTE.	SECTION	COUNTY	TOTAL SHEETS	SHEET NO.
335	120 R-1-1	LAKE	18	5
				CONTRACT NO. 60J54
ILLINOIS FED. AID PROJECT				



- LEGEND:**
- WORK AREA
 - TEMPORARY CONCRETE BARRIER
 - ARROW BOARD
 - SIGN
 - TYPE II BARRICADE OR DRUM WITH STEADY BURNING LIGHTS @ 50 FT CENTERS ALONG ROADWAY (TANGENT) AND 20 FT CENTERS ALONG TAPERS
 - TYPE III BARRICADE
 - IMPACT ATTENUATOR, TEMPORARY NON-REDIRECTIVE
 - DIRECTION OF TRAFFIC

FILE NAME = #FILE#		DESIGNED	TWL	REVISED	-	2/3/2010	STATE OF ILLINOIS DEPARTMENT OF TRANSPORTATION	SUGGESTED STAGE OF CONSTRUCTION & TRAFFIC CONTROL STAGE 2 IL 60 (KENNEDY RD.)			F.A.P. RTE.	SECTION	COUNTY	TOTAL SHEETS	SHEET NO.
		DRAWN	JLS	REVISED	-	2/10/2010		335	120 R-I-1	LAKE	18	6			
CHECKED	SF	REVISED	-	2/22/2010	SCALE: SHEET NO. OF SHEETS STA. TO STA.			ILLINOIS FED. AID PROJECT							
DATE	1/29/2010	REVISED	-	3/9/2010				CONTRACT NO. 60J54							



NOTES:

1. REFER TO DISTRICT 1 DETAILS "TYPICAL APPLICATIONS RAISED REFLECTIVE PAVEMENT MARKERS (SNOW-PLOW RESISTANT)" AND "TYPICAL PAVEMENT MARKING" FOR ADDITIONAL INFORMATION.
2. THE PROPOSED PAVEMENT MARKINGS SHALL BE PLACED IN THE SAME LOCATIONS AS THE EXISTING PAVEMENT MARKINGS OR AS DIRECTED BY THE ENGINEER

FILE NAME =
#FILE#



DESIGNED	TWL	REVISED	-
DRAWN	JLS	REVISED	- 2/10/2010
CHECKED	SF	REVISED	- 2/22/2010
DATE	1/29/2010	REVISED	- 3/9/2010

**STATE OF ILLINOIS
DEPARTMENT OF TRANSPORTATION**

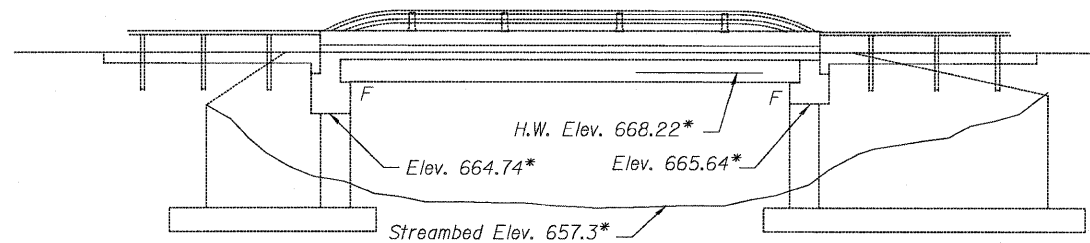
**PAVEMENT MARKING PLAN
IL 60 (KENNEDY RD.)**

SCALE: SHEET NO. OF SHEETS STA. TO STA.

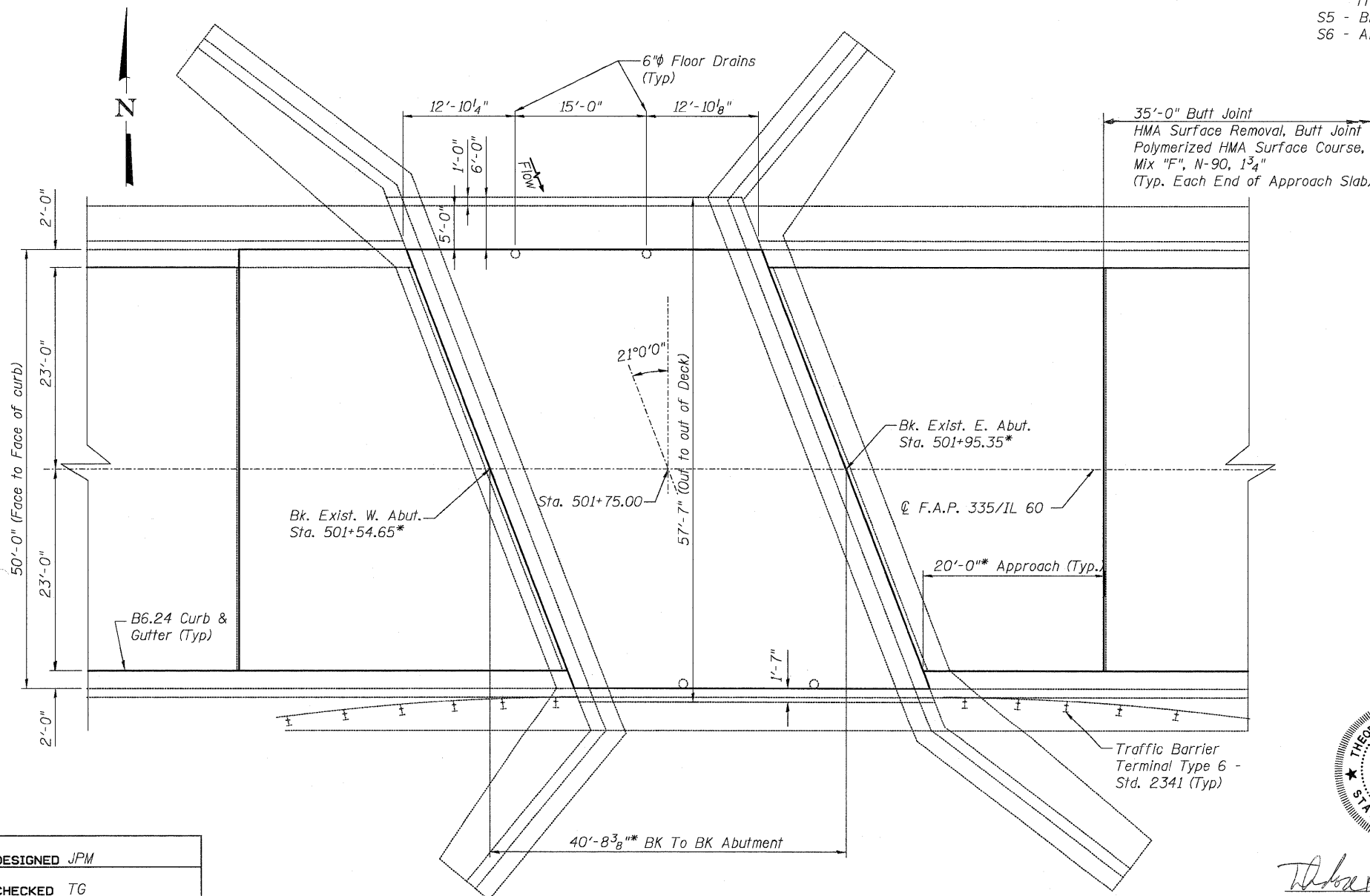
F.A.P. RTE.	SECTION	COUNTY	TOTAL SHEETS	SHEET NO.
335	120 R-1-1	LAKE	18	7
CONTRACT NO. 60J54				
ILLINOIS FED. AID PROJECT				

STATE OF ILLINOIS
DEPARTMENT OF TRANSPORTATION

Existing Structure: S.N. 049-0037, original bridge built as four lane single span structure in 1941. Reconstructed in 1987 with the superstructure completely replaced with Reinforced Concrete deck slab on Steel Beams as F.A.U. Rte. 1246 (IL Rte. 60), Sec. 119&120(R)-(85) at Sta. 501+75. The structure measures 40'-8³/₈"± Bk. to Bk. Abutments and 57'-7" Out to Out Deck. The substructures consists of Reinforced Concrete closed abutments. Traffic is to be maintained utilizing stage construction. One lane for each direction will be provided.



ELEVATION



PLAN

SCOPE OF WORK

1. Partial Depth Slab repairs.
2. Hydroscarify 1/2 inch bridge deck slab surface.
3. Reconstruction of transverse joints.
4. Place 2 1/4 inch latex concrete overlay.
5. Patch & Overlay approaches.
6. Structural Repairs of Concrete to substructures.

INDEX OF SHEETS

- S1 - General Plan & Elevation
- S2 - Stage Construction Details
- S3 - Temporary Concrete Barrier
- S4 - Bridge Deck & Approach Patching Plan and Transverse Joint Reconstruction Details
- S5 - Bridge Deck & Approach Improvement Plan
- S6 - Abutments Repairs

GENERAL NOTES

Plan dimensions and details relative to existing plans are subject to nominal construction variations. The Contractor shall field verify existing dimensions and details affecting new construction and make necessary approved adjustments prior to construction or ordering of materials. Such variations shall not be cause for additional compensation for a change in scope of the work, however, the Contractor will be paid for the quantity actually furnished at the unit price bid for the work.

Reinforcement bars shall conform to the requirements of ASTM A 706 Gr 60. See Special Provisions.

Reinforcement bars designated (E) shall be epoxy coated.

DESIGN SPECIFICATIONS

2002 AASHTO Standard Specifications, 17th Edition.

DESIGN STRESSES

FIELD UNITS

f'c = 3,500 psi
fy = 60,000 psi

LAST DELAMINATION SURVEY

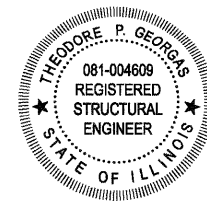
October 2009

TOTAL BILL OF MATERIAL

ITEM	UNIT	SUPER	SUB	TOTAL
Approach Slab Repair (Full Depth)	Sq. Yd.	13	-	13
Approach Slab Repair (Partial Depth)	Sq. Yd.	4	-	4
Bridge Deck Grooving	Sq. Yd.	218	-	218
Bridge Deck Hydro-scarification 1/2"	Sq. Yd.	227	-	227
Bridge Deck Latex Concrete Overlay, 2 1/4"	Sq. Yd.	227	-	227
Polymer Concrete	Cu. Ft.	7	-	7
Comb. Curb & Gutter Removal & Replacement	Foot	20	-	20
Epoxy Crack Injection	Foot	-	29	29
Polymerized Hot-Mix Asphalt Surface Course, Mix "F", N-90, 1 3/4"	Tons	66	-	66
Protective Coat	Sq. Yd.	227	-	227
Structural Repair of Concrete (Depth equal to or less 5 inches)	Sq. Ft.	-	76	76
Clean and Reseal Relief Joint	Foot	92	-	92
Hot-Mix Asphalt Surface Removal, Butt Joint	Sq. Yd.	358	-	358

GENERAL PLAN AND ELEVATION
FAP 335/ILL 60 (KENNEDY RD.)
OVER MIDDLE FORK OF N. BRANCH CHICAGO RIVER
LAKE COUNTY
STATION 501+75.00
STRUCTURE NO. 049-0037

DESIGNED	JPM
CHECKED	TG
DRAWN	MPS
CHECKED	JPM, TG

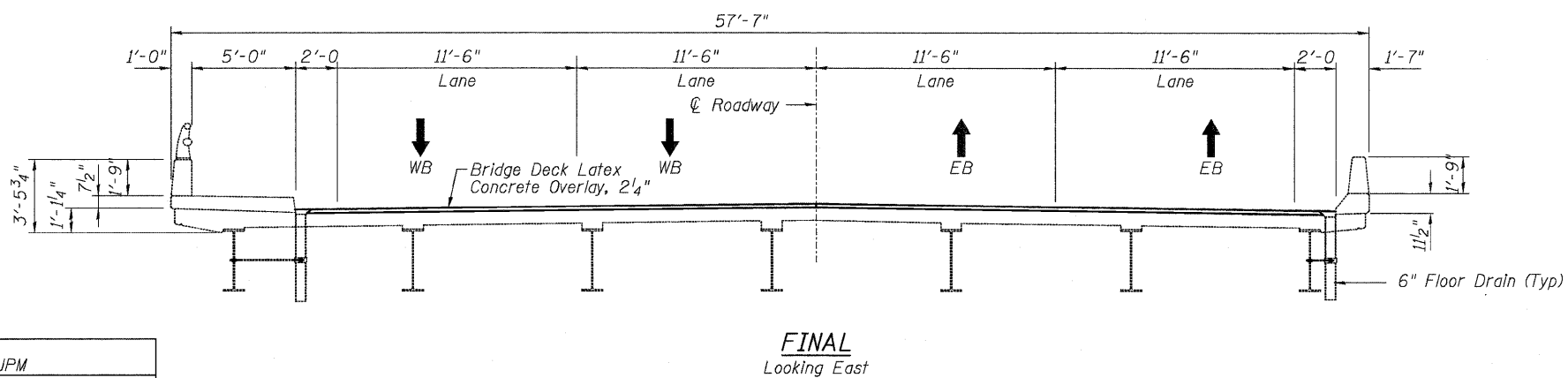
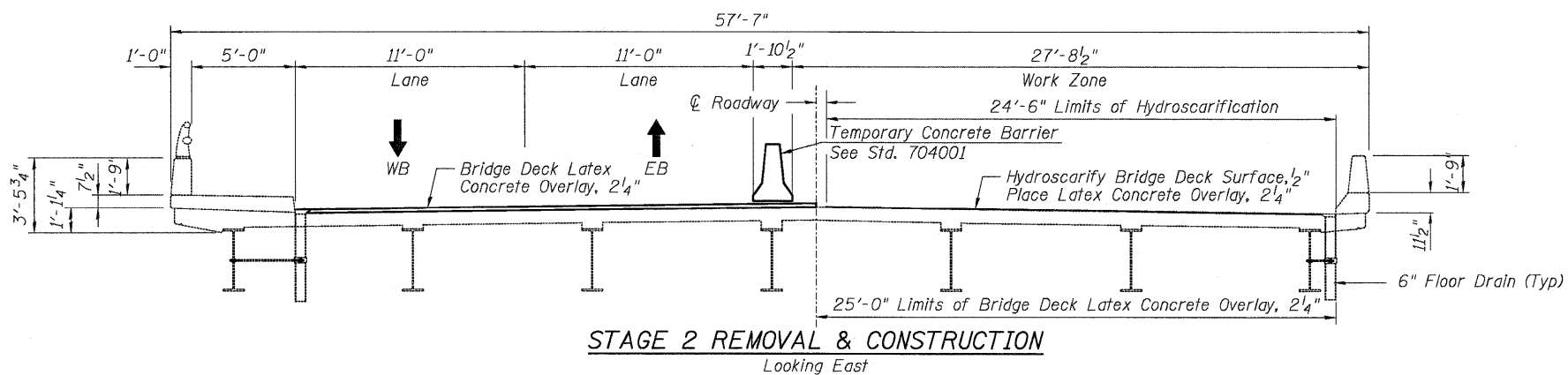
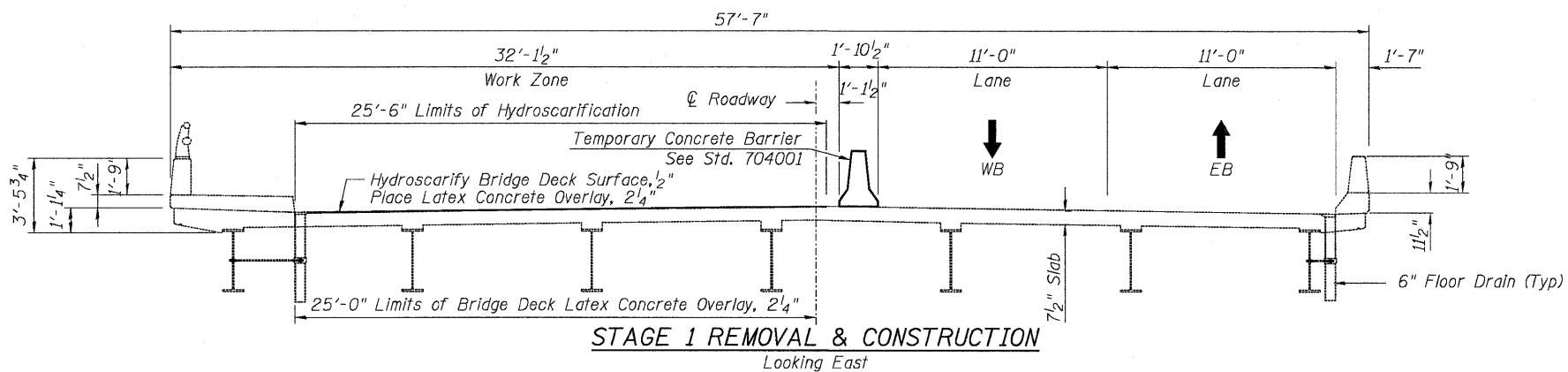
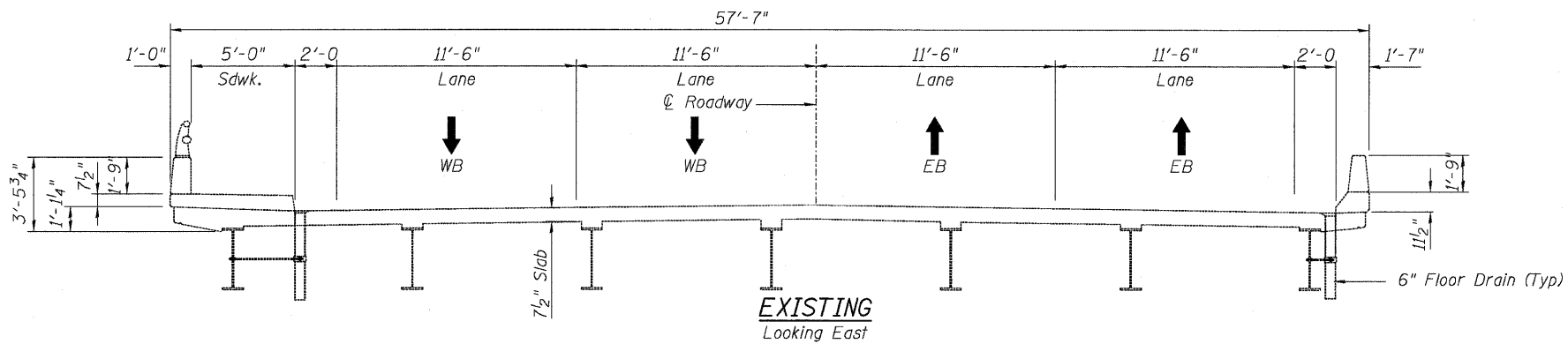


Theodore P. Georgas 3-1-10
Theodore P. Georgas Date
Licensed Structural Engineer
State of Illinois 081-4609
Expires 11/30/2010

* Information taken from 1987 existing plans.

SHEET NO. S1	F.A.P. RTE.	SECTION	COUNTY	TOTAL SHEETS	SHEET NO.
	335	120 R-I-1	LAKE	18	8
S6 SHEETS	CONTRACT NO. 60J54			ILLINOIS FED. AID PROJECT	

STATE OF ILLINOIS
DEPARTMENT OF TRANSPORTATION



LEGEND:

 Bridge Deck Hydro-scarification 1/2"

STAGE CONSTRUCTION DETAILS
STRUCTURE NO. 049-0037

DESIGNED	JPM
CHECKED	TG
DRAWN	MPS
CHECKED	JPM, TG

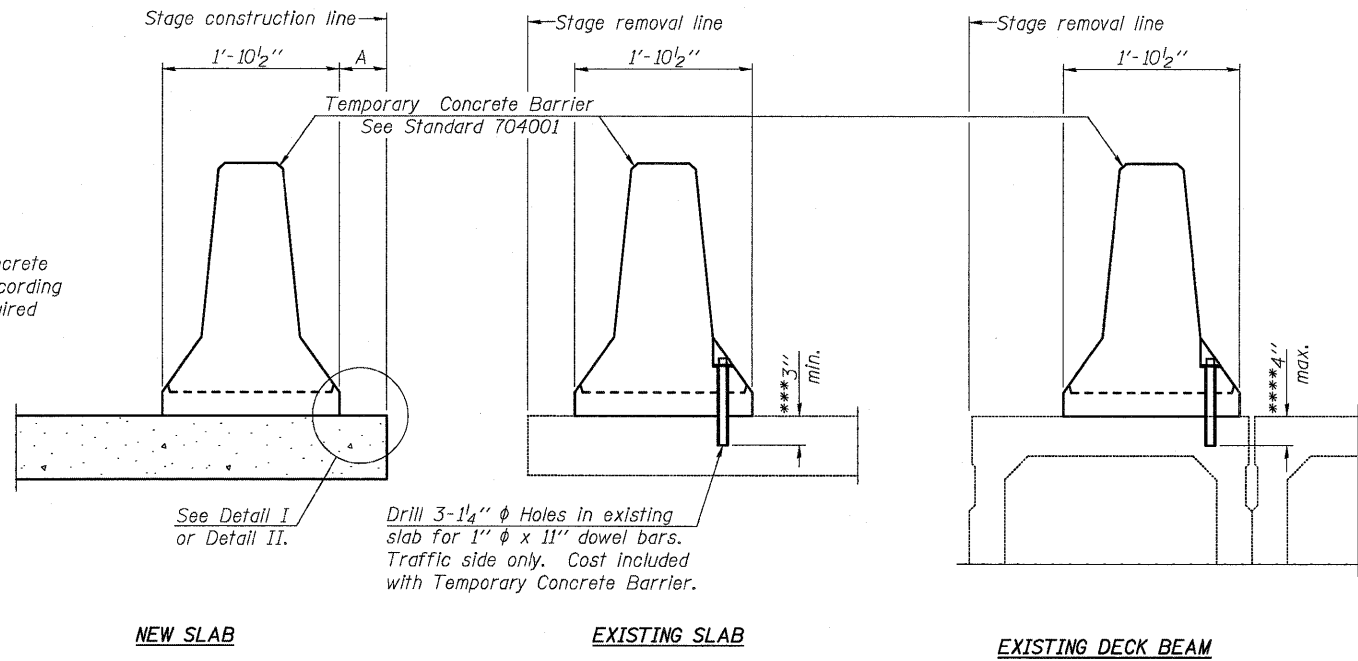


180 S. WACKER DRIVE SUITE 700 • CHICAGO IL 60606 • P.312-686-8918 F.312-686-8415

SHEET NO. S2	F.A.P. RTE.	SECTION	COUNTY	TOTAL SHEETS	SHEET NO.
	335	120 R-I-1	LAKE	18	9
S6 SHEETS	CONTRACT NO. 60J54			ILLINOIS FED. AID PROJECT	

STATE OF ILLINOIS
DEPARTMENT OF TRANSPORTATION

When "A" is 3'-6" or less, the temporary concrete barrier shall be anchored to the new slab according to Detail I or Detail II. No anchorage is required when "A" is greater than 3'-6".



Drill 3-1/4" ϕ Holes in existing slab for 1" ϕ x 11" dowel bars. Traffic side only. Cost Included with Temporary Concrete Barrier.

NOTES

Detail I - With Bar Splicer or Couplers:
Connect one (1) 1"x7"x10" steel PL to the top layer of couplers with 2-5/8" ϕ bolts screwed to coupler at approximate ϕ of each barrier panel.

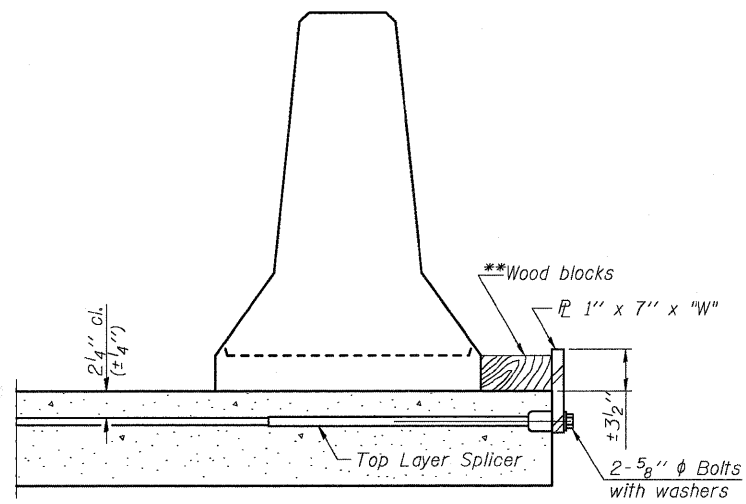
Detail II - With Extended Reinforcement Bars:
Connect one (1) 1"x7"x 10" steel PL to the concrete slab or concrete wearing surface with 2-5/8" ϕ Expansion Anchors or cast in place inserts spaced between the top layer of reinforcement at approximate ϕ of each barrier panel.

Cost of anchorage is included with Temporary Concrete Barrier. The 1" x 7" x 10" plate shall not be removed until stage II construction forms and all reinforcement bars are in place and the concrete is ready to be placed.

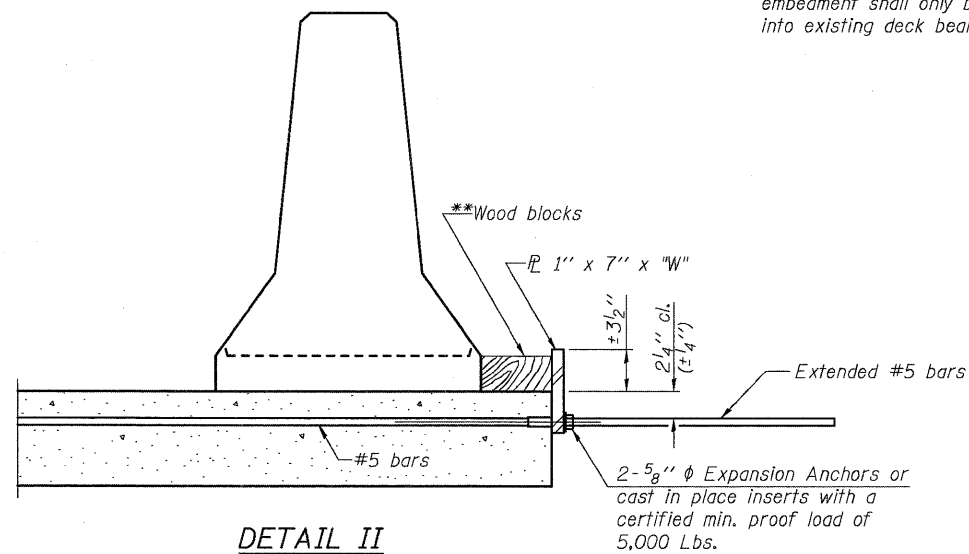
SECTIONS THRU SLAB OR DECK BEAM

*** Dimension shown is minimum required embedment into concrete. If hot-mix asphalt wearing surface is present, minimum embedment shall be in addition to wearing surface depth.

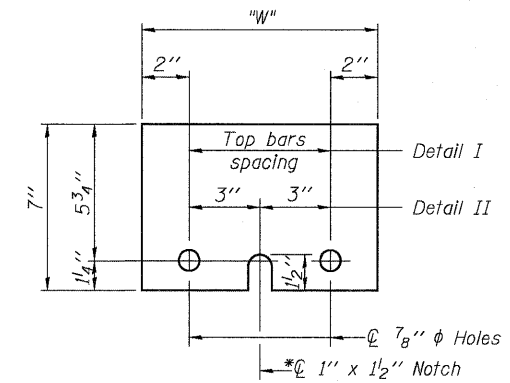
**** If existing deck beam is to remain in place after stage construction, embedment shall only be into wearing surface and not into existing deck beam concrete.



DETAIL I



DETAIL II



STEEL RETAINER PL 1" x 7" x 10"

* Required only with Detail II

** Wood blocks may be omitted when required to provide minimum stage traffic lane width. When the wood blocks are omitted, the concrete barrier shall be in direct contact with the steel retainer plate.

"W" = Top bars spacing + 4"

DESIGNED	JPM
CHECKED	TG
DRAWN	MPS
CHECKED	JPM, TG



180 S. WACKER DRIVE SUITE 700 • CHICAGO IL 60606 • P.312-686-8988 F.312-686-8415

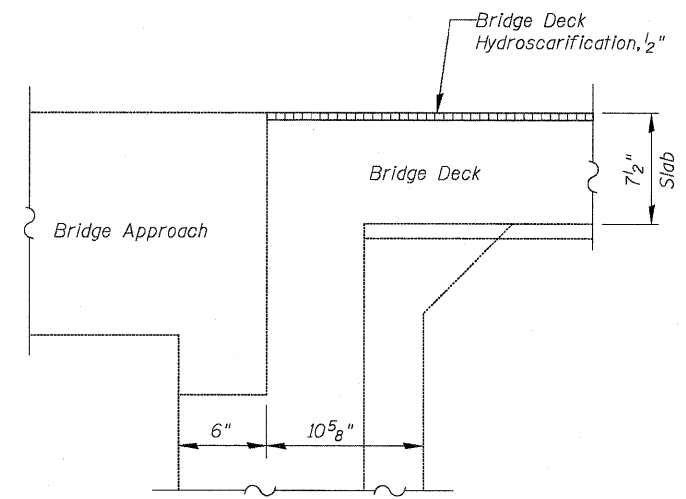
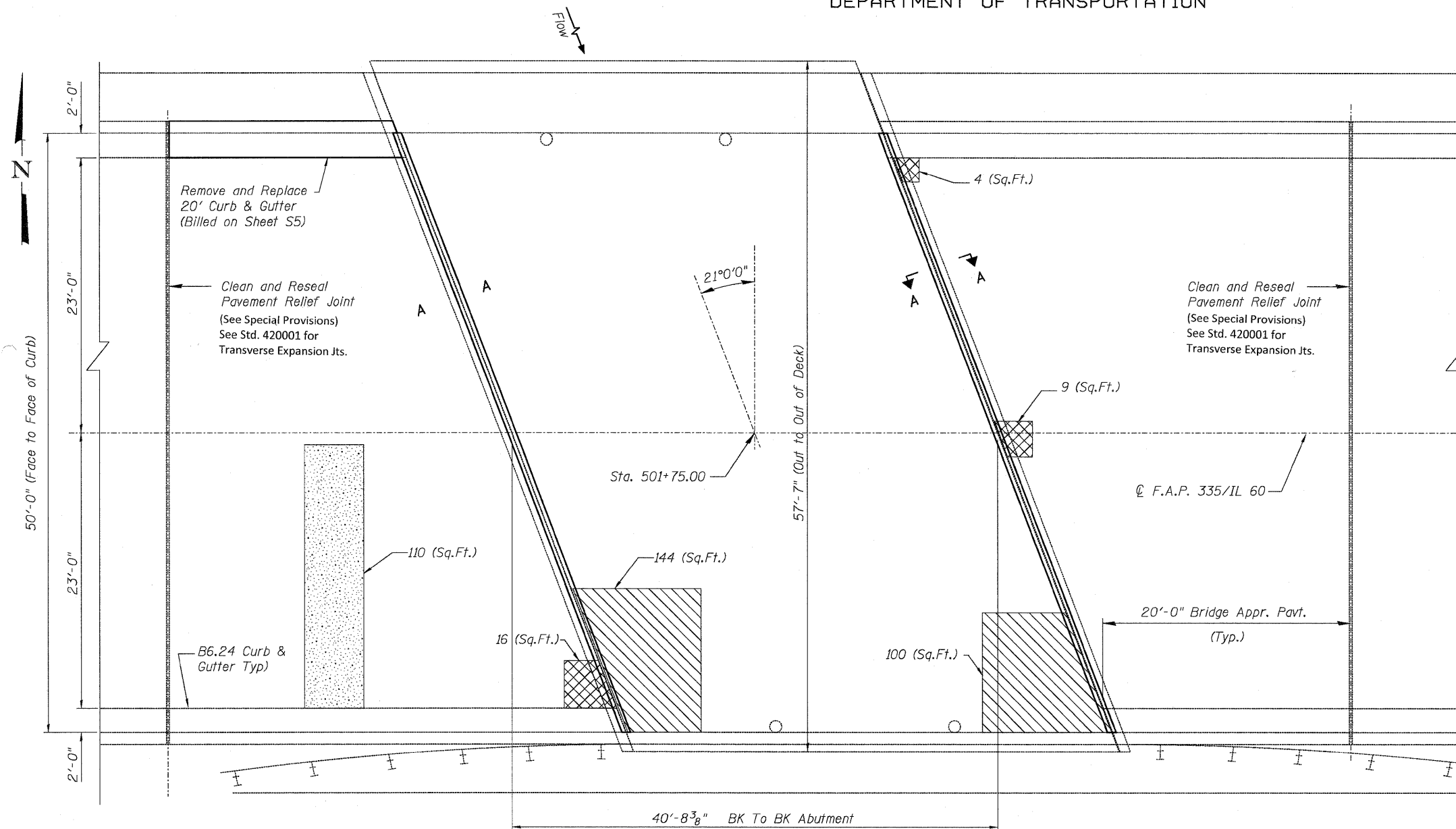
R-27

11-1-09

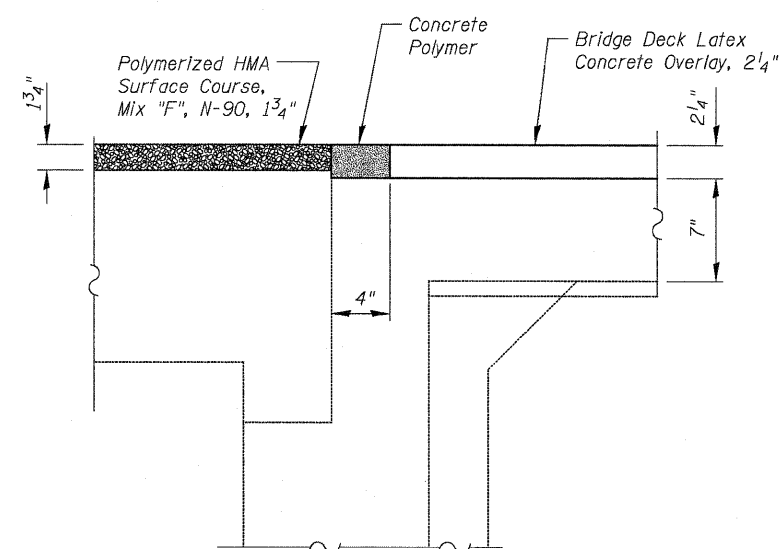
**TEMPORARY CONCRETE BARRIER
STRUCTURE NO. 049-0037**

SHEET NO. S3	F.A.P RTE.	SECTION	COUNTY	TOTAL SHEETS	SHEET NO.
	335	120 R-I-1	LAKE	18	10
S6 SHEETS	CONTRACT NO. 60J54				
ILLINOIS FED. AID PROJECT					

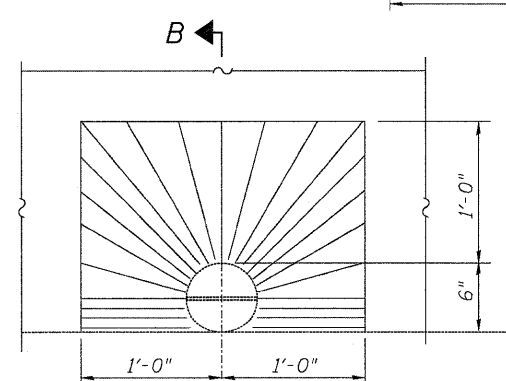
STATE OF ILLINOIS
DEPARTMENT OF TRANSPORTATION



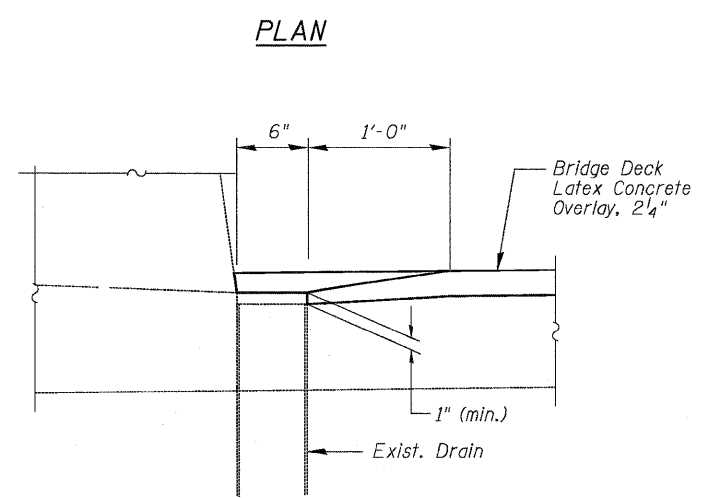
SECTION A-A
EXISTING



SECTION A-A
PROPOSED



DRAIN PLAN



SECTION B-B

PLAN

Note:
Repair of the existing deck slab and approaches shall include but may not be limited to the areas shown. The actual areas to be repaired will be determined by the Engineer at the time of construction.

- LEGEND:**
- Deck Slab Repair (Partial Depth) For Information Only
 - Approach Slab Repair (Partial Depth)
 - Approach Slab Repair (Full Depth)

BILL OF MATERIAL

ITEM	UNIT	QUANTITY
Approach Slab Repair (Full Depth)	Sq. Yd.	13
Approach Slab Repair (Partial Depth)	Sq. Yd.	4
Concrete Polymer	Cu. Ft.	7
Clean and Reseal Relief Joint	Foot	92

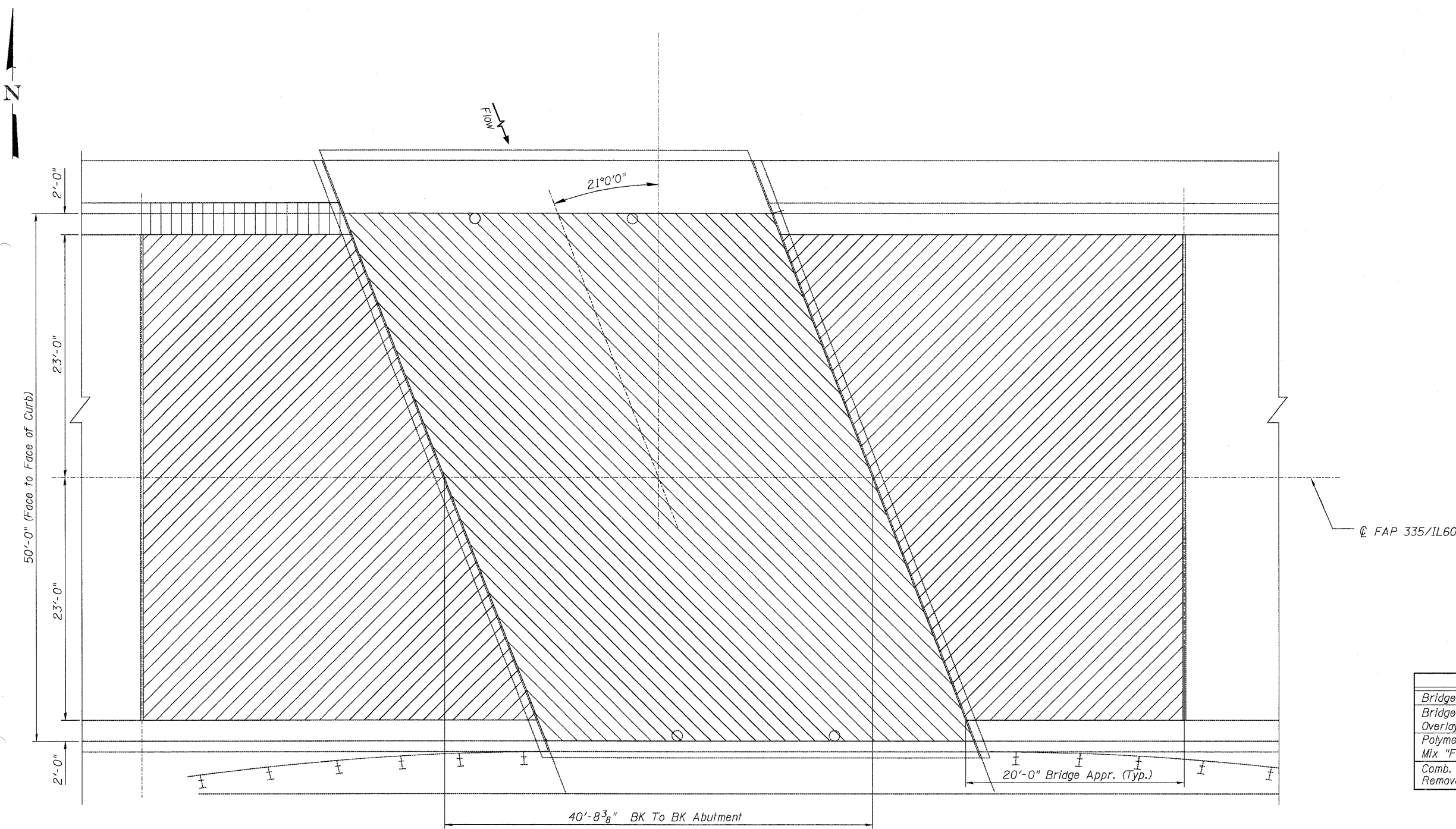
BRIDGE DECK & APPROACH PATCHING PLAN AND TRANSVERSE JOINT RECONSTRUCTION DETAILS
STRUCTURE NO. 049-0037

DESIGNED JPM
CHECKED TG
DRAWN MPS
CHECKED JPM, TG



SHEET NO. S4 S6 SHEETS	F.A.P. RTE. 335	SECTION 120 R-I-1	COUNTY LAKE	TOTAL SHEETS 18	SHEET NO. 11
	CONTRACT NO. 60J54 ILLINOIS FED. AID PROJECT				

STATE OF ILLINOIS
DEPARTMENT OF TRANSPORTATION

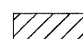
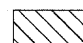



☐ FAP 335/IL60

BILL OF MATERIAL

ITEM	UNIT	QUANTITY
Bridge Deck Hydroscarification, 1/2"	Sq. Yd.	227
Bridge Deck Latex Concrete Overlay, 2 1/4"	Sq. Yd.	227
Polymerized HMA Surface Course, Mix "F", N-90, 1 3/4"	Tons	66
Comb. Curb & Gutter Removal & Replacement	Foot	20

LEGEND:

-  Polymerized HMA Surface Course, Mix "F", N-90, 1 3/4"
-  Bridge Deck Hydroscarification, 1/2"
Bridge Deck Latex Concrete Overlay, 2 1/4"
-  Curb & Gutter Removal & Replacement

PLAN

**BRIDGE DECK & APPROACH
IMPROVEMENT PLAN
STRUCTURE NO. 049-0037**

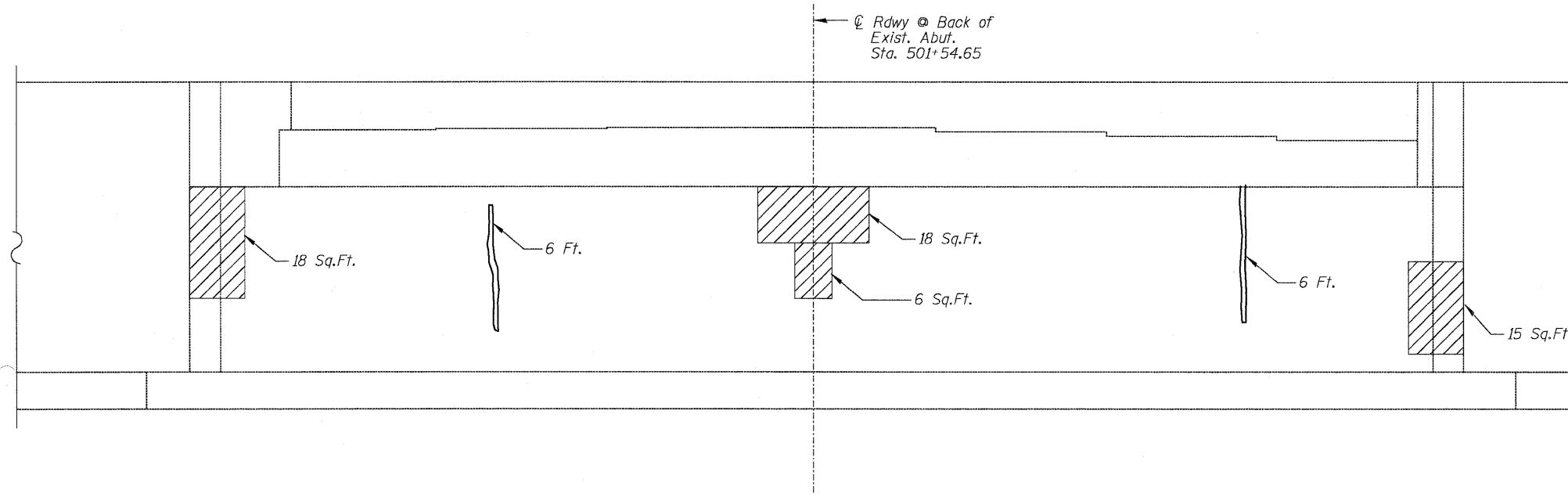
DESIGNED	JPM
CHECKED	TG
DRAWN	MPS
CHECKED	JPM, TG



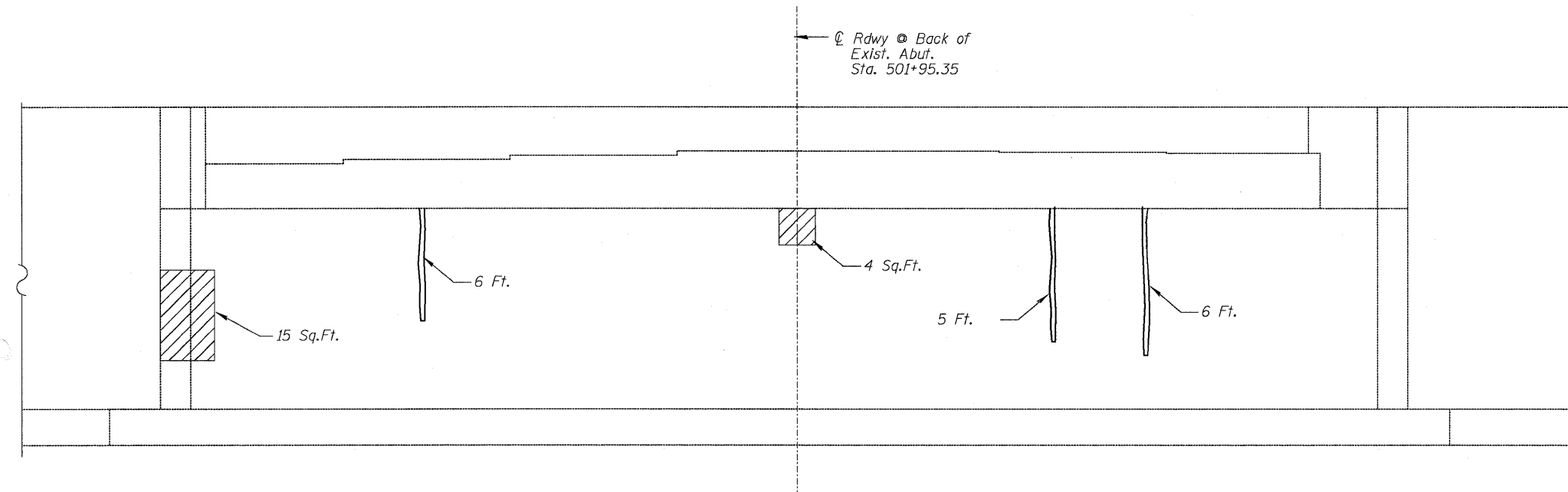
180 S. WACKER DRIVE SUITE 700, CHICAGO IL 60606, P:312-686-8788 F:312-686-8415

SHEET NO. S5 S6 SHEETS	F.A.P RTE.	SECTION	COUNTY	TOTAL SHEETS	SHEET NO.
	335	120 R-I-1	LAKE	18	12
			CONTRACT NO. 60J54		
ILLINOIS FED. AID PROJECT					

STATE OF ILLINOIS
DEPARTMENT OF TRANSPORTATION



WEST ABUTMENT



EAST ABUTMENT

LEGEND:

- Structural Repair of Concrete
(Depth equal to or less than 5 inches)
- Epoxy Crack Injection

BILL OF MATERIAL

ITEM	UNIT	QUANTITY
Structural Repair of Concrete (Depth equal to or less than 5 inches)	Sq. Ft.	76
Epoxy Crack Injection	Foot	29

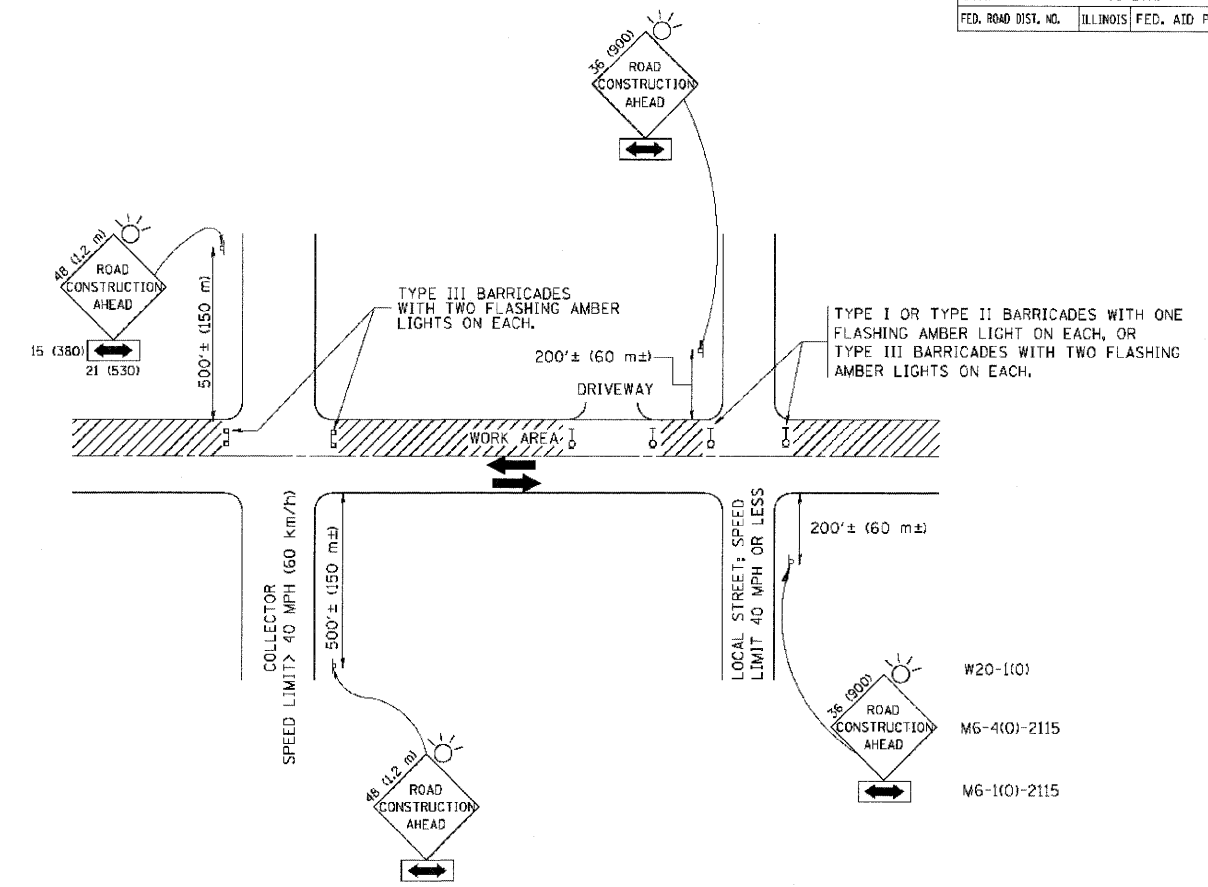
ABUTMENT REPAIRS
STRUCTURE NO. 049-0037

DESIGNED JPM
CHECKED TG
DRAWN MPS
CHECKED JPM, TG



SHEET NO. S6	F.A.P RTE.	SECTION	COUNTY	TOTAL SHEETS	SHEET NO.
	335	120 R-I-1	LAKE	18	13
S6 SHEETS			CONTRACT NO. 60J54		
ILLINOIS FED. AID PROJECT					

F.A.P. RTE.	SECTION	COUNTY	TOTAL SHEETS	SHEET NO.
335	120 R-1-1	LAKE	18	14
STA. TO STA.		CONTRACT NO. 60J54		
FED. ROAD DIST. NO.		ILLINOIS FED. AID PROJECT		



TRAFFIC CONTROL AND PROTECTION FOR SIDE ROADS, INTERSECTIONS, AND DRIVEWAYS

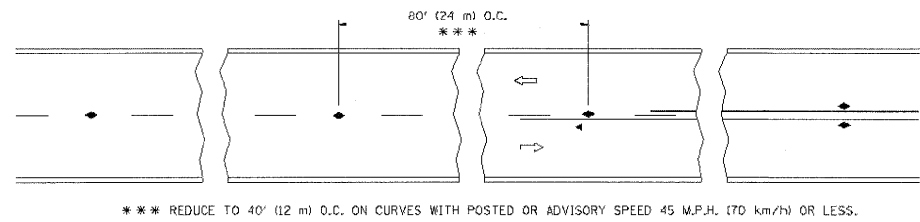
NOTES:

- A. FOR NO LANE RESTRICTION ON THE SIDE ROAD OR DRIVEWAYS**
- SIDE ROAD WITH A SPEED LIMIT OF 40 MPH (60 km/h) OR LESS AS SHOWN ON THE DRAWING AND AS DIRECTED BY THE ENGINEER:
 - ONE **ROAD CONSTRUCTION AHEAD** SIGN 36 x 36 (900x900) WITH A FLASHER AND FLAG MOUNTED ON IT APPROXIMATELY 200' (60 m) IN ADVANCE OF THE MAIN ROUTE.
 - THE CLOSED PORTION OF THE MAIN ROUTE SHALL BE PROTECTED BY BLOCKING WITH TYPE I, TYPE II OR TYPE III BARRICADES, 1/3 OF THE CROSS SECTION OF THE CLOSED PORTION.
 - SIDE ROAD WITH A SPEED LIMIT GREATER THAN 40 MPH (60 km/h) AS SHOWN ON THE DRAWING AND AS DIRECTED BY THE ENGINEER:
 - ONE **ROAD CONSTRUCTION AHEAD** SIGN 48 x 48 (1.2 m x 1.2 m) WITH A FLASHER MOUNTED ON IT APPROXIMATELY 500' (150 m) IN ADVANCE OF THE MAIN ROUTE.
 - THE CLOSED PORTION OF THE MAIN ROUTE SHALL BE PROTECTED BY BLOCKING WITH TYPE III BARRICADES, 1/2 OF THE CROSS SECTION OF THE CLOSED PORTION.
 - WHEN THE SIDE ROAD LIES BETWEEN THE BEGINNING OF THE MAINLINE SIGNING AND THE WORK ZONE, A SINGLE HEADED ARROW (M6-1) SHALL BE USED IN LIEU OF THE DOUBLE HEADED ARROW (M6-4).
- B. FOR A LANE CLOSURE ON A SIDE ROAD OR DRIVEWAY:**
- USE APPLICABLE PORTIONS OF THE TYPICAL APPLICATION OF TRAFFIC CONTROL DEVICES (STD. 701501, STD. 701606 OR THE APPROPRIATE STANDARD). THE SPACING OF SIGNS AND BARRICADES SHALL BE ADJUSTED FOR FIELD CONDITIONS AS DIRECTED BY THE ENGINEER. THE DIRECTIONAL ARROW SHALL BE COVERED OR REMOVED WHEN NO LONGER CONSISTENT WITH THE SIDE ROAD LANE CLOSURE.
- C. ADVANCE WARNING SIGNS ARE TO BE OMITTED ON DRIVEWAY UNLESS OTHERWISE NOTED.**
- D. THE TRAFFIC CONTROL AND PROTECTION FOR SIDE ROADS, INTERSECTIONS, AND DRIVEWAYS SHALL BE INCIDENTAL TO THE COST OF SPECIFIED TRAFFIC CONTROL STANDARDS OR ITEMS.**

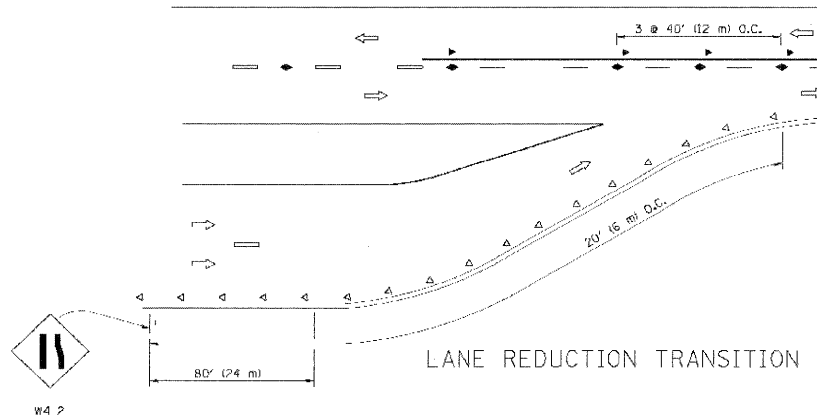
All dimensions are in millimeters (inches) unless otherwise shown.

REVISIONS		ILLINOIS DEPARTMENT OF TRANSPORTATION TRAFFIC CONTROL AND PROTECTION FOR SIDE ROADS, INTERSECTIONS, AND DRIVEWAYS
NAME	DATE	
LHA	6/89	SCALE: NONE DRAWN BY CHECKED BY TC-10
T. RAMMACHER	09/08/94	
J. OBERLE	10/18/95	
A. HOUSEH	03/06/96	
T. RAMMACHER	01/06/00	

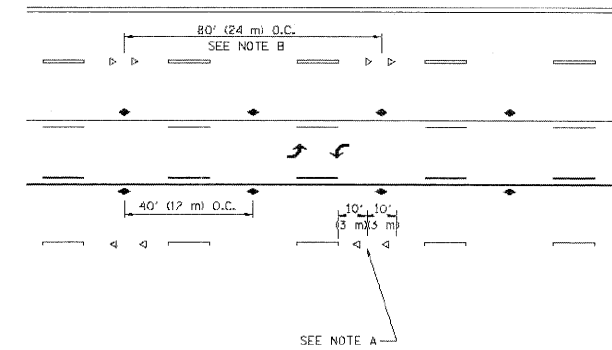
USER NAME = bawend



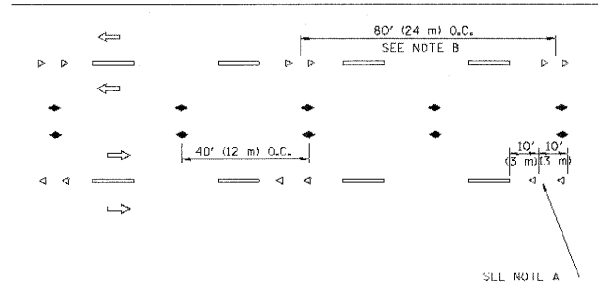
TWO-LANE/TWO-WAY



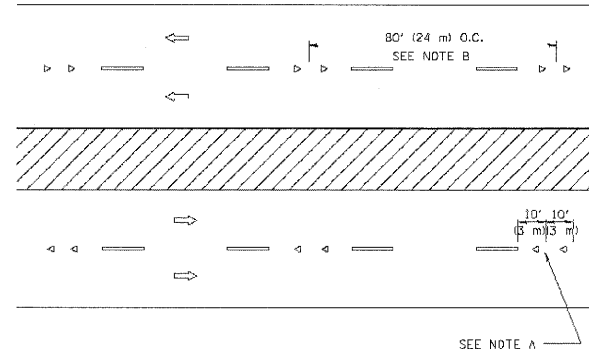
LANE REDUCTION TRANSITION



TWO-WAY LEFT TURN



MULTI-LANE/UNDIVIDED



MULTI-LANE/DIVIDED

GENERAL NOTES

1. MARKERS USED WITH DASHED LINES SHALL BE CENTERED IN THE GAP BETWEEN SEGMENTS.
2. MARKERS USED ADJACENT TO SOLID LINES SHALL BE OFFSET 2 TO 3 (50 TO 75) TOWARD TRAFFIC AS SHOWN.
3. MARKERS THROUGH TANGENTS LESS THAN 500' (150 m) IN LENGTH BETWEEN CURVES SHALL BE INSTALLED AT THE LESSER OF THE TWO CURVE SPACINGS.

SYMBOLS

- YELLOW STRIPE
- ▬ WHITE STRIP
- ◀ ONE-WAY AMBER MARKER
- ◁ ONE-WAY CRYSTAL MARKER (W/O)
- ◆ TWO-WAY AMBER MARKER

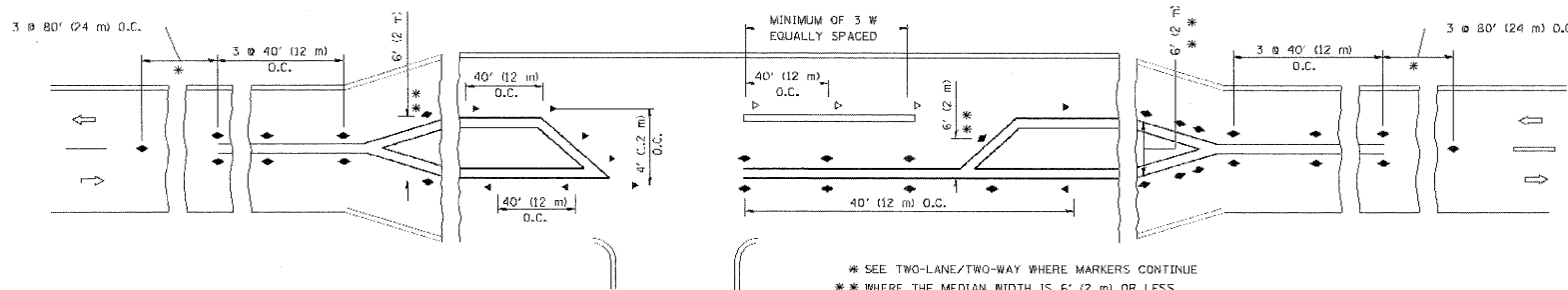
LANE MARKER NOTES

- A. USE DOUBLE LANE LINE MARKERS SPACED AS SHOWN.
- B. REDUCE TO 40' (12 m) O.C. ON CURVES WHERE ADVISORY SPEEDS ARE 10 M.P.H. (20 km/h) LOWER THAN POSTED SPEEDS.

DESIGN NOTES

1. DOUBLE LANE LINE MARKERS SHALL BE USED UNLESS SPECIFIED OTHERWISE.
2. EXCEPT AS SHOWN ON THE LANE REDUCTION TRANSITION AND RAMPWAY EXIT RAMP DETAIL, MARKERS ARE NOT TO BE SPECIFIED ON RIGHT EDGE LINES.
3. THE EXACT MARKER LIMITS, SPACING, AND COLOR SHOULD BE INCLUDED IN THE PLANS.
4. MARKERS SHOULD NOT BE USED ALONGSIDE CURBS EXCEPT FOR EXTREMELY SHORT SECTIONS OF CURBS WHERE NOT MORE THAN TWO MARKERS WOULD BE INVOLVED.

All dimensions are in inches (millimeters) unless otherwise shown.



LEFT TURN

REVISIONS NAME	DATE
T. RAMMACHER	09-19-94
T. RAMMACHER	03-12-99
T. RAMMACHER	03-06-00
C. JUCCUS	09-09-09

ILLINOIS DEPARTMENT OF TRANSPORTATION
TYPICAL APPLICATIONS
RAISED REFLECTIVE PAVEMENT
MARKERS (SNOW-PLOW RESISTANT)

SCALE: NONE

DRAWN BY CAUD
CHECKED BY
TC-11

FILE NAME =
#FILE#



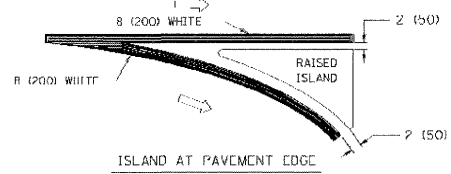
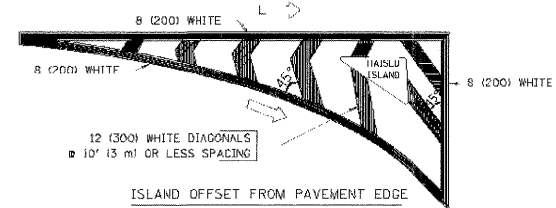
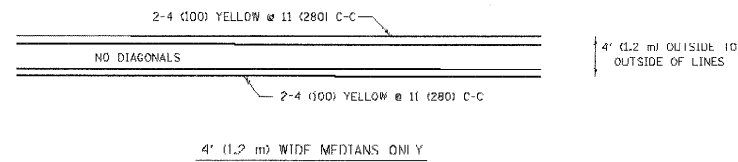
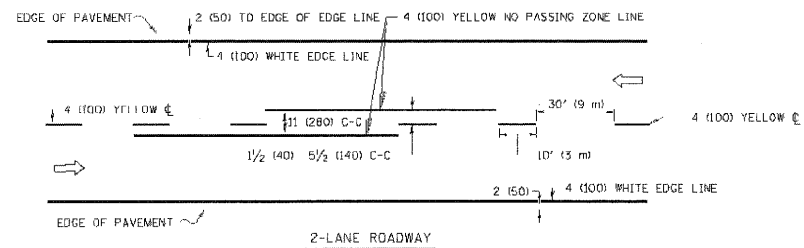
DESIGNED	VEA	REVISED	-
DRAWN	VEA	REVISED	-
CHECKED	TWL	REVISED	-
DATE	1/29/2010	REVISED	-

STATE OF ILLINOIS
DEPARTMENT OF TRANSPORTATION

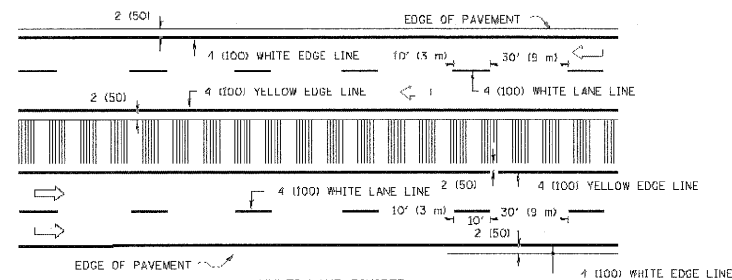
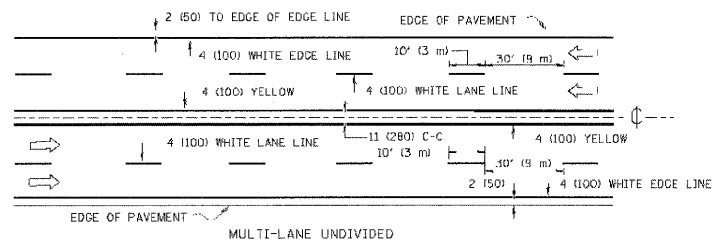
DISTRICT ONE STANDARD DETAILS
TC-11

SCALE: SHEET NO. OF SHEETS STA. TO STA.

F.A.P. RTE.	SECTION	COUNTY	TOTAL SHEETS	SHEET NO.
335	120 R-1-1	LAKE	18	15
CONTRACT NO. 60J54				
ILLINOIS FED. AID PROJECT				

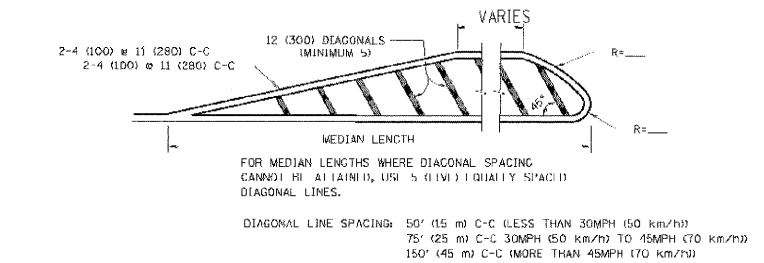
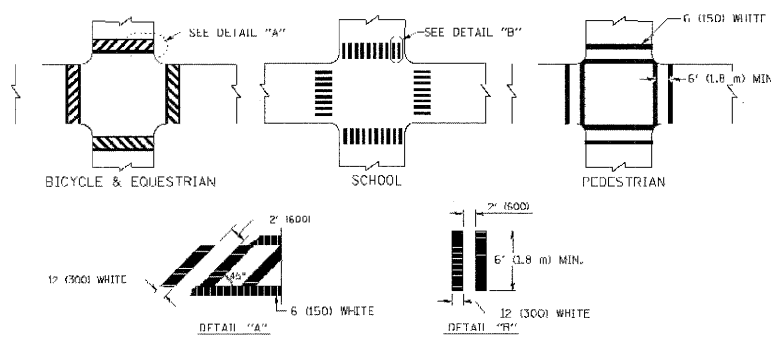


TYPICAL ISLAND MARKING

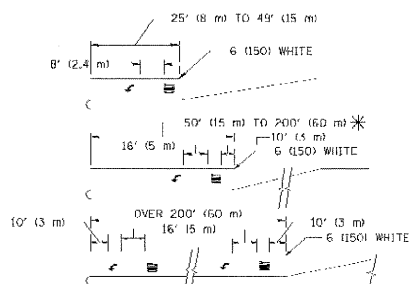
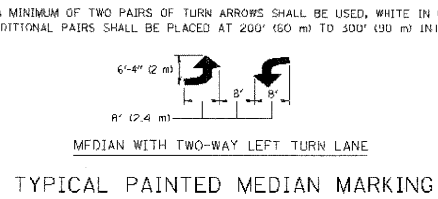
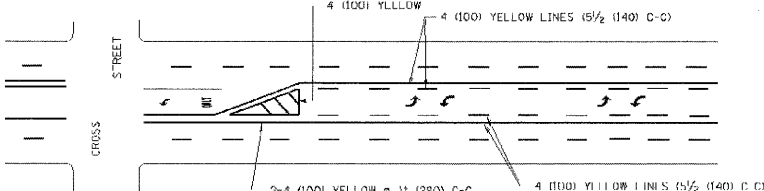


NOTE: MEDIANS WITH BARRIER CURB DO NOT REQUIRE AN EDGE LINE

TYPICAL LANE AND EDGE LINE MARKING



MEDIANS OVER 4' (1.2 m) WIDE



FULL SIZE LETTERS 8' (2.4 m) AND ARROWS SHALL BE USED.
 * AREA = 15.6 SQ. FT. (1.5 m²) ONLY AREA = 20.8 SQ. FT. (1.9 m²)
 * TURN LANES IN EXCESS OF 400' (120 m) IN LENGTH MAY HAVE AN ADDITIONAL SET OF ARROW - "ONLY" INSTALLED MIDWAY BETWEEN THE OTHER TWO SETS OF ARROW - "ONLY"

TYPICAL LEFT (OR RIGHT) TURN LANE

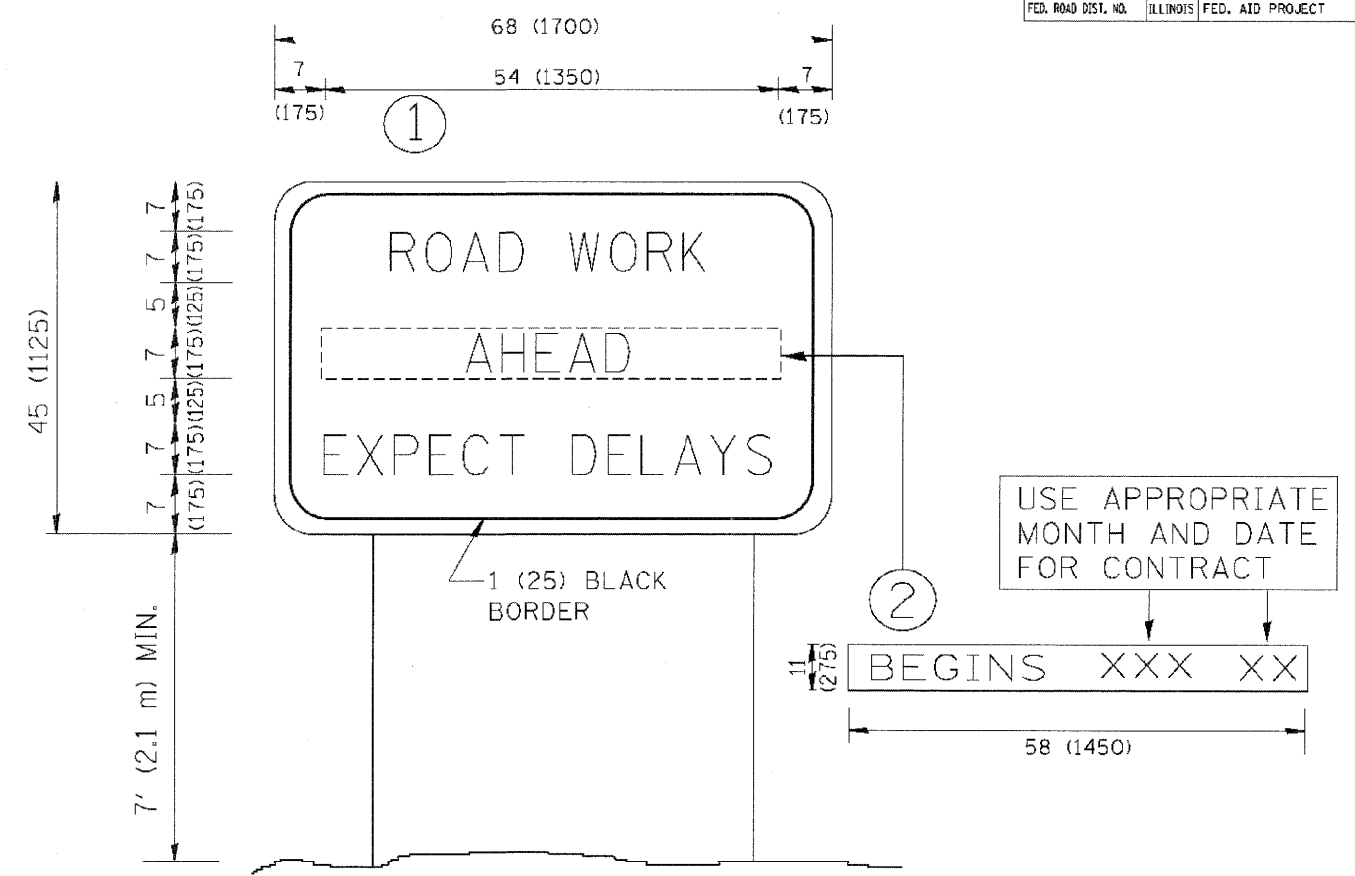
TYPICAL TURN LANE MARKING

TYPE OF MARKING	WIDTH OF LINE	PATTERN	COLOR	SPACING / REMARKS
CENTERLINE ON 2 LANE PAVEMENT	4 (100)	SKIP-DASH	YELLOW	10' (3 m) LINE WITH 30' (9 m) SPACE
CENTERLINE ON MULTI-LANE UNDIVIDED PAVEMENT	2 @ 4 (100)	SOLID	YELLOW	11 (280) C-C
NO PASSING ZONE LINES FOR ONE DIRECTION FOR BOTH DIRECTIONS	4 (100) 2 @ 4 (100)	SOLID SOLID	YELLOW YELLOW	5 1/2 (140) C-C FROM SKIP-DASH CENTERLINE 11 (280) C-C OMIT SKIP-DASH CENTERLINE BETWEEN
LANE LINES	4 (100) 5 (125) ON FREEWAYS	SKIP-DASH SKIP-DASH	WHITE WHITE	10' (3 m) LINE WITH 30' (9 m) SPACE
DOTTED LINES (EXTENSIONS OF CENTER, LANE OR TURN LANE MARKINGS)	SAME AS LINE BEING EXTENDED	SKIP-DASH	SAME AS LINE BEING EXTENDED	2' (600) LINE WITH 6' (1.8 m) SPACE
EDGE LINES	4 (100)	SOLID	YELLOW-LEFT WHITE-RIGHT	OUTLINE MOUNTABLE MEDIANS IN YELLOW; EDGE LINES ARE NOT USED NEXT TO BARRIER CURB
TURN LANE MARKINGS	6 (150) LINE; FULL SIZE LETTERS & SYMBOLS (8' (2.4 m))	SOLID	WHITE	SEE TYPICAL TURN LANE MARKING DETAIL
TWO WAY LEFT TURN MARKING	2 @ 4 (100) EACH DIRECTION 8' (2.4 m) LEFT ARROW	SKIP-DASH AND SOLID IN PAIRS	YELLOW WHITE	10' (3 m) LINE WITH 30' (9 m) SPACE FOR SKIP-DASH; 5 1/2 (140) C-C BETWEEN SOLID LINE AND SKIP-DASH LINE SEE TYPICAL TWO-WAY LEFT TURN MARKING DETAIL
CROSSWALK LINES (PEDESTRIAN A. DIAGONALS (BIKE & EQUESTRIAN) B. LONGITUDINAL BARS (SCHOOL))	2 @ 6 (150) 12 (300) @ 45° 12 (300) @ 90°	SOLID SOLID SOLID	WHITE WHITE WHITE	NOT LESS THAN 6' (1.8 m) APART 2' (600) APART SEE TYPICAL CROSSWALK MARKING DETAILS.
STOP LINES	2 @ (600)	SOLID	WHITE	PLACE 4' (1.2 m) IN ADVANCE OF AND PARALLEL TO CROSSWALK, IF PRESENT; OTHERWISE, PLACE AT DESIRED STOPPING POINT, PARALLEL TO CROSSROAD CENTERLINE, WHERE POSSIBLE
PAINTED MEDIANS	2 @ 4 (100) WITH 12 (300) DIAGONALS @ 45° NO DIAGONALS USED FOR 4' (1.2 m) WIDE MEDIANS	SOLID	YELLOW; TWO WAY TRAFFIC WHITE; ONE WAY TRAFFIC	11 (280) C-C FOR THE DOUBLE LINE SEE TYPICAL PAINTED MEDIAN MARKING.
GORE MARKING AND CHANNELIZING LINES	8 (200) WITH 12 (300) DIAGONALS @ 45°	SOLID	WHITE	DIAGONALS: 15' (4.5 m) C-C (LESS THAN 30MPH (50 km/h)) 20' (6 m) C-C 30MPH (50 km/h) TO 45MPH (70 km/h) 30' (9 m) C-C OVER 45MPH (70 km/h)
RAILROAD CROSSING	24 (600) TRANSVERSE LINES; "RR" 15' (4.5 m) LETTERS (8 (200) LINE FOR "X")	SOLID	WHITE	SEE STATE STANDARD 780001 AREA OF: "X" = 3.6 SQ. FT. (0.33 m ²) EACH "X" = 54.0 SQ. FT. (5.0 m ²)
SHOULDER DIAGONALS	12 (300) @ 45°	SOLID	WHITE - RIGHT YELLOW - LEFT	50' (15 m) C-C (LESS THAN 30MPH (50 km/h)) 75' (25 m) C-C (30 MPH (50 km/h) TO 45MPH (70 km/h)) 150' (45 m) C-C (OVER 45MPH (70 km/h))

FOR FURTHER DETAILS ON PAVEMENT MARKING REFER TO STANDARD SPECIFICATIONS FOR ROAD AND BRIDGE CONSTRUCTION AND STATE STANDARD 780001.

All dimensions are in inches (millimeters) unless otherwise shown.

REVISIONS		ILLINOIS DEPARTMENT OF TRANSPORTATION	
NAME	DATE	DISTRICT ONE TYPICAL PAVEMENT MARKINGS	
EYERS	03-19-90		
L. HAMMACHER	10-27-94		
C. JUCIUS	09-09-09	SCALE: NONE	
		DRAWN BY CADD	
		CHECKED BY	
		TC-13	



NOTES:

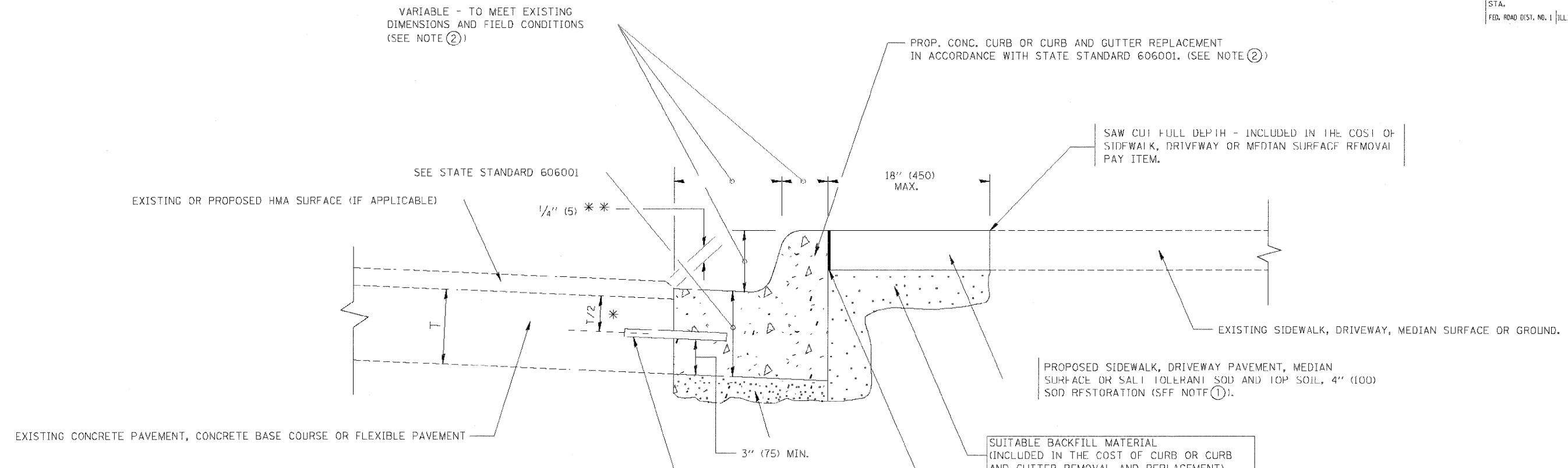
1. USE BLACK LETTERING ON ORANGE BACKGROUND.
2. ERECT SIGNS IN ADVANCE OF THE LOCATION FOR THE "ROAD CONSTRUCTION AHEAD" SIGN AT LOCATIONS AS DIRECTED BY THE ENGINEER.
3. ERECT SIGN ① WITH INSTALLED PANEL ② ONE WEEK PRIOR TO THE START OF CONSTRUCTION.
4. REMOVE PANEL ② SOON AFTER THE START OF CONSTRUCTION.
5. SEE SPECIAL PROVISION FOR "TEMPORARY INFORMATION SIGNING" FOR ADDITIONAL INFORMATION.
6. ONE SIGN ASSEMBLY EQUALS 25.70 SQ. FT. (2.3 SQ. M.)
7. SHALL BE PAID FOR AS TEMPORARY INFORMATION SIGNING.

ALL DIMENSIONS ARE IN INCHES (MILLIMETERS) UNLESS OTHERWISE SHOWN.

REVISIONS		ILLINOIS DEPARTMENT OF TRANSPORTATION	
NAME	DATE		
R. WIRS	9-15-97	ARTERIAL ROAD INFORMATION SIGN	
R. WIRS	12-11-97		
T. RAMMACHER	2-2-99		
C. JUCIUS	1-31-07		

SCALE: NONE DRAWN BY DESIGN
CHECKED BY
TC22

CONTRACT NO.				
F.A. RTE.	SECTION	COUNTY	TOTAL SHEETS	SHEET NO.
STA.	TO STA.			
FED. ROAD DIST. NO. 1 ILLINOIS FED. AID PROJECT				



- * 3" (75) MINIMUM FROM TOP AND BOTTOM OF THE CONCRETE PAVEMENT OR BASE COURSE.
- * * IF THE FINAL SURFACE OF THE PAVEMENT IS CONCRETE, THE GUTTER IS TO BE FLUSH WITH THE PAVEMENT.
- NOTE: ① SIDEWALK, DRIVEWAY PAVEMENT OR MEDIAN SURFACE SHALL BE SIMILAR TO THE MATERIAL BEING REMOVED AND WILL BE PAID FOR SEPARATELY.
SODDING, SALT TOLERANT AND TOP SOIL, FURNISH AND PLACE 4" WILL BE PAID FOR SEPARATELY.
- ② FERTILIZER FOR THE PLACEMENT OF THE SOD IS NOT REQUIRED
- ③ CURB OR CURB AND GUTTER REPLACEMENT SHALL MATCH THE SHAPE OF THE EXISTING CURB OR CURB AND GUTTER UNLESS OTHERWISE SPECIFIED.
- ④ FOR CURB OR CURB AND GUTTER REMOVAL AND REPLACEMENT ADJACENT TO FLEXIBLE PAVEMENT DELETE EPOXY COATED TIE BARS.
- ⑤ LONGITUDINAL BARS, IF ENCOUNTERED IN THE EXISTING CURB OR CURB AND GUTTER, ARE NOT TO BE REPLACED. CUTTING AND REMOVING LONGITUDINAL BARS SHALL BE INCLUDED IN THE COST OF CURB OR CURB AND GUTTER REMOVAL AND REPLACEMENT.
- ⑥ THE COST OF HMA SURFACE REMOVAL IN THE EXISTING GUTTER FLAG SHALL BE INCLUDED IN THE COST OF THE CURB AND GUTTER REMOVAL AND REPLACEMENT.
- ⑦ THE REMOVAL AND REPLACEMENT OF THE EXISTING CURB OR CURB AND GUTTER SHALL BE DONE IN ACCORDANCE WITH THE APPLICABLE PORTIONS OF SECTION 440 AND 606 OF THE STANDARD SPECIFICATIONS.
- ⑧ THE LOCATIONS OF REMOVAL AND REPLACEMENT OF EXISTING CURB OR CURB AND GUTTER SHALL BE DETERMINED BY THE RESIDENT ENGINEER AT THE TIME OF CONSTRUCTION.

SUITABLE BACKFILL MATERIAL (INCLUDED IN THE COST OF CURB OR CURB AND GUTTER REMOVAL AND REPLACEMENT)

PROPOSED 3/4" (20) PREFORMED EXPANSION JOINT AT CONCRETE SIDEWALKS, DRIVEWAYS, AND MEDIANS. (INCLUDED IN THE COST OF CURB OR CURB AND GUTTER REMOVAL AND REPLACEMENT.)

UNSUITABLE SUB-BASE MATERIAL TO BE REMOVED, IF DIRECTED BY THE ENGINEER, SHALL BE REPLACED WITH EITHER SUB-BASE GRANULAR MATERIAL, TYPE B OR ADDITIONAL THICKNESS OF CONCRETE.

REMOVAL AND REPLACEMENT 4" (100) OR LESS IS INCLUDED IN THE COST OF CURB OR CURB AND GUTTER REMOVAL AND REPLACEMENT.

REMOVAL AND REPLACEMENT IN EXCESS OF 4" (100) WILL BE PAID FOR IN ACCORDANCE WITH ARTICLE 109.04 OF THE STANDARD SPECIFICATIONS.

PROPOSED #6 (20) EPOXY COATED TIE BARS 24" (600) LONG AT 24" (600) CENTERS WILL NOT BE PAID FOR SEPARATELY. DELETE EPOXY COATED TIE BARS IF EXISTING TIE BARS ARE USUABLE AS DETERMINED BY THE ENGINEER. (SEE NOTE ③).

BASIS OF PAYMENT:
THIS WORK WILL BE PAID FOR AT THE CONTRACT UNIT PRICE PER FOOT (METER) FOR "CURB REMOVAL AND REPLACEMENT" OR "COMBINATION CONCRETE CURB AND GUTTER REMOVAL AND REPLACEMENT".

ALL DIMENSIONS ARE IN INCHES (MILLIMETERS) UNLESS OTHERWISE SHOWN.

REVISIONS	
NAME	DATE
A. HOUSEH	03/11/94
R. SHAH	02/24/95
R. SHAH	03/02/95
R. SHAH	08/19/96
H. SHAH	09/12/96
R. SHAH	09/19/96
H. SHAH	10/03/96
A. ABBAS	03/21/97
M. GOMEZ	01/22/01
R. BORO	12/15/09

ILLINOIS DEPARTMENT OF TRANSPORTATION

CURB OR CURB AND GUTTER REMOVAL AND REPLACEMENT

SCALE: VERT. NONE
HORIZ. _____

DRAWN BY _____
CHECKED BY _____

BD600-06 (BD-24)

CURB OR CURB AND GUTTER REMOVAL AND REPLACEMENT

FILE NAME =
\$FILEL\$



DESIGNED	VEA	REVISED	-
DRAWN	VEA	REVISED	-
CHECKED	TWL	REVISED	-
DATE	1/29/2010	REVISED	-

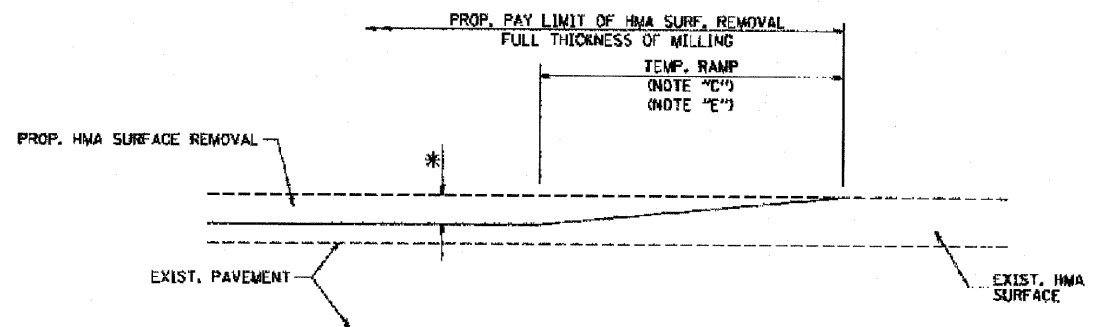
STATE OF ILLINOIS
DEPARTMENT OF TRANSPORTATION

DISTRICT ONE STANDARD DETAILS
BD-24

SCALE: SHEET NO. OF SHEETS STA. TO STA.

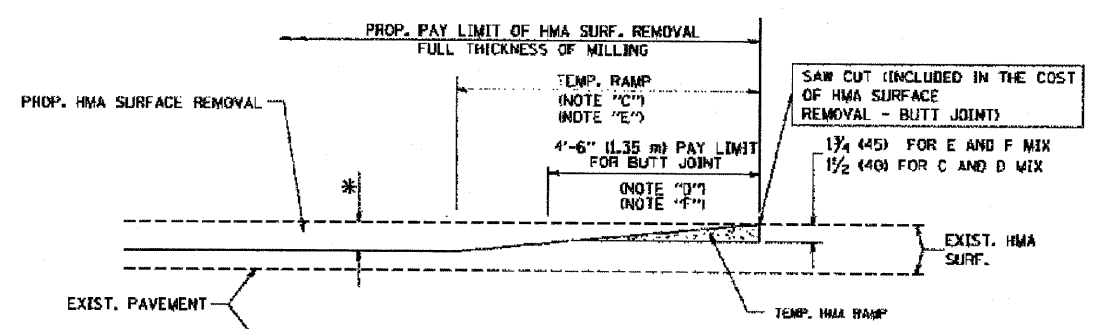
F.A.P. RTE.	SECTION	COUNTY	TOTAL SHEETS	SHEET NO.
335	120 R-1-1	LAKE	18	18
CONTRACT NO. 60J54				
ILLINOIS FED. AID PROJECT				

F.A. RTE.	SECTION	COUNTY	TOTAL SHEETS	SHEET NO.
STA.	TO STA.			
FED. ROAD DIST. NO. 1	ILLINOIS	FED. AID PROJECT		



MILLED TEMPORARY RAMP
(FOR BUTT JOINT AND HMA TAPER SEE DETAIL BELOW)

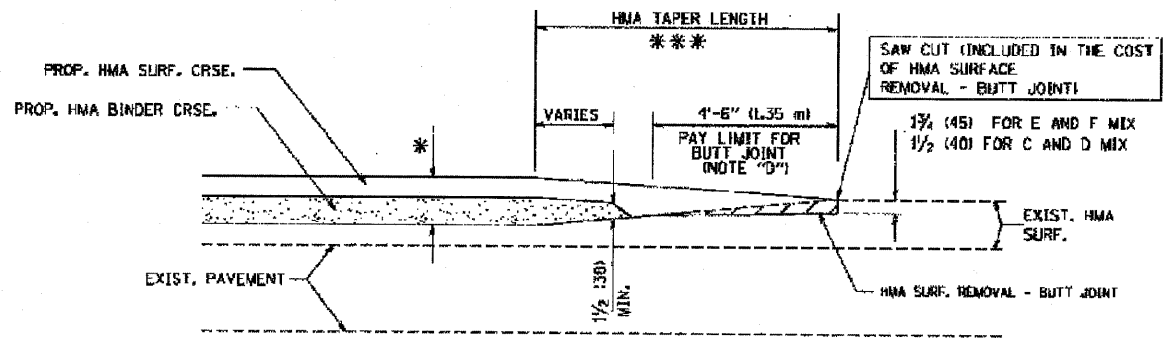
OPTION 1



HMA CONSTRUCTED TEMPORARY RAMP
(FOR BUTT JOINT AND HMA TAPER SEE DETAIL BELOW)

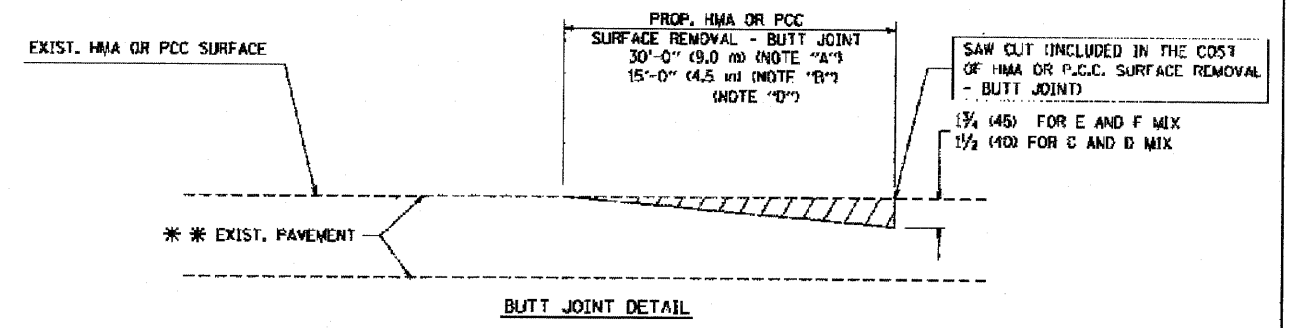
OPTION 2

TYPICAL TEMPORARY RAMP

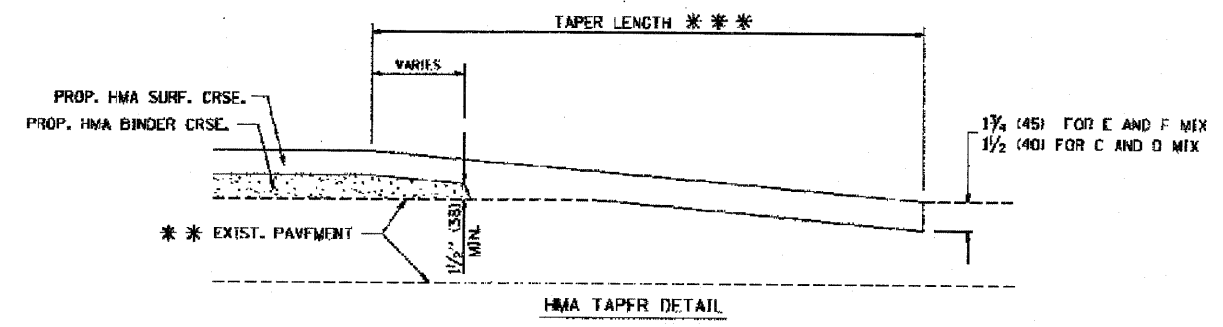


BUTT JOINT AND HMA TAPER

TYPICAL BUTT JOINT AND HMA TAPER FOR MILLING AND RESURFACING



BUTT JOINT DETAIL



HMA TAPER DETAIL

TYPICAL BUTT JOINT AND HMA TAPER FOR RESURFACING ONLY

*** PC CONCRETE, HMA OR HMA RESURFACED PAVEMENT.

NOTES

- A: MAINLINE ROADWAYS AND MAJOR SIDE ROADS.
- B: MINOR SIDE ROADS.
- C: THE TEMP. RAMP SHALL BE CONSTRUCTED IMMEDIATELY UPON REMOVAL OF THE EXISTING HMA SURFACE.
- D: THE BUTT JOINT SHALL BE CONSTRUCTED IMMEDIATELY PRIOR TO PLACING THE PROPOSED HMA COURSES.
- E: TAPER THE TEMP. RAMP AT A RATE OF 3'-0" (900 mm) PER 1 INCH (25 mm) OF MILLING THICKNESS.
- F: INSTALLATION AND REMOVAL OF THE 4'-6" (1.35 m) TEMP. RAMP IS INCLUDED IN COST OF HMA SURFACE REMOVAL - BUTT JOINT
- G: SEE ARTICLE 406.08 AND 406.14 OF THE STANDARD SPECIFICATIONS FOR "HMA AND/OR PCC SURFACE REMOVAL - BUTT JOINT".
- * SEE TYPICAL SECTIONS FOR MILLING THICKNESS.
- *** 20'-0" (6.1 m) PER 1 (25) RESURFACING (NOTE "A")
10'-0" (3.0 m) PER 1 (25) RESURFACING (NOTE "B")

ALL DIMENSIONS ARE IN INCHES (MILLIMETERS) UNLESS OTHERWISE SHOWN.

BASIS OF PAYMENT:

THE BUTT JOINT WILL BE PAID FOR AT THE CONTRACT UNIT PRICE PER SQUARE YARD (SQUARE METER) FOR "HOT-MIX ASPHALT SURFACE REMOVAL - BUTT JOINT" OR FOR "PORTLAND CEMENT CONCRETE SURFACE REMOVAL - BUTT JOINT".

REVISIONS	
NAME	DATE
M. DE YONG	6-13-90
M. DE YONG	7-3-90
M. DE YONG	1-27-97
R. SHAR	09/09/94
R. SHAR	10/25/94
A. ABBAS	03/21/97
M. GOMEZ	04/06/08
R. BORG	01/01/07

ILLINOIS DEPARTMENT OF TRANSPORTATION

BUTT JOINT AND HMA TAPER DETAILS

SCALE: VERT. NONE
HORIZ. NONE
DRAWN BY
CHECKED BY

FILE NAME =
FILE



DESIGNED	VEA	REVISED	-
DRAWN	VEA	REVISED	-
CHECKED	TWL	REVISED	-
DATE	1/29/2010	REVISED	-

STATE OF ILLINOIS
DEPARTMENT OF TRANSPORTATION

DISTRICT ONE STANDARD DETAILS
BD400-05

SCALE:	SHEET NO.	OF	SHEETS	STA.	TO STA.
--------	-----------	----	--------	------	---------

F.A.P. RTE.	SECTION	COUNTY	TOTAL SHEETS	SHEET NO.
335	120 R-1-1	LAKE	18	18A
CONTRACT NO. 60J54				
ILLINOIS FED. AID PROJECT				