

| | | | | |
|---------------------|---------|----------|--------------------|-----------|
| F.A. RTE. | SECTION | COUNTY | TOTAL SHEETS | SHEET NO. |
| 344 | 97B-1-1 | COOK | 16 | 1 |
| FED ROAD DIST No. 1 | | ILLINOIS | CONTRACT No. 60J60 | |

STATE OF ILLINOIS
DEPARTMENT OF TRANSPORTATION
DIVISION OF HIGHWAYS

**PROPOSED
HIGHWAY PLANS**

FAP 344 / IL 83 (ELMHURST RD.) AT McDONALD CREEK
BRIDGE DECK OVERLAY, JOINT REPAIR
SECTION 97 B-I-1
PROJECT NO. *NHF-0344(051)*
COOK COUNTY
C-91-250-10

FOR INDEX OF SHEETS, SEE SHEET NO. 2

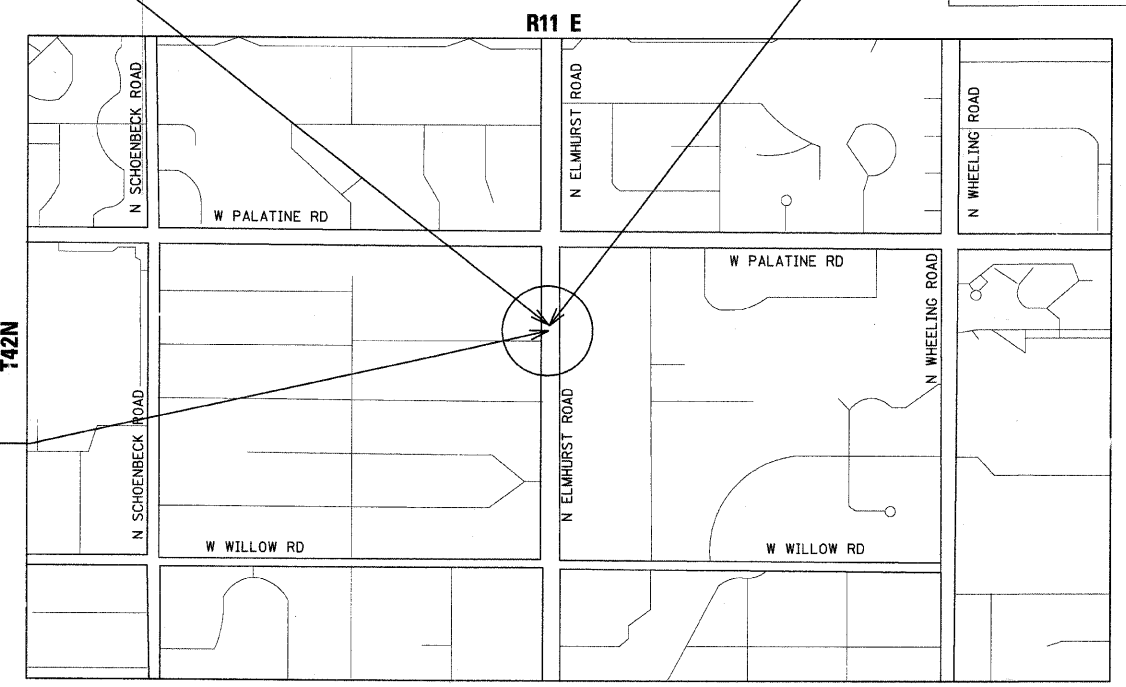
TRAFFIC DATA:
EXISTING ADT IL 83 20300 (2007)
POSTED SPEED = 40 MPH



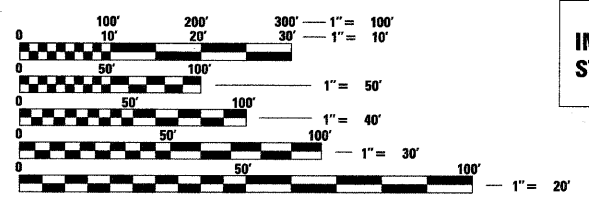
PROJECT LOCATION
IL 83 OVER McDONALD CREEK
STRUCTURE NO. 016-0558

IMPROVEMENT ENDS
STA. 744 + 00.00

IMPROVEMENT BEGINS
STA. 743 + 36.83



PROJECT IS LOCATED IN THE
CITY OF PROSPECT HEIGHTS



FULL SIZE PLANS HAVE BEEN PREPARED USING STANDARD
ENGINEERING SCALES. REDUCED SIZED PLANS WILL NOT
CONFORM TO STANDARD SCALES. IN MAKING MEASUREMENTS
ON REDUCED PLANS, THE ABOVE SCALES MAY BE USED.

J.U.L.I.E.
JOINT UTILITY LOCATION INFORMATION FOR EXCAVATION
1-800-892-0123 OR 811

PROJECT MANAGER RAJENDRA SHAH (847) 705-4555
PROJECT ENGINEER MICHELLE AQUINO (847) 705-4606
CONTRACT NO. 60J60

GROSS LENGTH OF PROJECT = 63.17 FEET = 0.012 MILES
NET LENGTH OF PROJECT = 63.17 FEET = 0.012 MILES

STATE OF ILLINOIS
DEPARTMENT OF TRANSPORTATION
DIVISION OF HIGHWAYS

SUBMITTED *JANUARY 22, 2010*

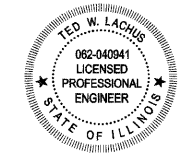
Diana M. O'Keefe *DE*
DEPUTY DIRECTOR OF HIGHWAYS, REGION ENGINEER

March 9 2010
Scott E. Stitt, P.E.
ACTING ENGINEER OF DESIGN AND ENVIRONMENT

March 19 2010
Christina M. Reed
DIRECTOR OF HIGHWAYS, CHIEF ENGINEER

PRINTED BY THE AUTHORITY
OF THE STATE OF ILLINOIS

Primera
100 S. WACKER DRIVE SUITE 700. CHICAGO IL 60606.
P:312-606-0910 F:312-606-0415



Ted W. Lachus
TED W. LACHUS, P.E.
EXPIRES 11-30-2011

1-29-2010
DATE