

F.A.U. RTE.	SECTION	COUNTY	TOTAL SHEETS	SHEET NO.
2423	2009-119 RS	KANE	14	1
FED. ROAD DIST. NO.	ILLINOIS	CONTRACT NO.	60J71	

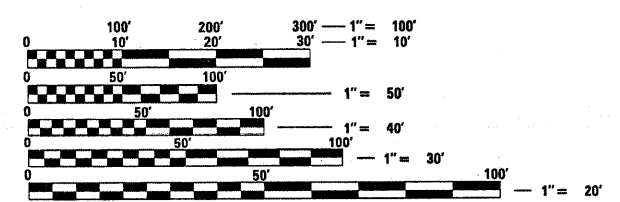
STATE OF ILLINOIS  
DEPARTMENT OF TRANSPORTATION  
DIVISION OF HIGHWAYS  
**PROPOSED HIGHWAY PLANS**  
FAU ROUTE 2423: FOOTHILL RD  
RANDALL RD TO AIRLITE ST  
SECTION: 2009-119 RS  
RESURFACING

FOR INDEX OF SHEETS, SEE SHEET NO. 2

THE PROJECT IS LOCATED IN THE CITY OF ELGIN

**TRAFFIC DATA**

ADT = NO DATA  
POSTED SPEED LIMIT = 40 MPH



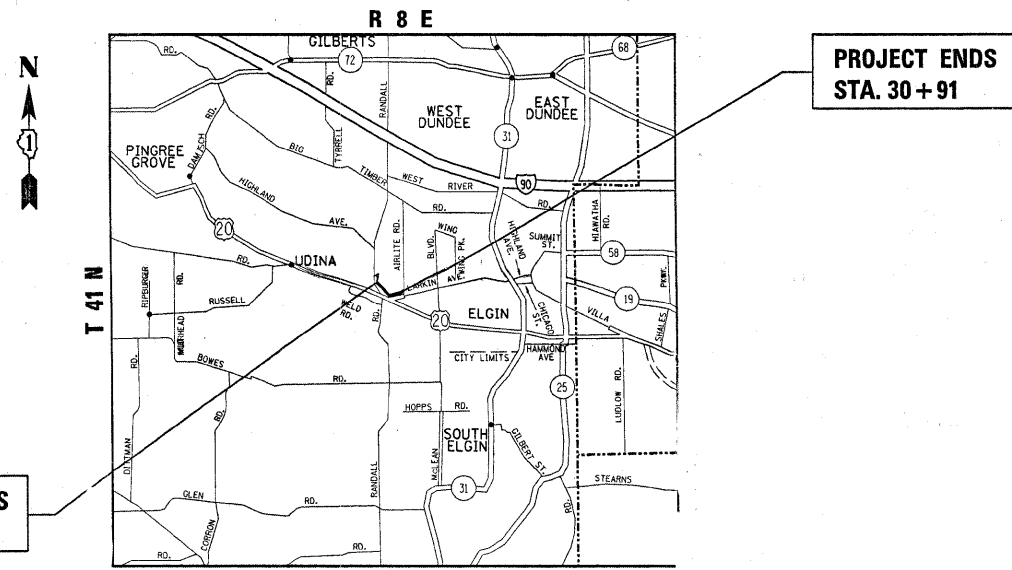
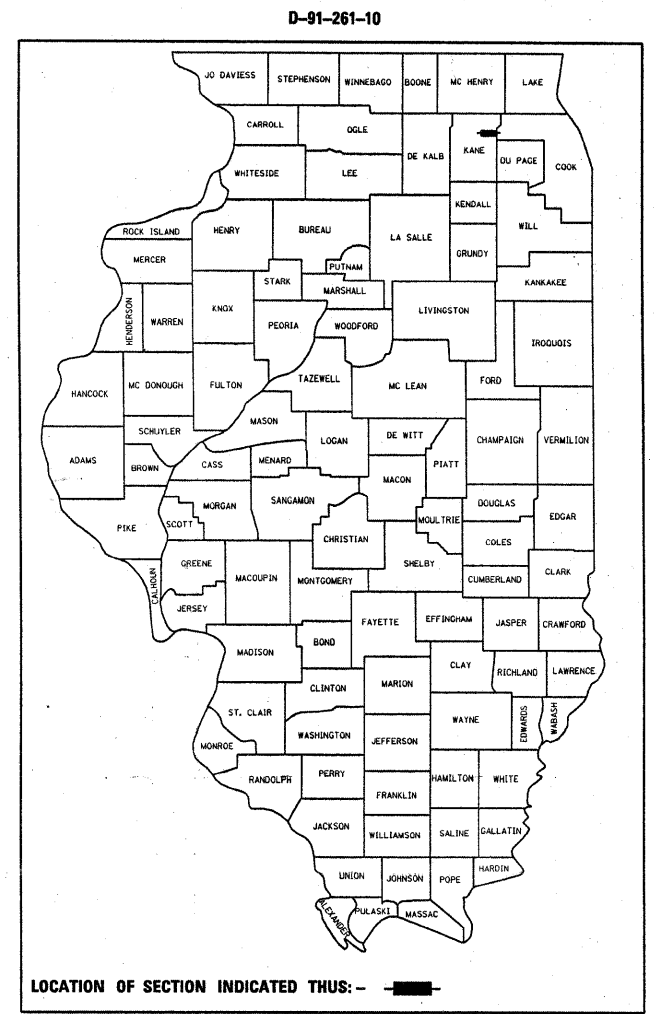
FULL SIZE PLANS HAVE BEEN PREPARED USING STANDARD ENGINEERING SCALES. REDUCED SIZED PLANS WILL NOT CONFORM TO STANDARD SCALES. IN MAKING MEASUREMENTS ON REDUCED PLANS, THE ABOVE SCALES MAY BE USED.

J.U.L.I.E.  
JOINT UTILITY LOCATION INFORMATION FOR EXCAVATION  
1-800-892-0123  
OR 811

PROJECT ENGINEER ROBERT BORO (847)705-4178  
PROJECT MANAGER KEN ENG

CONTRACT NO. 60J71

**KANE COUNTY**  
**C-91-261-10**



PROJECT BEGINS  
STA. 8+92

PROJECT ENDS  
STA. 30+91

ELGIN TOWNSHIP  
GROSS & NET LENGTH OF IMPROVEMENT = 2199 FEET = 0.42 MILES

STATE OF ILLINOIS  
DEPARTMENT OF TRANSPORTATION  
DIVISION OF HIGHWAYS

SUBMITTED February 3, 2010  
Dina M. O'Keefe DEPUTY DIRECTOR OF HIGHWAYS, REGION ENGINEER  
March 19, 2010  
Scott E. Stitt, P.E. ACTING ENGINEER OF DESIGN AND ENVIRONMENT  
March 19, 2010  
Christine M. Reed DIRECTOR OF HIGHWAYS, CHIEF ENGINEER

**PRINTED BY THE AUTHORITY  
OF THE STATE OF ILLINOIS**