

F.A.U. RTE.	SECTION	COUNTY	TOTAL SHEETS	SHEET NO.
1521	W-RS-5	KANE	16	1
		ILLINOIS	CONTRACT NO. 60J72	

STATE OF ILLINOIS
DEPARTMENT OF TRANSPORTATION
DIVISION OF HIGHWAYS
PROPOSED
HIGHWAY PLANS
FAU ROUTE 1521: GALENA BLVD
IL 47 TO IL 56
SECTION: W-RS-5
RESURFACING
PROJECT: - -
KANE COUNTY
C-91-262-10

FOR INDEX OF SHEETS, SEE SHEET NO. 2

D-91-262-10

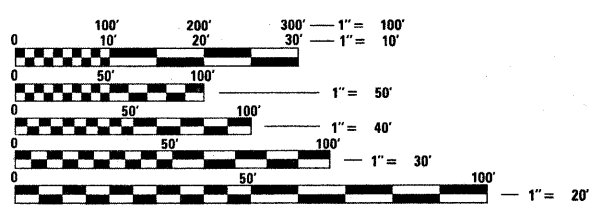


LOCATION OF SECTION INDICATED THUS: - [shaded box] -

THIS PROJECT IS LOCATED IN THE VILLAGE OF SUGAR GROVE

TRAFFIC DATA

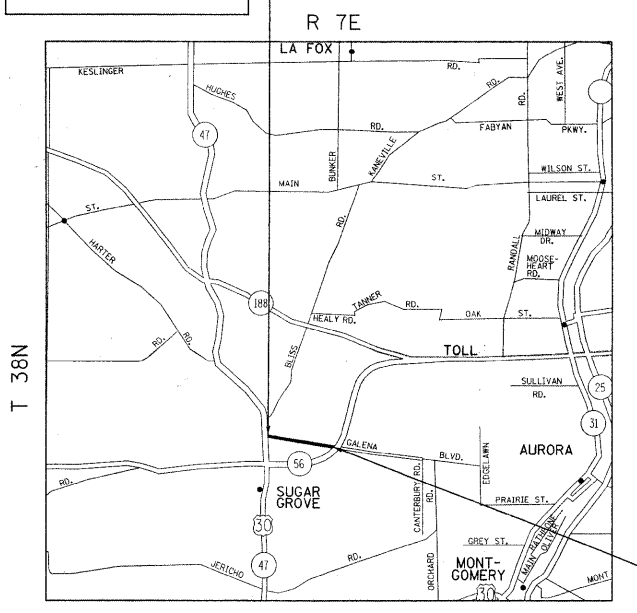
ADT (2006) = 7,700
 SPEED LIMIT = 55 MPH



FULL SIZE PLANS HAVE BEEN PREPARED USING STANDARD ENGINEERING SCALES. REDUCED SIZED PLANS WILL NOT CONFORM TO STANDARD SCALES. IN MAKING MEASUREMENTS ON REDUCED PLANS, THE ABOVE SCALES MAY BE USED.

J.U.L.I.E
 JOINT UTILITY LOCATION INFORMATION FOR EXCAVATION
 1-800-892-0123 OR 811

PROJECT BEGINS STATION 145+21



PROJECT ENDS STATION 187+68

SUGAR GROVE TOWNSHIP

GROSS AND NET LENGTH OF PROJECT = 4247 FT. = .80 MILE

STATE OF ILLINOIS
 DEPARTMENT OF TRANSPORTATION
 DIVISION OF HIGHWAYS
 SUBMITTED JANUARY 26, 2010
Diane M. O'Keefe
 DEPUTY DIRECTOR OF HIGHWAYS, REGION ENGINEER
April 9, 2010
Scott E. Still, P.E.
 ACTING ENGINEER OF DESIGN AND ENVIRONMENT
April 9, 2010
Christine M. Reed
 DIRECTOR OF HIGHWAYS, CHIEF ENGINEER

PRINTED BY THE AUTHORITY
OF THE STATE OF ILLINOIS

PROJECT ENGINEER: DAN WILGREEN / (847) 705-4240
 PROJECT MANAGER KEN ENG / (847) 705-4247
 CONTRACT NO. 60J72