

STR.	STATION	OFFSET	LT./RT.	INLET TY. A, TY. 11 F&G	INLET TY. B, TY. 11 F&G	MH. TY. A, 5', TY. 11 CLOSED LID	MH. TY. A, 7', TY. 1 CLOSED LID	C.B. TY. A, 4', TY. 1 CLOSED LID	C.B. TY. A, 5', TY. 11 F&G	STRUCTURE INVERTS				T/C ELEV. (RIM ELEV. IF NO T/C)									
										N	S	E	W										
2	201+93	14.50	LT.	EACH	EACH									885.81									
3	201+93	6.00	RT.											885.51									
4	201+93	23.50	RT.											885.63									
5	202+87	14.50	LT.	1										885.40									
6	202+94	14.50	LT.											885.40									
7	202+94	6.00	RT.											885.10									
8	202+87	23.50	RT.	1										885.22									
9	202+94	23.50	RT.											885.22									
10	204+25	14.50	LT.											886.33									
11	204+25	6.00	RT.											886.03									
12	204+25	23.50	RT.											886.15									
TOTALS											2	4	1	1	1	1	1	1					

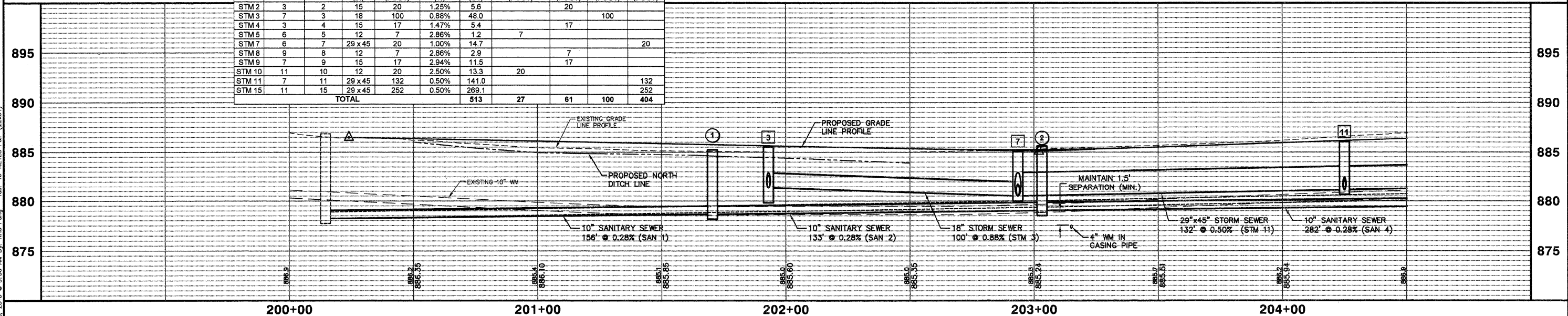
STR.	STATION	OFFSET	LT./RT.	FIRE HYDRANT ASSEMBLY COMPLETE	BURY ELEV.
1	201+98	22.1	LT	(EACH)	889.40
TOTALS					1

STR.	STATION	OFFSET	LT./RT.	4" GATE VALVE IN V. BOX (EACH)	RIM ELEV.
1	203+16	6.5	LT	1	885.14
TOTALS					1

STR.	STATION	OFFSET	LT/RT	SAN MH TY. A 4' DIA. TY. 1 FR CL	STRUCTURE INVERTS				RIM ELEV.
					N	S	E	W	
1	201+71	17.7	RT	1					878.65
2	203+03	17.7	RT	1					879.03
TOTALS					2				879.03

PIPE #	D.S. STR.	U.S. STR.	LENGTH (FT)	SLOPE (%)	TRENCH BACKFILL (CY)	8"	10"	10"	
						SDR-26 (FOOT)	SDR-26 (FOOT)	SDR-21 (FOOT)	
SAN 1	Ex MH	1	156	0.28	285.1				
SAN 2	1	2	133	0.28	225.7			133	
SAN 3	2	-	23	0.40	16.2	23			
SAN 4	2	3	282	0.28	551.5			282	
TOTAL						1,079	23	156	415

PIPE #	D.S. STR.	U.S. STR.	PIPE DIA. (IN)	LENGTH (FOOT)	SLOPE (%)	TRENCH BACKFILL (CY)	S.S. CL. A TY. 1, 12"	S.S. CL. A TY. 1, 15"	S.S. CL. A TY. 1, 18"	S.S. CL. A TY. 1, EQUIV. 36"					
							(FOOT)	(FOOT)	(FOOT)	(FOOT)					
STM 2	3	2	15	20	1.25%	5.6		20							
STM 3	7	3	18	100	0.88%	48.0			100						
STM 4	3	4	15	17	1.47%	5.4		17							
STM 5	6	5	12	7	2.86%	1.2	7								
STM 7	6	7	29x45	20	1.00%	14.7				20					
STM 8	9	8	12	7	2.86%	2.9		7							
STM 9	7	9	15	17	2.94%	11.5		17							
STM 10	11	10	12	20	2.50%	13.3	20								
STM 11	7	11	29x45	132	0.50%	141.0				132					
STM 15	11	15	29x45	252	0.50%	269.1				252					
TOTAL											513	27	61	100	404



COPYRIGHT © 2010 ENGINEERING ENTERPRISES, INC.
 FILE NAME: USER NAME = #USER#
 FILE#: #FILE#
 DESIGNED - JAM, SWM
 DRAWN - KKP
 CHECKED - JAM
 DATE - 10/16/09
 REVISED - 12/02/09
 REVISED - 01/22/10
 REVISED - 02/03/10
 REVISED - _____

STATE OF ILLINOIS
DEPARTMENT OF TRANSPORTATION

KEYES AVENUE DRAINAGE AND UTILITIES SHEET

PROJECT NO. HPP-1468(004) JOB NO. C-91-175-06
 SCALE: 1"=20' SHEET NO. 43 OF 92 SHEETS STA. N/A TO STA. N/A

F.A. - RTE.	SECTION	COUNTY	TOTAL SHEETS	SHEET NO.
N/A	06-00015-00-PV	KANE	97	46
FED. ROAD DIST. NO. - ILLINOIS/FED. AID PROJECT			CONTRACT NO. 63406	

Plotted: February 8, 2010 @ 9:30 AM By: Kris Pung - Tab: 46-KEYES P&P (2/23/10)

Path: S:\SPROJ\NAGEB7\DWG\NAGEB7.DWG FINAL ENG\NAGEB7-PP UTILITY