

NOTE:
CONTRACTOR TO EXPOSE
EXISTING UTILITIES AT
"UTILITY CROSSING"
LOCATIONS PRIOR TO THE
START OF CONSTRUCTION.

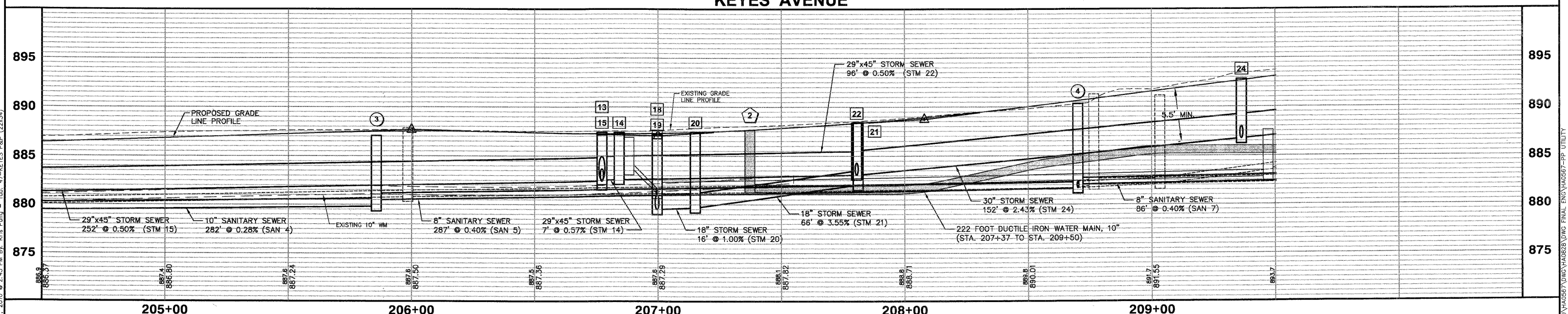
STORM SEWER STRUCTURE SCHEDULE														
STR.	STATION	OFFSET	LT./RT.	INLET TY. A, TY. 11 F&G		INLET TY. A, TY. 11V, F&G		INLET TY. B, TY. 11, F&G		MH. TY. A, 4', TY. 11V, F&G		MH. TY. A, 4', TY. 1, CLOSED LID		T/C ELEV. (RIM ELEV. IF NO T/C)
				N	S	E	W							
13	206+77	14.53	LT.											887.40
14	206+84	15.92	LT.											887.43
15	206+77	6.00	RT.											887.14
16	206+77	23.50	RT.											887.25
17	206+84	23.50	RT.											887.25
18	207+00	6.00	RT.											887.18
19	207+00	29.50	RT.											887.10
20	207+15	29.50	RT.											887.40
21	207+81	29.50	RT.											888.40
22	207+81	14.50	LT.											888.52
23	207+81	23.45	RT.											888.34
24	209+36	16.00	LT.											892.82
25	209+36	16.00	RT.											892.81
TOTALS				1	2	1	1	3	1	1	1	1		

STORM SEWER DRAINAGE SCHEDULE												
PIPE #	D.S. STR.	U.S. STR.	PIPE DIA.	LENGTH	SLOPE	TRENCH BACKFILL	S.S. CL. A TY. 1, 15"	S.S. R.G. CL. A TY. 1, 15"	S.S. CL. A TY. 1, 18"	S.S. CL. A TY. 1, 30"	S.S. CL. A TY. 1, EQUIV. 36"	RIM ELEV.
STM 13	15	13	29 x 45	21	0.52%	18.9					21	887.40
STM 14	13	14	29 x 45	7	0.57%	5.9					7	887.43
STM 16	15	16	15	17	3.00%	11.6	17					887.14
STM 17	16	17	15	7	2.86%	2.6	7					887.25
STM 19	18	19	18	23	0.09%	29.8		23				887.25
STM 20	19	20	18	16	1.00%	20.5		16				887.18
STM 21	20	21	18	66	3.55%	71.4		66				887.10
STM 22	14	22	29 x 45	96	0.50%	81.2					96	887.40
STM 23	22	23	15	38	2.61%	26.2		38				888.40
STM 24	22	24	30	152	2.43%	140.1			152			888.52
STM 25	24	25	15	32	3.00%	20.6		32				888.34
STM 26	24	26	30	79	2.43%	79.6						892.82
TOTAL				509	24	70	105	231	124			

SANITARY SEWER STRUCTURE SCHEDULE									
STR.	STATION	OFFSET	LT./RT.	SAN MH TY. A 4' DIA. TY. 1 F, CL EACH	STRUCTURE INVERTS				RIM ELEV.
					N	S	E	W	
3	205+86	17.7	RT	1	879.98 (6")		880.49	879.81	887.06
4	208+70	22.0	RT	1	881.69		882.09	881.64	890.33
TOTALS				2					

SANITARY SEWER SCHEDULE									
PIPE #	D.S. STR.	U.S. STR.	LENGTH	SLOPE	TRENCH BACKFILL	8" SDR-26		8" SDR-21	
						(CY)	(FOOT)	(CY)	(FOOT)
SAN 5	3	4	287	0.40	569.1				287
SAN 6	4	Ex MHB	35	0.89	39.3			35	
SAN 7	4	5	86	0.40	102.2			86	
TOTAL						711	121	287	

SCALE:
HORIZONTAL 1" = 20'
VERTICAL 1" = 5'



FILE NAME #FILE#		USER NAME = #USER#		DESIGNED - JAM, SWM		REVISED - 12/02/09		DRAWN - KKP		REVISED - 01/22/10		CHECKED - JAM		REVISED - 02/03/10		DATE - 10/16/09		REVISED -	
PLOT SCALE = #SCALE#		PLOT DATE = #DATE#		STATE OF ILLINOIS DEPARTMENT OF TRANSPORTATION		KEYES AVENUE DRAINAGE AND UTILITIES SHEET		PROJECT NO. HPP-1468(004)		JOB NO. C-91-175-06		SECTION 06-00015-00-PV		COUNTY KANE		TOTAL SHEETS 97		SHEET NO. 47	
SCALE: 1/4"=20'		SHEET NO. 44 OF 92 SHEETS		STA. N/A TO STA. N/A		FEDERAL ROAD DIST. NO. - [ILLINOIS] FED. AID PROJECT		CONTRACT NO. 63406											

Plotted: February 1, 2010 @ 2:45 PM By: Kie Pung - Tab: 47-KEYES P&P (22,34)
 Copyright © 2010 ENGINEERING ENTERPRISES, INC.

Path: H:\S\SKR\00\H0597\DWG\H0597-PP-UTILITY