

NOTE: CONTRACTOR TO EXPOSE EXISTING UTILITIES AT "UTILITY CROSSING" LOCATIONS TO VERIFY ELEVATION PRIOR TO THE START OF CONSTRUCTION.

VALVE VAULT SCHEDULE						
STR.	STATION	OFFSET	LT./RT.	8" GATE VALVE IN 4' VV (EACH)	10" GATE VALVE IN 5' VV (EACH)	RIM ELEV.
3	213+40	24.9	LT	1	1	902.42
3A	212+88	21.0	RT	1	1	901.00
<b>TOTALS</b>						

FIRE HYDRANT SCHEDULE					
STR.	STATION	OFFSET	LT./RT.	FIRE HYDRANT ASSEMBLY COMPLETE (EACH)	BURY ELEV.
4	211+60	28.0	LT	1	897.60
8	212+98	54.0	RT	1	901.50
<b>TOTALS</b>					

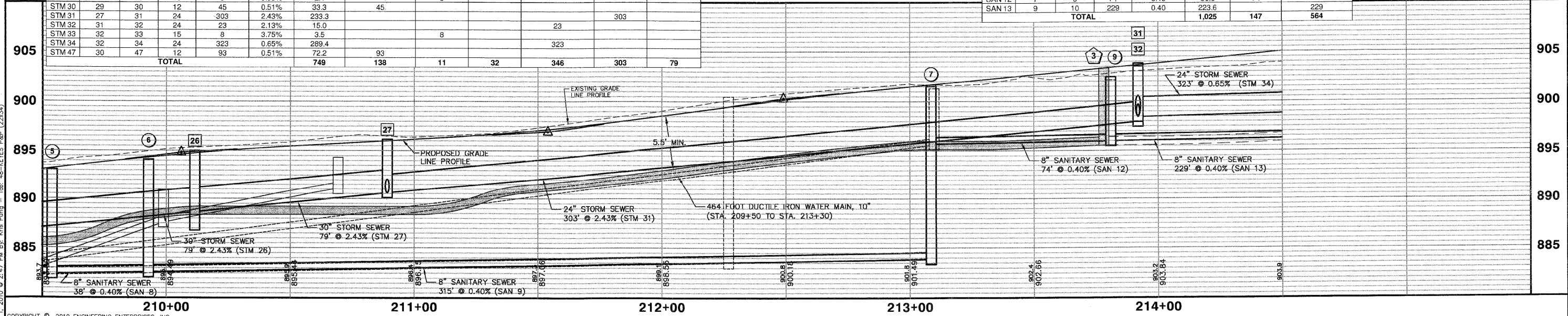
STORM SEWER STRUCTURE SCHEDULE																	
STR.	STATION	OFFSET	LT./RT.	INLET TY. A, TY. 11 F&G	INLET TY. A, TY. 11V, F&G	INLET TY. A, TY. 1 CLOSED LID	INLET TY. B, TY. 1, CLOSED LID	MH. TY. A, 4', TY. 11V F&G	MH. TY. A, 4', TY. 1 CLOSED LID	C.B. TY. A, 4', TY. 11V F&G	C.B. TY. A, 4', TY. 1 CLOSED LID	STRUCTURE INVERTS				T/C ELEV. (RIM ELEV. IF NO T/C)	
												N	S	E	W		
26	210+11	24.13	LT.	EACH	EACH	EACH	EACH	EACH	EACH	EACH	EACH	1					894.99
27	210+89	16.00	LT.					1					890.58	888.66	888.66		896.15
28	210+89	16.00	RT.							1			891.54	891.54	890.58	890.58	896.15
29	210+89	18.00	RT.	1									891.70	891.70			896.35
30	210+89	63.74	RT.														896.86
31	213+92	16.00	LT.					1					891.93	891.93			896.86
32	213+92	7.25	RT.										897.94	897.94	897.94		903.81
33	213+92	16.00	RT.										898.43	899.07	898.43		903.52
39	213+92	16.00	RT.										899.37				903.81
47	211+81	63.74	RT.														897.90
<b>TOTALS</b>				1	1	1	1	2	1	1	1						

SANITARY SEWER STRUCTURE SCHEDULE													
STR.	STATION	OFFSET	LT./RT.	SAN MH TY. A 4' DIA. TY. 1 F. CL	SAN MH TY. A 5' DIA. TY. 1 F. CL	STRUCTURE INVERTS				RIM ELEV.			
						N	S	E	W				
5	209+54	9.50	RT							883.27 (6")	882.44	882.44	893.10
6	209+93	9.50	RT	1						882.60	882.60	882.60	894.11
7	213+09	9.50	RT		1					883.86	895.45	895.67	901.52
7A	213+11	45.0	RT	1						895.60	896.05		901.30
8	213+09	10.5	LT		1					883.94	883.94		901.48
9	213+81	7.25	LT		1						895.97	895.97	903.18
<b>TOTALS</b>				5	1								

STORM SEWER DRAINAGE SCHEDULE												
PIPE #	D.S. STR.	U.S. STR.	PIPE DIA. (IN)	LENGTH (FOOT)	SLOPE (%)	TRENCH BACKFILL (CY)	S.S. CL. B TY. 1, 12" (SDR-26)	S.S. CL. A TY. 1, 15" (FOOT)	S.S. R.G. CL. A TY. 1, 18" (FOOT)	S.S. CL. A TY. 1, 24" (FOOT)	S.S. R.G. CL. A TY. 1, 24" (FOOT)	S.S. CL. A TY. 1, 30" (FOOT)
STM 27	26	27	30	79	2.43%	74.1						79
STM 28	27	28	18	32	3.00%	25.8						
STM 29	28	29	15	3	5.33%	2.4			3	32		
STM 30	29	30	12	45	0.51%	33.3	45					
STM 31	27	31	24	303	2.43%	233.3					303	
STM 32	31	32	24	23	2.13%	15.0			23			
STM 33	32	33	15	8	3.75%	3.5			8			
STM 34	32	34	24	323	0.65%	289.4			323			
STM 47	30	47	12	93	0.51%	72.2	93					
<b>TOTAL</b>						<b>749</b>	<b>138</b>	<b>11</b>	<b>32</b>	<b>346</b>	<b>303</b>	<b>79</b>

SANITARY SEWER SCHEDULE							
PIPE #	D.S. STR.	U.S. STR.	LENGTH (FT)	SLOPE (%)	TRENCH BACKFILL (CY)	8" SDR-26 (FOOT)	8" SDR-21 (FOOT)
SAN 8	5	6	38	0.40	58.2	38	
SAN 9	6	7	315	0.40	616.0		315
SAN 10	7	8	20	0.40	47.0		20
SAN 11	7	7A	35	0.43	24.2		35
SAN 12	7	9	74	0.40	56.0		74
SAN 13	9	10	229	0.40	223.6		229
<b>TOTAL</b>					<b>1,025</b>	<b>147</b>	<b>564</b>

SCALE:  
HORIZONTAL 1" = 20'  
VERTICAL 1" = 5'



Copyright © 2010 Engineering Enterprises, Inc.

FILE NAME	USER NAME = #USER#	DESIGNED - JAM, SWM	REVISED - 12/02/09	<b>STATE OF ILLINOIS</b> <b>DEPARTMENT OF TRANSPORTATION</b>	F.A. RTE.	SECTION	COUNTY	TOTAL SHEETS	SHEET NO.
#FILE#		DRAWN - KKP	REVISED - 01/22/10		N/A	06-00015-00-PV	KANE	97	48
PLOT SCALE = #SCALE#		CHECKED - JAM	REVISED - 02/03/10		PROJECT NO. HPP-1468(004)	JOB NO. C-91-175-06	CONTRACT NO. 63406		
PLOT DATE = #DATE#		DATE - 10/16/09	REVISED -		SCALE: 1"=20'	SHEET NO. 45 OF 92 SHEETS	STA. N/A	TO STA. N/A	FED. ROAD DIST. NO. - [ILLINOIS] FED. AID PROJECT

Plotted: February 1, 2010 @ 2:47 PM By: Kfir Puna - Job: 48-KEYES P&P (22x34)

Path: \\S:\KROVA\H0567\DWG\H0567\DWG\_FINAL\ENG\H0567-PP-UTILITY