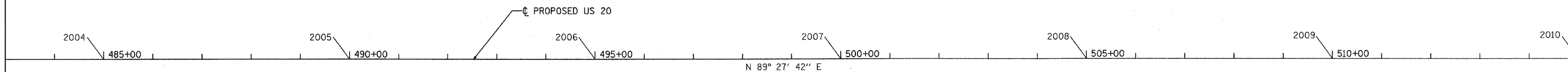


F.A. RTE.	SECTION	COUNTY	TOTAL SHEETS	SHEET NO.
301	177-2 (-1A, B-1, VB-1)	STEPHENSON	386	40
STA. 83+00.00 TO STA. 90+00.00				
STA. 483+00.00 TO STA. 547+00.00				
FED. ROAD DIST. NO.		ILLINOIS	FED. AID PROJECT	
P-92-029-02		ALIGN-2 OF 6		



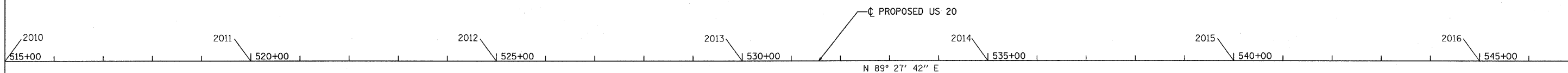
MATCH LINE STA. 482+00 SEE ALIGN-1

MATCH LINE STA. 515+00



MATCH LINE STA. 515+00

MATCH LINE STA. 547+00 SEE SHEET ALIGN-3



REVISIONS	
NAME	DATE

ILLINOIS DEPARTMENT OF TRANSPORTATION  
 F.A.P. ROUTE 301 (US RTE. 20)  
 FROM BOLTON ROAD TO WEST OF IL RTE. 26  
 ALIGNMENT, TIES AND  
 BENCHMARKS



SCALE: 1"=100'  
 DATE: 01-22-10  
 DRAWN BY: RMH  
 CHECKED BY: DVS