

F.A. RTE.	SECTION	COUNTY	TOTAL SHEETS	SHEET NO.
301	177-2 (-1A, B-1, VB-1)	STEPHENSON	386	43
STA. 611+00.00	TO STA. 666+42.73			
FED. ROAD DIST. NO.	ILLINOIS FED. AID PROJECT			
P-92-029-02	ALIGN-5 OF 6			

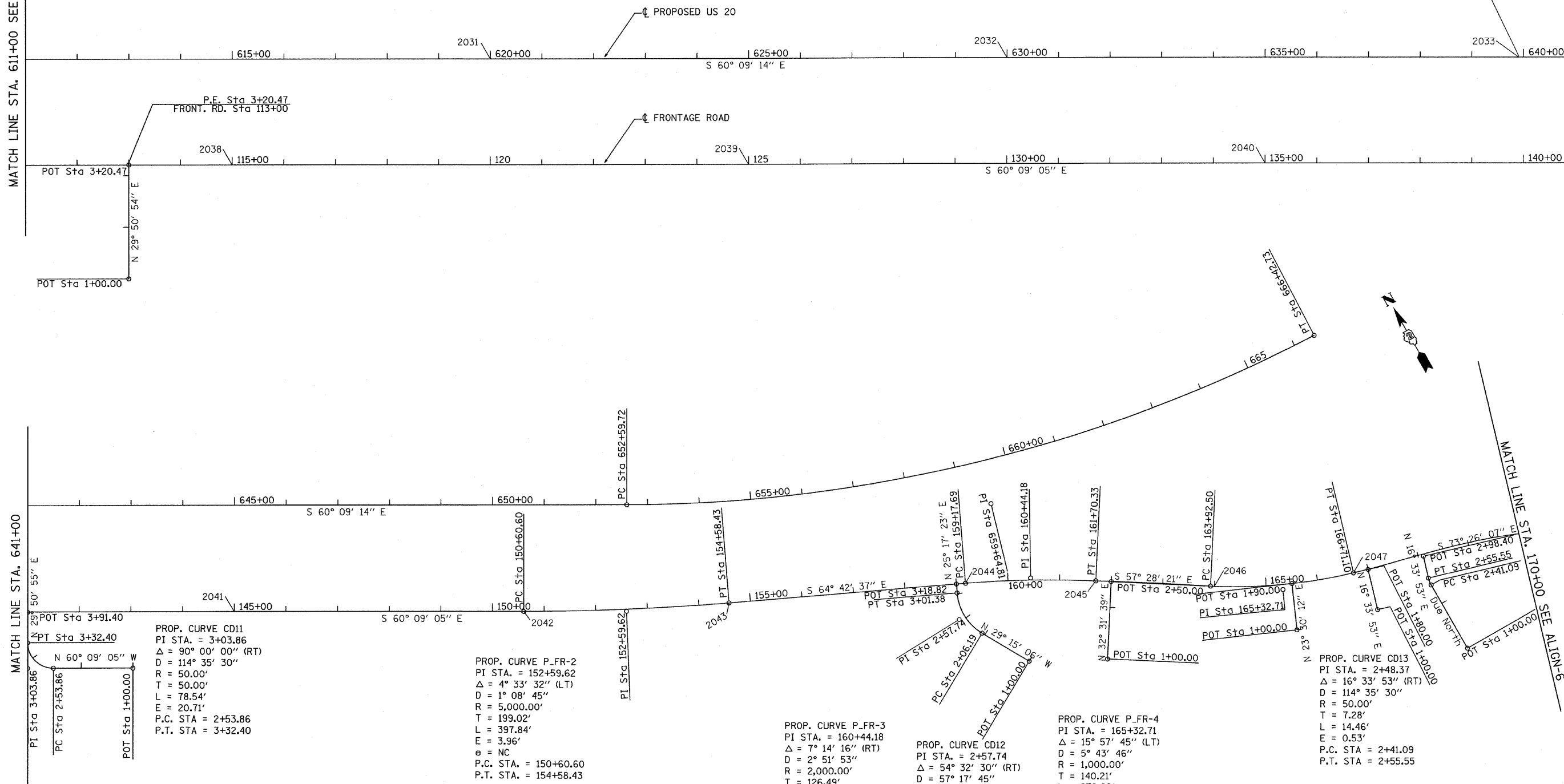
END PROJECT
STA 639+91.09 @ US 20

MATCH LINE STA. 611+00 SEE SHEET ALIGN-4

MATCH LINE STA. 641+00

MATCH LINE STA. 641+00

MATCH LINE STA. 10+00 SEE ALIGN-6



REVISIONS	
NAME	DATE

ILLINOIS DEPARTMENT OF TRANSPORTATION
F.A.P. ROUTE 301 (US RTE. 20)
FROM BOLTON ROAD TO WEST OF IL RTE. 26
ALIGNMENT, TIES AND BENCHMARKS

SCALE: 1"=100'
DATE: 01-22-10
DRAWN BY RMH
CHECKED BY DVS

