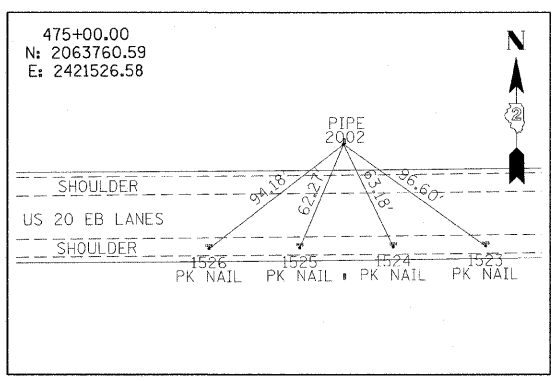
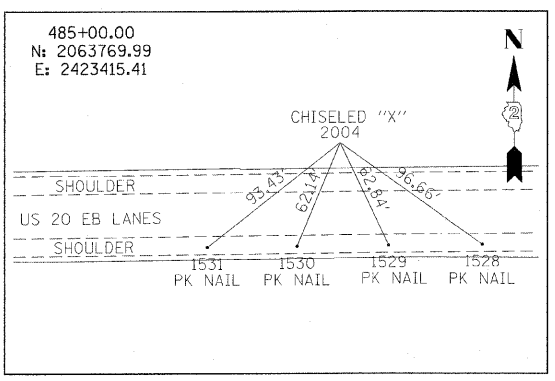


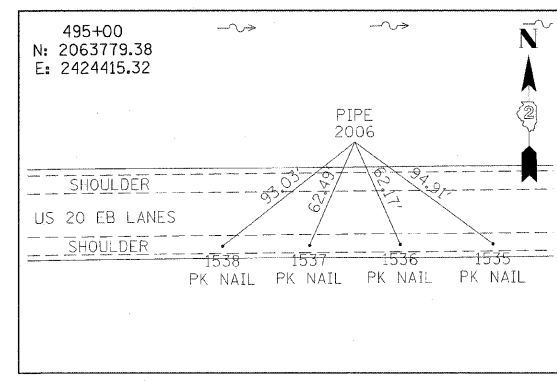
MAINLINE 66+07.36



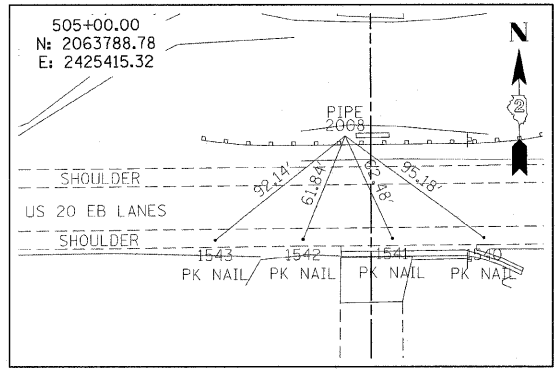
MAINLINE 475+00.00



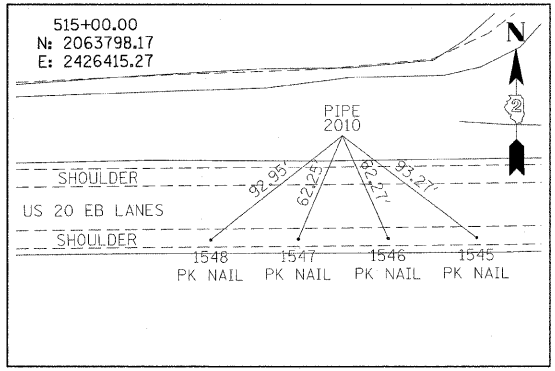
MAINLINE 485+00.00



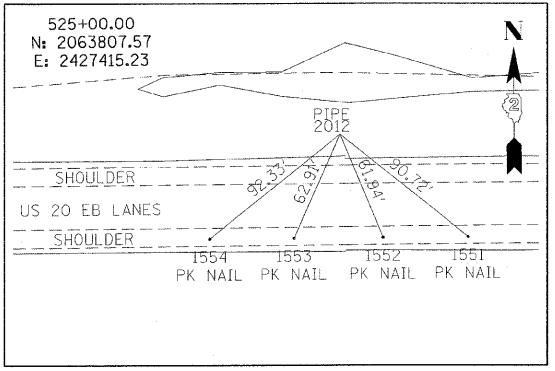
MAINLINE 495+00.00



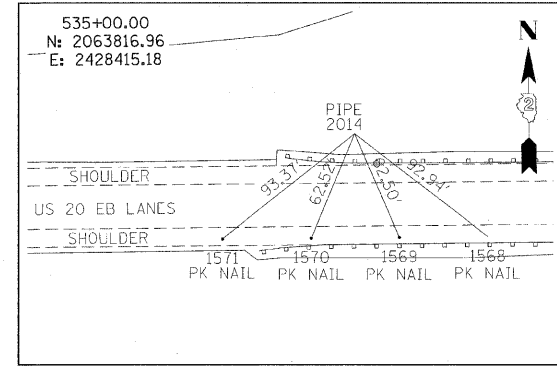
MAINLINE 505+00.00



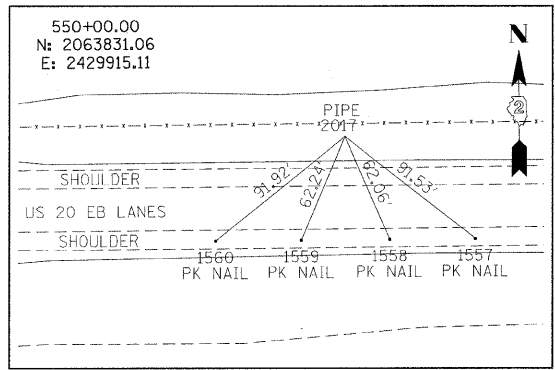
MAINLINE 515+00.00



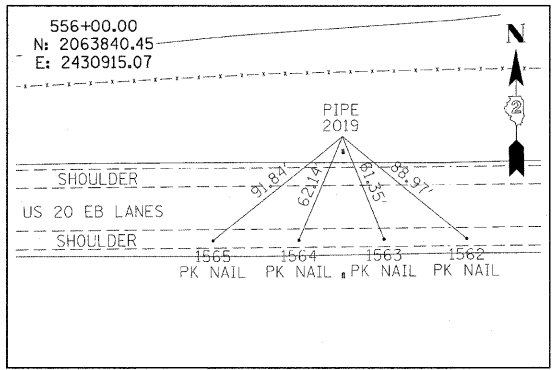
MAINLINE 525+00.00



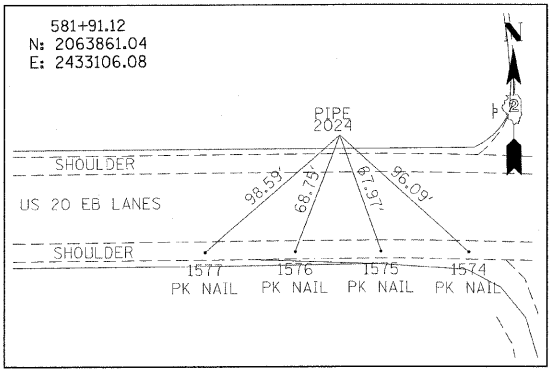
MAINLINE 535+00.00



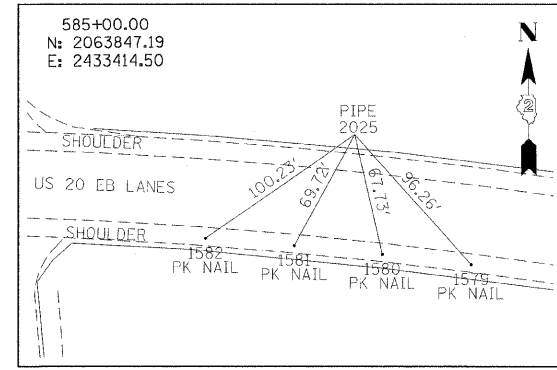
MAINLINE 550+00.00



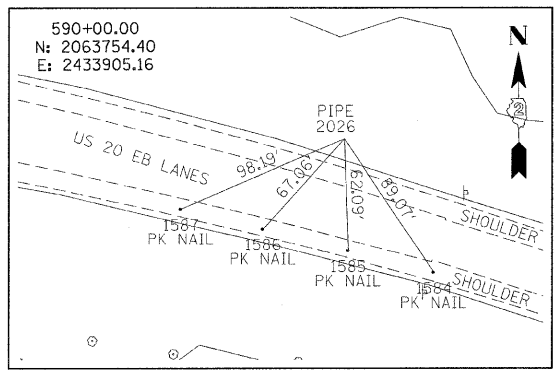
MAINLINE 556+00.00



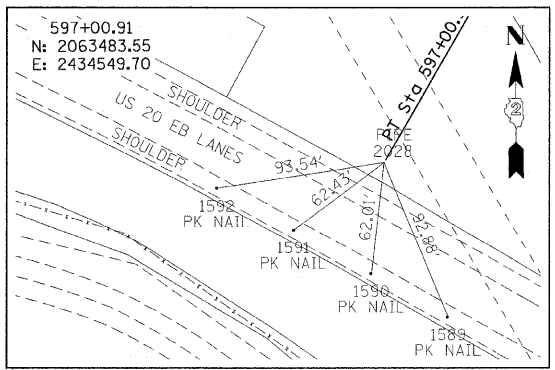
MAINLINE 581+91.12



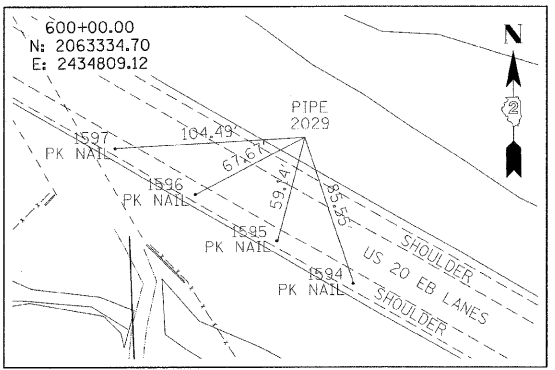
MAINLINE 585+00.00



MAINLINE 590+00.00



MAINLINE 597+00.91



MAINLINE 600+00.00

REVISIONS	
NAME	DATE

ILLINOIS DEPARTMENT OF TRANSPORTATION
F.A.P. ROUTE 301 (US RTE. 20)
FROM BOLTON ROAD TO WEST OF IL RTE. 26

ALIGNMENT, TIES
AND BENCHMARKS

SCALE: DATE: 01-22-10

DRAWN BY SJV
CHECKED BY RMH

