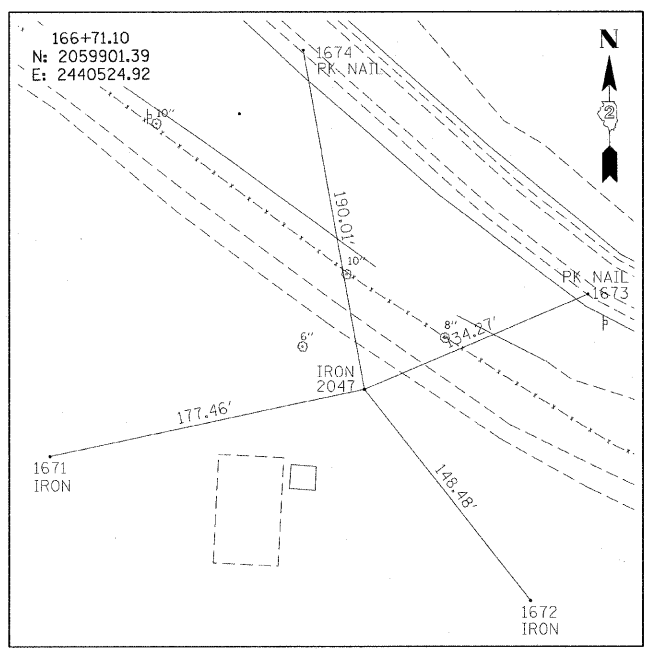
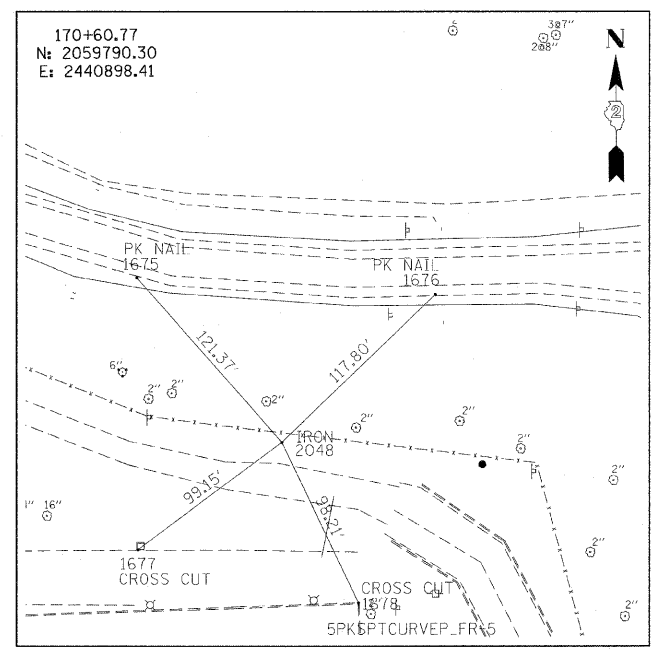


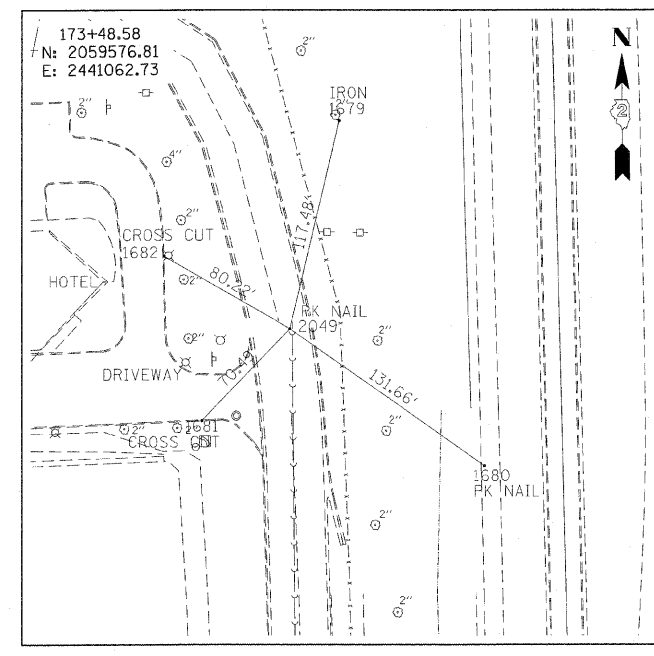
F.A.P. RTE.	SECTION	COUNTY	TOTAL SHEETS	SHEET NO.
301	177-2 (-1A, B-1, VB-1)	STEPHENSON	386	49
STA.	TO STA.			
FED. ROAD DIST. NO.	ILLINOIS FED. AID PROJECT			
P-92-029-02				
CONTRACT #64799				



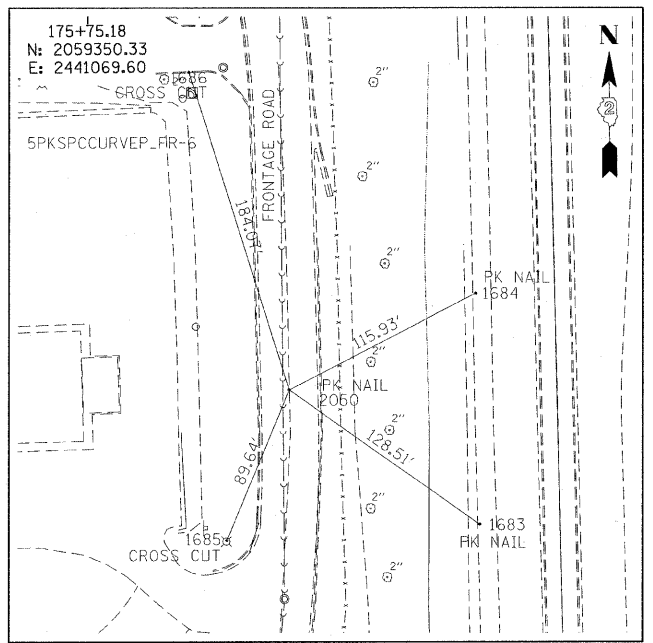
FRONTAGE ROAD 166+71.10



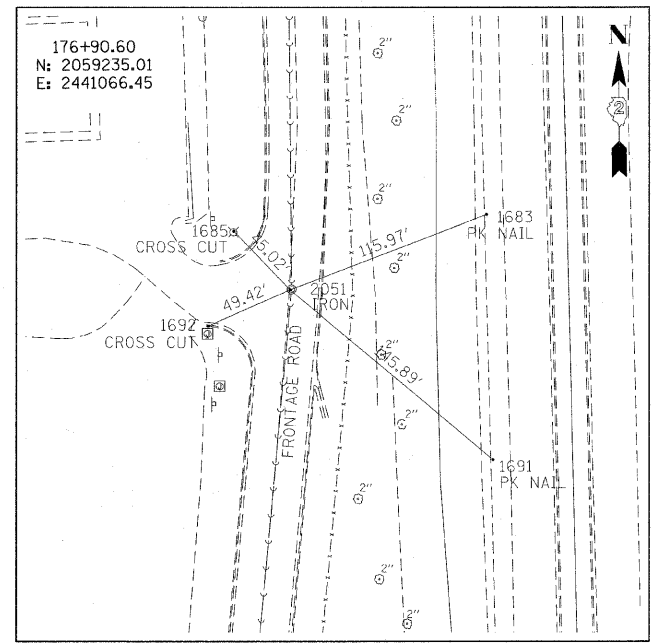
FRONTAGE ROAD 170+60.77



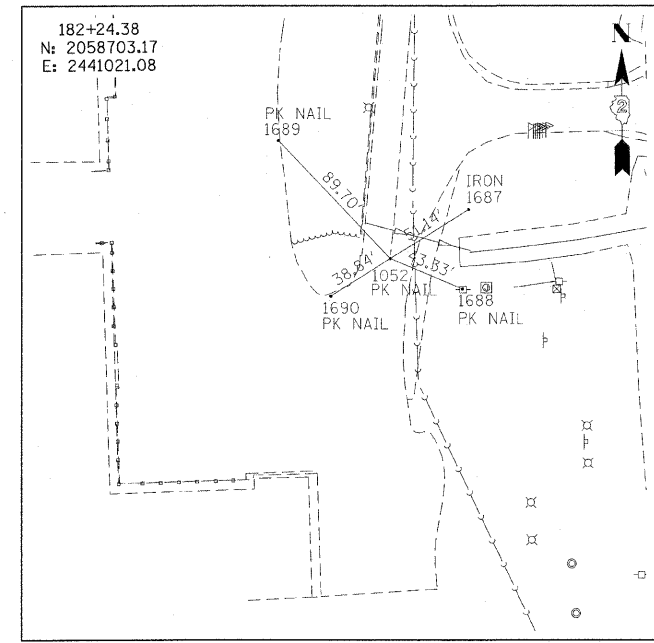
FRONTAGE ROAD 173+48.58



FRONTAGE ROAD 175+75.18



FRONTAGE ROAD 176+90.60



FRONTAGE ROAD 182+24.38

REVISIONS	
NAME	DATE

ILLINOIS DEPARTMENT OF TRANSPORTATION
F.A.P. ROUTE 301 (US RTE. 20)
FROM BOLTON ROAD TO WEST OF IL RTE. 26

ALIGNMENT, TIES
AND BENCHMARKS

SCALE: DATE: 01-22-10

DRAWN BY SJV
CHECKED BY RMH

