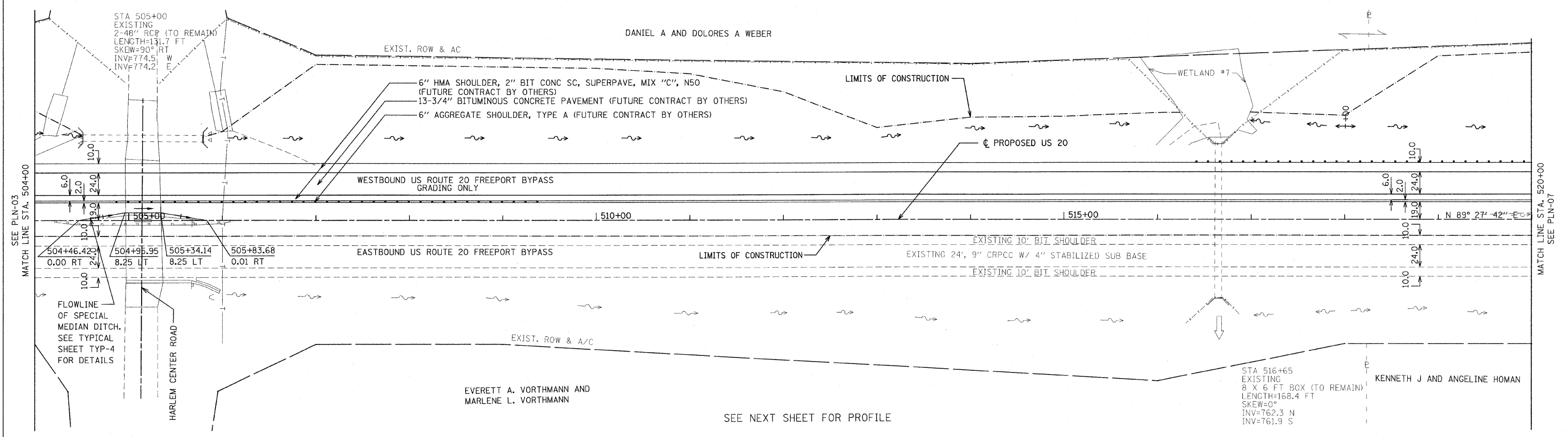


F.A.P. RTE.	SECTION	COUNTY	TOTAL SHEETS	SHEET NO.
301	177-2 (-1A, B-1, VB-1)	STEPHENSON	386	54
STA.	504+00	TO STA.	520+00	
FED. ROAD DIST. NO.	ILLINOIS	FED. AID PROJECT		
P-92-029-02				PLN-05 OF 32
CONTRACT #64799				



SEE PLN-03  
MATCH LINE STA. 504+00

MATCH LINE STA. 520+00  
SEE PLN-07

SEE NEXT SHEET FOR PROFILE

REVISIONS	
NAME	DATE

ILLINOIS DEPARTMENT OF TRANSPORTATION  
F.A.P. ROUTE 301 (US RTE. 20)  
FROM BOLTON ROAD TO WEST OF IL RTE. 26  
  
PLAN  
WESTBOUND U.S. ROUTE 20



SCALE: 1"=50'  
DATE: 01-22-10  
DRAWN BY: RMH  
CHECKED BY: DM