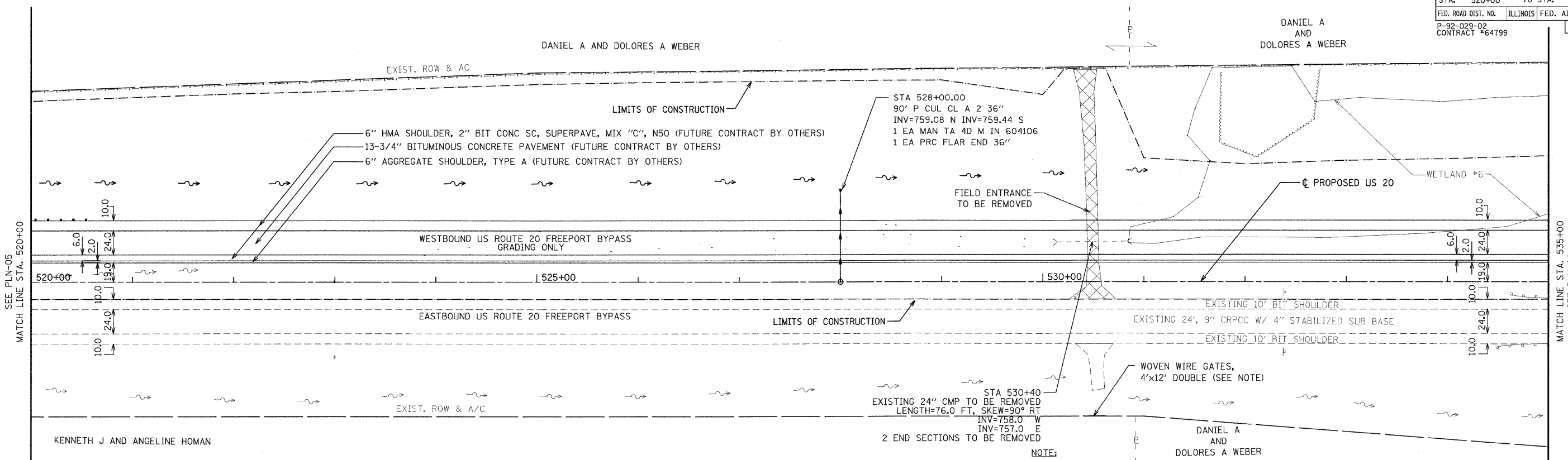
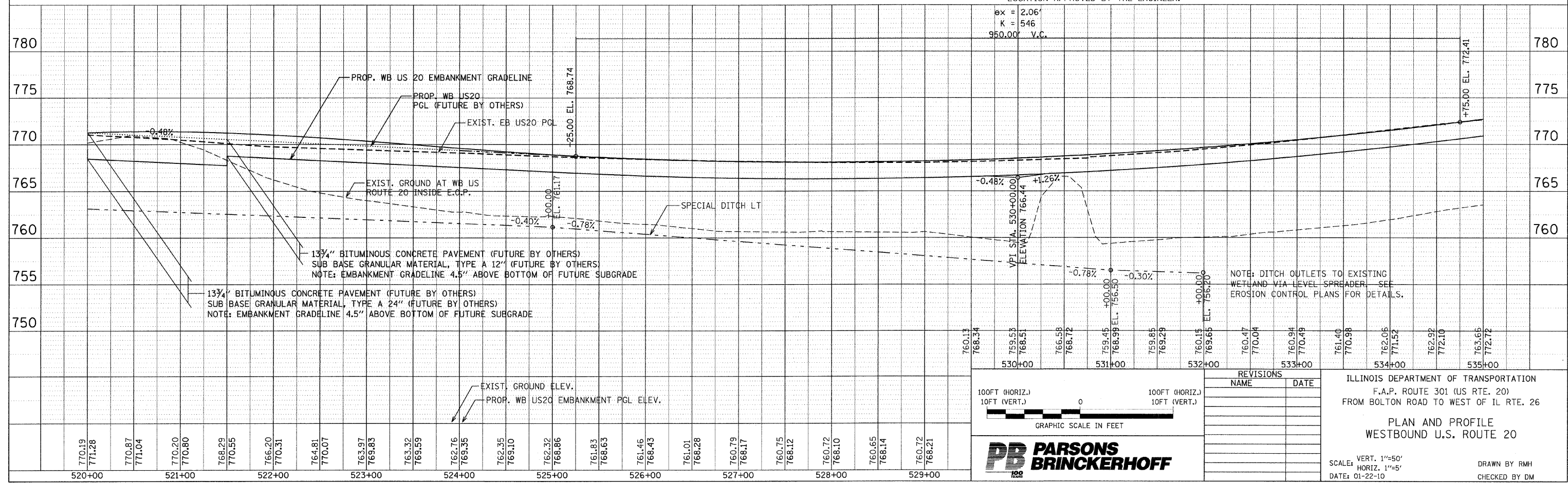


F.A. RTE.	SECTION	COUNTY	TOTAL SHEETS	SHEET NO.
301	177-2 (-1A, B-1, VB-1)	STEPHENSON	386	56
STA.	520+00	TO STA.	535+00	
FED. ROAD DIST. NO.	ILLINOIS FED. AID PROJECT			
P-92-029-02	CONTRACT #64799		PLN-07 OF 32	



NOTE:  
 THE WOVEN WIRE GATES TO CONTROL ACCESS TO THE PROPOSED WETLAND SHALL BE INSTALLED AT A LOCATION APPROVED BY THE ENGINEER.  
 PROPOSED WETLAND AREA LOCATED SOUTH OF US20 SEE SHEETS 82-83.



100FT (HORIZ.)  
 10FT (VERT.)

GRAPHIC SCALE IN FEET

**PARSONS BRINCKERHOFF**

REVISIONS	
NAME	DATE

ILLINOIS DEPARTMENT OF TRANSPORTATION  
 F.A.P. ROUTE 301 (US RTE. 20)  
 FROM BOLTON ROAD TO WEST OF IL RTE. 26

**PLAN AND PROFILE  
 WESTBOUND U.S. ROUTE 20**

SCALE: VERT. 1"=50'  
 HORIZ. 1"=50'  
 DATE: 01-22-10

DRAWN BY RMH  
 CHECKED BY DM