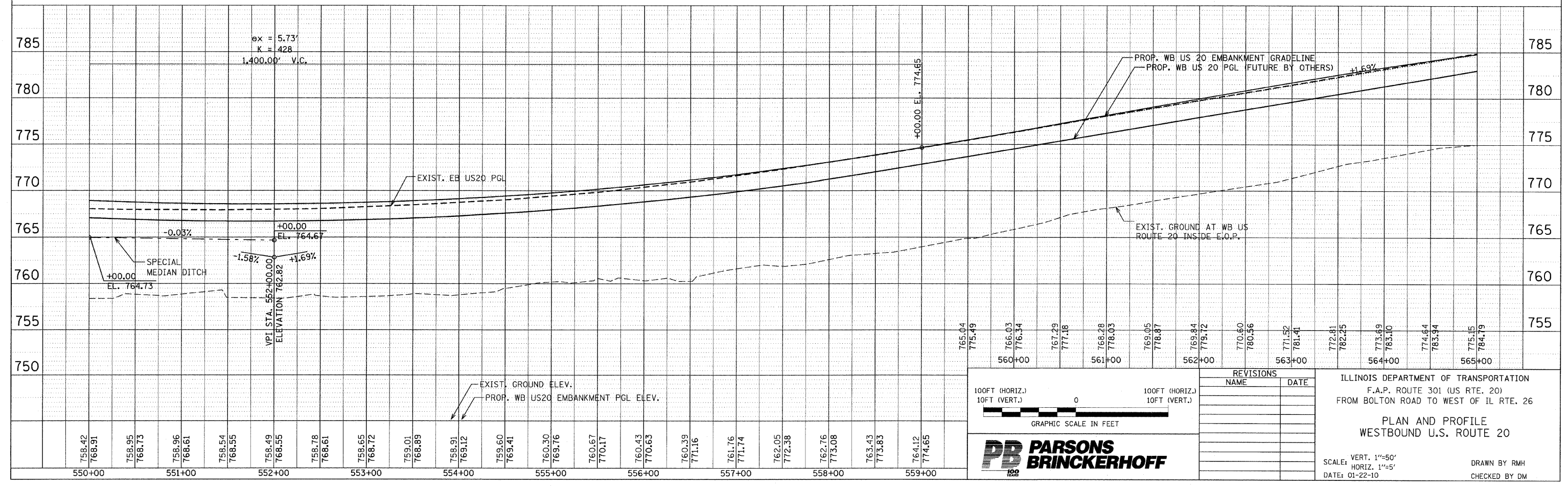
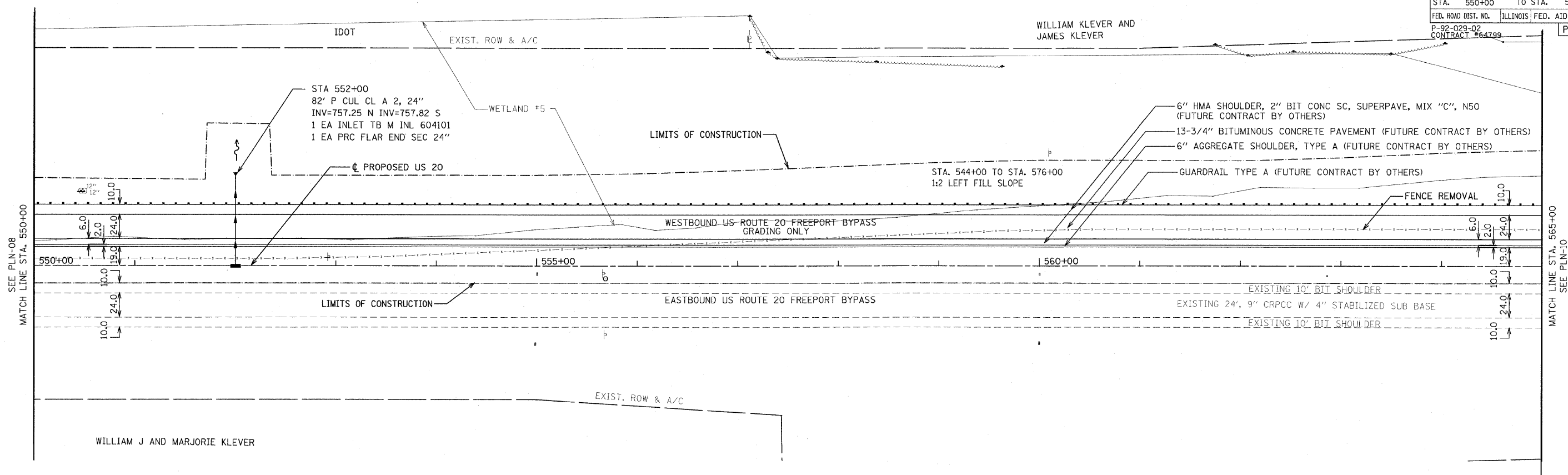


F.A. RTE.	SECTION	COUNTY	TOTAL SHEETS	SHEET NO.
301	177-2 (-1A, B-1, VB-1)	STEPHENSON	386	58
STA.	550+00	TO STA.	565+00	
FED. ROAD DIST. NO.	ILLINOIS FED. AID PROJECT			
P-92-029-02	CONTRACT #64799			PLN-09 OF 32



100FT (HORIZ.)
10FT (VERT.)

GRAPHIC SCALE IN FEET

REVISIONS	
NAME	DATE

ILLINOIS DEPARTMENT OF TRANSPORTATION
F.A.P. ROUTE 301 (US RTE. 20)
FROM BOLTON ROAD TO WEST OF IL RTE. 26

**PLAN AND PROFILE
WESTBOUND U.S. ROUTE 20**

SCALE: VERT. 1"=50'
HORIZ. 1"=50'
DATE: 01-22-10

DRAWN BY RMH
CHECKED BY DM

PARSONS BRINCKERHOFF