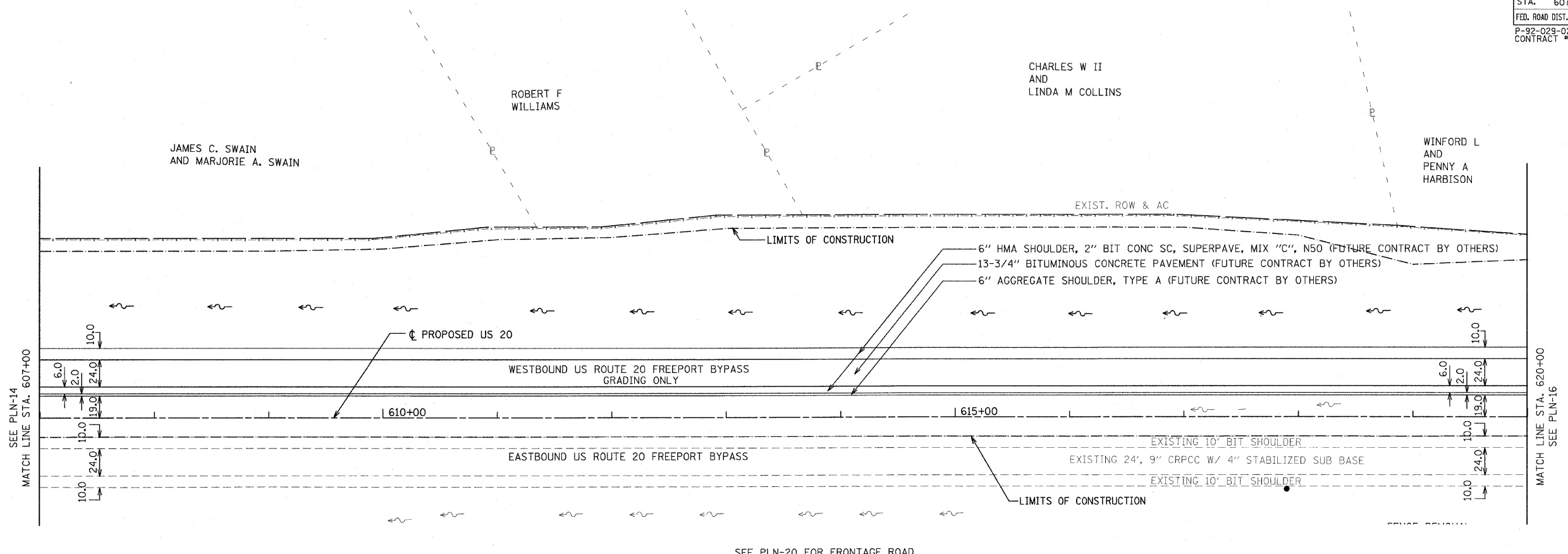
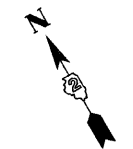
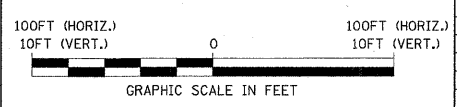
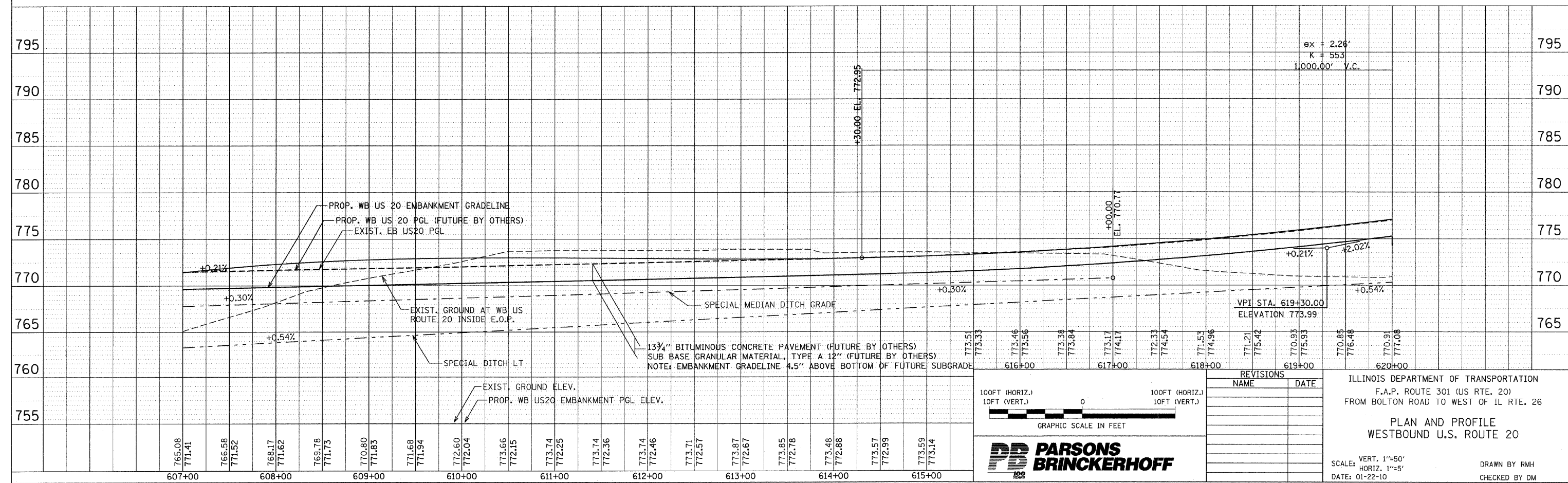


F.A. RTE.	SECTION	COUNTY	TOTAL SHEETS	SHEET NO.
301	177-2 (-1A, B-1, VB-1)	STEPHENSON	386	64
STA.	607+00	TO STA.	620+00	
FED. ROAD DIST. NO.	ILLINOIS	FED. AID PROJECT		
P-92-029-02				PLN-15 OF 32
CONTRACT #64799				



SEE PLN-20 FOR FRONTAGE ROAD



REVISIONS	
NAME	DATE

ILLINOIS DEPARTMENT OF TRANSPORTATION
 F.A.P. ROUTE 301 (US RTE. 20)
 FROM BOLTON ROAD TO WEST OF IL RTE. 26

PLAN AND PROFILE
 WESTBOUND U.S. ROUTE 20

SCALE: VERT. 1"=50'
 HORIZ. 1"=50'
 DATE: 01-22-10

DRAWN BY RMH
 CHECKED BY DM