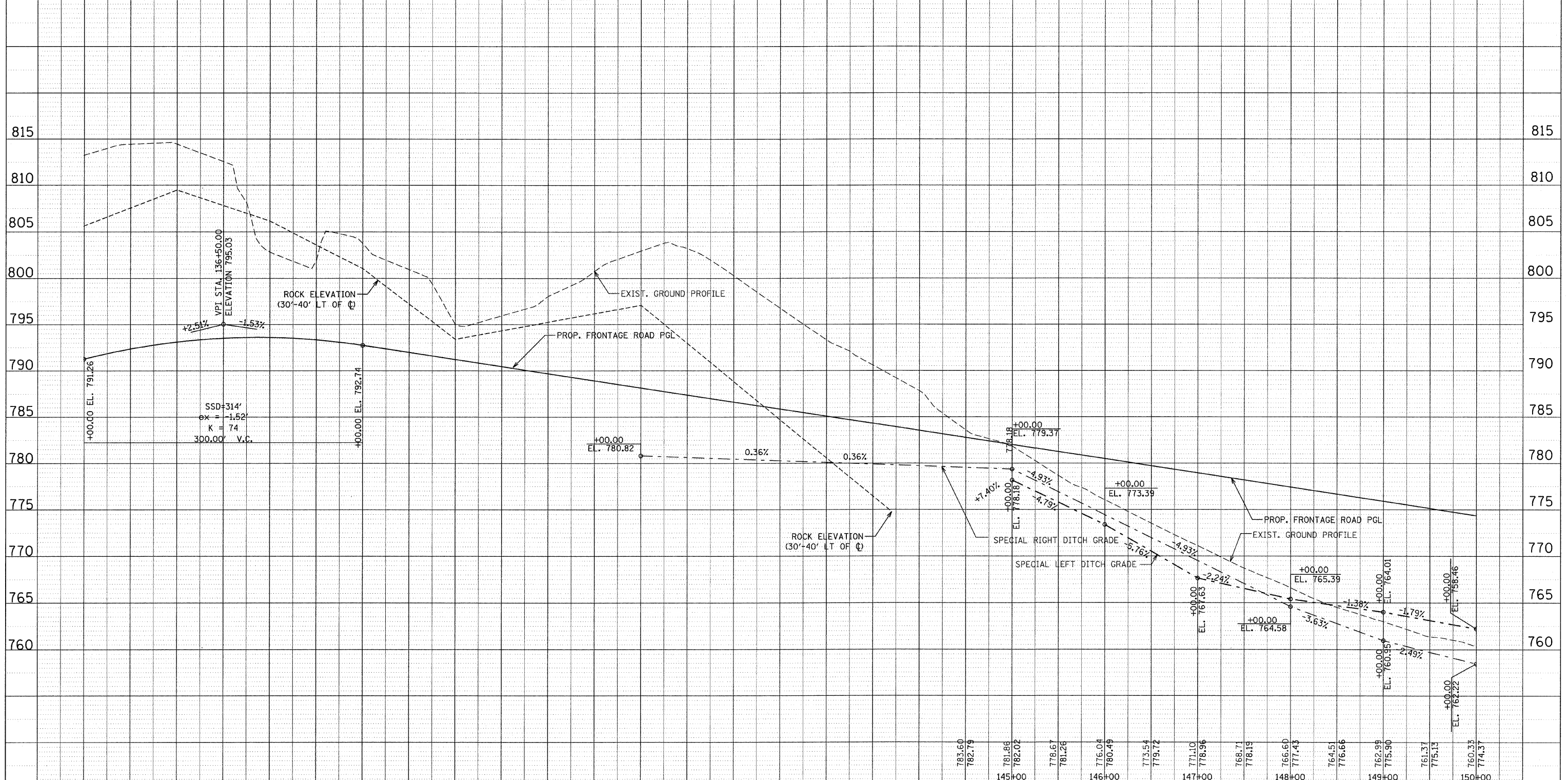


F.A. RTE.	SECTION	COUNTY	TOTAL SHEETS	SHEET NO.
301	177-2 (-1A, B-1, VB-1)	STEPHENSON	386	73
STA.	TO STA.			
135+00	150+00			
FED. ROAD DIST. NO.	ILLINOIS FED. AID PROJECT			
P-92-029-02			PLN-24 OF 32	
CONTRACT #64799				



813.24 791.26	814.44 792.35	814.45 793.10	812.56 793.52	802.85 793.59	801.90 793.33	803.77 792.74	800.94 791.97	795.02 791.21	795.93 790.44	798.06 789.67	800.74 788.91	802.96 788.14	803.22 787.38	800.28 786.61	796.75 785.85	793.31 785.08	790.56 784.32	787.82 783.55	
135+00	136+00	137+00	138+00	139+00	140+00	141+00	142+00	143+00	144+00										

100FT (HORIZ.)  
10FT (VERT.)

GRAPHIC SCALE IN FEET

REVISIONS NAME	DATE

ILLINOIS DEPARTMENT OF TRANSPORTATION  
F.A.P. ROUTE 301 (US RTE. 20)  
FROM BOLTON ROAD TO WEST OF IL RTE. 26

PROFILE  
FRONTAGE ROAD

SCALE: VERT. 1"=50'  
HORIZ. 1"=50'  
DATE: 01-22-10

DRAWN BY RMH  
CHECKED BY DM

