


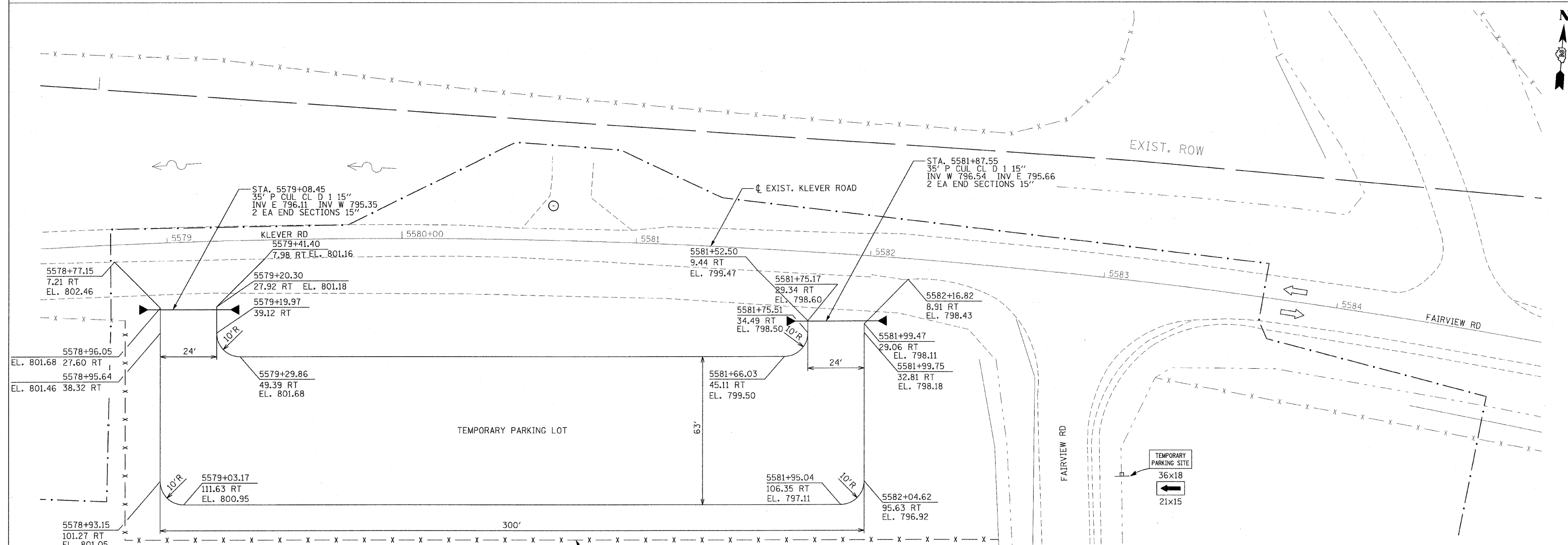
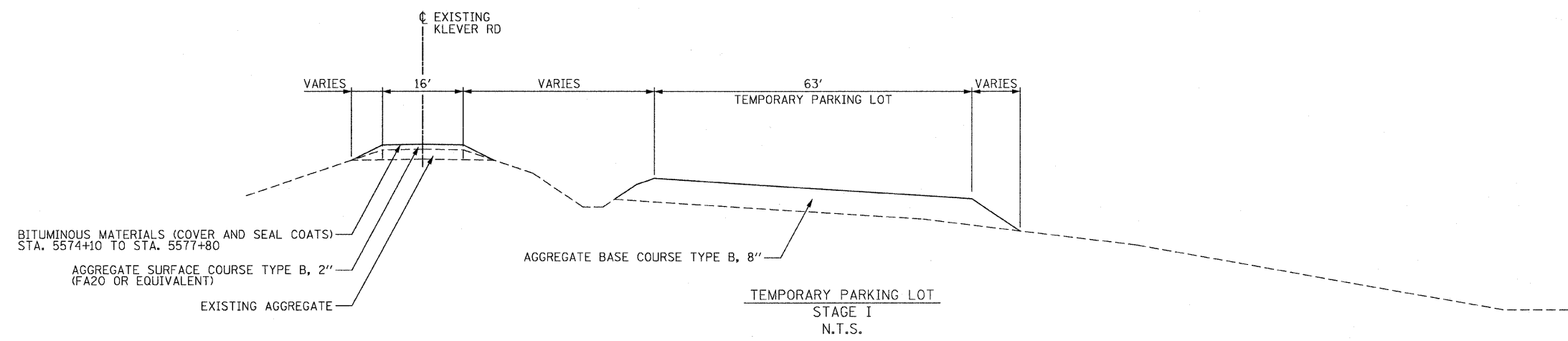


F.A.P. RTE.	SECTION	COUNTY	TOTAL SHEETS	SHEET NO.
301	177-2 (-1A, B-1, VB-1)	STEPHENSON	386	81
STA. 8+00		TO STA. 22+77.35		
FED. ROAD DIST. NO.	ILLINOIS	FED. AID PROJECT		
P-92-029-02			PLN-32 OF 32	
CONTRACT #64799				

LEGEND

-  DRUM WITH STEADY BURNING MONO DIRECTION LIGHT AT 50' C-C
-  WORK ZONE
-  DIRECTION OF TRAFFIC



- NOTES:
- TEMPORARY FENCE SHALL BE INSTALLED TO SEPARATE EXISTING US 20 AND THE TEMPORARY PARKING LOT.
  - PORTABLE TOILET LOCATION SHALL BE APPROVED OF BY THE ENGINEER. THE PORTABLE TOILET IS NOT PAID FOR SEPARATELY, BUT WILL BE INCLUDED IN THE COST OF ENGINEER'S FIELD OFFICE, TYPE A.
  - THE CONTRACTOR SHALL INSTALL THE APPROPRIATE EROSION CONTROL FEATURES RELATED TO THE TEMPORARY PARKING LOT AND KLEVER ROAD RESURFACING. THIS WORK, INCLUDING SILT FENCE INSTALLATION, TEMPORARY SEEDING AND OTHER TEMPORARY EROSION CONTROL FEATURES SHALL BE INCLUDED IN THE COST OF EARTH EXCAVATION.

REVISIONS	
NAME	DATE

ILLINOIS DEPARTMENT OF TRANSPORTATION  
 F.A.P. ROUTE 301 (US RTE. 20)  
 FROM BOLTON ROAD TO WEST OF IL RTE. 26

PLAN  
 BIKE PATH TEMPORARY PARKING LOT

SCALE: 1"=20'  
 DATE: 01-22-10

DRAWN BY TJR  
 CHECKED BY RMH

