


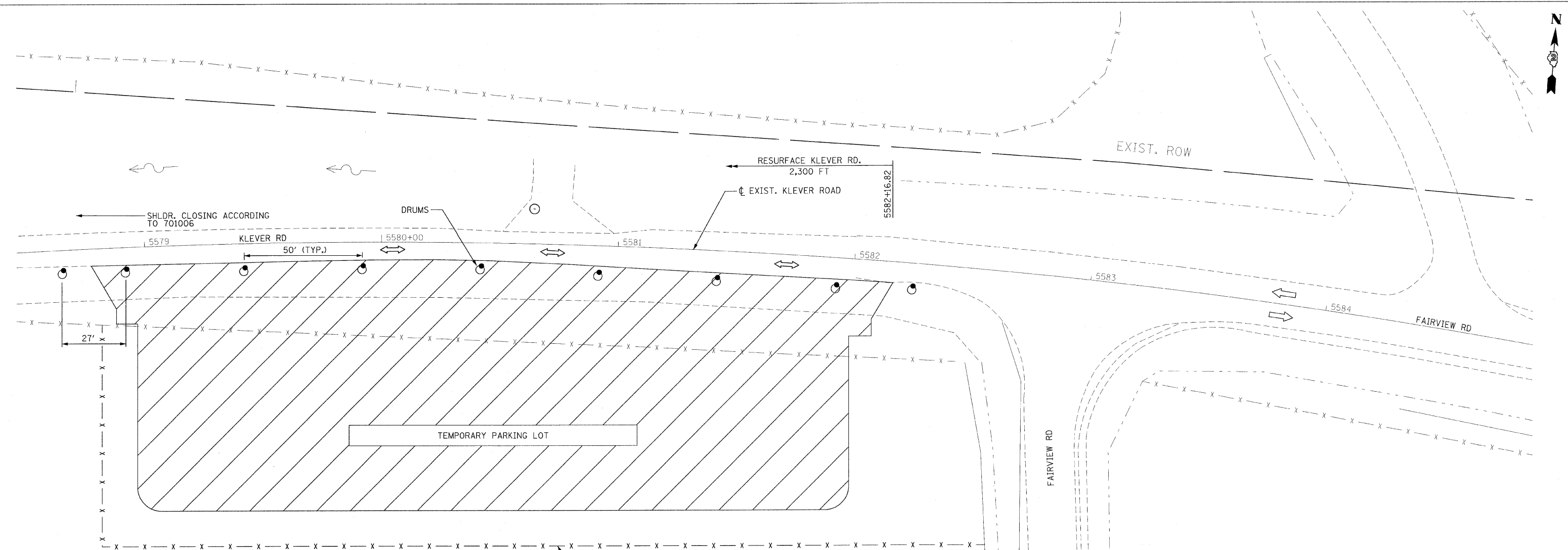


LEGEND

-  DRUM WITH STEADY BURNING MONO DIRECTION LIGHT
-  WORK ZONE
-  DIRECTION OF TRAFFIC

TEMPORARY PARKING LOT
STAGE IA
N.T.S.



STAGE IA NOTES (KLEVER ROAD)

1. INSTALL TRAFFIC CONTROL DEVICES AS SHOWN ON PLANS AND STANDARDS.
2. GRADE AND CONSTRUCT TEMPORARY PARKING LOT. TRAFFIC CONTROL AND STAGING SHALL BE PAID FOR AT THE CONTRACT UNIT PRICE PER LUMP SUM AS TRAFFIC CONTROL AND PROTECTION STANDARD 701326.
3. RESURFACE KLEVER ROAD (2,300 FT). TRAFFIC CONTROL AND STAGING SHALL BE PAID FOR AT THE CONTRACT UNIT PRICE PER LUMP SUM AS TRAFFIC CONTROL AND PROTECTION STANDARD 701306.
4. ONE LANE SHALL REMAIN OPEN AT ALL TIMES ON KLEVER ROAD.
5. TRAFFIC CONTROL AND PROTECTION STANDARD 701006 SHALL BE APPLIED AS DEEMED NECESSARY BY THE ENGINEER.

STAGE IA

REVISIONS	
NAME	DATE

ILLINOIS DEPARTMENT OF TRANSPORTATION
F.A.P. ROUTE 301 (US RTE. 20)
FROM BOLTON ROAD TO WEST OF IL RTE. 26

SUGGESTED TRAFFIC CONTROL AND STAGING PLANS
TEMPORARY PARKING LOT DETAIL

SCALE: 1"=20'
DATE: 01-22-10

DRAWN BY TJR
CHECKED BY RMH

