

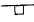


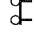

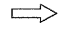
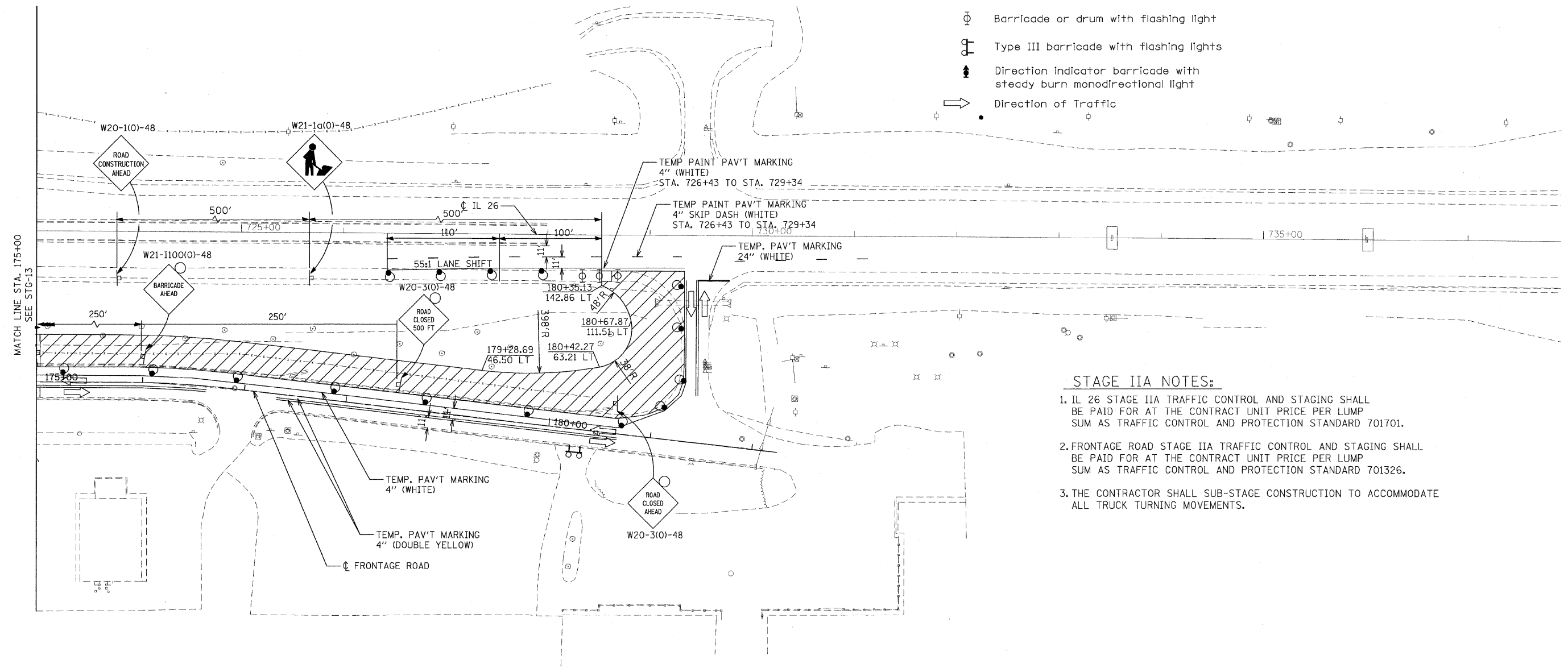


F.A.P. RTE.	SECTION	COUNTY	TOTAL SHEETS	SHEET NO.
301	177-2 (-1A, B-1, VB-1)	STEPHENSON	386	98
STA.		TO STA.		
FED. ROAD DIST. NO.	ILLINOIS	FED. AID PROJECT		
P-92-029-02		STG-13 OF 23		
CONTRACT #64799				

**LEGEND**

-  Work area
-  Drums with steady burning mono-directional lights at 50' C-C in tapers and 100' C-C in tangents
-  Sign on portable or permanent support
-  Flagger with traffic control sign
-  Barricade or drum with flashing light
-  Type III barricade with flashing lights
-  Direction indicator barricade with steady burn monodirectional light
-  Direction of Traffic



**STAGE IIA NOTES:**

1. IL 26 STAGE IIA TRAFFIC CONTROL AND STAGING SHALL BE PAID FOR AT THE CONTRACT UNIT PRICE PER LUMP SUM AS TRAFFIC CONTROL AND PROTECTION STANDARD 701701.
2. FRONTAGE ROAD STAGE IIA TRAFFIC CONTROL AND STAGING SHALL BE PAID FOR AT THE CONTRACT UNIT PRICE PER LUMP SUM AS TRAFFIC CONTROL AND PROTECTION STANDARD 701326.
3. THE CONTRACTOR SHALL SUB-STAGE CONSTRUCTION TO ACCOMMODATE ALL TRUCK TURNING MOVEMENTS.

**STAGE IIA**

REVISIONS	
NAME	DATE

ILLINOIS DEPARTMENT OF TRANSPORTATION  
 F.A.P. ROUTE 301 (US RTE. 20)  
 FROM BOLTON ROAD TO WEST OF IL RTE. 26

**SUGGESTED TRAFFIC CONTROL AND STAGING PLANS**  
 IL 26

SCALE: 1"=50'  
 DATE: 01-22-10

DRAWN BY SJV  
 CHECKED BY RMH



MATCH LINE STA. 175+00  
SEE STG-13