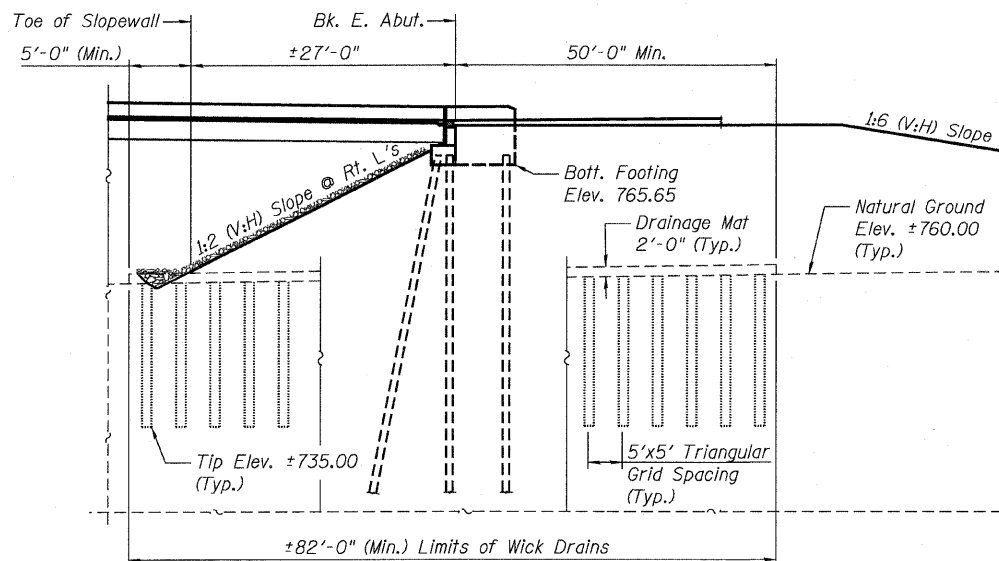
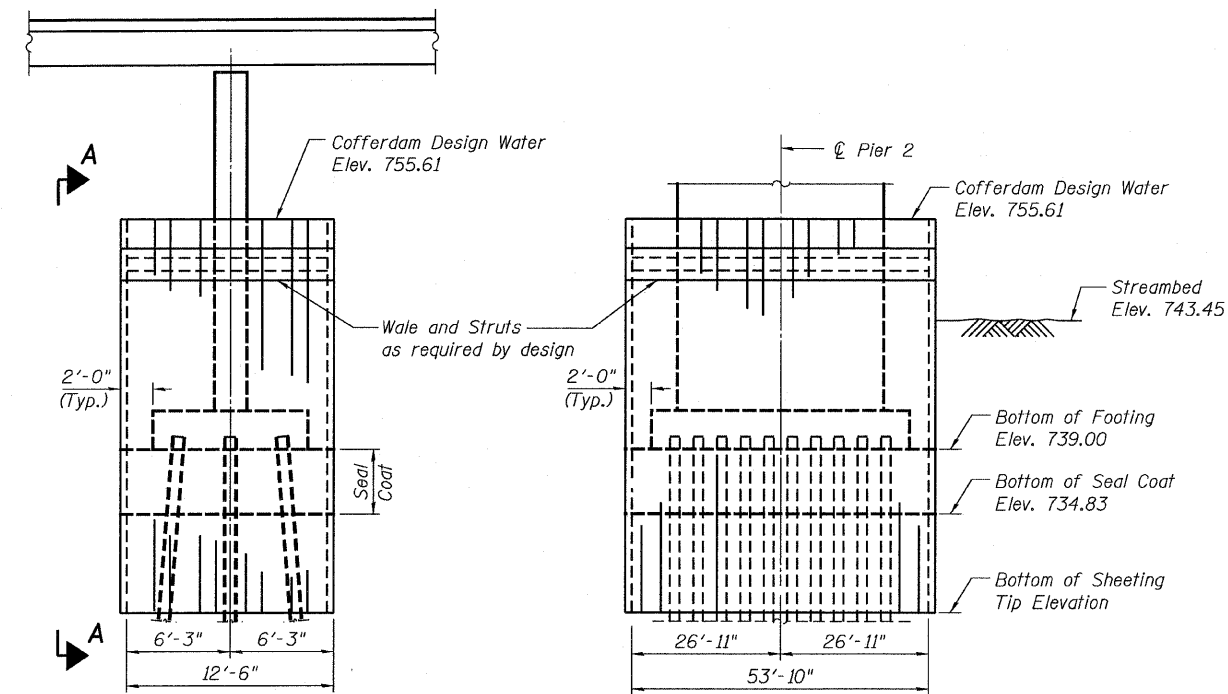
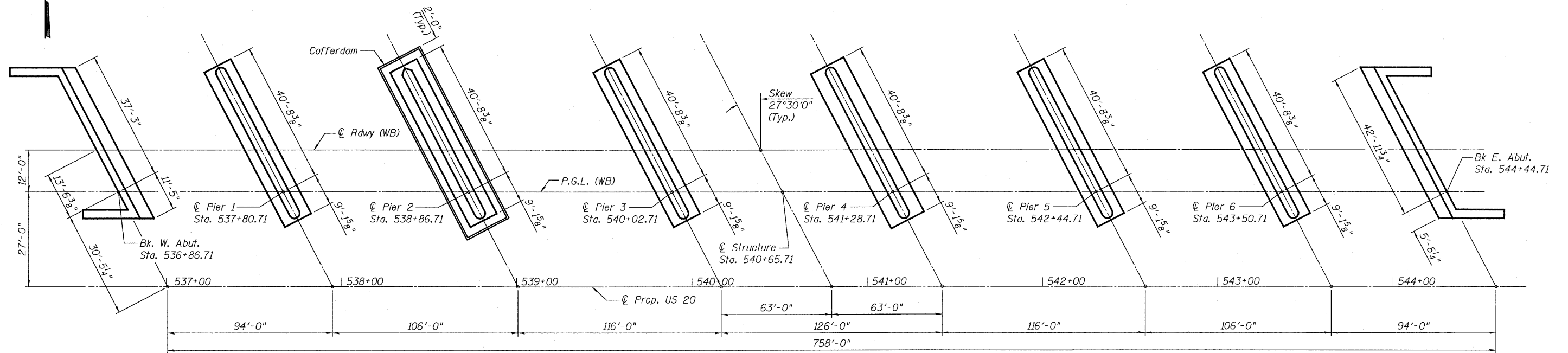


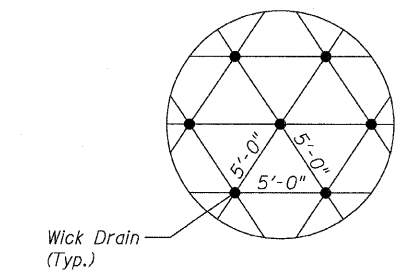
STATE OF ILLINOIS
DEPARTMENT OF TRANSPORTATION

ROUTE NO.	SECTION	COUNTY	TOTAL SHEETS	SHEET NO.
FAP 301	177-2	STEPHENSON	386	143
FED. ROAD DIST. NO. 7	ILLINOIS	FED. AID PROJECT-		

SHEET NO. 3
47 SHEETS
Contract No. 64799



- Notes:
1. Transverse limits of Wick Drain shall extend 5'-0" min. beyond the limits of the proposed embankment or as directed by the Engineer.
 2. Longitudinal limits of Wick Drains are shown in the "East Abutment Elevation" view.



- Notes:
1. The estimated tip elevation for the sheet piling used to construct the cofferdam at Pier 2 is not shown due to the opinion that a cantilevered design is not feasible and a Wale Restraint System will likely be required based on the soil conditions.
 2. The information shown for the cofferdam at Pier 2 is estimated. The Contractor is required to retain an Illinois Licensed Structural Engineer to design the cofferdam, cofferdam bracing, redesign the thickness of the seal coat, and all associated members. The plans and computations shall be submitted to the Bureau of Bridges and Structures for review and approval before any temporary construction work commences.
 3. The seal coat shall be Class SC Concrete tremied underwater after the foundation piles have been driven.

DESIGNED	S.CHELBIAN
CHECKED	A.HAMMAD
DRAWN	S.CHELBIAN
CHECKED	J.GRAINAWI

BILL OF MATERIAL

ITEM	UNIT	TOTAL
Cofferdam Excavation	Cu. Yd.	204
Cofferdams	Each	1
Wick Drains	Foot	8,000

WICK DRAIN DETAILS

FOOTING LAYOUT
F.A.P. ROUTE 301 SECTION 177-2B-1
STEPHENSON COUNTY
STATION 540+65.71
STRUCTURE NO. 089-0082

