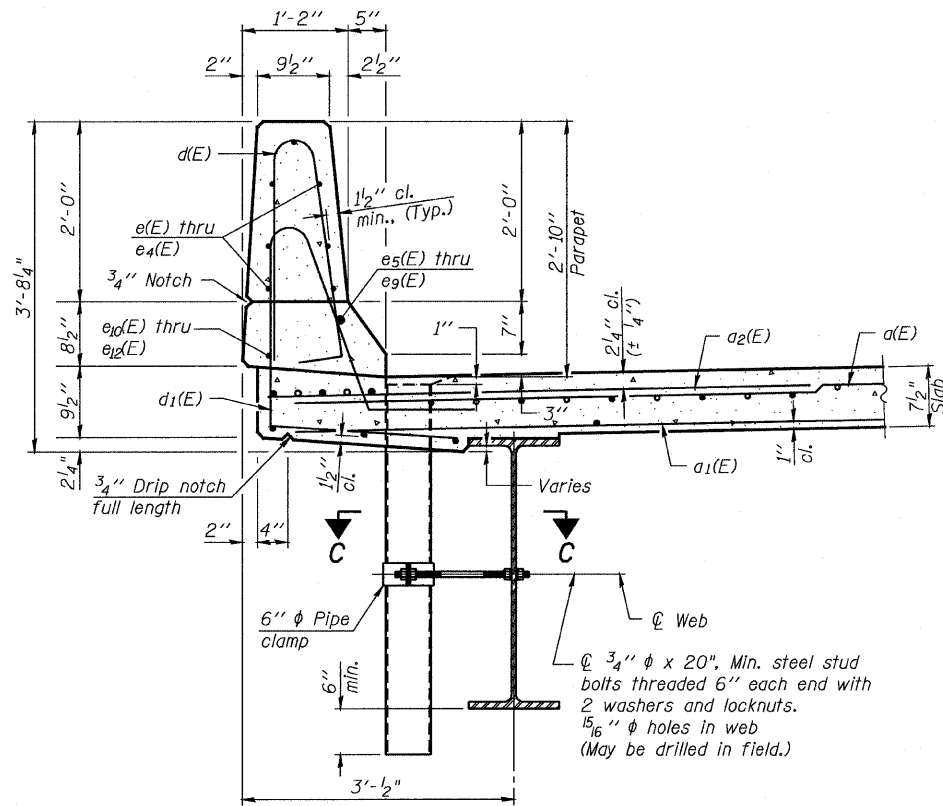


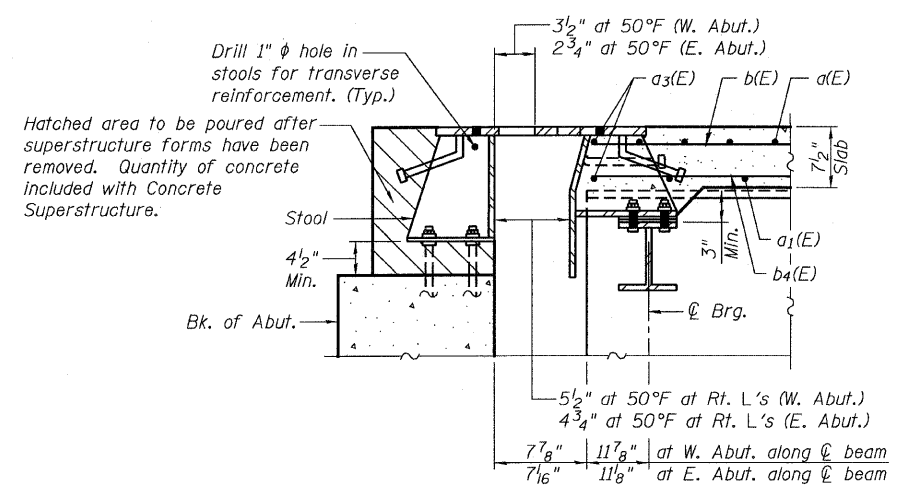
STATE OF ILLINOIS  
DEPARTMENT OF TRANSPORTATION

ROUTE NO.	SECTION	COUNTY	TOTAL SHEETS	SHEET NO.	SHEET NO. 14
FAP 301	177-2	STEPHENSON	386	154	47 SHEETS
FED. ROAD DIST. NO. 7	ILLINOIS	FED. AID PROJECT-			

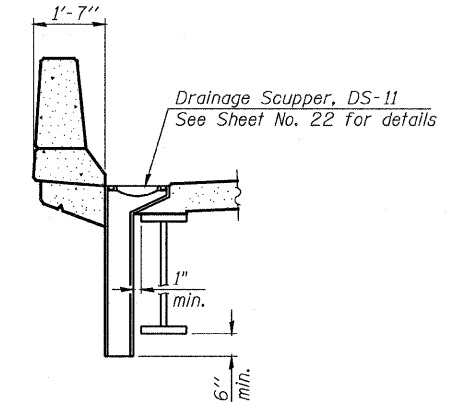
Contract No. 64799



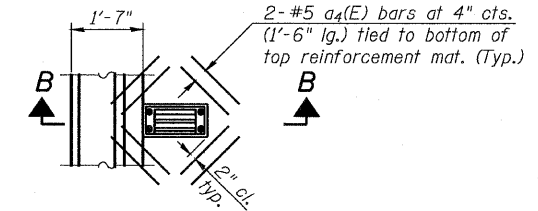
**SECTION THRU PARAPET**  
(6"  $\phi$  Floor Drain in Spans 3 Thru 5 Only)



**SECTION A-A**

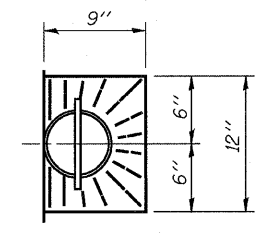


**SECTION B-B**

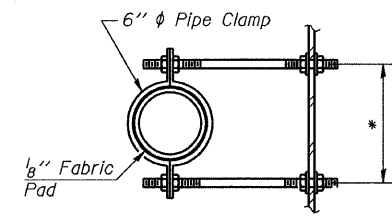


**DETAIL A**

Note:  
Cut longitudinal reinforcement to clear drainage scuppers.

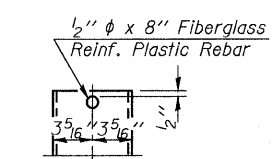


**DETAIL B**

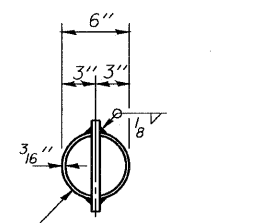


**SECTION C-C**

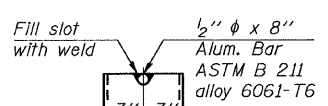
\* Dimension as required by Pipe Clamp



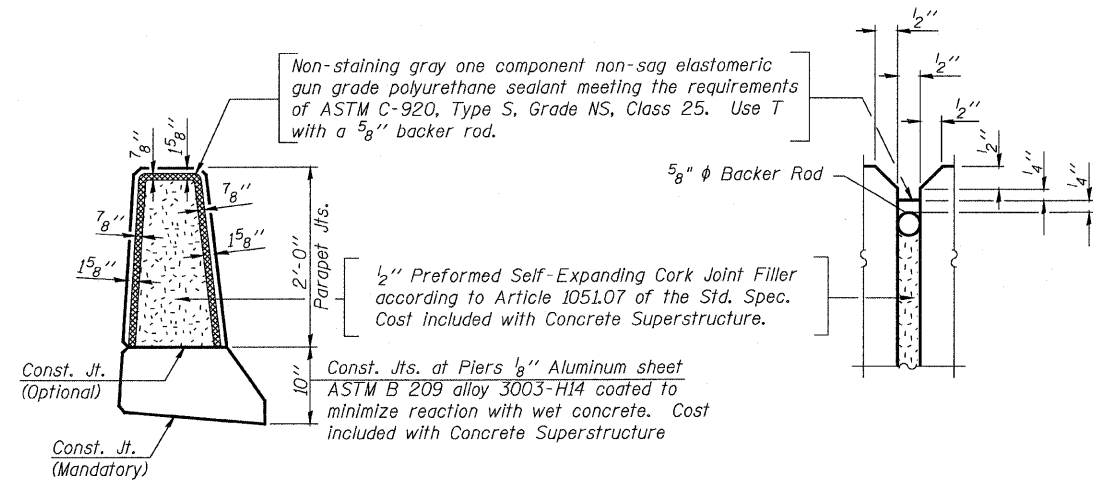
**FIBERGLASS PIPE**



**TOP PLAN**  
(Showing Aluminum Tube)



**ALUMINUM TUBE**



**PARAPET JOINT DETAILS**

Notes:

1. Drains shall be located clear of all diaphragms.
2. The exterior surfaces of the floor drains shall be painted with the finish coat as specified in the special provisions for Cleaning and Painting New Metal Structures. The exterior surfaces of the drains shall be cleaned according to Society of Protective Coatings' Spec. SSPC-SP1 prior to painting.
3. Fiberglass pipe shall conform to ASTM D 2996, with short-time rupture strength hoop tensile stress of 30,000 p.s.i. minimum.
4. Galvanize clamping device according to AASHTO M232. Cost of clamping device and inserts is included with Floor Drains.

DESIGNED	S.CHELBIAN
CHECKED	J.BRISBOIS
DRAWN	S.CHELBIAN
CHECKED	J.GRAINAWI



**SUPERSTRUCTURE DETAILS I**  
**F.A.P. ROUTE 301 SECTION 177-2B-1**  
**STEPHENSON COUNTY**  
**STATION 540+65.71**  
**STRUCTURE NO. 089-0082**