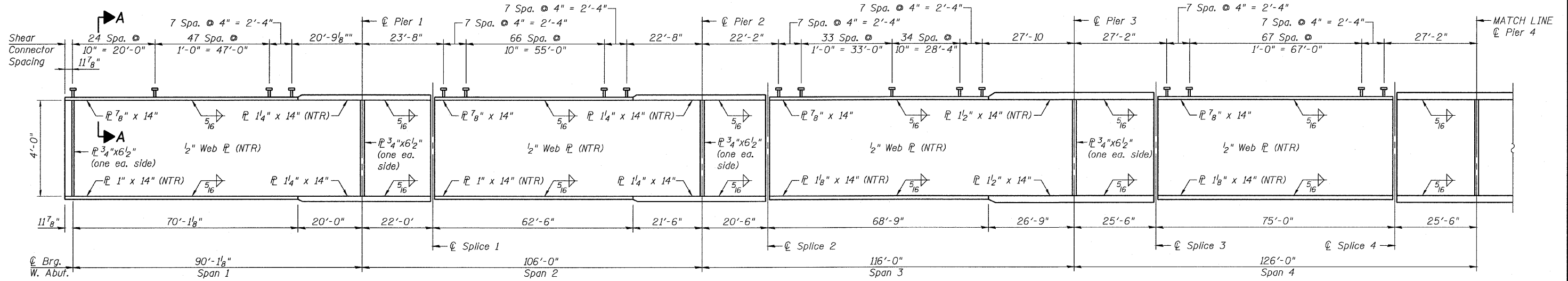


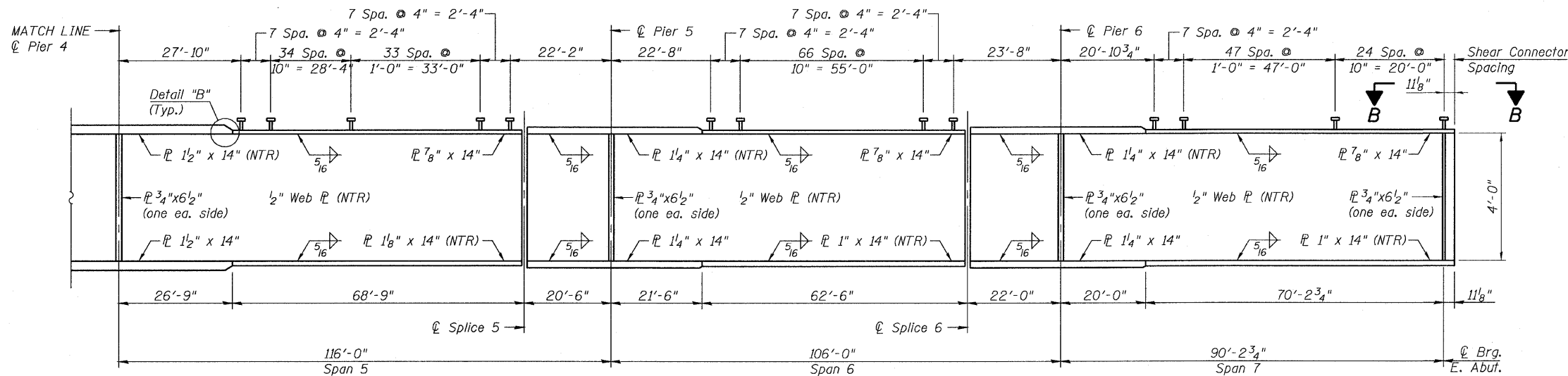
STATE OF ILLINOIS  
DEPARTMENT OF TRANSPORTATION

ROUTE NO.	SECTION	COUNTY	TOTAL SHEETS	SHEET NO.
FAP 301	177-2	STEPHENSON	386	164
FED. ROAD DIST. NO. 7	ILLINOIS	FED. AID PROJECT-		

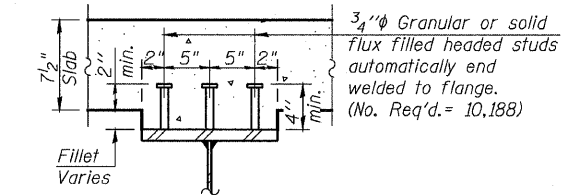
Contract No. 64799



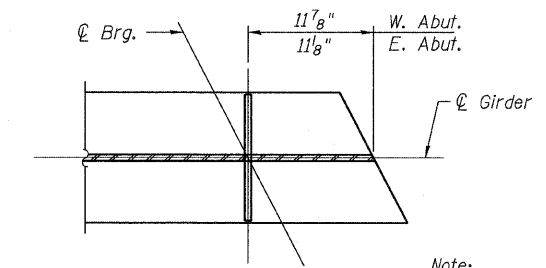
**GIRDER ELEVATION**  
(Spans 1 thru 4)



**GIRDER ELEVATION**  
(Spans 5 thru 7)



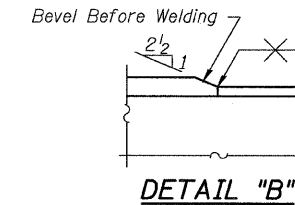
**SECTION A-A**



**SECTION B-B**

**TOP OF WEB ELEVATIONS**

	Girder 1	Girder 2	Girder 3	Girder 4	Girder 5	Girder 6
⊙ Brg. W. Abut.	774.287	774.378	774.445	774.334	774.164	773.961
⊙ Brg. Pier 1	775.206	775.308	775.386	775.285	775.124	774.930
⊙ Splice 1	775.424	775.529	775.610	775.512	775.354	775.163
⊙ Brg. Pier 2	776.020	776.137	776.229	776.143	775.997	775.817
⊙ Splice 2	776.165	776.285	776.380	776.297	776.153	775.977
⊙ Brg. Pier 3	776.454	776.587	776.695	776.625	776.495	776.331
⊙ Splice 3	776.527	776.664	776.775	776.709	776.582	776.422
⊙ Splice 4	776.489	776.635	776.757	776.701	776.584	776.434
⊙ Brg. Pier 4	776.389	776.539	776.665	776.612	776.499	776.352
⊙ Splice 5	776.002	776.165	776.303	776.263	776.163	776.030
⊙ Brg. Pier 5	775.835	776.001	776.142	776.105	776.008	775.878
⊙ Splice 6	775.152	775.329	775.482	775.456	775.371	775.252
⊙ Brg. Pier 6	774.911	775.092	775.248	775.225	775.143	775.027
⊙ Brg. E. Abut.	773.897	774.089	774.258	774.247	774.177	774.074



Notes:

1. Load carry components designated "NTR" shall conform to the Supplemental Requirements for Notch Toughness, Zone 2.
2. All structural steel shall be AASHTO M270, Gr. 50W.

Note:  
The end of the plate girders shall be cut parallel to skew.

DESIGNED	A.HAMMAD
CHECKED	J.BRISBOIS
DRAWN	D.C.PATEL
CHECKED	J.GRAINAWI

**FRAMING DETAILS I**  
**F.A.P. ROUTE 301 SECTION 177-2B-1**  
**STEPHENSON COUNTY**  
**STATION 540+65.71**  
**STRUCTURE NO. 089-0082**

