

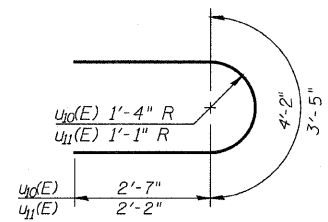
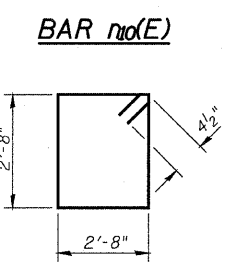
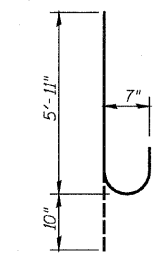
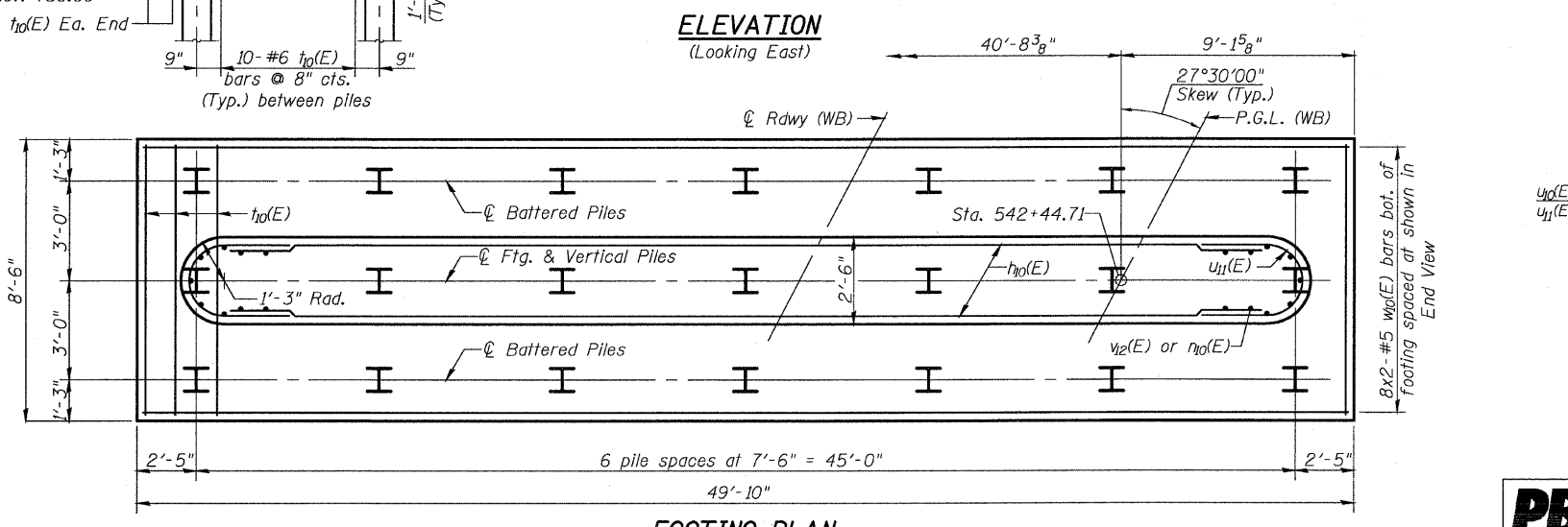
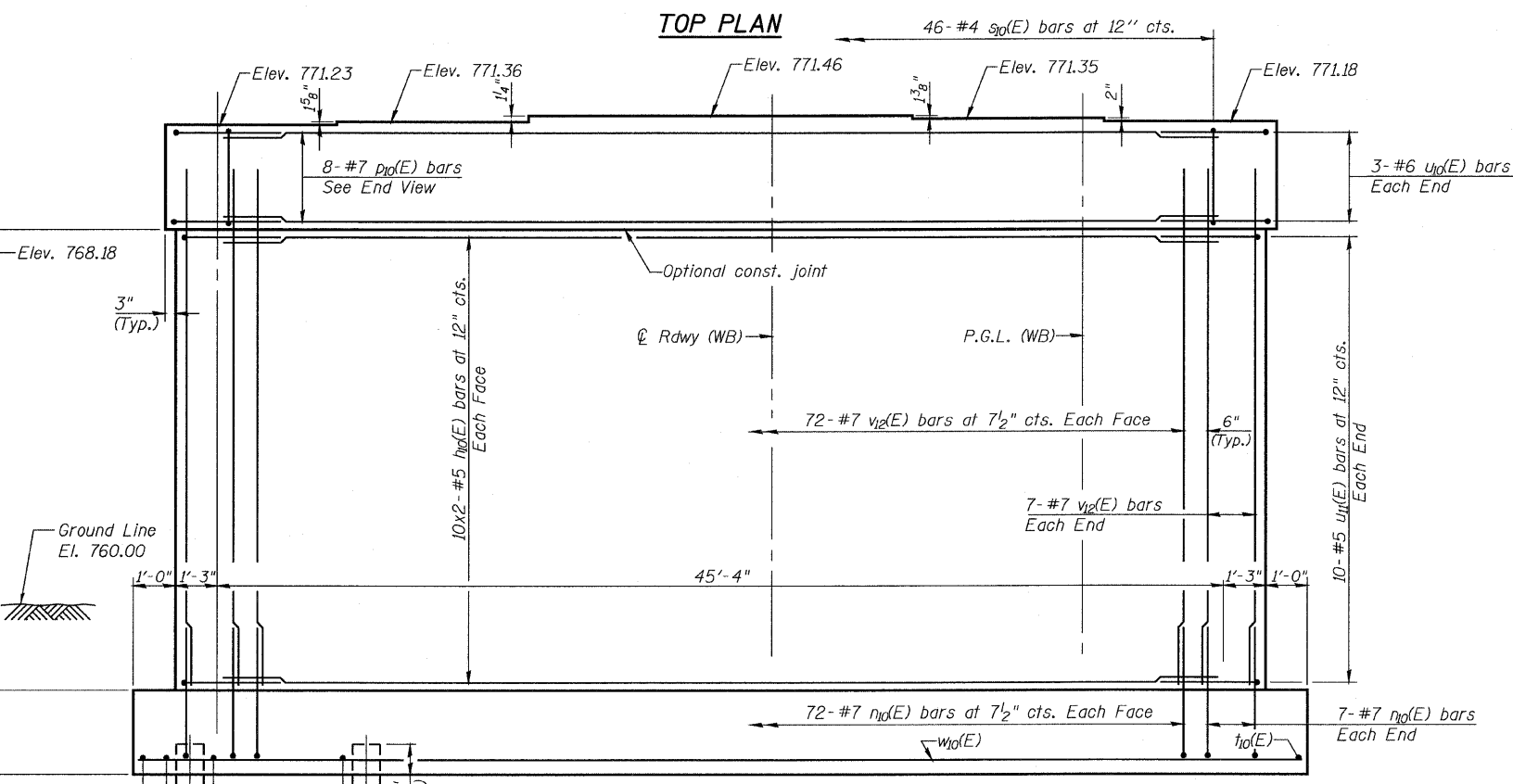
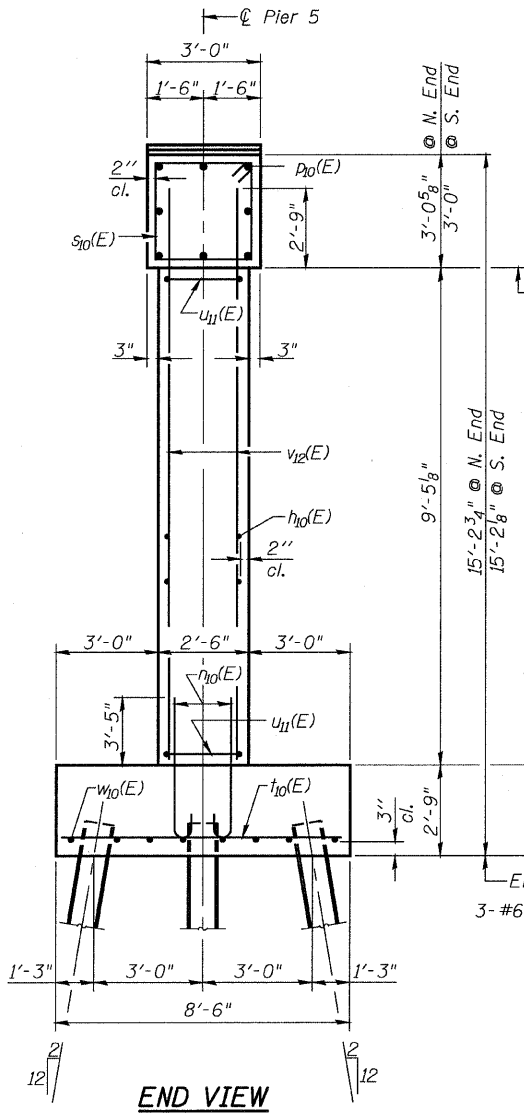
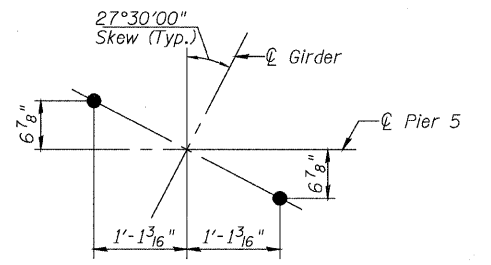
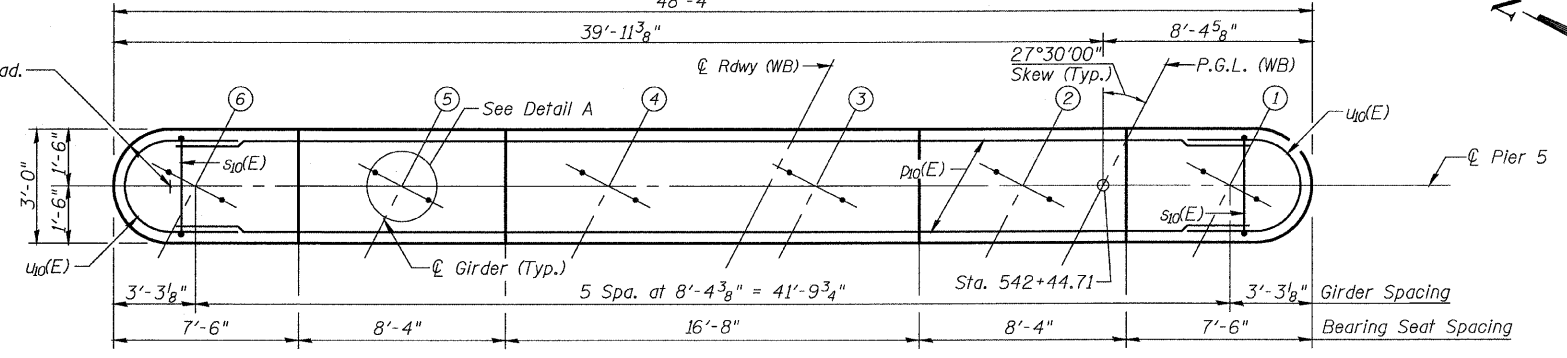
STATE OF ILLINOIS  
DEPARTMENT OF TRANSPORTATION

ROUTE NO.	SECTION	COUNTY	SHEET NO.	SHEET NO.
FAP 301	177-2	STEPHENSON	386	178
FED. ROAD DIST. NO. 7	ILLINOIS	FED. AID PROJECT-		

Contract No. 64799

47 SHEETS

- Notes:
- All exposed edges shall have standard  $\frac{3}{4}$ " Chamfers.
  - Space reinforcement in cap to miss anchor bolts.
  - Pour steps monolithically with cap.
  - If a portion of the pier wall or concrete encasement is under water, reinforcement may be placed underwater into forms. Concrete shall be tremied according to Article 503.08 of the Standard Specifications to an elevation of 1'-0" above the water line at the time of construction.
  - For details of piles, see Sheet No. 41.



BILL OF MATERIAL

Bar	No.	Size	Length	Shape
h10(E)	40	#5	23'-9"	—
n10(E)	158	#7	6'-9"	U
p10(E)	8	#7	45'-4"	—
s10(E)	46	#4	11'-5"	□
t10(E)	66	#6	8'-2"	—
u10(E)	6	#6	9'-4"	U
u11(E)	20	#5	7'-9"	U
v12(E)	158	#7	12'-2"	—
w10(E)	16	#5	26'-0"	—
Structure Excavation		Cu. Yd.	100	
Concrete Structures		Cu. Yd.	101.2	
Reinforcement Bars, Epoxy Coated		Pound	9,690	
Furnishing Steel Piles, HP 12x53		Foot	1,200	
Driving Piles		Foot	1,200	
Test Pile, HP 12x53		Each	1	
Pile Shoes		Each	20	

PILE DATA

Type: Steel HP 12x53 w/Pile Shoes  
Nominal Required Bearing: 419 kips  
Factored Resistance Available: 120 kips  
Est. Length: 60 Ft.  
No. Production Piles: 20  
No. Test Piles: 1

MINIMUM BAR LAP

- #5 bar = 2'-2"
- #6 bar = 2'-7"
- #7 bar = 3'-5"

PIER NO. 5

F.A.P. ROUTE 301 SECTION 177-2B-1  
STEPHENSON COUNTY  
STATION 540+65.71  
STRUCTURE NO. 089-0082



DESIGNED	S.CHELBIAN
CHECKED	R.TINGLEY
DRAWN	D.C.PATEL
CHECKED	J.GRAINAWI

T:\16814A\Struct\Cadd\Prefinal\US20 Bridge 089-0082 (Pecatonica River Bridge)\000000-64799-000-038.dgn 25-JAN-2010 13:48