

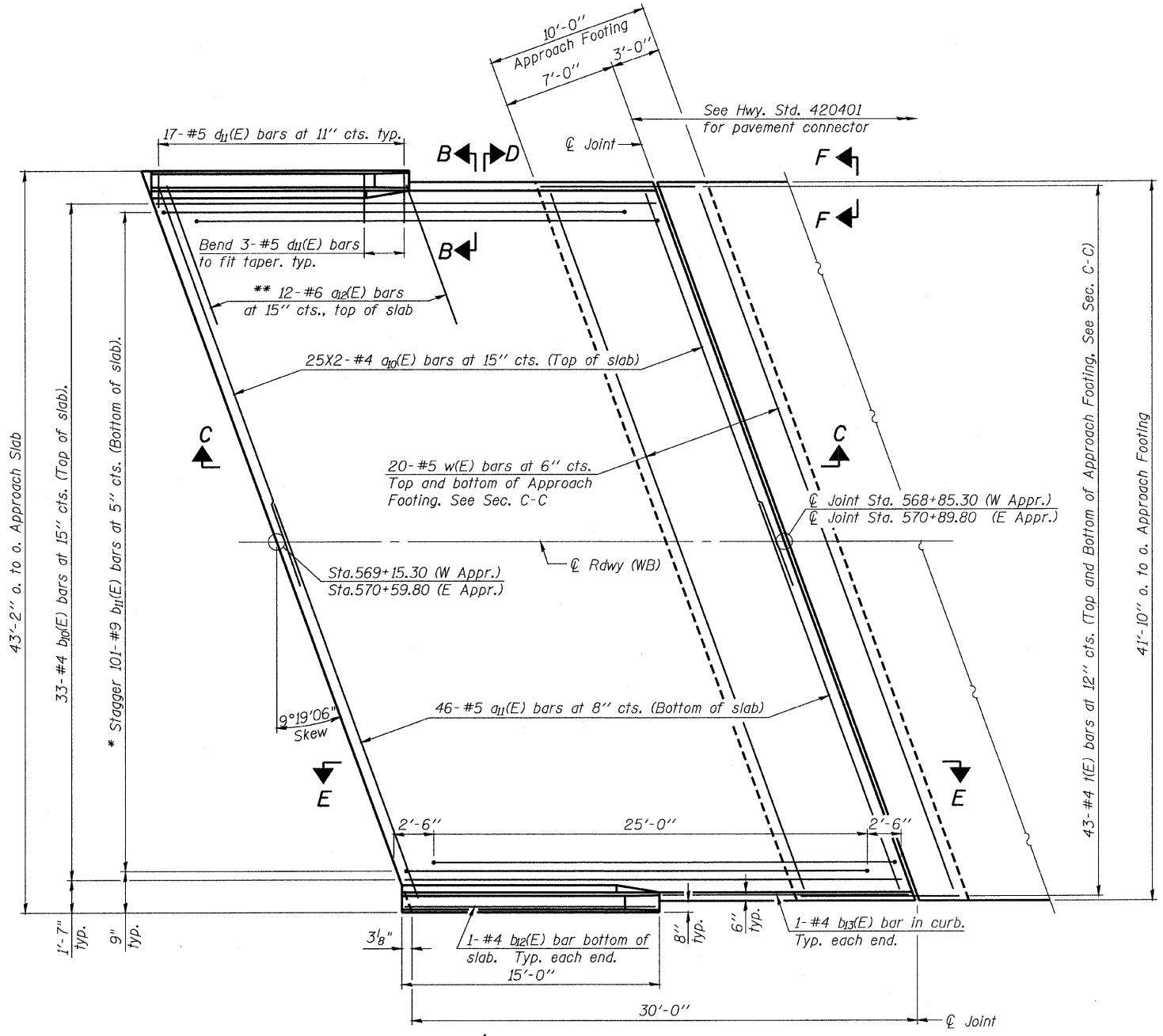
STATE OF ILLINOIS
DEPARTMENT OF TRANSPORTATION

ROUTE NO.	SECTION	COUNTY	STATE SHEETS	SHEET NO.	SHEET NO. 9
FAP 301	177-2	STEPHENSON	386	196	24 SHEETS
FED. ROAD DIST. NO. 7	ILLINOIS	FED. AID PROJECT-			

Contract No. 64799



Notes:
See sheet 10 of 24 for Sections C-C & D-D and View E-E.
 $a_{10}(E)$ and $a_{11}(E)$ bar spacings measured along C.Rdwy.
See sheet 1 of 24 for bridge approach pavement drain location and Standard 609006 for drain details. See roadway plans for quantities.
Bars thus indicate 25X2-#4 bars etc. indicates 25 lines of bars with 2 lengths per line.
Field cut reinforcement to clear approach pavement drains.



PLAN

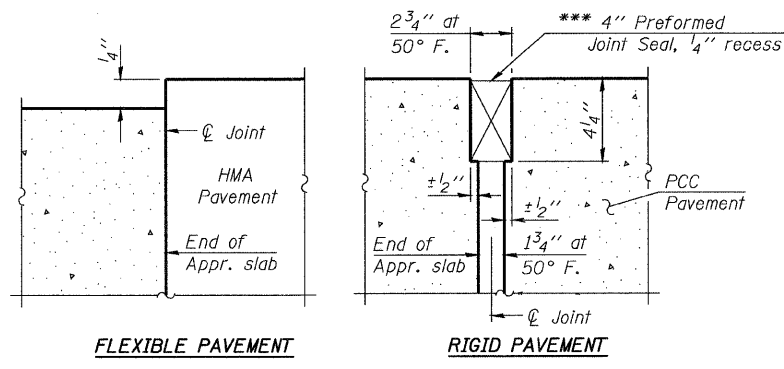
* Tilt #9 $b_{11}(E)$ bars as required to maintain clearance.
** Space between $a_{10}(E)$ bars, typ. each parapet.

MINIMUM BAR LAP
#4 Bars = 1'-8"

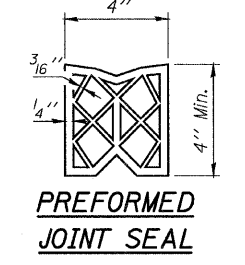
DESIGNED	H.ALKHAIB
CHECKED	S.CHELBIAN
DRAWN	D.C.PATEL
CHECKED	J.GRAINAWI

BA-R 11-1-09

*** Cost included with Concrete Superstructure.

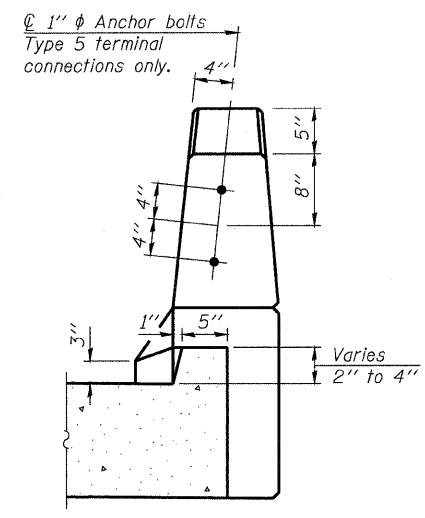


FLEXIBLE PAVEMENT RIGID PAVEMENT

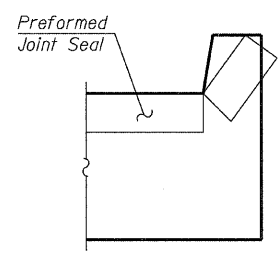


PREFORMED JOINT SEAL

DETAIL A



VIEW B-B



VIEW F-F

Angle Preformed Joint Seal at 45° to curbs when req'd for drainage.

**BRIDGE APPROACH SLAB
DETAILS I**
F.A.P. ROUTE 301 SECTION 177-2VB-1
STEPHENSON COUNTY
STATION 569+87.29
STRUCTURE NO. 089-0083



FOR INFORMATION ONLY

T:\16814A\Struct\Cad\Drawings\US20 Bridge 089-0083 (Jane Addams Trail Bridge)\000000-64799-000-000-008.dgn 25-JAN-2010 14:25