

STATE OF ILLINOIS  
DEPARTMENT OF TRANSPORTATION

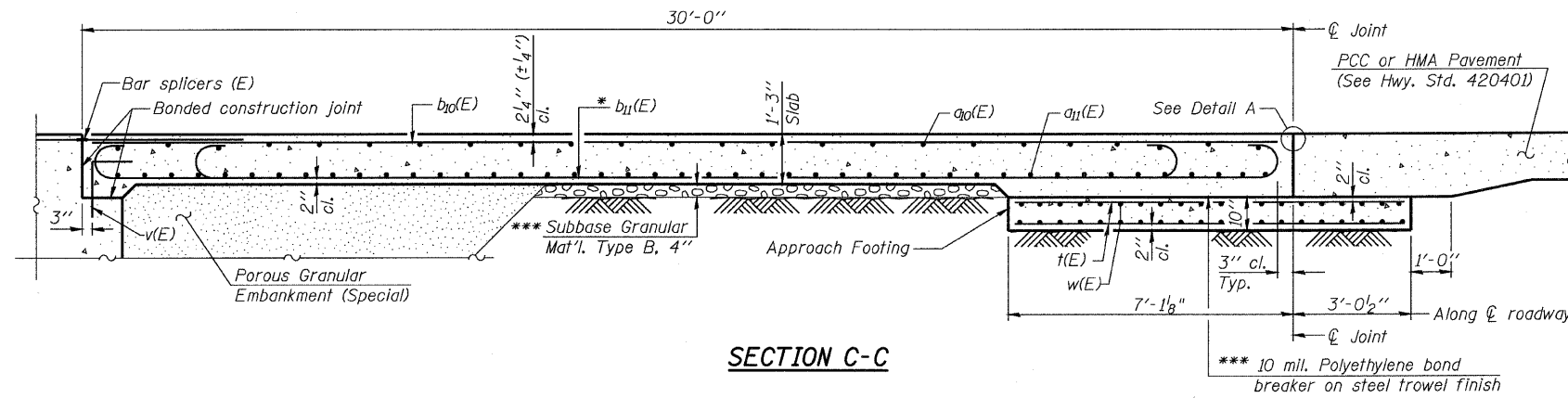
ROUTE NO.	SECTION	COUNTY	TOTAL SHEETS	SHEET NO.
FAP 301	177-2	STEPHENSON	386	197
FED. ROAD DIST. NO. 7	ILLINOIS	FED. AID PROJECT-		

SHEET NO. 10  
24 SHEETS

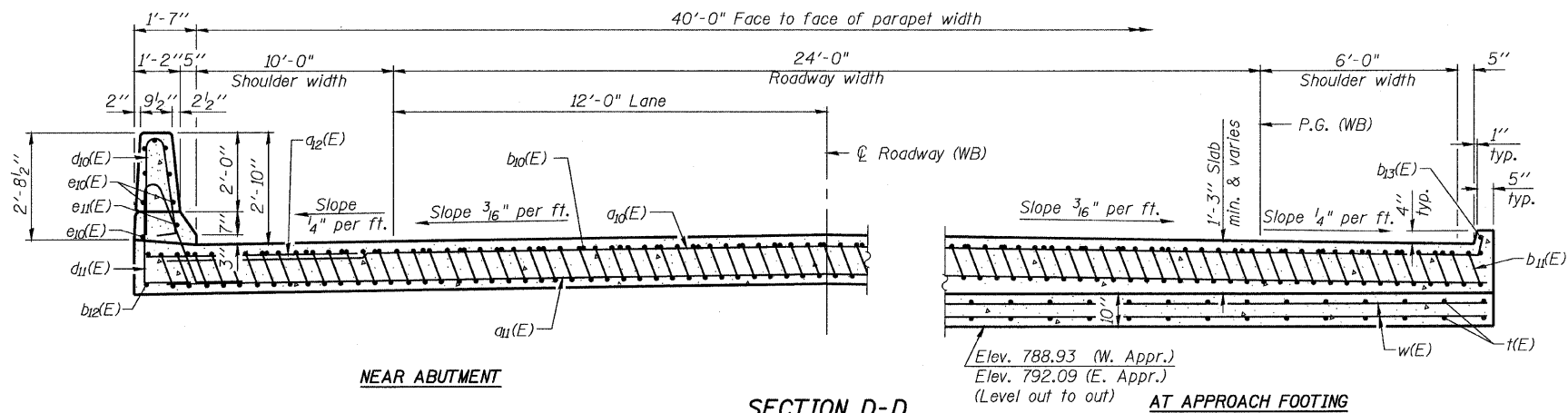
Contract No. 64799

Notes:

See sheet 9 of 24 for Detail A and View B-B.  
Approach slab and parapet concrete shall be paid for as Concrete Superstructure.  
Approach footing concrete shall be paid for as Concrete Structures.  
Reinforcement shall be paid for as Reinforcement Bars, Epoxy Coated.  
For v(E) bar details, see sheet 11 of 24.  
The approach footing maximum applied service bearing pressure (Qmax) = 2.0 ksf.  
For bar splicer details, see sheet 20 of 24.  
Cost of excavation for approach footing included with Concrete Structures.  
For Porous Granular Embankment (Special) and drainage treatment details, see sheet 2 of 24.

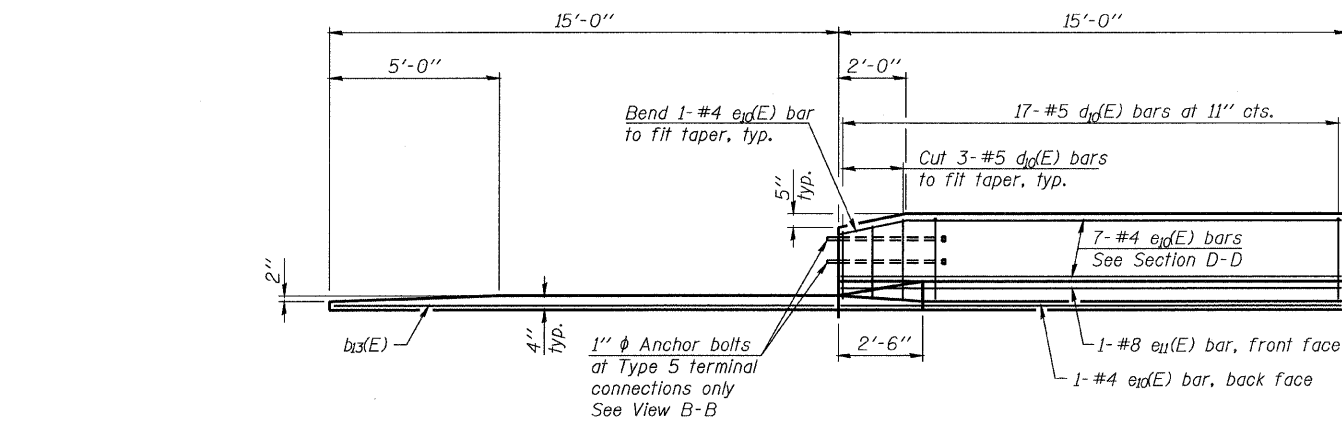


SECTION C-C

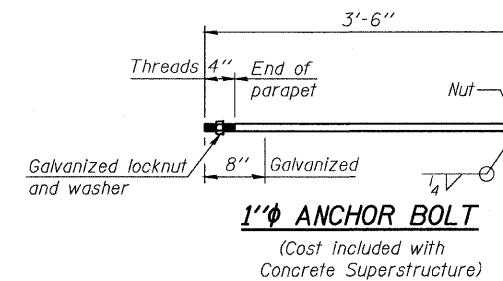


SECTION D-D

(See Plan for dimensions not shown)

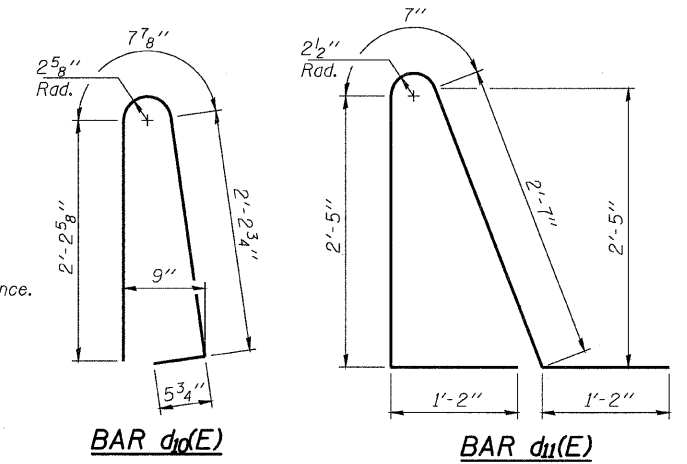


VIEW E-E



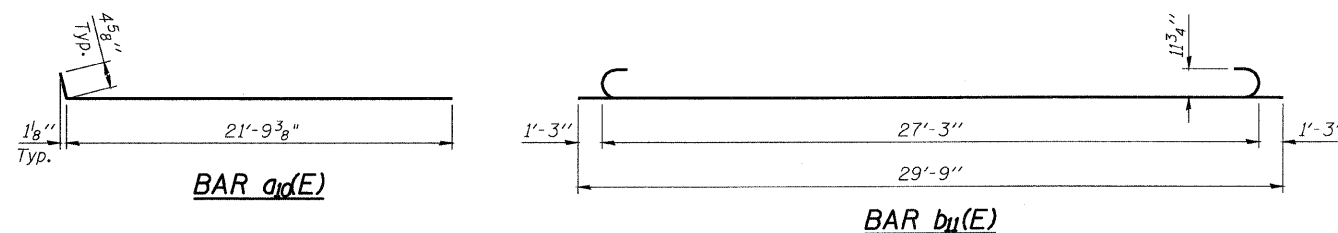
1" ANCHOR BOLT

(Cost included with Concrete Superstructure)



TWO APPROACHES  
BILL OF MATERIAL

Bar	No.	Size	Length	Shape
a10(E)	100	#4	22'-2"	—
a11(E)	92	#5	42'-1"	—
a12(E)	48	#6	6'-6"	—
b10(E)	66	#4	29'-8"	—
b11(E)	202	#9	29'-9"	—
b12(E)	4	#4	14'-8"	—
b13(E)	4	#4	14'-10"	—
d10(E)	68	#5	5'-7"	U
d11(E)	68	#5	7'-11"	T
e10(E)	32	#4	14'-8"	—
e11(E)	4	#8	14'-8"	—
t(E)	172	#4	9'-10"	—
w(E)	80	#5	42'-1"	—
Bridge Deck Grooving		Sq. Yd.	257	
Protective Coat		Sq. Yd.	301	
Concrete Superstructure		Cu. Yd.	132.8	
Concrete Structures		Cu. Yd.	26.2	
Reinforcement Bars, Epoxy Coated		Pound	33880	



BAR a10(E)

BAR b11(E)

DESIGNED	H. ALKHATIB
CHECKED	S. CHELBIAN
DRAWN	D. C. PATEL
CHECKED	J. GRAINAWI

BA-R 11-1-09



BRIDGE APPROACH SLAB  
DETAILS II  
F.A.P. ROUTE 301 SECTION 177-2VB-1  
STEPHENSON COUNTY  
STATION 569+87.29  
STRUCTURE NO. 089-0083

FOR INFORMATION ONLY