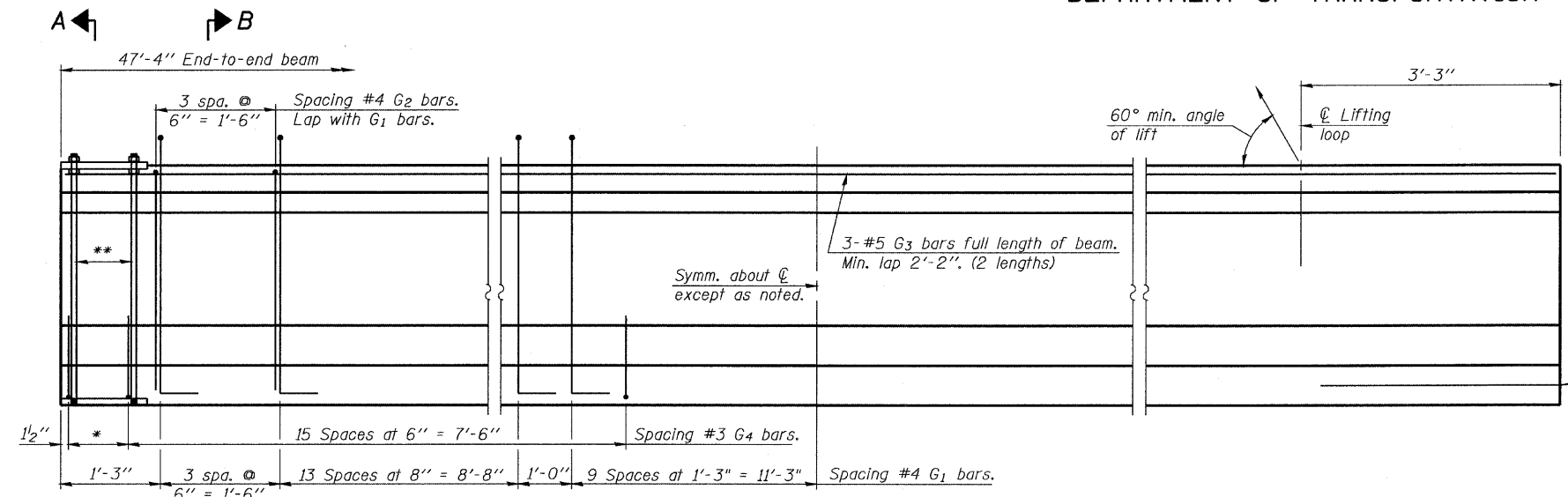


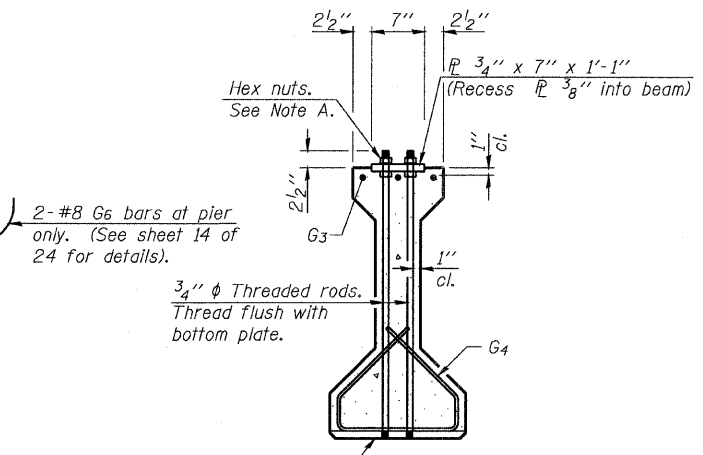
STATE OF ILLINOIS  
DEPARTMENT OF TRANSPORTATION

ROUTE NO.	SECTION	COUNTY	TOTAL SHEETS	SHEET NO.
FAP 301	177-2	STEPHENSON	386	200
FED. ROAD DIST. NO. 7	ILLINOIS	FED. AID PROJECT-		

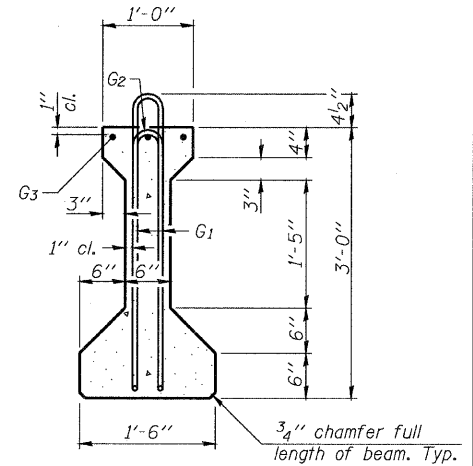
Contract No. 64799



**ELEVATION OF BEAM**  
(Showing reinforcement & dimensions)



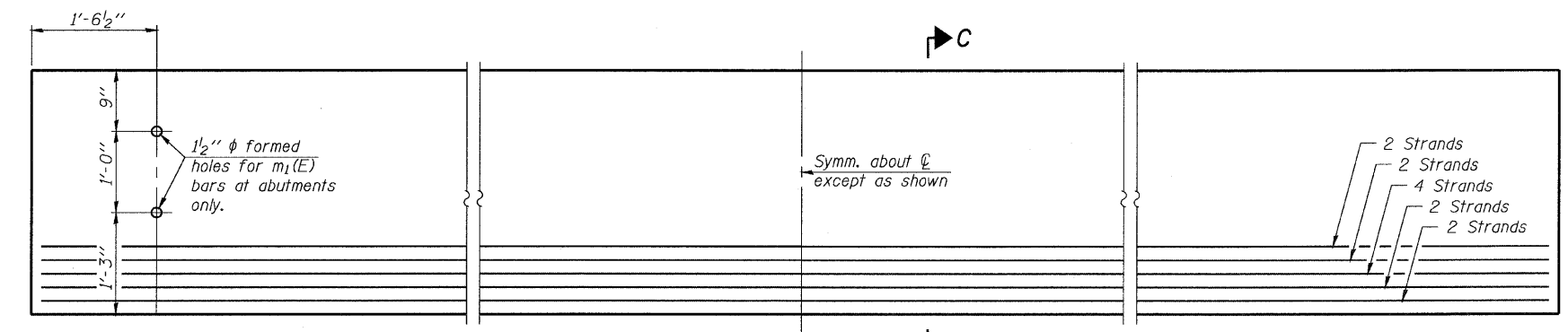
**SECTION A-A**



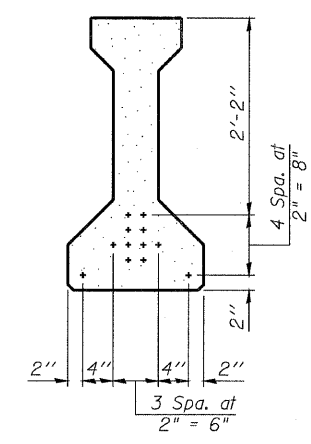
**SECTION B-B**

\* 3 spaces at 3" = 9".  
\*\* 4-3/4" φ threaded dowel rods at 3" cts., each face.

Note A:  
Hex nuts (top and bottom) with lock washers (top). Only tighten sufficiently to compress lock washers.



**ELEVATION OF BEAM**  
(Showing prestressing steel)



**SECTION C-C**

**\*\*\* BAR LIST  
ONE BEAM ONLY**

Bar	No.	Size	Length	Shape
G <sub>1</sub>	53	#4	7'-5"	⊔
G <sub>2</sub>	8	#4	5'-8"	⊔
G <sub>3</sub>	6	#5	24'-8"	—
G <sub>4</sub>	38	#3	4'-1"	⊔
G <sub>6</sub>	**** 2	#8	3'-9"	⊔

\*\*\* For information only.  
\*\*\*\* 4 for middle span beam.

Notes:  
See sheet 14 of 24 for additional details and Bill of Material.  
Required release strength, f'ci, shall be 5,000 psi.

DESIGNED	M.SHAIKH
CHECKED	J. ZUO
DRAWN	D.C.PATEL
CHECKED	J.GRAINAWI

**36" PPC I-BEAM**  
**F.A.P. ROUTE 301 SECTION 177-2VB-1**  
**STEPHENSON COUNTY**  
**STATION 569+87.29**  
**STRUCTURE NO. 089-0083**



T:\16814A\Struct\Cadd\Pre\final\US20 Bridge 089-0083 (Jane Addams Trail Bridge)\000000-64799-000-000-013.dgn  
25-JAN-2010 14:25