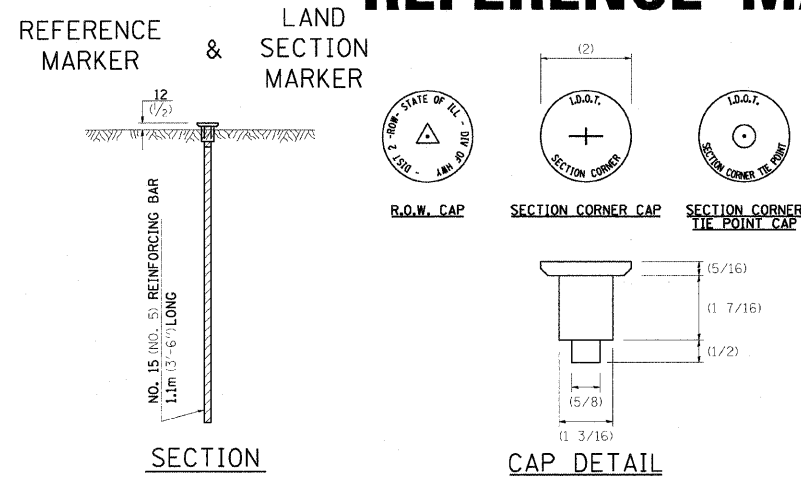
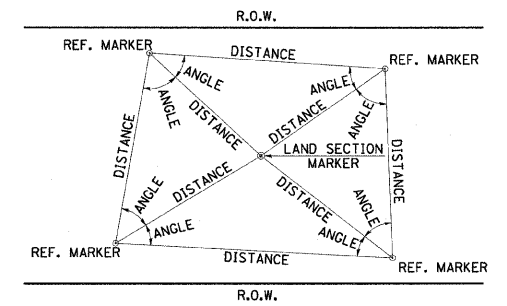


F.A. RTE.	SECTION	COUNTY	TOTAL SHEETS	SHEET NO.
301	177-2 (-1A, B-1, VB-1)	STEPHENSON	386	223
STA.		TO STA.		
FED. ROAD DIST. NO.		ILLINOIS FED. AID PROJECT		
P-92-029-02				

LAND SECTION & REFERENCE MARKERS



METHOD OF REFERENCING MARKERS



- USE INSTRUMENT TIES TO NEARBY LAND-MARKS (STEEPLES, TOWERS, SILOS, ETC...)
- IN CULTIVATED FIELDS, SET 600(2') OR MORE BELOW GROUND SURFACE.
- IN FENCE LINE OR PROTECTED AREA SET TOP AT GROUND LEVEL.

METHOD OF REFERENCING POINTS

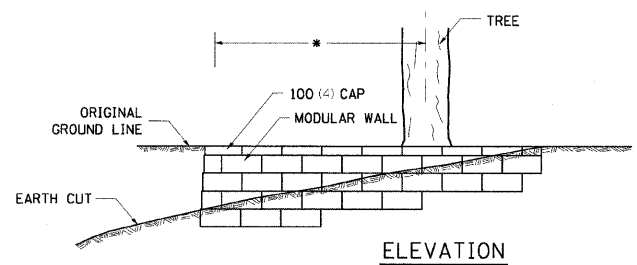
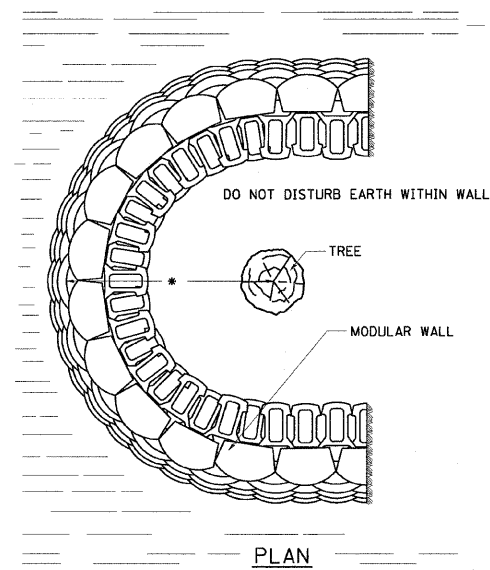
REFERENCE MARKERS SHALL BE USED TO TIE IN PERMANENT LAND SECTION AND 1/4 SECTION CORNERS. WHERE LAND SECTION MARKERS FALL IN THE SHOULDERS OR GRAVEL SURFACES, THE TOP OF THE BAR SHALL BE KEPT 75(3) BELOW THE SURFACE. LAND SECTION MARKERS LOCATED IN TRAFFIC LANES SHALL NOT BE REPLACED.

METAL CAPS SHALL BE PLACED ON TOP OF THE REINFORCEMENT BAR. THERE ARE 3 TYPES OF CAPS, ONE FOR THE RIGHT-OF-WAY CORNERS, ONE FOR THE SECTION CORNERS AND ONE FOR THE SECTION CORNER TIE POINTS. THE CAPS WILL BE SUPPLIED BY IDOT, CALL CHIP CORDELL (815) 284-5370 A MINIMUM OF ONE WEEK BEFORE THE CAPS ARE NEEDED

ALL DIMENSIONS ARE IN MILLIMETERS (INCHES) UNLESS OTHERWISE NOTED.

REVISED 4-22-05

TREE WALL



- HEIGHT OF WALL DEPENDENT ON SLOPE OF THE CUT.
- * THE RADIUS OF THE TREE WALL SHALL BE DETERMINED BY MULTIPLYING 6 BY THE DIAMETER OF THE TREE, WITH A MAXIMUM OF A 3.6m (12 FT.) RADIUS.
 - USE 200 (8) HIGH BLOCKS EXCEPT WHEN HEIGHT OF WALL IS LESS THAN 600 (24), THEN 100 (4) HIGH BLOCKS SHALL BE USED.

NOTES

SPECIAL CARE SHALL BE TAKEN BY THE CONTRACTOR NOT TO DISTURB THE EARTH OR THE ROOTS WITHIN THE PROPOSED TREE WALL.

THESE TREE WALLS SHALL BE PAID FOR AT THE CONTRACT UNIT PRICE PER SQUARE METER (SQ. FT.) FOR "SEGMENTAL CONCRETE BLOCK WALL" INCLUDED IN THIS SHALL BE THE FACE OF THE WALL THAT ARE BURIED.

ALL DIMENSIONS ARE IN MILLIMETERS (INCHES) UNLESS OTHERWISE NOTED.

REVISED 5-4-94

PLOT DATE = 1/26/2009
FILE NAME = #FILE#
PLOT SCALE = #SCALE#
REFERENCE = #REF#