

F.A.P. RTE.	SECTION	COUNTY	TOTAL SHEETS	SHEET NO.
332	(3, D-1)RS-2; (14, 15, 2)RS	IROQUOIS	15	1
		ILLINOIS	CONTRACT NO. 66643	

STATE OF ILLINOIS
DEPARTMENT OF TRANSPORTATION
DIVISION OF HIGHWAYS
**PROPOSED
HIGHWAY PLANS**

INDEX OF SHEETS

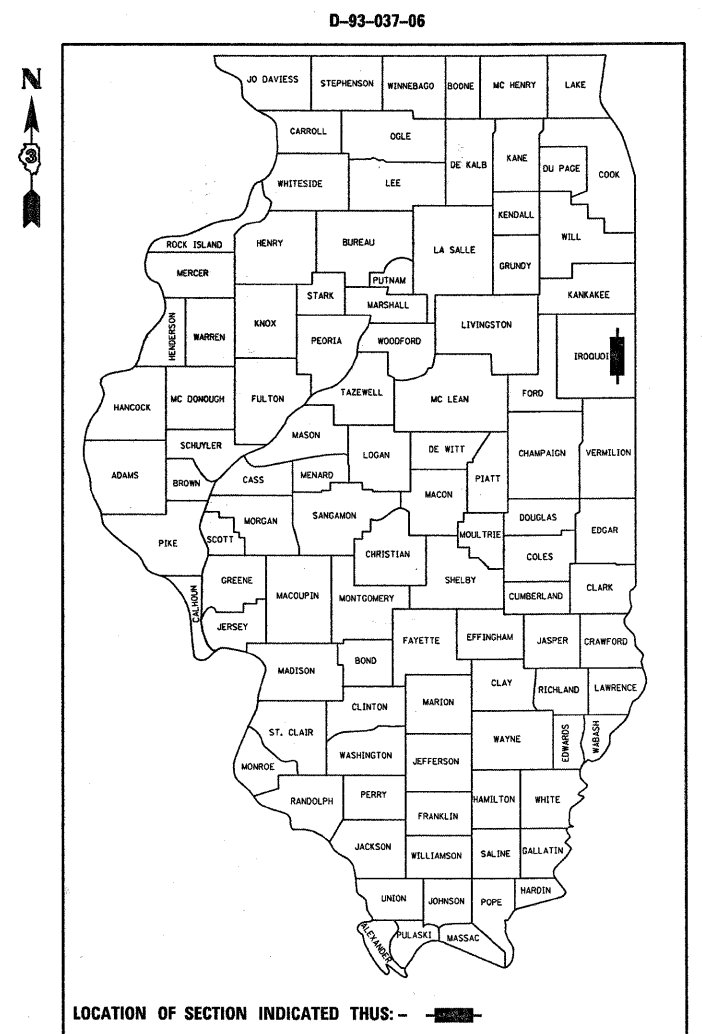
1	COVER SHEET
2	GENERAL NOTES
3	SUMMARY OF QUANTITIES
4	TYPICAL SECTIONS
5-7	SCHEDULES
8	SURVEY TIES
9	PROJECT LAYOUT
10-11	DETECTOR LOOP DETAILS
12	PAVEMENT MARKING DETAILS
13-15	DETAILS

STANDARDS

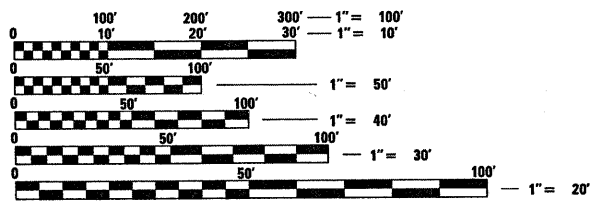
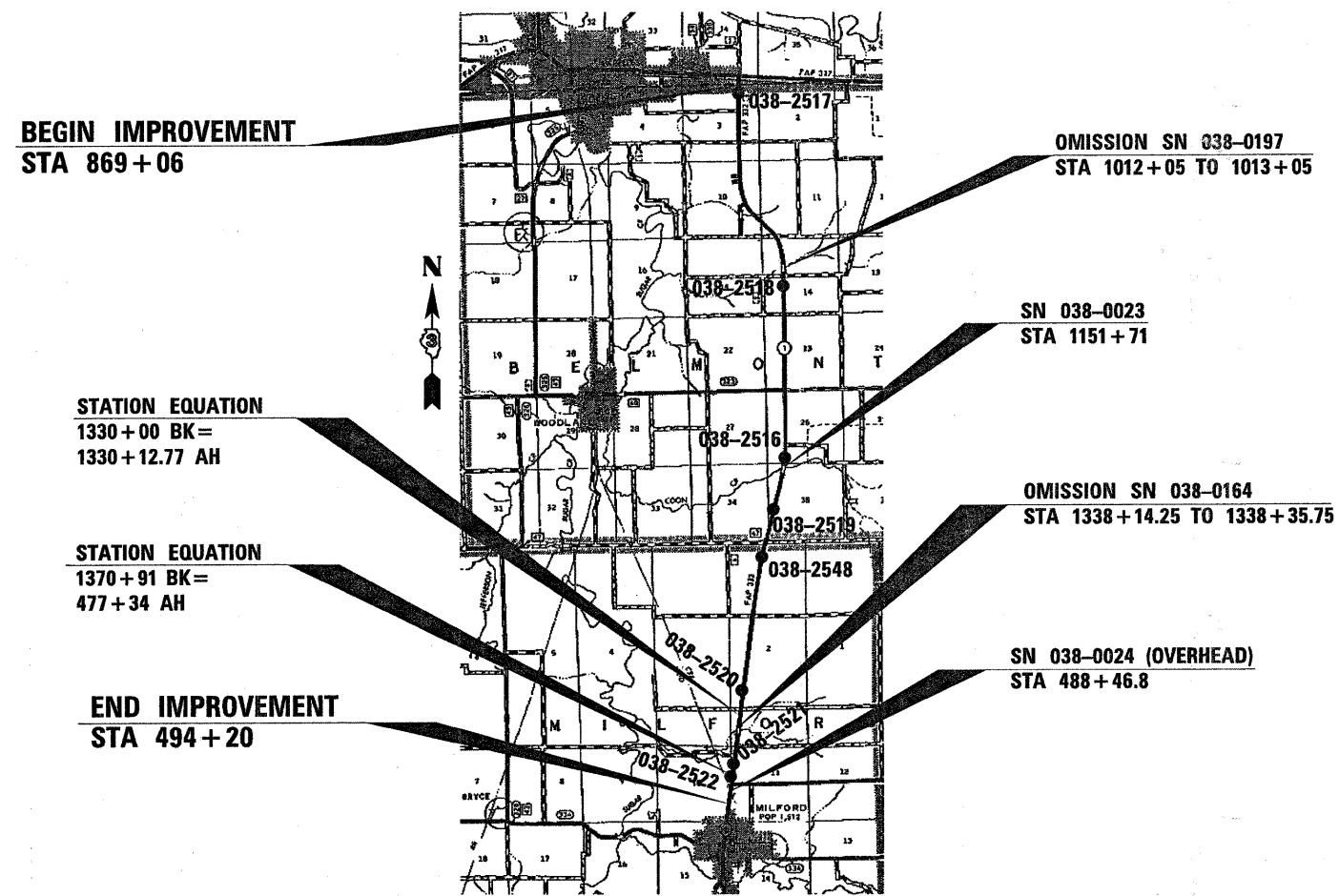
000001-05	STANDARD SYMBOLS, ABBREVIATIONS AND PATTERNS
001006	DECIMAL OF AN INCH AND OF A FOOT
280001-05	TEMPORARY EROSION CONTROL SYSTEMS
635006-03	REFLECTOR AND TERMINAL MARKER PLACEMENT
635011-02	REFLECTOR MARKER AND MOUNTING DETAILS
701006-03	OFF-ROAD OPERATIONS 2L, 2W, 15' (4.5 m) TO 24" (600 mm) FROM PAVEMENT EDGE
701011-02	OFF-ROAD MOVING OPERATIONS 2L, 2W, DAY ONLY
701301-03	LANE CLOSURE, 2L, 2W, SHORT TIME OPERATIONS
701306-02	LANE CLOSURE, 2L, 2W, SLOW MOVING OPERATIONS DAY ONLY, FOR SPEEDS ≥ 45 MPH
701311-03	LANE CLOSURE, 2L, 2W, MOVING OPERATIONS - DAY ONLY
701901-01	TRAFFIC CONTROL DEVICES
780001-02	TYPICAL PAVEMENT MARKINGS
781001-03	TYPICAL APPLICATIONS RAISED REFLECTIVE PAVEMENT MARKERS
886001-01	DETECTOR LOOP INSTALLATIONS
886006-01	TYPICAL LAYOUT FOR DETECTION LOOPS
667101-01	PERMANENT SURVEY MARKERS

**FAP ROUTE 332 (IL 1)
SECTION (3, D-1)RS-2; (14, 15, 2)RS**

**3P MILLING AND RESURFACING FROM
US 24 TO NORTH CORPORATE LIMITS
OF MILFORD
IROQUOIS COUNTY**



C-93-053-06



FULL SIZE PLANS HAVE BEEN PREPARED USING STANDARD ENGINEERING SCALES. REDUCED SIZED PLANS WILL NOT CONFORM TO STANDARD SCALES. IN MAKING MEASUREMENTS ON REDUCED PLANS, THE ABOVE SCALES MAY BE USED.

J.U.I.E.
JOINT UTILITY LOCATION INFORMATION FOR EXCAVATION
1-800-892-0123
OR 811

**PROJECT ENGINEER: JOE KANNEL
UNIT CHIEF: MICHELE LINDEMANN**

CONTRACT NO. 66643

GROSS LENGTH = 52039.23 FT. = 9.856 MILE
NET LENGTH = 51736.73 FT. = 9.799 MILE

OTHER PRINCIPAL ARTERIAL
2010 ADT = 3400
P.V. = 86%
S.U. = 6%
M.U. = 8%

STATE OF ILLINOIS
DEPARTMENT OF TRANSPORTATION
DIVISION OF HIGHWAYS

SUBMITTED January 25, 2010
George Ryan
DEPUTY DIRECTOR OF HIGHWAYS, REGION ENGINEER

March 19, 2010
Scott E. Stitt, P.E./e
ACTING ENGINEER OF DESIGN AND ENVIRONMENT

March 19, 2010
Christine M. Reed/e
DIRECTOR OF HIGHWAYS, CHIEF ENGINEER

**PRINTED BY THE AUTHORITY
OF THE STATE OF ILLINOIS**

GENERAL NOTES

THE THICKNESS OF HMA SHOWN ON THE PLANS IS THE NOMINAL THICKNESS. DEVIATIONS FROM THE NOMINAL THICKNESS WILL BE PERMITTED WHEN SUCH DEVIATIONS OCCUR DUE TO IRREGULARITIES IN THE EXISTING SURFACE OR BASE ON WHICH THE HMA IS PLACED.

THE HMA SURFACE OF ALL MAILBOX TURNOUTS, PRIVATE ENTRANCES, COMMERCIAL ENTRANCES, AND SIDE ROADS SHALL BE MADE NEATLY, IN A WORKMANLIKE MANNER, AND SHALL ACCURATELY CONFORM TO THE SHAPES AND DIMENSIONS SHOWN ON THE PLAN DETAILS. IF REQUIRED BY THE ENGINEER, THE CONTRACTOR SHALL BE REQUIRED TO SAW CUT THE HMA SURFACE TO CONFORM TO THE SHAPES AND DIMENSIONS SHOWN ON THE PLAN DETAILS. THIS WORK SHALL BE INCLUDED IN THE COST OF THE HMA SURFACE.

THE ENGINEER WILL BE THE SOLE JUDGE CONCERNING CURING TIME FOR THE VARIOUS HMA LIFTS.

SEEDING SHALL NOT BE PERMITTED AT ANY TIME WHEN THE GROUND IS FROZEN, WET, OR IN AN UNTILLABLE CONDITION. LOCATIONS TO BE SEEDED WILL BE DETERMINED BY THE ENGINEER.

THE FINISHED EARTHWORK SHALL HAVE A VEGETATION SUSTAINING SOIL COVERING THE TOP FOUR INCHES IN AREAS TO BE SEEDED OR SODDED. THE VEGETATION SUSTAINING SOIL REQUIRED WILL NOT BE PAID FOR SEPARATELY BUT SHALL BE INCLUDED IN THE COST OF EMBANKMENT.

ON EXISTING PAVEMENT WHICH MAY BE SUPERELEVATED, THE NEW HMA PAVEMENT SHALL BE BUILT WITH THE SAME SUPERELEVATION UNLESS NEW SUPERELEVATION RATES ARE GIVEN ON THE PLANS.

ANY REFERENCE TO A STANDARD IN THESE PLANS SHALL BE INTERPRETED TO MEAN THE EDITION AS INDICATED BY THE SUBNUMBER SHOWN IN THE LIST OF STANDARDS OR THE COPY INCLUDED IN THESE PLANS.

THE FOLLOWING RATES OF APPLICATION HAVE BEEN USED IN CALCULATING PLAN QUANTITIES:

GRANULAR MATERIALS	2.05	TONS / CU YD
BIT MATERIALS (PRIME COAT) ON AGGREGATE BASES	0.375	GAL / SQ YD
BITUMINOUS MATERIALS (PRIME COAT)	0.08	GAL / SQ YD
FOR ADDITIONAL HMA LIFTS "FOG COAT"	0.05	GAL / SQ YD
AGGREGATE PRIME COAT	0.002	TONS / SQ YD
HMA RESURFACING	112	LBS / SQ YD / IN
SHORT TERM PAVEMENT MARKING	10	FT / 100 FT OF APPLICATION
MIX FOR CRACKS, JTS & FLGWYS	0.0003	TONS / SQ YD
LEVEL BINDER (HAND METHOD)	0.0005	TONS / SQ YD

THE CONTRACTOR SHALL CONTACT JULIE AT LEAST 48 HOURS PRIOR TO EXCAVATION TO DETERMINE WHICH UTILITIES ARE IN THE AREA.

STATE OF ILLINOIS
DEPARTMENT OF TRANSPORTATION
DISTRICT THREE

PREPARED BY: David Blonil
Acting DISTRICT STUDIES & PLANS ENGINEER

DATE: January 25, 2010

EXAMINED BY: Heber Dang
DISTRICT CONSTRUCTION ENGINEER

Wayne P. Sullivan
DISTRICT MATERIALS ENGINEER

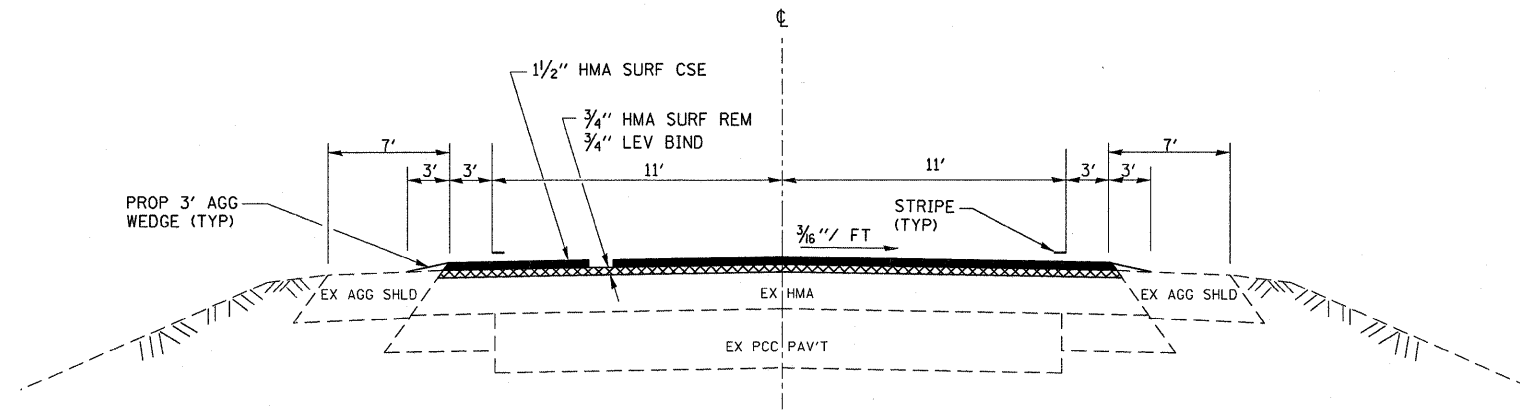
James A. Buckner
DISTRICT OPERATIONS ENGINEER

FILE NAME =	USER NAME = carpenterdj	DESIGNED -	REVISED -	STATE OF ILLINOIS DEPARTMENT OF TRANSPORTATION	GENERAL NOTES	F.A.P. RTE.	SECTION	COUNTY	TOTAL SHEETS	SHEET NO.	
ci:\pw\work\PWIDOT\CARPENTERDJ\017559\	366643-aht-cover.dgn	DRAWN -	REVISED -			332	(3, D-1RS-2; (14, 15, 2RS	IROQUOIS	15	2	
	PLOT SCALE = 50.0000' / IN.	CHECKED -	REVISED -			CONTRACT NO. 66643					
	PLOT DATE = Jan 25, 2010 - 07:17:47 AM	DATE -	REVISED -			ILLINOIS FED. AID PROJECT					
						SCALE: _____	SHEET NO. _____	OF _____	SHEETS	STA. _____	TO STA. _____

SUMMARY OF QUANTITIES			100% STATE
CODE NO.	ITEM	UNIT	1000 ROADWAY
20400800	FURNISHED EXCAVATION	CU YD	46
25000200	SEEDING, CLASS 2	ACRE	0.4
25000400	NITROGEN FERTILIZER NUTRIENT	POUND	32
25000500	PHOSPHORUS FERTILIZER NUTRIENT	POUND	32
25000600	POTASSIUM FERTILIZER NUTRIENT	POUND	32
25100630	EROSION CONTROL BLANKET	SQ YD	1584
40200800	AGGREGATE SURFACE COURSE, TYPE B	TON	23
40600100	BITUMINOUS MATERIALS (PRIME COAT)	GALLON	21382
40600300	AGGREGATE (PRIME COAT)	TON	652
40600400	MIXTURE FOR CRACKS, JOINTS, AND FLANGEWAYS	TON	48
40600525	LEVELING BINDER (HAND METHOD), N50	TON	80
40600625	LEVELING BINDER (MACHINE METHOD), N50	TON	6711
40600895	CONSTRUCTING TEST STRIP	EACH	1
40600982	HOT-MIX ASPHALT SURFACE REMOVAL - BUTT JOINT	SQ YD	698
40600990	TEMPORARY RAMP	SQ YD	414
40603310	HOT-MIX ASPHALT SURFACE COURSE, MIX "C", N50	TON	13490
40800050	INCIDENTAL HOT-MIX ASPHALT SURFACING	TON	595
44000152	HOT-MIX ASPHALT SURFACE REMOVAL, 3/4"	SQ YD	116063
44000154	HOT-MIX ASPHALT SURFACE REMOVAL, 1 1/4"	SQ YD	228
44000158	HOT-MIX ASPHALT SURFACE REMOVAL, 2 1/4"	SQ YD	3889
48102100	AGGREGATE WEDGE SHOULDER, TYPE B	TON	1957
67000400	ENGINEER'S FIELD OFFICE, TYPE A	CAL MO	5
66700205	PERMANENT SURVEY MARKERS, TYPE I	EACH	1
67100100	MOBILIZATION	L SUM	1
70100460	TRAFFIC CONTROL AND PROTECTION, STANDARD 701306	L SUM	1

SUMMARY OF QUANTITIES (CONTINUED)			100% STATE
CODE NO.	ITEM	UNIT	1000 ROADWAY
70300100	SHORT-TERM PAVEMENT MARKING	FOOT	15557
70300210	TEMPORARY PAVEMENT MARKING - LETTERS AND SYMBOLS	SQ FT	61
70300220	TEMPORARY PAVEMENT MARKING - LINE 4"	FOOT	102413
70300240	TEMPORARY PAVEMENT MARKING - LINE 6"	FOOT	12966
70300250	TEMPORARY PAVEMENT MARKING - LINE 8"	FOOT	130
70300260	TEMPORARY PAVEMENT MARKING - LINE 12"	FOOT	45
70300280	TEMPORARY PAVEMENT MARKING - LINE 24"	FOOT	60
70301000	WORK ZONE PAVEMENT MARKING REMOVAL	SQ FT	1727
78000100	THERMOPLASTIC PAVEMENT MARKING - LETTERS AND SYMBOLS	SQ FT	225.2
78000200	THERMOPLASTIC PAVEMENT MARKING -LINE 4"	FOOT	85
78000400	THERMOPLASTIC PAVEMENT MARKING -LINE 6"	FOOT	1044
78000500	THERMOPLASTIC PAVEMENT MARKING -LINE 8"	FOOT	814
78000600	THERMOPLASTIC PAVEMENT MARKING -LINE 12"	FOOT	362
78000650	THERMOPLASTIC PAVEMENT MARKING - LINE 24"	FOOT	218
78001110	PAINT PAVEMENT MARKING-LINE 4"	FOOT	102413
78001130	PAINT PAVEMENT MARKING-LINE 6"	FOOT	12966
78100100	RAISED REFLECTIVE PAVEMENT MARKER	EACH	651
78200300	PRISMATIC CURB REFLECTOR	EACH	24
78200410	GUARDRAIL MARKERS, TYPE A	EACH	54
78201000	TERMINAL MARKER - DIRECT APPLIED	EACH	12
78300100	PAVEMENT MARKING REMOVAL	SQ FT	1803
78300200	RAISED REFLECTIVE PAVEMENT MARKER REMOVAL	EACH	651
88600100	DETECTOR LOOP, TYPE I	FOOT	250
X0322729	MATERIAL TRANSFER DEVICE	TON	13490
X8860100	LOOP DETECTOR TESTING	EACH	1
Z0048665	RAILROAD PROTECTIVE LIABILITY INSURANCE	L SUM	1

* SPECIALTY ITEMS



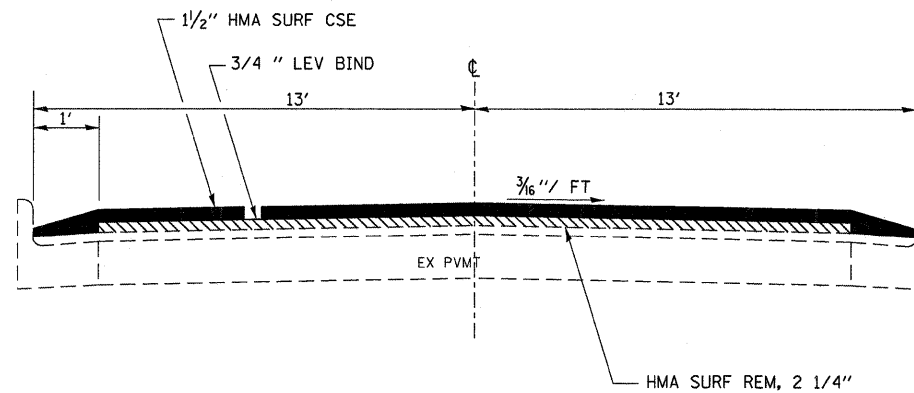
STATION EQUATION
 1330+00 BK=
 1330+12.77 AH

STATION EQUATION
 1370+91 BK=
 477+34 AH

TYPICAL SECTION

STA 869+09 TO STA 482+70

OMISSIONS
 SN 038-0197 - STA 1012+05 TO 1013+05
 SN 038-0164 - STA 1338+14.25 TO 1338+35.75



TYPICAL SECTION

STA 482+70 TO STA 494+20

NOTES:

- 1) HMA SURFACE REMOVAL SHALL VARY FROM 3/4" AT STA 482+10 TO 2-1/4" AT STA 482+70. THIS TRANSITION AREA WILL BE PAID FOR AS HMA SURFACE REMOVAL 2-1/4".
- 2) HMA SURFACE REMOVAL SHALL VARY FROM 2-1/4" AT THE EDGE OF PAVEMENT TO 3/4" AT THE FACE OF CURB. THIS WORK WILL BE PAID FOR AS HMA SURFACE REMOVAL 2-1/4".
- 3) THE DECK OF SN 038-0023 SHALL BE MILLED 1-1/4" AND RESURFACED WITH 1-1/4" OF HMA SURFACE.

MIX DESIGN					
MIX	PG GRADE	DESIGN AIR VOIDS	MIX COMPOSITION	FRICTION AGG	DENSITY CONTROL
HMA SURFACE	PG 64-22	4.0% @N50	IL 12.5 OR IL 9.5	MIXTURE C	CORRELATION
HMA LEVEL BINDER	PG 64-22	4.0% @N50	IL 9.5		SATISFACTION OF THE ENGINEER

FILE NAME =	USER NAME = carpenterdj	DESIGNED -	REVISED -	STATE OF ILLINOIS DEPARTMENT OF TRANSPORTATION	TYPICAL SECTIONS	F.A.P. RTE.	SECTION	COUNTY	TOTAL SHEETS	SHEET NO.	
ca:\pwork\pwidot\carpenterdj\d0175591	d366643-shd-details.DGN	DRAWN -	REVISED -			332	(3, D-1RS-2, (14, 15, 2)RS	IROQUOIS	15	4	
	PLOT SCALE = 50,0000' / IN.	CHECKED -	REVISED -			CONTRACT NO. 66643					
	PLOT DATE = Jan 25, 2010 - 07:15:45 AM	DATE -	REVISED -			ILLINOIS FED. AID PROJECT					

PAVEMENT MARKING SCHEDULE																
LOCATION	LENGTH	PAINT PAVEMENT MARKING 4"		PAINT PVMT MARK 6"	THERMO PVMT MARK 4"	THERMO PVMT MARK 6"	THERMO PVMT MARK 8"	THERMO PVMT MARK 12"	THERMO PVMT MARK 24"	THERMO PVMT MARK LETTERS & SYMB	RAISED REFLECT PVMT MARK	RAISED REFLECT PVMT MARK REM	PRISMATIC CURB REFLECT	PVMT MARKING REM	SHORT TERM PVMT MARK	WORK ZONE PVMT MARK REM
		WHITE FOOT	YELLOW FOOT	YELLOW FOOT	WHITE FOOT	WHITE FOOT	WHITE FOOT	WHITE FOOT	WHITE FOOT	SQ FT	EACH	EACH	EACH	SQ FT	FOOT	SQ FT
INTERSECTION IL 1/ US 24		0		0	85	1044	684	317	158	164			16	1803		
869+06 to 1330+00 BK	46094	92188	997	11524						24	61.2	576	576		13828	1535
1330+12.77 AH TO 1370+91 BK	4078.23	8156		1020								51	51		1223	136
477+34 AH TO 482+70	536	1072		134								7	7	7	161	18
482+70 TO 494+20	1150			288			130	45	36			14	14	8	345	38
SUBTOTAL		101416	997	12966	85	1044	814	362	218	225.2	648	648	31	1803	15557	1727
PROJECT TOTAL		102413		12966	85	1044	814	362	218	225.2	648	648	31	1803	15557	1727

TEMPORARY PAVEMENT MARKING SCHEDULE								
LOCATION	LENGTH	TEMPORARY PAVEMENT MARKING 4"		TEMP PVMT MARK 6"	TEMP PVMT MARK 8"	TEMP PVMT MARK 12"	TEMP PVMT MARK 24"	TEMP PVMT MARK LETTERS & SYMB
		WHITE FOOT	YELLOW FOOT	YELLOW FOOT	WHITE FOOT	WHITE FOOT	WHITE FOOT	SQ FT
869+06 to 1330+00 BK	46094	92188	997	11524			24	61.2
1330+12.77 AH TO 1370+91 BK	4078.23	8156		1020				
477+34 AH TO 482+70	536	1072		134				
482+70 TO 494+20	1150			288	130	45	36	
SUBTOTAL		101416	997	12966	130	45	60	61.2
PROJECT TOTAL		102413		12966	130	45	60	61.2

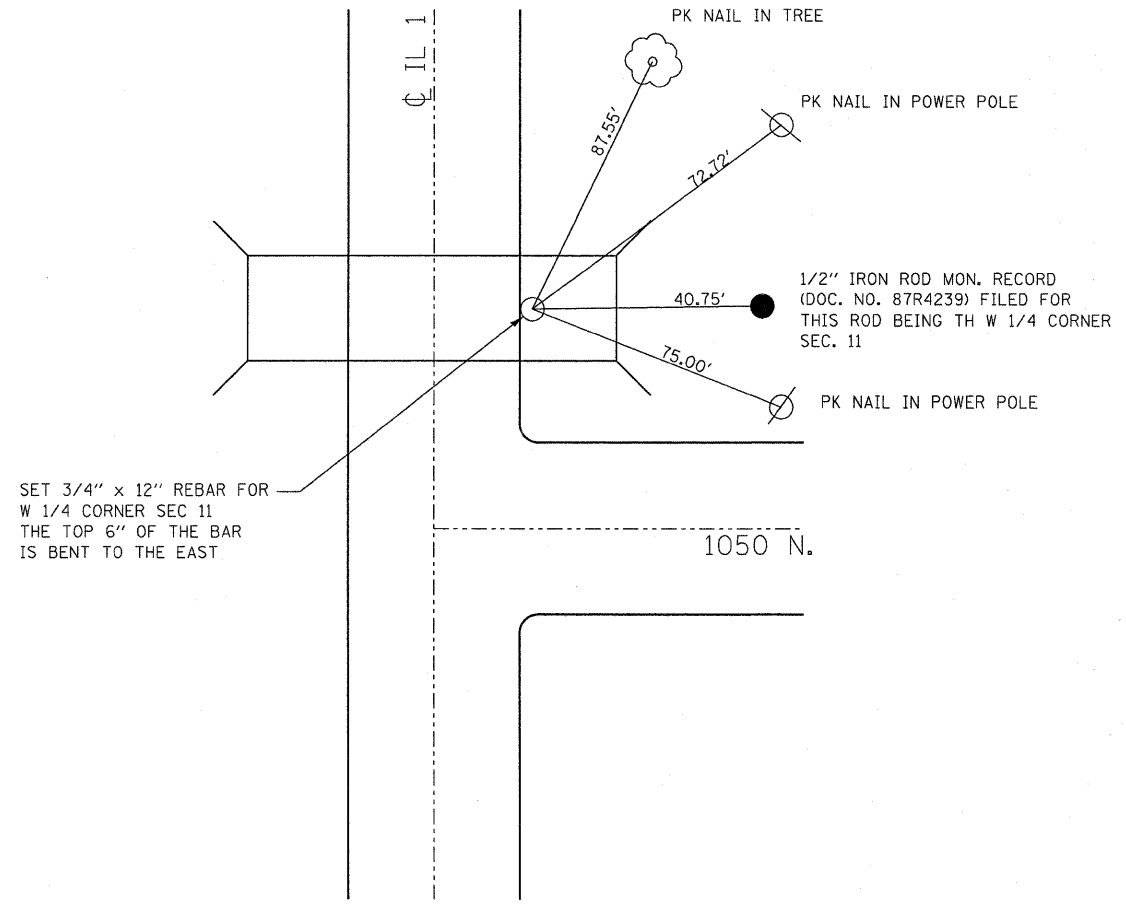
RESURFACING SCHEDULE																
LOCATION	LENGTH	PVMT AREA	HMA SURF CSE	LEVEL BINDER (MM)	HMA SURF REM 3/4"	HMA SURF REM 1 1/4"	HMA SURF REM 2-1/4"	HMA SURF REM (BUTT JT)	TEMP RAMP	BIT MAT (PR CT)	AGG (PR CT)	MIX FOR CRACKS, JOINTS & FLGWYS	LEVEL BINDER (HM)	AGG WEDGE SHLD TY B		
STA TO STA	FOOT	SQ YD	TON	TON	SQ YD	SQ YD	SQ YD	SQ YD	SQ YD	GALLON	TON	TON	TON	TON		
869+06 TO 870+16	RAILWAY TRANSITION	110	342.2	29.4	1.6	342.2			15.6	44	1.4	0.1	0.17	4.2		
870+16 TO 1011+75		14159	44050.2	3700.2	1850.1					5727	176.2	13.22	22.03	537.5		
1011+75 TO 1012+05	BUTT JOINT	30	93.3	7.8	3.9			93.3	15.6	12	0.4	0.03	0.05	1.1		
1012+05 TO 1013+05	SN 038-0197 OMISSION	100														
1013+05 TO 1013+35	BUTT JOINT	30	93.3	7.8	3.9			93.3	15.6	12	0.4	0.03	0.05	1.1		
1013+35 TO 1150+61		13726	42703.1	3587.1	1793.5	42703.1				5551	170.8	12.81	21.35	521.1		
1150+61 TO 1150+81	MILLING TRANSITION	20	62.2	5.2	2.6		20.0			8	0.2	0.02	0.03	0.8		
1150+81 TO 1152+69	SN 038-0023	188	584.9	40.9			188.0			47	2.3	0.18	0.29			
1152+69 TO 1152+89	MILLING TRANSITION	20	62.2	5.2	2.6		20.0			8	0.2	0.02	0.03	0.8		
1152+89 TO 1330+00 BK		17711	55100.9	4628.5	2314.2	55100.9				7163	220.4	16.53	27.55	672.4		
1330+12.77 AH TO 1337+84.25		771.48	2400.2	201.6	100.8	2400.2				312	9.6	0.72	1.2	29.3		
1337+84.25 TO 1338+14.25	BUTT JOINT	30	93.3	7.8	3.9			93.3	15.6	12	0.4	0.03	0.05	1.1		
1338+14.25 TO 1338+35.75	SN 038-0164 OMISSION	21.5														
1338+35.75 TO 1338+65.75	BUTT JOINT	30	93.3	7.8	3.9			93.3	15.6	12	0.4	0.03	0.05	1.1		
1338+65.75 TO 1370+91 BK		3225.25	10034.1	842.9	421.4	10034.1				1304	40.1	3.01	5.02	122.4		
477+34 AH TO 482+10		476	1480.9	124.4	62.2	1480.9				193	5.9	0.44	0.74	18.1		
482+10 TO 482+70	MILLING TRANSITION	60	173.3	14.6	7.3			173.3		23	0.7	0.05	0.09	2.3		
482+70 TO 494+20		1150	3322.2	279.1	139.5			3322.2	21.7	432	13.3	1	1.66	43.7		
TOTAL				13490.3	6711.4	112061.4	228.0	3495.5	373.2	99.7	20860	642.7	48.22	80.4	1957.0	

GUARDRAIL		
STRUCTURE	GUARDRAIL MARKERS	TERMINAL MARKERS DIRECT APPLIED
	EACH	EACH
038-0197	18	4
038-0023	14	4
038-0184	10	4
TOTALS	54	12

SEEDING SCHEDULE								
SIDEROAD OR DESCRIPTION	STATION	SIDE	SEEDING	FURN	EROSION	NIT	PHOS	POT
			CL 2	EXC	CONTROL	FERT	FERT	FERT
			ACRE	CU YD	BLANKET	NUT	NUT	NUT
					SQ YD	LB	LB	LB
CR 1760 N	892+30	RT	0.01	1.5	52	0.9	0.9	0.9
CR 7	913+96	RT	0.01	1.5	52	0.9	0.9	0.9
CR 1730 N	913+96	LT	0.01	1.5	52	0.9	0.9	0.9
PE WMBTO	935+08	LT	0.01	0.8	28	0.9	0.9	0.9
PE WMBTO	937+95	RT	0.01	0.8	28	0.9	0.9	0.9
1680 N ROAD	939+04	RT	0.01	1.5	52	0.9	0.9	0.9
1675 N ROAD	941+42	RT	0.01	1.5	52	0.9	0.9	0.9
PE WMBTO	941+90	LT	0.01	0.8	28	0.9	0.9	0.9
CR 2280 E	953+94	RT	0.01	1.5	52	0.9	0.9	0.9
CR 1600 N	988+87.5	RT	0.01	1.5	52	0.9	0.9	0.9
CR 1600 N	988+87.5	LT	0.01	1.5	52	0.9	0.9	0.9
CR 1550 N	1016+25	RT	0.01	1.5	52	0.9	0.9	0.9
CR 1550 N	1016+25	LT	0.01	1.5	52	0.9	0.9	0.9
MBTO	1020+90	LT	0.01	0.8	28	0.9	0.9	0.9
CR 1500 N	1042+79	RT	0.01	1.5	52	0.9	0.9	0.9
CR 1500 N	1042+79	LT	0.01	1.5	52	0.9	0.9	0.9
CR 1400 N	1095+96.5	RT	0.01	1.5	52	0.9	0.9	0.9
CR 1400 N	1095+96.5	LT	0.01	1.5	52	0.9	0.9	0.9
CR 1330 N	1135+51	LT	0.01	1.5	52	0.9	0.9	0.9
CR 1200 N	1203+55	RT	0.01	1.5	52	0.9	0.9	0.9
CR 1200 N	1203+55	LT	0.01	1.5	52	0.9	0.9	0.9
PE WMBTO	1227+21	LT	0.01	0.8	28	0.9	0.9	0.9
CR 1170 N	1257+07	RT	0.01	1.5	52	0.9	0.9	0.9
CR 1170 N	1257+07	LT	0.01	1.5	52	0.9	0.9	0.9
PE WMBTO	1267+37	LT	0.01	0.8	28	0.9	0.9	0.9
MBTO	1293+14	LT	0.01	1.5	52	0.9	0.9	0.9
PE W MBTO	1310+98	LT	0.01	0.8	28	0.9	0.9	0.9
CR 1120 N	1323+27	RT	0.01	1.5	52	0.9	0.9	0.9
CR 1120 N	1323+27	LT	0.01	1.5	52	0.9	0.9	0.9
CR 1100 N	1349+63	LT	0.01	1.5	52	0.9	0.9	0.9
PE W MBTO	1366+61	RT	0.01	0.8	28	0.9	0.9	0.9
MBTO	1370+45	RT	0.01	1.5	52	0.9	0.9	0.9
PE W MBTO	477+53	LT	0.01	0.8	28	0.9	0.9	0.9
PE W MBTO	478+35	LT	0.01	0.8	28	0.9	0.9	0.9
MBTO	478+58	RT	0.01	0.8	28	0.9	0.9	0.9
PE W MBTO	479+17	LT	0.01	0.8	28	0.9	0.9	0.9
TOTAL			0.36	45.6	1584	32.4	32.4	32.4

FILE NAME =	USER NAME = carpernterdj	DESIGNED -	REVISED -	STATE OF ILLINOIS DEPARTMENT OF TRANSPORTATION	SCHEDULES	F.A.P. RTE.	SECTION	COUNTY	TOTAL SHEETS	SHEET NO.	
es:\pwork\PIWIDOT\CARPENTERD.J\d0175591	366643-shit-details.DGN	DRAWN -	REVISED -			332	(3, D-IRS-2, (14, 15, 2)RS	IROQUOIS	15	6	
PLOT SCALE = 50,0000' / IN.	CHECKED -	REVISED -	REVISED -			CONTRACT NO. 66643					
PLOT DATE = Jan 25, 2010 - 07:15:18 AM	DATE -	REVISED -	REVISED -			ILLINOIS FED. AID PROJECT					
				SCALE: _____ SHEET NO. ____ OF ____ SHEETS STA. _____ TO STA. _____							

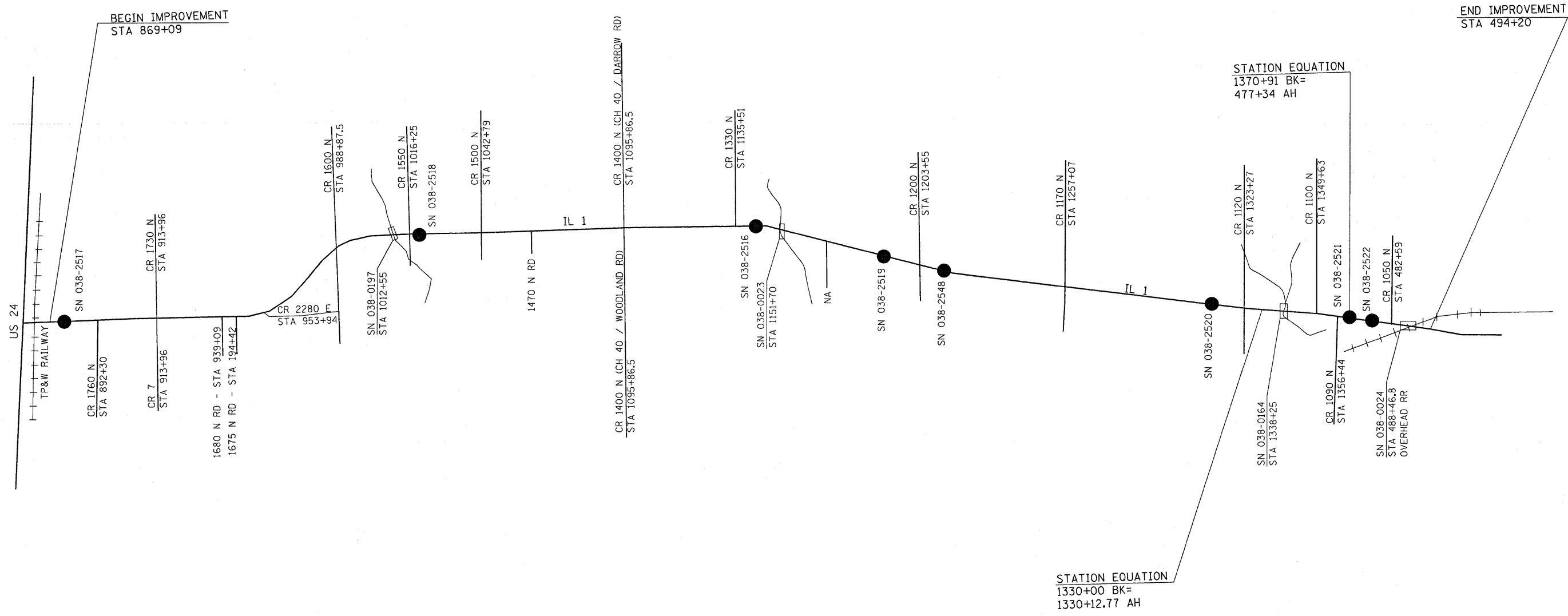
SIDEROAD AND ENTRANCE SCHEDULE													
STA	SIDE	SIDEROAD OR DESCRIPTION	EXIST MAT	WIDTH	AREA	INC HMA SURF	BIT MAT'L (PR CT)	AGG (PR CT)	TEMP RAMP	HMA SURF REM 3/4"	HMA SURF REM 2 1/4"	AGG SURF CSE	HMA SURF REM BUTT JT
				FOOT	SQ YD	TON	GAL	TON	SQ YD	SQ YD	SQ YD	TON	SQ YD
870+49	RT	CE	HMA	28	42	5.3	3.4	0.1		29.6			12.4
870+73	LT	CE	HMA/AGG	20	33	4.2	2.6	0.1		33.0		0.9	
872+55	RT	CE	HMA	32	47	5.9	3.8	0.1		32.8			14.2
877+83	LT	CE	HMA	28	42	5.3	3.4	0.1		29.6			12.4
892+30	RT	CR 1760 N	A3	20	110	13.9	8.8	0.2	11.1	110.0			
897+90	RT	CE	HMA	33	48	6.0	3.8	0.1		33.3			14.7
899+70	RT	CE	HMA	22	36	4.5	2.9	0.1		26.2			9.8
901+00	RT	CE	HMA	22	36	4.5	2.9	0.1		26.2			9.8
903+20	RT	CE	HMA	28	42	5.3	3.4	0.1		29.6			12.4
913+96	RT	CR 7	A3	20	110	13.9	8.8	0.2	11.1	110.0			
913+96	LT	CR 1730 N	A3	20	110	13.9	8.8	0.2	11.1	110.0			
935+08	LT	PE W/ MBTO	HMA/AGG	15	51	6.4	19.1	0.1		51.0		0.7	
937+95	RT	PE W/ MBTO	HMA/AGG	12	48	6.0	18.0	0.1		48.0		0.6	
939+04	RT	1680 N ROAD	A3	20	110	13.9	8.8	0.2	11.1	110.0			
941+42	RT	1675 N ROAD	A3	20	110	13.9	8.8	0.2	11.1	110.0			
941+90	LT	PE W/ MBTO	HMA/AGG	16	52	6.6	19.5	0.1		52.0		0.8	
953+94	RT	CR 2280 E	HMA	22	116	14.6	9.3	0.2	12.2	67.1			48.9
988+87.5	RT	CR 1600 N	A3	20	110	13.9	8.8	0.2	11.1	110.0			
988+87.5	LT	CR 1600 N	A3	20	110	13.9	8.8	0.2	11.1	110.0			
1006+55	RT	PE	HMA	20	33	4.2	2.6	0.1		24.1			8.9
1016+25	RT	CR 1550 N	A3	20	110	13.9	8.8	0.2	11.1	110.0			
1016+25	LT	CR 1550 N	A3	20	110	13.9	8.8	0.2	11.1	110.0			
1020+90	RT	PE	HMA/AGG	16	29	3.7	2.3	0.1		29.0		0.8	
1020+90	LT	MBTO	HMA		35	4.4	2.8	0.1		35.0			
1022+08	RT	PE	HMA/AGG	12	24	3.0	1.9	0.0		24.0		0.6	
1042+79	RT	CR 1500 N	A3	20	110	13.9	8.8	0.2	11.1	110.0			
1042+79	LT	CR 1500 N	A3	20	110	13.9	8.8	0.2	11.1	110.0			
1059+60	RT	PE	HMA	12	24	3.0	1.9	0.0		18.7			5.3
1095+96.5	RT	CR 1400 N	HMA	30	143	18.0	11.4	0.3	16.7	76.3			66.7
1095+96.5	LT	CR 1400 N	HMA	30	143	18.0	11.4	0.3	16.7	76.3			66.7
1097+90	RT	PE	HMA	24	38	4.8	3.0	0.1		27.3			10.7
1098+77	RT	PE	HMA	24	38	4.8	3.0	0.1		27.3			10.7
1111+84	LT	PE	HMA	24	38	4.8	3.0	0.1		27.3			10.7
1135+51	LT	CR 1330 N	A3	24	123	15.5	9.8	0.2	13.3	123.0			
1145+75	RT	PE	HMA/AGG	16	29	3.7	2.3	0.1		29.0		0.8	
1146+61	RT	PE	HMA/AGG	16	29	3.7	2.3	0.1		29.0		0.8	
1168+26	RT	PE	HMA/AGG	20	33	4.2	2.6	0.1		33.0		0.9	
1203+55	RT	CR 1200 N	A3	30	143	18.0	11.4	0.3	16.7	143.0			
1203+55	LT	CR 1200 N	A3	24	123	15.5	9.8	0.2	13.3	123.0			
1223+75	LT	PE	HMA/AGG	16	29	3.7	2.3	0.1		29.0		0.8	
1225+48	LT	PE	HMA/AGG	24	38	4.8	3.0	0.1		38.0		1.1	
1227+21	LT	PE W/ MBTO	HMA	24	61	7.7	4.9	0.1		50.3			10.7
1257+07	RT	CR 1170 N	A3	30	143	18.0	11.4	0.3	16.7	143.0			
1257+07	LT	CR 1170 N	A3	30	143	18.0	11.4	0.3	16.7	143.0			
1267+37	LT	PE W/ MBTO	HMA/AGG	24	61	7.7	22.9	0.1		61.0		1.1	
1293+14	RT	PE	HMA/AGG	24	38	4.8	3.0	0.1		38.0		1.1	
1293+14	LT	MBTO	HMA		35	4.4	2.8	0.1		35.0			
1310+98	LT	PE W/ MBTO	HMA/AGG	24	61	7.7	22.9	0.1		61.0		1.1	
1323+27	RT	CR 1120 N	AGG	24	123	15.5	9.8	0.2		123.0		1.1	
1323+27	LT	CR 1120 N	AGG	20	110	13.9	8.8	0.2		110.0		0.9	
1349+63	LT	CR 1100 N	AGG	20	110	13.9	8.8	0.2		110.0		0.9	
1350+67	RT	PE	AGG	18	31	3.9	2.5	0.1		31.0		0.9	
1352+11	RT	PE	AGG	18	31	3.9	2.5	0.1		31.0		0.9	
1353+21	RT	PE	AGG	18	31	3.9	2.5	0.1		31.0		0.9	
1355+93	LT	PE	AGG	16	29	3.7	2.3	0.1		29.0		0.8	
1356+77	RT	CR 1090 N	A3	20	110	13.9	8.8	0.2	11.1	110.0			
1356+90	LT	PE	HMA/AGG	16	29	3.7	2.3	0.1		29.0		0.8	
1366+61	RT	PE W/ MBTO	HMA/AGG	18	54	6.8	20.3	0.1		54.0		0.9	
1370+45	RT	MBTO	HMA		35	4.4	2.8	0.1		35.0			
477+53	LT	PE W/ MBTO	HMA/AGG	18	54	6.8	20.3	0.1		54.0		0.9	
478+35	LT	PE W/ MBTO	HMA/AGG	18	54	6.8	20.3	0.1		54.0		0.9	
478+58	RT	MBTO	HMA		35	4.4	2.8	0.1		35.0			
479+17	LT	PE W/ MBTO	HMA/AGG	18	54	6.8	20.3	0.1		54.0		0.9	
482+59	LT	CR 1050 N	HMA	105	393	49.5	31.4	0.8	58.3		393		
TOTAL						595.4	521.5	9.7	313.8	4002.0	393	22.9	325.0



STATION	DESCRIPTION	EXIST MONUMENT TYPE	PROP MONUMENT TYPE	MONUMENT RECORD TO BE RECORDED	RESPONSIBILITY
N/A	NW COR SW 1/4 SEC. 11-25-12W 2nd P.M.	3/4" PIN	TYPE 1 PLAQUE	YES	2

NOTE: FOR ALL MONUMENT LOCATIONS, SEE TIE SKETCHES

- 1) RESIDENT TO RE-ESTABLISH MONUMENT
- 2) RESIDENT TO RE-ESTABLISH MONUMENT AND FURNISH TIE SKETCHES TO D-3 PLATS AND PLANS
- 3) PROFESSIONAL LAND SURVEYOR TO RE-ESTABLISH MONUMENT, RECORD NEW MONUMENT RECORD AND PROVIDE COPY TO D-3 PLATS AND PLANS (PAY ITEM REQUIRED)



OMISSIONS:
 SN 038-0197
 STA 1012+05 TO 1013+05

 SN 038-0164
 STA 1338+14.25 TO 1338+35.75

FILE NAME = c:\pwork\pwid01\CARPENTERJ\d0175591	USER NAME = carpenterdj 386643-sht-details.DGN	DESIGNED - DRAWN - CHECKED - DATE -	REVISED - REVISED - REVISED - REVISED -
--	---	--	--

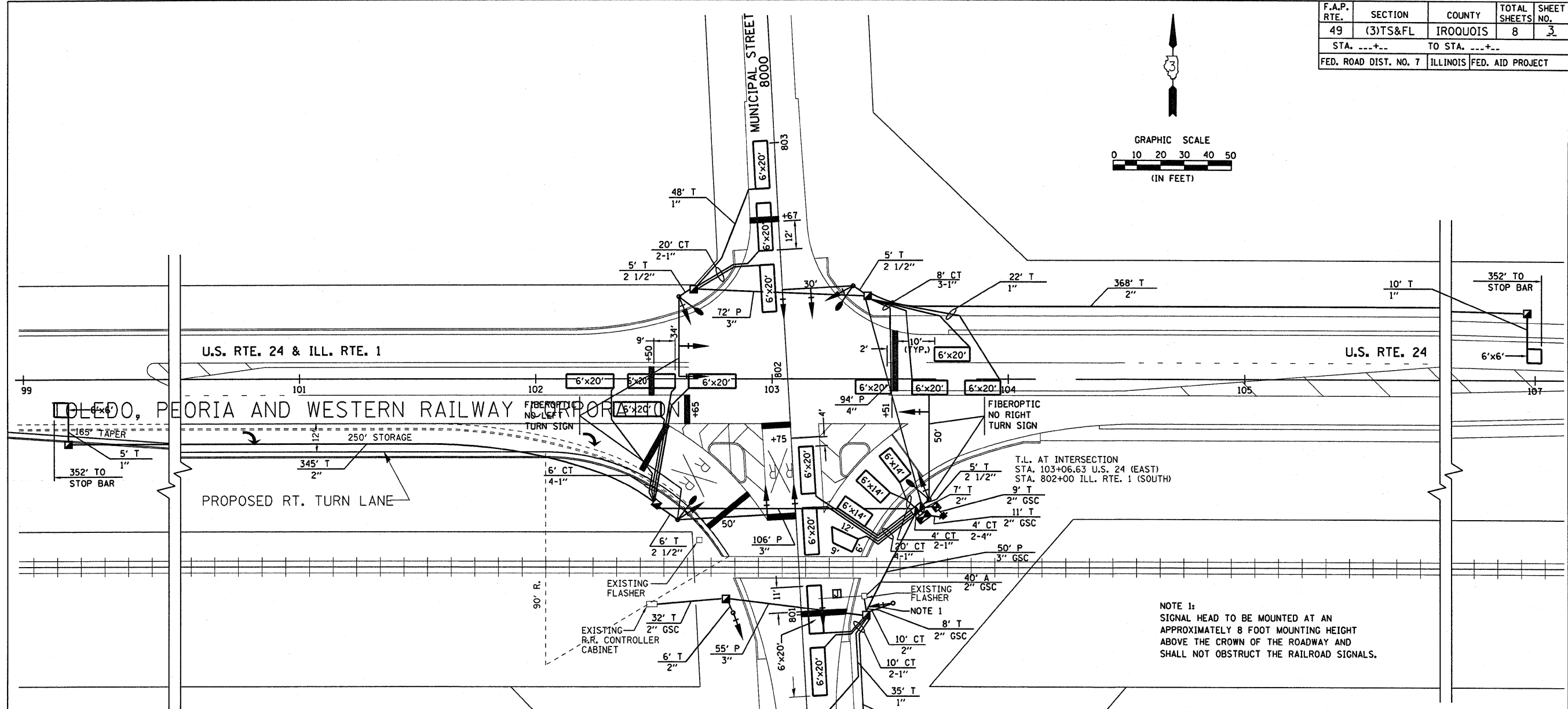
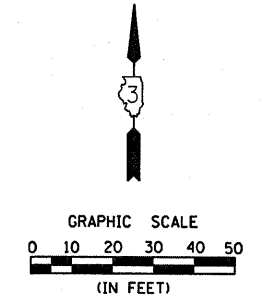
**STATE OF ILLINOIS
 DEPARTMENT OF TRANSPORTATION**

PLAN LAYOUT

SCALE: _____ SHEET NO. ____ OF ____ SHEETS STA. _____ TO STA. _____

F.A.P. RTE.	SECTION	COUNTY	TOTAL SHEETS	SHEET NO.
332	(3, D-1RS-2, (14, 15, 2)RS	IROQUOIS	15	9
CONTRACT NO. 66643				ILLINOIS FED. AID PROJECT

F.A.P. RTE.	SECTION	COUNTY	TOTAL SHEETS	SHEET NO.
49	(3)TS&FL	IROUOIS	8	3
STA. ---+---		TO STA. ---+---		
FED. ROAD DIST. NO. 7		ILLINOIS FED. AID PROJECT		



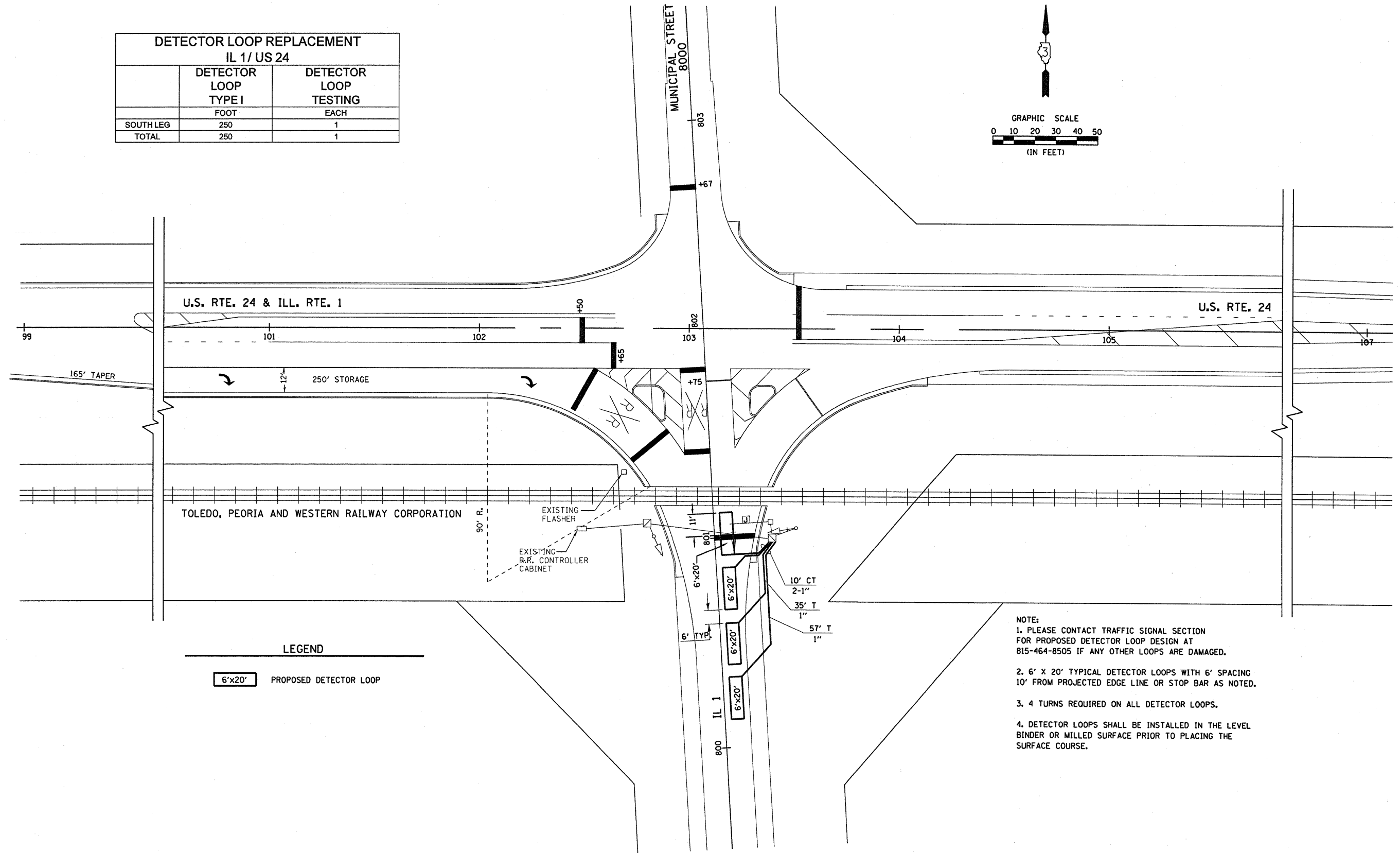
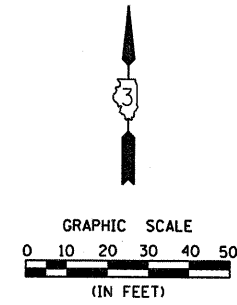
- LEGEND**
- PROPOSED JUNCTION BOX ATTACHED TO STRUCTURE
 - PROPOSED LIGHTING CONTROLLER
 - PROPOSED SERVICE INSTALLATION
 - PROPOSED DOUBLE HANDHOLD
 - PROPOSED HANDHOLD
 - PROPOSED STEEL MAST ARM W/ POST
 - PROPOSED SIGNAL HEAD W/ BACK PLATE
 - PROPOSED CONDUIT
 - PROPOSED CONTROLLER
 - PROPOSED LIGHT
 - PROPOSED DETECTOR LOOP

DESIGNED	M.V.F.
CHECKED	W.J.B.
DRAWN	W.J.B.
CHECKED	M.V.F.

EXISTING LOOPS - FOR INFORMATION ONLY

TRAFFIC SIGNAL PLAN
FAP ROUTE 49 (ILL. RTE. 1)
SECTION (3)TS&FL
IROUOIS COUNTY

DETECTOR LOOP REPLACEMENT IL 1/ US 24		
	DETECTOR LOOP TYPE I	DETECTOR LOOP TESTING
	FOOT	EACH
SOUTH LEG	250	1
TOTAL	250	1



LEGEND

	PROPOSED DETECTOR LOOP
--	------------------------

- NOTE:**
- PLEASE CONTACT TRAFFIC SIGNAL SECTION FOR PROPOSED DETECTOR LOOP DESIGN AT 815-464-8505 IF ANY OTHER LOOPS ARE DAMAGED.
 - 6' X 20' TYPICAL DETECTOR LOOPS WITH 6' SPACING 10' FROM PROJECTED EDGE LINE OR STOP BAR AS NOTED.
 - 4 TURNS REQUIRED ON ALL DETECTOR LOOPS.
 - DETECTOR LOOPS SHALL BE INSTALLED IN THE LEVEL BINDER OR MILLED SURFACE PRIOR TO PLACING THE SURFACE COURSE.

FILE NAME =	USER NAME = carpenterdj	DESIGNED -	REVISED -
c:\pwork\pwidot\carpenterdj\0175591\366643-sht-details.dgn		DRAWN -	REVISED -
PLOT SCALE = 50,0000' / IN.		CHECKED -	REVISED -
PLOT DATE = Jan 25, 2010 - 07:14:14 AM		DATE -	REVISED -

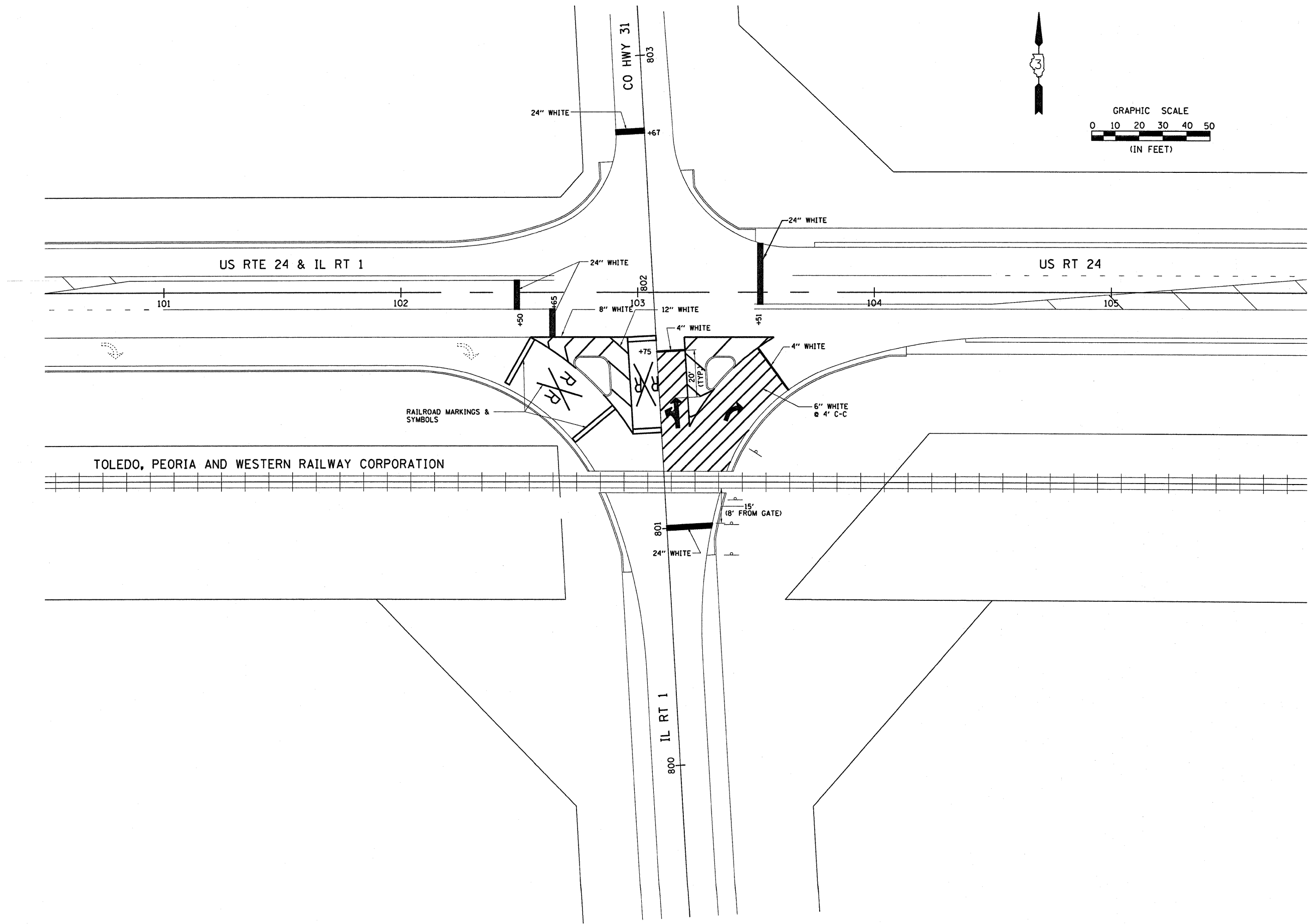
**STATE OF ILLINOIS
DEPARTMENT OF TRANSPORTATION**

DETECTOR LOOP DETAILS

SCALE: _____ SHEET NO. ____ OF ____ SHEETS STA. _____ TO STA. _____

F.A.P. RTE.	SECTION	COUNTY	TOTAL SHEETS	SHEET NO.
332	(3, D-1RS-2; (14, 15, 2)RS	IROQUOIS	15	11

CONTRACT NO. 66643
ILLINOIS FED. AID PROJECT



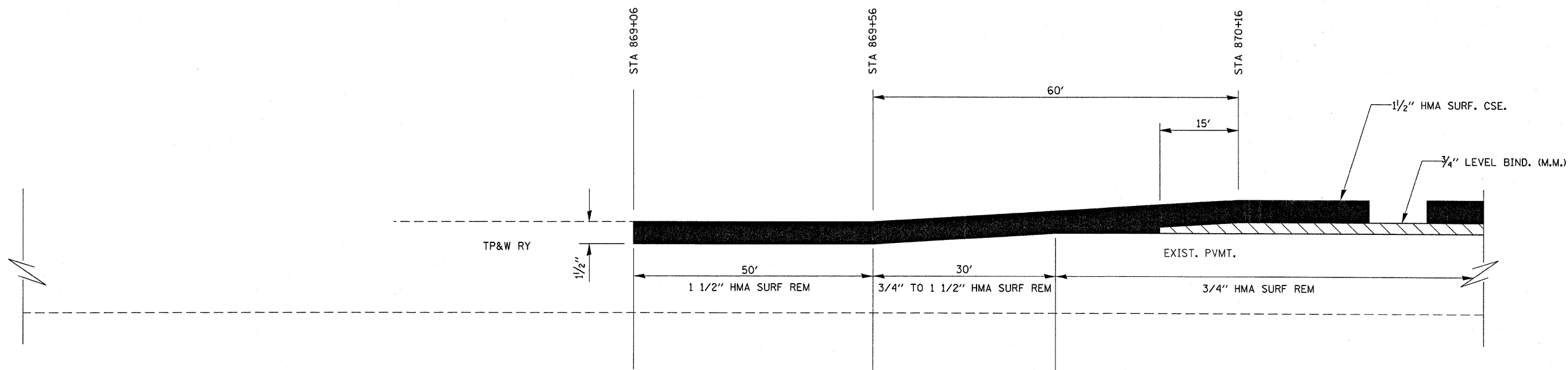
FILE NAME =	USER NAME = carpenterdj	DESIGNED -	REVISED -
c:\pwork\PWIDDT\CARPENTERDJ\d0175691	366643-shr-details.DGN	DRAWN -	REVISED -
	PLOT SCALE = 50.0000' / IN.	CHECKED -	REVISED -
	PLOT DATE = Jan 25, 2018 - 07:13:59 AM	DATE -	REVISED -

**STATE OF ILLINOIS
DEPARTMENT OF TRANSPORTATION**

PAVEMENT MARKING DETAILS

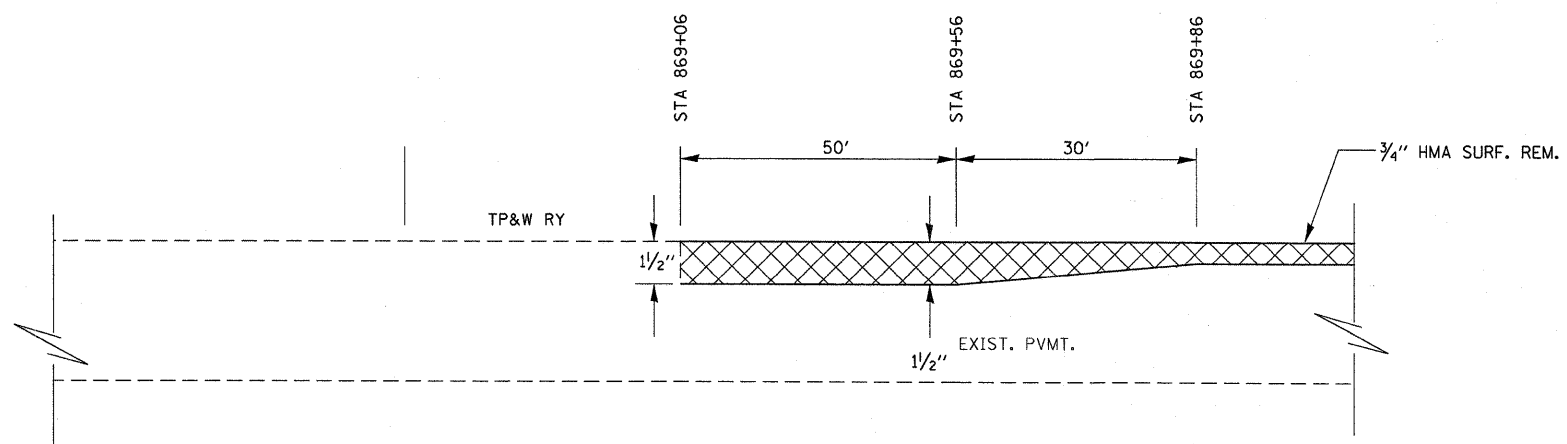
SCALE: _____ SHEET NO. ____ OF ____ SHEETS STA. _____ TO STA. _____

F.A.P. RTE.	SECTION	COUNTY	TOTAL SHEETS	SHEET NO.
332	(3, D-1RS-2, (14, 15, 2)RS	IROQUOIS	15	12
				CONTRACT NO. 66643
ILLINOIS FED. AID PROJECT				



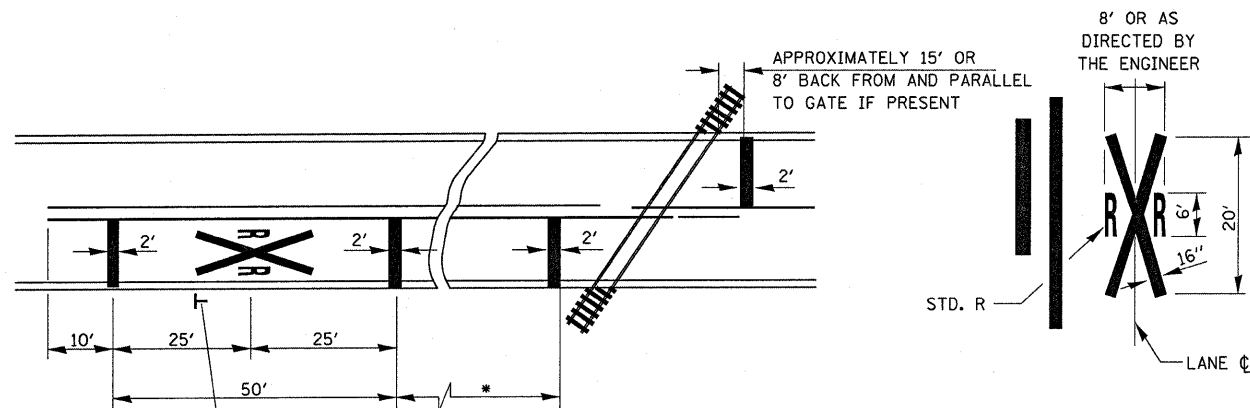
TAPER DETAIL AT RAILWAY

NOTE: HMA SURFACE REMOVAL TRANSITION AND HMA SURFACE REMOVAL, 1 1/2" WILL BE PAID FOR AS HMA SURFACE REMOVAL 3/4"



HMA SURFACE REMOVAL TRANSITION AT RAILWAY

FILE NAME =	USER NAME = carpenterdj	DESIGNED -	REVISED -	STATE OF ILLINOIS DEPARTMENT OF TRANSPORTATION	RESURFACING DETAIL AT TP & W RAILWAY		F.A.P. RTE.	SECTION	COUNTY	TOTAL SHEETS	SHEET NO.
ca\pwwork\pwwid\carpenterdj\d0175991\366643-sht-details.dgn	PLOT SCALE = 50.0000' / IN.	DRAWN -	REVISED -		332	(3, D-URS-2, (14, 15, 2)RS	IROQUOIS	15	13		
	PLOT DATE = Jan 25, 2010 - 07:13:35 AM	CHECKED -	REVISED -		SCALE: _____ SHEET NO. ____ OF ____ SHEETS STA. _____ TO STA. _____		CONTRACT NO. 66643		ILLINOIS FED. AID PROJECT		
		DATE -	REVISED -								



(W10-1)

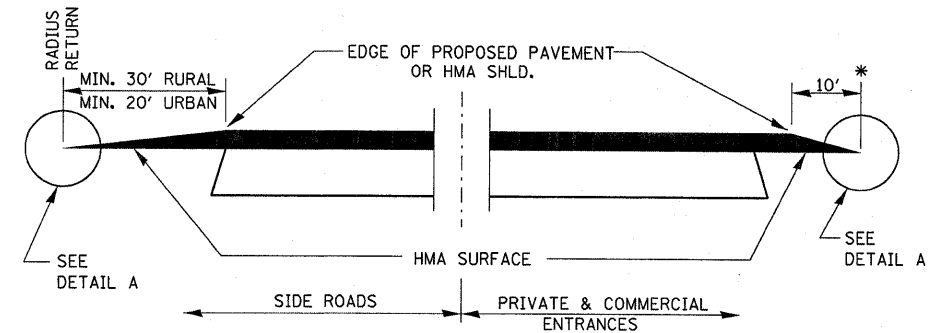
* MINIMUM DISTANCE
400' FOR 55 MPH
250' FOR 45 MPH
100' FOR 35 MPH OR LESS

PAVEMENT MARKINGS AT RAILROAD-HIGHWAY GRADE CROSSING

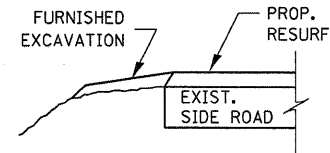
NOTES:
THE TRANSVERSE SPREAD OF THE "X" MAY VARY ACCORDING TO LANE WIDTH.

ON MULTI-LANE ROADS, THE STOP LINES SHALL EXTEND ACROSS ALL APPROACH LANES AND SEPARATE RXR SYMBOLS SHALL BE PLACED ADJACENT TO EACH OTHER IN EACH LANE.

WHEN THE PAVEMENT MARKING SYMBOL IS USED, A PORTION OF THE SYMBOL SHOULD BE LOCATED DIRECTLY ADJACENT TO THE ADVANCE WARNING SIGN (W10-1).

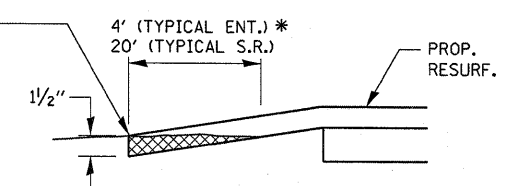


SECTION A-A DETAILS AT ENTRANCES & SIDE ROADS

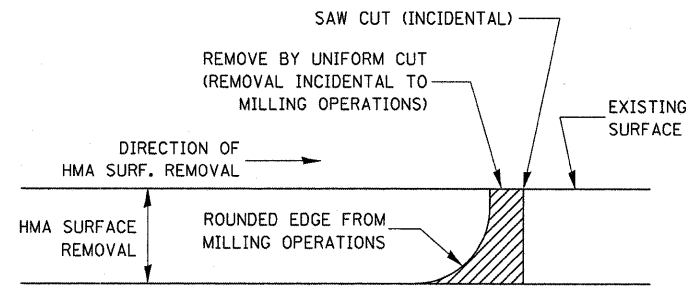


SECTION B-B

THE COST OF REMOVAL AT EXISTING HMA OR P.C.C. LOCATIONS SHALL BE PAID FOR PER SQ. YD. BY THE APPROPRIATE PAY ITEM. REMOVAL AT THE EXISTING AGG. LOCATIONS SHALL BE INCIDENTAL TO THE HMA. A-3 LOCATIONS SHALL BE FEATHER TAPERED.

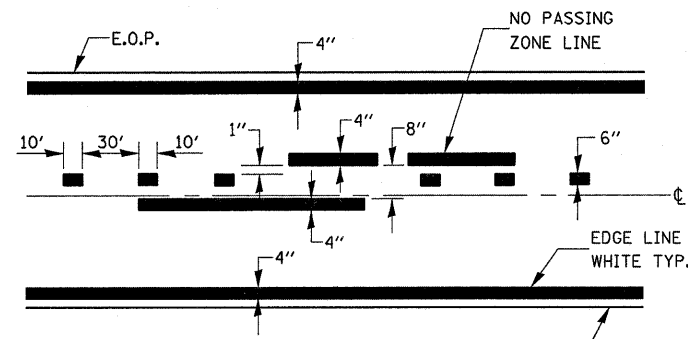


DETAIL A



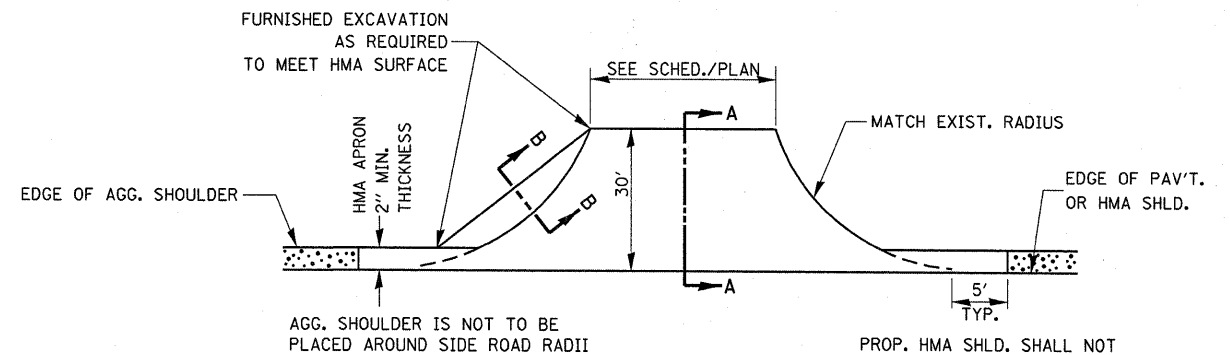
NOTE:
WHEN MILLING OPERATIONS PRODUCE A ROUNDED EDGE, THEN A SAW CUT SHALL BE USED TO MANUFACTURE A PERPENDICULAR EDGE AS SHOWN IN THE DETAIL. THE ENGINEER SHALL BE THE SOLE JUDGE CONCERNING THE USE OF THIS DETAIL.

HMA DETAIL AT BUTT JOINTS

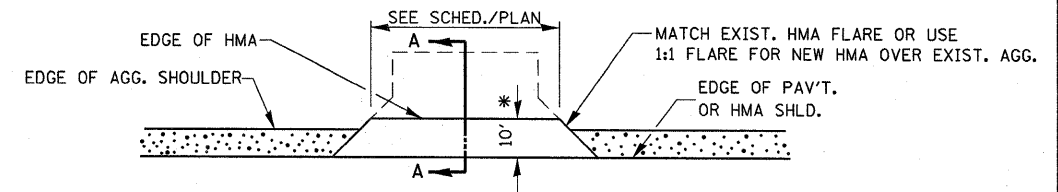


PAVEMENT MARKING

(SEE TYPICAL SECTIONS)



PLAN AT SIDE ROADS



PLAN AT PRIVATE & COMMERCIAL ENTRANCES

(DO NOT RESURFACE FIELD ENTRANCES)

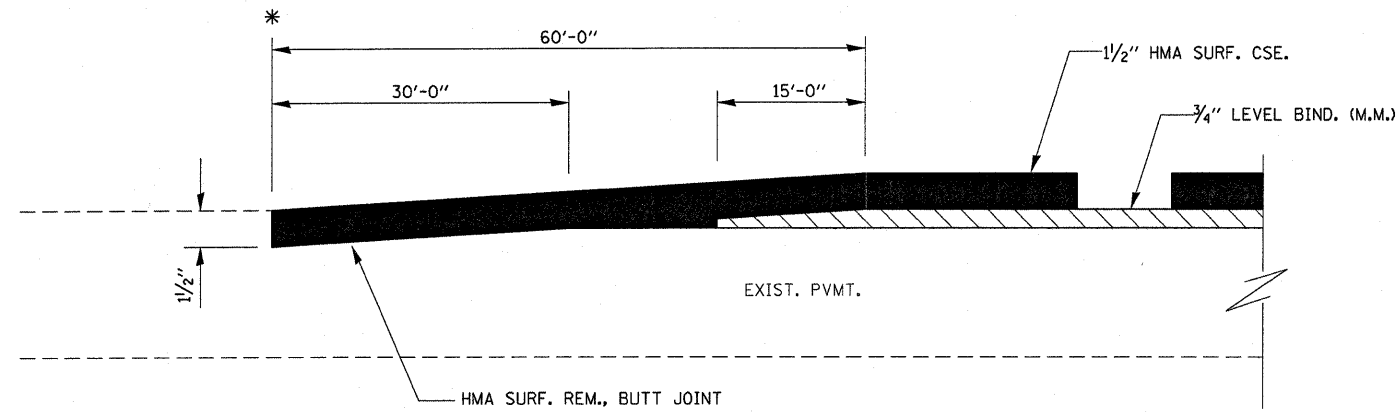
* PROPOSED HMA RESURFACING AT PUBLIC EDUCATIONAL FACILITY ENTRANCES SHALL BE EXTENDED TO THE RIGHT-OF-WAY LIMITS.

FILE NAME =	USER NAME = carpenterdj	DESIGNED -	REVISED -
ca:\pwwork\pwwid01\CARPENTERDJ\d0175591	3366643-sht-details.DGN	DRAWN -	REVISED -
	PLOT SCALE = 50,0000' / IN.	CHECKED -	REVISED -
	PLOT DATE = Jan 25, 2010 - 07:13:23 AM	DATE -	REVISED -

STATE OF ILLINOIS
DEPARTMENT OF TRANSPORTATION

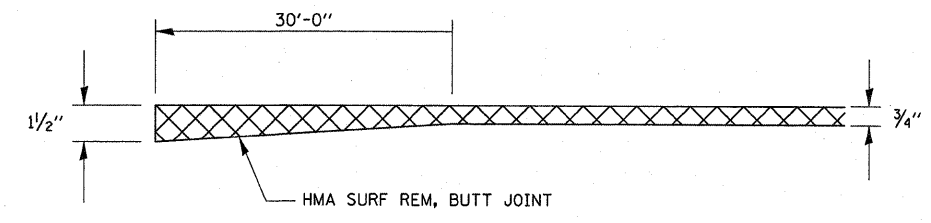
DETAILS			
SCALE: _____	SHEET NO. _____	OF _____ SHEETS	STA. _____ TO STA. _____

F.A.P. RTE.	SECTION	COUNTY	TOTAL SHEETS	SHEET NO.
332	(3, D-URS-2, (14, 15, 2)RS	IROQUOIS	15	14
CONTRACT NO. 66643				
ILLINOIS FED. AID PROJECT				

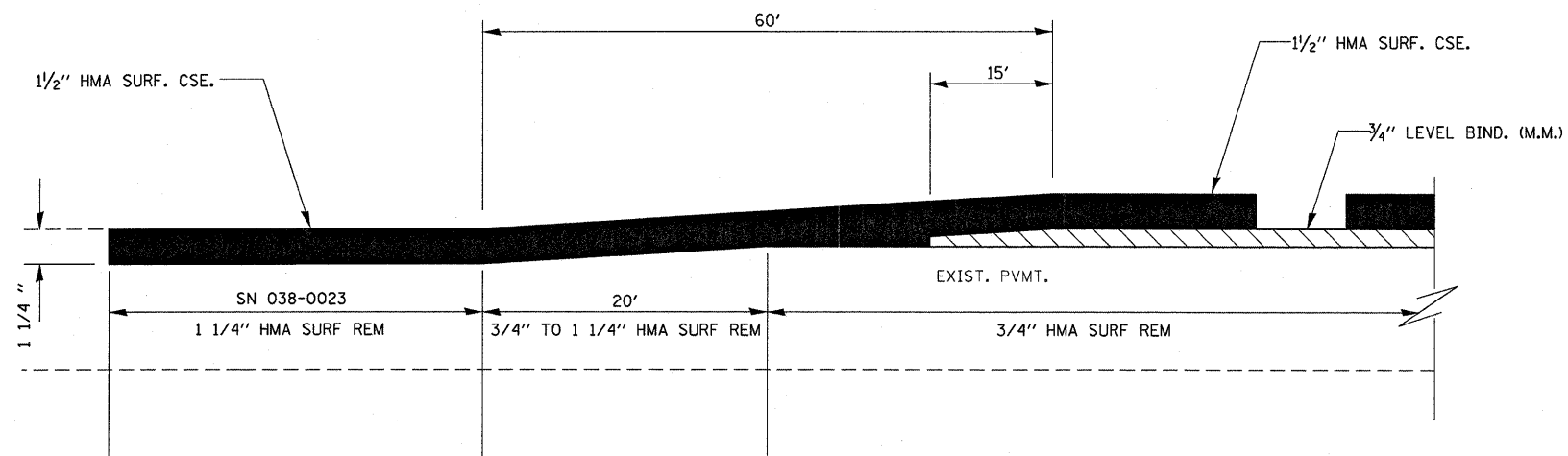


HMA TAPER AT BUTT JOINTS

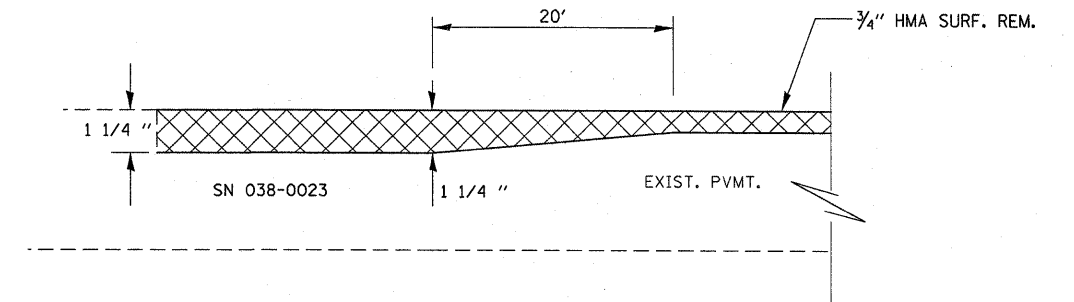
- * STA 1012+05
- * STA 1013+05
- * STA 1338+14.25
- * STA 1338+35.75



HMA SURFACE REMOVAL – BUTT JOINT



TAPER DETAIL AT SN 038-0023



HMA SURFACE REMOVAL TRANSITION AT SN 038-0023

FILE NAME =	USER NAME = carpenterdj	DESIGNED -	REVISD -	STATE OF ILLINOIS DEPARTMENT OF TRANSPORTATION	DETAILS			F.A.P. RTE.	SECTION	COUNTY	TOTAL SHEETS	SHEET NO.
ci:\pw\work\VPWIDOT\CARPENTERDJ\0175591\366643-sht-details.DGN	PLOT SCALE = 50.0000' / IN.	DRAWN -	REVISD -					332	(3, D-1RS-2, (14, 15, 2)RS	IROQUOIS	15	15
PLOT DATE = Jan 25, 2010 - 07:13:14 AM	DATE -	CHECKED -	REVISD -		SCALE: _____ SHEET NO. ___ OF ___ SHEETS STA. _____ TO STA. _____			CONTRACT NO. 66643				
					ILLINOIS FED. AID PROJECT							