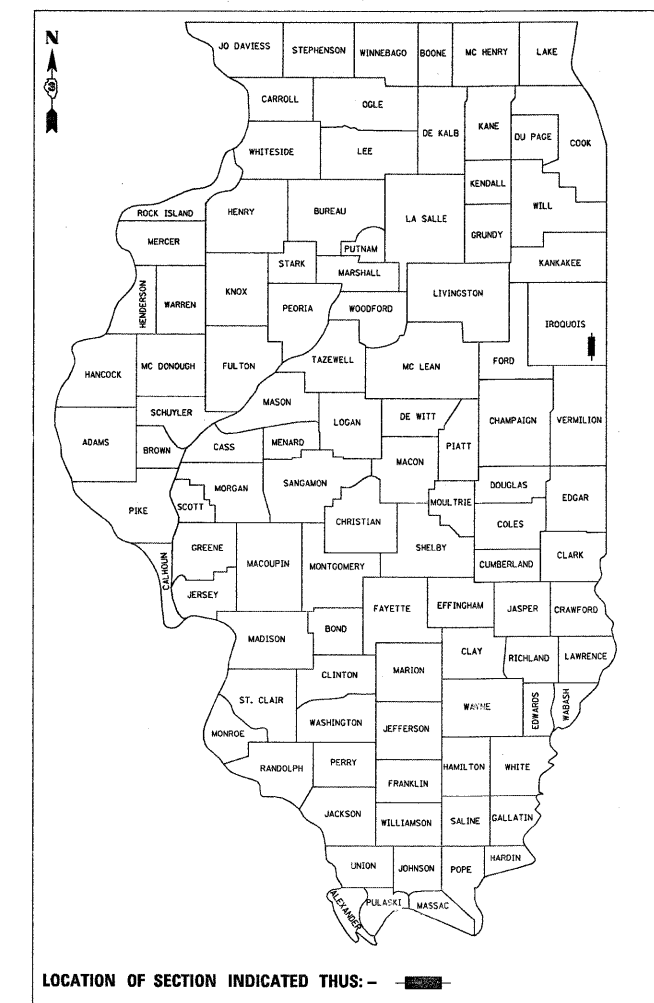


F.A.P. RTE.	SECTION	COUNTY	TOTAL SHEETS	SHEET NO.
332	(2X, 1X, 17, 48X-4)RS-3	IROUOIS	15	1
		ILLINOIS	CONTRACT NO. 66663	

D-93-036-05



FUNCTIONAL CLASSIFICATION
 RURAL OTHER PRICIPAL ARTERIAL
 2010 ADT = 2350
 PV=81% SU=6% MU=13%

STATE OF ILLINOIS
 DEPARTMENT OF TRANSPORTATION
 DIVISION OF HIGHWAYS

SUBMITTED 1128 2010

James F. Ryan
 DEPUTY DIRECTOR OF HIGHWAYS, REGION ENGINEER

March 19, 2010
Scott E. Stiel, P.E.
 Acting ENGINEER OF DESIGN AND ENVIRONMENT

March 19, 2010
Christine M. Reed
 DIRECTOR OF HIGHWAYS, CHIEF ENGINEER

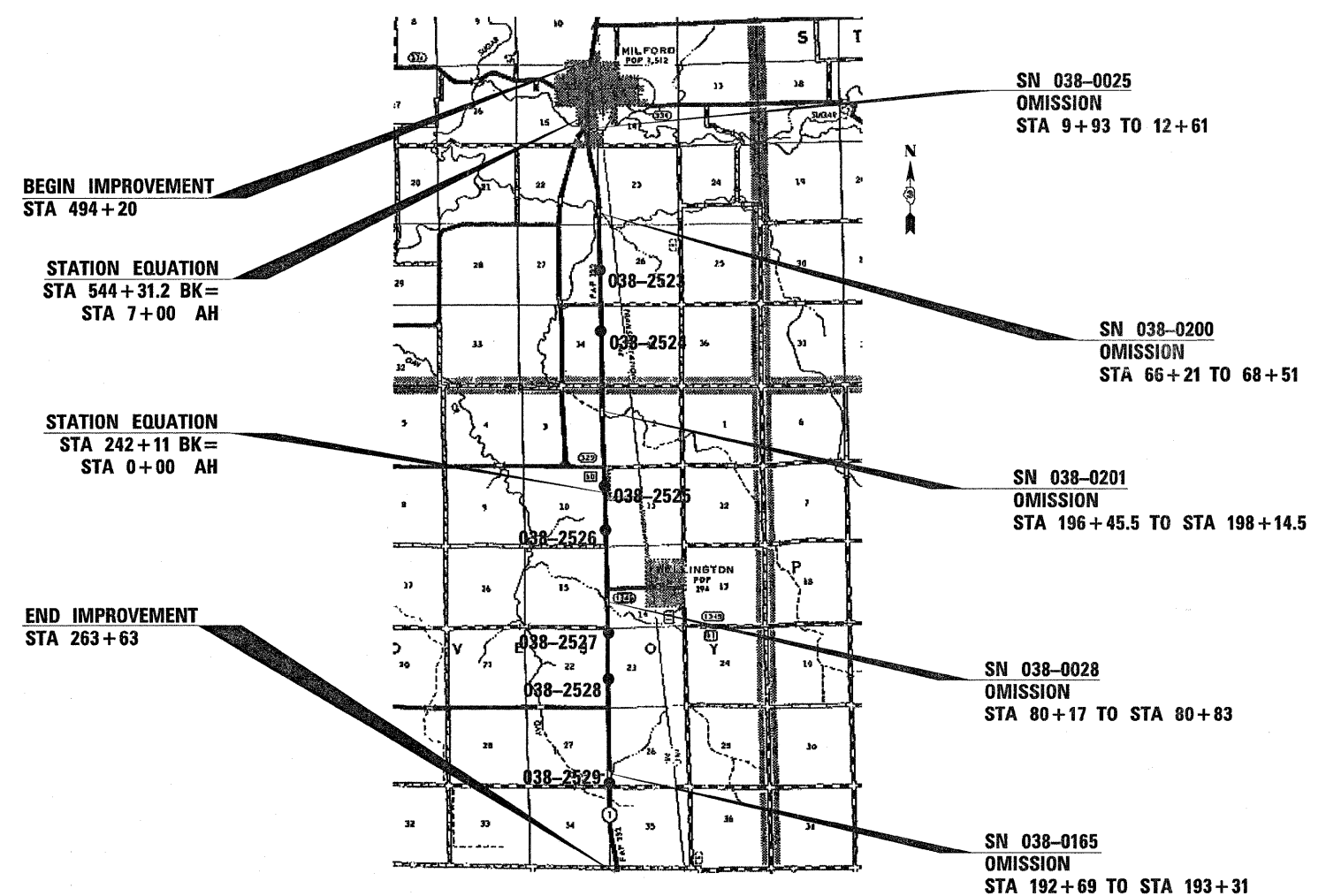
STATE OF ILLINOIS
 DEPARTMENT OF TRANSPORTATION
 DIVISION OF HIGHWAYS

**PROPOSED
 HIGHWAY PLANS**

FAP ROUTE 332 (IL 1)
 SECTION (2X, 1X, 17, 48X-4)RS-3

IROUOIS COUNTY
 C-93-054-05

3P RESURFACING FROM THE NORTH CORPORATE LIMITS
 OF MILFORD TO THE VERMILION COUNTY LINE



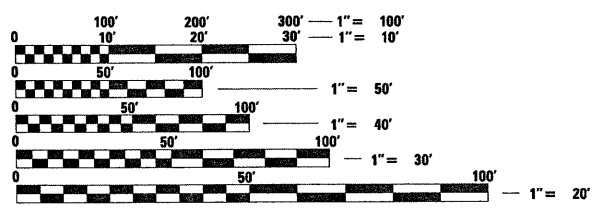
GROSS LENGTH = 54885.2 FT = 10.395 MILE
 NET LENGTH = 54090.2 FT = 10.244 MILE

INDEX OF SHEETS

- 1 COVER SHEET
- 2 GENERAL NOTES
- 3 SUMMARY OF QUANTITIES
- 4 TYPICAL SECTIONS
- 5-7 SCHEDULES
- 8 TIE POINTS
- 9 PROJECT LAYOUT
- 10-15 DETAILS

STANDARDS

- 000001-05 STANDARD SYMBOLS, ABBREVIATIONS AND PATTERNS
- 001006 DECIMAL OF AN INCH AND OF A FOOT
- 406201-01 MAILBOX TURNOUT
- 424001-05 CURB RAMPS FOR SIDEWALK
- 635011-02 REFLECTOR MARKER AND MOUNTING DETAILS
- 635006-03 REFLECTOR AND TERMINAL MARKER PLACEMENT
- 701001-02 OFF-ROAD OPERATIONS 2L, 2W, MORE THAN 15' (4.5 m) AWAY
- 701006-03 OFF-ROAD OPERATIONS 2L, 2W, 15' (4.5 m) TO 24" (600 mm) FROM PAVEMENT EDGE
- 701011-02 OFF-ROAD MOVING OPERATIONS 2L, 2W, DAY ONLY
- 701301-03 LANE CLOSURE, 2L, 2W, SHORT TIME OPERATIONS
- 701306-02 LANE CLOSURE, 2L, 2W, SLOW MOVING OPERATIONS DAY ONLY, FOR SPEEDS ≥ 45 MPH
- 701311-03 LANE CLOSURE, 2L, 2W, MOVING OPERATIONS - DAY ONLY
- 701901-01 TRAFFIC CONTROL DEVICES
- 780001-02 TYPICAL PAVEMENT MARKINGS
- 781001-03 TYPICAL APPLICATIONS RAISED REFLECTIVE PAVEMENT MARKERS
- 667101-01 PERMANENT SURVEY MARKERS



FULL SIZE PLANS HAVE BEEN PREPARED USING STANDARD ENGINEERING SCALES. REDUCED SIZED PLANS WILL NOT CONFORM TO STANDARD SCALES. IN MAKING MEASUREMENTS ON REDUCED PLANS, THE ABOVE SCALES MAY BE USED.

J.U.L.I.E.
 JOINT UTILITY LOCATION INFORMATION FOR EXCAVATION
 1-800-892-0123
 OR 811

PROJECT ENGINEER: JOE KANNEL
 UNIT CHIEF: MICHELE LINDEMANN

CONTRACT NO. 66663

PRINTED BY THE AUTHORITY
 OF THE STATE OF ILLINOIS

GENERAL NOTES

THE THICKNESS OF HMA SHOWN ON THE PLANS IS THE NOMINAL THICKNESS. DEVIATIONS FROM THE NOMINAL THICKNESS WILL BE PERMITTED WHEN SUCH DEVIATIONS OCCUR DUE TO IRREGULARITIES IN THE EXISTING SURFACE OR BASE ON WHICH THE HMA IS PLACED.

THE HMA SURFACE OF ALL MAILBOX TURNOUTS, PRIVATE ENTRANCES, COMMERCIAL ENTRANCES, AND SIDE ROADS SHALL BE MADE NEATLY, IN A WORKMANLIKE MANNER, AND SHALL ACCURATELY CONFORM TO THE SHAPES AND DIMENSIONS SHOWN ON THE PLAN DETAILS. IF REQUIRED BY THE ENGINEER, THE CONTRACTOR SHALL BE REQUIRED TO SAW CUT THE HMA SURFACE TO CONFORM TO THE SHAPES AND DIMENSIONS SHOWN ON THE PLAN DETAILS. THIS WORK SHALL BE INCLUDED IN THE COST OF THE HMA SURFACE.

THE ENGINEER WILL BE THE SOLE JUDGE CONCERNING CURING TIME FOR THE VARIOUS HMA LIFTS.

SEEDING SHALL NOT BE PERMITTED AT ANY TIME WHEN THE GROUND IS FROZEN, WET, OR IN AN UNTILLABLE CONDITION. LOCATIONS TO BE SEEDED WILL BE DETERMINED BY THE ENGINEER.

THE FINISHED EARTHWORK SHALL HAVE A VEGETATION SUSTAINING SOIL COVERING THE TOP FOUR INCHES IN AREAS TO BE SEEDED OR SODDED. THE VEGETATION SUSTAINING SOIL REQUIRED WILL NOT BE PAID FOR SEPARATELY BUT SHALL BE INCLUDED IN THE COST OF FURNISHED EXCAVATION.

ON EXISTING PAVEMENT WHICH MAY BE SUPERELEVATED, THE NEW HMA PAVEMENT SHALL BE BUILT WITH THE SAME SUPERELEVATION UNLESS NEW SUPERELEVATION RATES ARE GIVEN ON THE PLANS.

ALL ELEVATIONS REFERRING TO U.S.G.S. MEAN SEA LEVEL DATUM.

ANY REFERENCE TO A STANDARD IN THESE PLANS SHALL BE INTERPRETED TO MEAN THE EDITION AS INDICATED BY THE SUBNUMBER SHOWN IN THE LIST OF STANDARDS OR THE COPY INCLUDED IN THESE PLANS.

THE FOLLOWING RATES OF APPLICATION HAVE BEEN USED IN CALCULATING PLAN QUANTITIES:

GRANULAR MATERIALS	2.05	TONS / CU YD
BIT MATERIALS (PRIME COAT) ON AGGREGATE BASES	0.375	GAL / SQ YD
BITUMINOUS MATERIALS (PRIME COAT)	0.08	GAL / SQ YD
FOR ADDITIONAL HMA LIFTS "FOG COAT"	0.05	GAL / SQ YD
AGGREGATE PRIME COAT	0.002	TONS / SQ YD
HMA RESURFACING	112	LBS / SQ YD / IN
SHORT TERM PAVEMENT MARKING	10	FT /100 FT OF APPLICATION
MIX FOR CRACKS, JTS & FLGWYS	0.0003	TONS / SQ YD
LEVEL BINDER (HAND METHOD)	0.0005	TONS / SQ YD

THE CONTRACTOR SHALL CONTACT JULIE AT LEAST 48 HOURS PRIOR TO EXCAVATION TO DETERMINE WHICH UTILITIES ARE IN THE AREA.

NOTE:
ALL SOILS DISTURBED BY ANY CONSTRUCTION OPERATION SHALL BE LEFT ON, AND INCORPORATED WITHIN, THE PROJECT LIMITS AND EXSISTING RIGHT OF WAY.

COMMITMENTS

STRUCTURE NO. 038-0165 IS RESTRICTED TO LEGAL LOADS ONLY.

STATE OF ILLINOIS
DEPARTMENT OF TRANSPORTATION
DISTRICT THREE

PREPARED BY: Don Brown
ACTING DISTRICT STUDIES & PLANS ENGINEER

DATE: 1-28-10

EXAMINED BY: Herb Jung
DISTRICT CONSTRUCTION ENGINEER

Wayne Phillips
DISTRICT MATERIALS ENGINEER

Bruce A. Hunter
DISTRICT OPERATIONS ENGINEER

FILE NAME =	USER NAME = carpenterdj	DESIGNED -	REVISED -	STATE OF ILLINOIS DEPARTMENT OF TRANSPORTATION	GENERAL NOTES	F.A.P. RTE.	SECTION	COUNTY	TOTAL SHEETS	SHEET NO.
ct:\pw_work\PIWIDOT\CARPENTERDJ\dms82734\details.dgn	DRAWN -	REVISED -	332			(2X, 1X, 17, 48X-4RS-3	IRROUOIS	15	2	
PLOT SCALE = 50.0000' / IN.	CHECKED -	REVISED -	CONTRACT NO. 66663							
PLOT DATE = Jan 28, 2010 - 10:55:21 AM	DATE -	REVISED -	ILLINOIS FED. AID PROJECT							
					SCALE:	SHEET NO.	OF	SHEETS	STA.	TO STA.

1001.STATE

SUMMARY OF QUANTITIES			
CODE NO.	ITEM	UNIT	1000 ROADWAY
20200100	EARTH EXCAVATION	CU YD	14
20400800	FURNISHED EXCAVATION	CU YD	26
25000200	SEEDING, CLASS 2	ACRE	0.2
25000400	NITROGEN FERTILIZER NUTRIENT	POUND	17
25000500	PHOSPHORUS FERTILIZER NUTRIENT	POUND	17
25000600	POTASSIUM FERTILIZER NUTRIENT	POUND	17
25100630	EROSION CONTROL BLANKET	SQ YD	884
25200110	SODDING, SALT TOLERANT	SQ YD	103
40200800	AGGREGATE SURFACE COURSE, TYPE B	TON	24
40600100	BITUMINOUS MATERIALS (PRIME COAT)	GALLON	22651
40600300	AGGREGATE (PRIME COAT)	TON	703
40600400	MIXTURE FOR CRACKS, JOINTS, AND FLANGEWAYS	TON	52
40600525	LEVELING BINDER (HAND METHOD), N50	TON	87
40600625	LEVELING BINDER (MACHINE METHOD), N50	TON	7001
40600895	CONSTRUCTING TEST STRIP	EACH	1
40600982	HOT-MIX ASPHALT SURFACE REMOVAL - BUTT JOINT	SQ YD	1483
40600990	TEMPORARY RAMP	SQ YD	277
40603310	HOT-MIX ASPHALT SURFACE COURSE, MIX "C", N50	TON	14642
40800050	INCIDENTAL HOT-MIX ASPHALT SURFACING	TON	537
42400100	PORTLAND CEMENT CONCRETE SIDEWALK 4 INCH	SQ FT	744
42400800	DETECTABLE WARNINGS	SQ FT	284
44000152	HOT-MIX ASPHALT SURFACE REMOVAL, 3/4"	SQ YD	156443
44000155	HOT-MIX ASPHALT SURFACE REMOVAL, 1 1/2"	SQ YD	16873
44000500	COMBINATION CURB AND GUTTER REMOVAL	FOOT	118
44000600	SIDEWALK REMOVAL	SQ FT	616
48102100	AGGREGATE WEDGE SHOULDER, TYPE B	TON	1904
60255500	MANHOLES TO BE ADJUSTED	EACH	6
60260100	INLETS TO BE ADJUSTED	EACH	6
60605000	COMBINATION CONCRETE CURB AND GUTTER, TYPE B-6.24	FOOT	118
66700205	PERMANENT SURVEY MARKERS, TYPE 1	EACH	2
67000400	ENGINEER'S FIELD OFFICE, TYPE A	CAL MO	5
67100100	MOBILIZATION	L SUM	1
70100460	TRAFFIC CONTROL AND PROTECTION, STANDARD 701306	L SUM	1

1001.STATE

SUMMARY OF QUANTITIES (CONTINUED)			
CODE NO.	ITEM	UNIT	1000 ROADWAY
70300100	SHORT-TERM PAVEMENT MARKING	FOOT	16483
70300220	TEMPORARY PAVEMENT MARKING - LINE 4"	FOOT	103361
70300240	TEMPORARY PAVEMENT MARKING - LINE 6"	FOOT	14117
70300260	TEMPORARY PAVEMENT MARKING - LINE 12"	FOOT	91
70301000	WORK ZONE PAVEMENT MARKING REMOVAL	SQ FT	1830
* 78001110	PAINT PAVEMENT MARKING-LINE 4"	FOOT	208722
* 78001130	PAINT PAVEMENT MARKING-LINE 6"	FOOT	28234
* 78001150	PAINT PAVEMENT MARKING - LINE 12"	FOOT	182
* 78100100	RAISED REFLECTIVE PAVEMENT MARKER	EACH	687
* 78200410	GUARDRAIL MARKERS, TYPE A	EACH	72
* 78201000	TERMINAL MARKER - DIRECT APPLIED	EACH	20
78300200	RAISED REFLECTIVE PAVEMENT MARKER REMOVAL	EACH	687
X0322729	MATERIAL TRANSFER DEVICE	TON	14642
Z0021700	EXPANSION JOINT REHABILITATION	FOOT	551

* SPECIALTY ITEMS

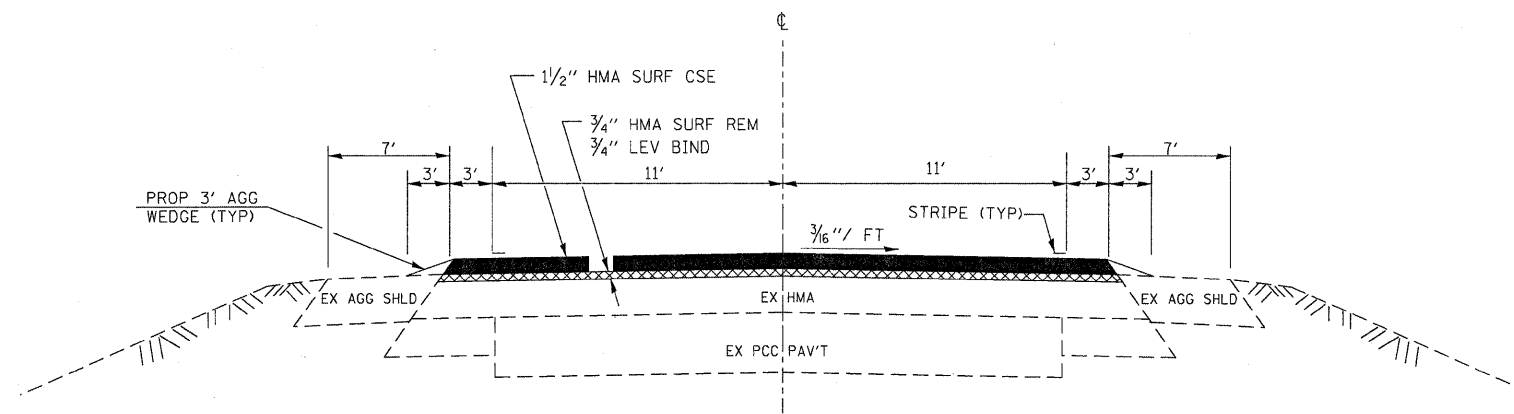
FILE NAME = c:\pw_work\VPWIDOT\CARPENTERJ\dms82734

USER NAME = carpenterdj	DESIGNED -	REVISED -
details.dgn	DRAWN -	REVISED -
PLOT SCALE = 50.0000' / IN.	CHECKED -	REVISED -
	DATE	REVISION

STATE OF ILLINOIS
DEPARTMENT OF TRANSPORTATION

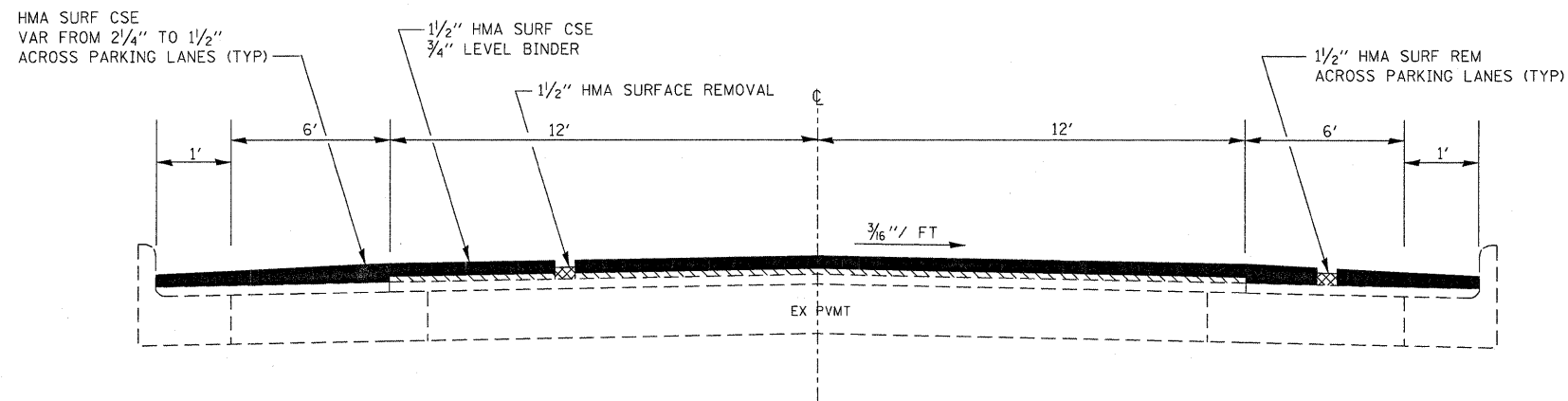
SUMMARY OF QUANTITIES

F.A.P. RTE.	SECTION	COUNTY	TOTAL SHEETS	SHEET NO.
332	(2X, 1X, 17, 48X-4RS-3	IRROUOIS	15	3
			CONTRACT NO. 66663	



TYPICAL SECTION

STA 494+20 TO STA 507+50
STA 12+61 TO STA 263+63



TYPICAL SECTION

STA 507+25 TO STA 544+31.2
STA 7+00 TO 9+93

STATION EQUATIONS
544+31.2 BK = 7+00 AH
242+11 BK = 0+00 AH

STATION EQUATIONS
STA 9+93 TO STA 12+61
STA 66+21 TO STA 68+51
STA 196+45.5 TO STA 198+14.5
STA 80+17 TO STA 80+83

MIX DESIGN

MIX	PG GRADE	DESIGN AIR VOIDS	MIX COMPOSITION	FRICTION AGG	DENSITY CONTROL
HMA SURFACE	PG 64-22	4.0% @N50	IL 12.5 OR IL 9.5	MIXTURE C	CORRELATION
HMA LEVEL BINDER	PG 64-22	4.0% @N50	IL 9.5		SATISFACTION OF THE ENGINEER

IF RAP OPTION IS SELECTED, THE ASPHALT CEMENT GRADE MAY NEED TO BE ADJUSTED. THIS WILL BE DETERMINED BY THE ENGINEER

FILE NAME =	USER NAME = carpentardj	DESIGNED -	REVISED -
ct:\pw\work\VPWIDOT\CARPENTERD\j\dms82734\details.dgn		DRAWN -	REVISED -
PLOT SCALE = 50.0000' / IN.		CHECKED -	REVISED -
PLOT DATE = Jan 28, 2010 - 10:54:41 AM		DATE -	REVISED -

**STATE OF ILLINOIS
DEPARTMENT OF TRANSPORTATION**

TYPICAL SECTIONS

SCALE: SHEET NO. OF SHEETS STA. TO STA.

F.A.P. RTE.	SECTION	COUNTY	TOTAL SHEETS	SHEET NO.
332	(2X, 1X, 17, 48X-4)RS-3	IROQUOIS	15	4
CONTRACT NO. 66663			ILLINOIS FED. AID PROJECT	

RESURFACING SCHEDULE														
LOCATION		LENGTH	PVMT AREA	HMA SURF CSE	LEVEL BINDER (MM)	HMA SURF REM 3/4"	HMA SURF REM 1-1/2"	HMA SURF REM (BUTT JT)	TEMP RAMP	BIT MAT (PR CT)	AGG (PR CT)	MIX FOR CRACKS, JOINTS & FLGWYS	LEVEL BINDER (HM)	AGG WEDGE SHLD TY B
STA TO STA		FOOT	SQ YD	TON	TON	SQ YD	SQ YD	SQ YD	SQ YD	GALLON	TON	TON	TON	TON
494+20 TO 494+50	BUTT JOINT MILLING	30	93.3	7.8	3.9			93.3	15.6	12	0.4	0.03	0.05	1.1
494+50 TO 507+20		1270	3951.1	331.9	165.9	3951.1				514	15.8	1.19	1.98	48.2
507+20 TO 507+50	MILLING TRANSITION	30	93.3	7.8	3.9		93.3			12	0.4	0.03	0.05	1.1
507+50 to 544+31.2 BK	CURB & GUTTER	3681.2	15542.8	1425.8	412.3	15542.8				1734	62.2	4.66	7.77	
7+00 AH TO 9+93	CURB & GUTTER	293	1237.1	103.9	32.8		1237.1		15.6	138	4.9	0.37	0.62	
9+93 TO 12+61	SN 038-0025 OMISSION	268												
12+61 TO 12+91	BUTT JOINT MILLING	30	93.3	7.8	3.9			93.3	15.6	12	0.4	0.03	0.05	1.1
12+91 TO 65+91		5300	16488.9	1385.1	692.5	16488.9				2144	66.0	4.95	8.24	201.2
65+91 TO 66+21	BUTT JOINT MILLING	30	93.3	7.8	3.9			93.3	15.6	12	0.4	0.03	0.05	1.1
66+21 TO 68+51	SN 038-0200 OMISSION	230												
68+51 TO 68+81	BUTT JOINT MILLING	30	93.3	7.8	3.9			93.3	15.6	12	0.4	0.03	0.05	1.1
68+81 TO 196+15.5		12734.5	39618.4	3327.9	1664.0	39618.4				5150	158.5	11.89	19.81	483.4
196+15.5 TO 196+45.5	BUTT JOINT MILLING	30	93.3	7.8	3.9			93.3	15.6	12	0.4	0.03	0.05	1.1
196+45.5 TO 198+14.5	SN 038-0201 OMISSION	169												
198+14.5 TO 198+44.5	BUTT JOINT MILLING	30	93.3	7.8	3.9			93.3	15.6	12	0.4	0.03	0.05	1.1
198+44.5 TO 242+11 BK		4366.5	13584.7	1141.1	570.6	13584.7				1766	54.3	4.08	6.79	165.8
0+00 AH TO 79+87		7987	24848.4	2087.3	1043.6	24848.4				3230	99.4	7.45	12.42	303.2
79+87 TO 80+17	BUTT JOINT MILLING	30	93.3	7.8	3.9			93.3	15.6	12	0.4	0.03	0.05	1.1
80+17 TO 80+83	SN 038-0028 OMISSION	66												
80+83 TO 81+13	BUTT JOINT MILLING	30	93.3	7.8	3.9			93.3	15.6	12	0.4	0.03	0.05	1.1
81+13 TO 192+39		11126	34614.2	2907.6	1453.8	34614.2				4500	138.5	10.38	17.31	422.4
192+39 TO 192+69	BUTT JOINT MILLING	30	93.3	7.8	3.9			93.3	15.6	12	0.4	0.03	0.05	1.1
192+69 TO 193+31	SN 038-0165 OMISSION	62												
193+31 TO 193+61	BUTT JOINT MILLING	30	93.3	7.8	3.9			93.3	15.6	12	0.4	0.03	0.05	1.1
193+61 TO 263+93		7032	21877.3	1837.7	918.8	21877.3				2844	87.5	6.56	10.94	267
263+93 TO 264+23	BUTT JOINT MILLING	30	93.3	7.8	3.9			93.3	15.6	12	0.4	0.03	0.05	1.1
TOTAL				14641.9	7001.1	154983.0	16873.2	1026.3	187.2	22164.0	691.9	51.9	86.5	1904.4

SEEDING SCHEDULE								
SIDEROAD OR DESCRIPTION	STATION	SIDE	SEEDING	FURN	EROSION	NIT	PHOS	POT
			CL 2	EXC	CONTROL	FERT	FERT	FERT
			ACRE	CU YD	BLANKET	NUT	NUT	NUT
					SQ YD	LB	LB	LB
MCKINLEY	505+94	RT	0.01	1.5	52	0.9	0.9	0.9
900N	22+70	RT	0.01	1.5	52	0.9	0.9	0.9
900N	22+70	LT	0.01	1.5	52	0.9	0.9	0.9
700N	128+30	LT	0.01	1.5	52	0.9	0.9	0.9
700N	128+30	RT	0.01	1.5	52	0.9	0.9	0.9
600N	181+10	RT	0.01	1.5	52	0.9	0.9	0.9
600N	181+10	LT	0.01	1.5	52	0.9	0.9	0.9
500N	233+90	RT	0.01	1.5	52	0.9	0.9	0.9
500S	233+90	LT	0.01	1.5	52	0.9	0.9	0.9
400S	45+53	RT	0.01	1.5	52	0.9	0.9	0.9
350S	71+99	LT	0.01	1.5	52	0.9	0.9	0.9
300N	98+49	RT	0.01	1.5	52	0.9	0.9	0.9
200N	151+00	RT	0.01	1.5	52	0.9	0.9	0.9
100N	203+50	LT	0.01	1.5	52	0.9	0.9	0.9
100N	203+50	RT	0.01	1.5	52	0.9	0.9	0.9
000 S	262+98	LT	0.01	1.5	52	0.9	0.9	0.9
000 N	262+98	RT	0.01	1.5	52	0.9	0.9	0.9
TOTAL			0.17	25.5	884	15.3	15.3	15.3

EXPANSION JT REHAB	
LOCATION	LENGTH
STA	FOOT
8+56	29
18+19	29
18+52	29
64+18.5	29
65+24.5	29
65+31.5	29
69+44.5	29
69+53.5	29
195+17.5	29
195+76.5	29
199+01.5	29
79+98.5	29
80+17	29
80+83	29
81+45.5	29
192+21.5	29
192+77.5	29
193+62.5	29
194+24.5	29
TOTALS	551

GUARDRAIL		
STRUCTURE	GUARDRAIL MARKERS	TERMINAL MARKERS DIRECT APPLIED
	EACH	EACH
038-0025	8	4
038-0200	8	4
038-0201	16	4
038-0028	12	4
038-0165	8	4
TOTALS	72	20

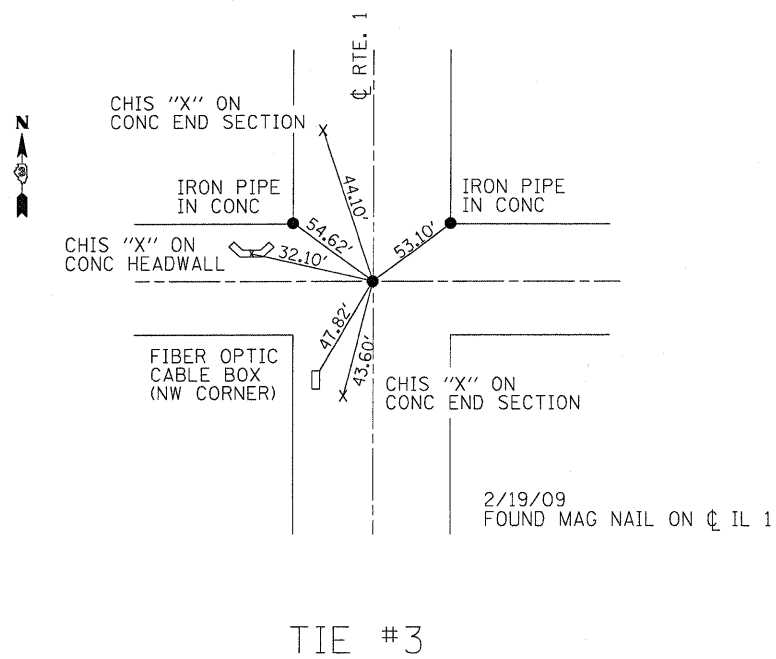
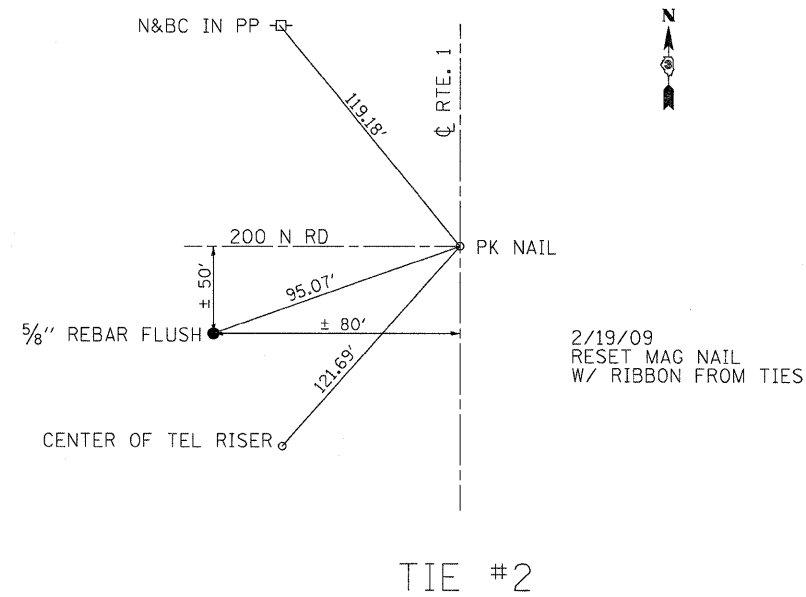
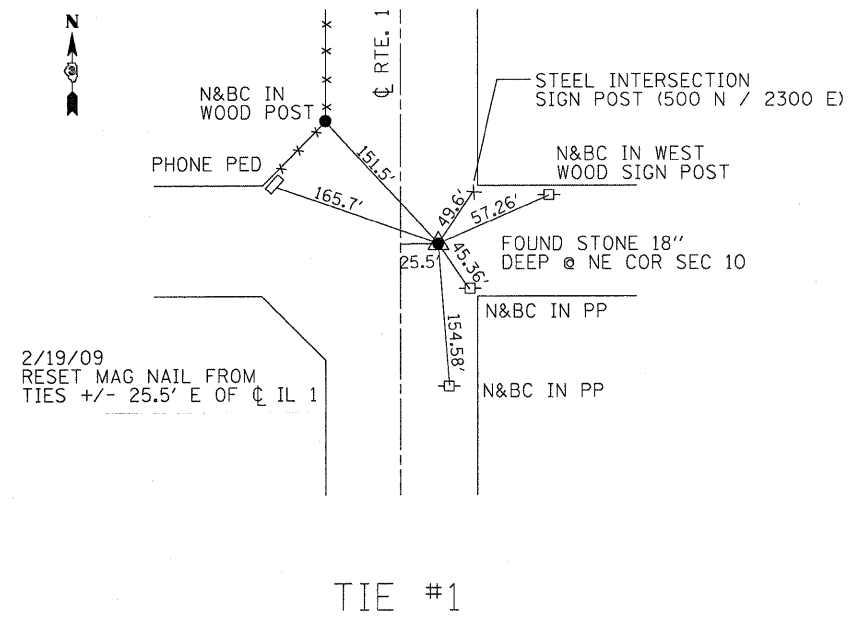
SIDEROAD SCHEDULE												
LOCATION		DESCRIPTION	TYPE	WIDTH (END)	AREA	BIT MATLS (PR CT)	AGG (PR CT)	INC HMA SURF	HMA SURF REM 3/4"	HMA SURF REM BUTT JT	AGG SURF CSE	TEMP RAMP
				FOOT	SQ YD	GAL	TON	TON	SQ YD	SQ YD	TON	SQ YD
494+48	LT	CE	HMA	24	37.8	3.0	0.1	4.8	27.1	10.7		
494+66	RT	CE	HMA/AGG	20	33.3	2.7	0.1	4.2	33.3		0.9	
495+12	LT	CE	HMA/AGG	24	37.8	3.0	0.1	4.8	37.8		1.1	
496+45	LT	CE	HMA/AGG	20	33.3	2.7	0.1	4.2	33.3		0.9	
497+89	LT	CE	HMA/AGG	24	37.8	3.0	0.1	4.8	37.8		1.1	
497+93	RT	CE	HMA/AGG	24	37.8	3.0	0.1	4.8	37.8		1.1	
500+65	LT	CE	HMA	36	51.1	4.1	0.1	6.4	35.1	16.0		
503+33	LT	CE	HMA	38	53.3	4.3	0.1	6.7	36.4	16.9		
505+74	LT	CE	HMA	24	37.8	3.0	0.1	4.8	27.1	10.7		
505+94	RT	MCKINLEY	A-3	31	146.3	11.7	0.3	12.3				
507+17	LT	CE	HMA/AGG	20	33.3	2.7	0.1	4.2	33.3		0.9	
507+17	RT	CE	HMA	20	33.3	2.7	0.1	4.2	24.4	8.9		
507+87	LT	HENKE ST	A-3	15	93.0	7.4	0.2	7.8				
507+87	RT	HENKE ST	A-3	17	99.6	8.0	0.2	8.4				
514+62	LT	FREDERICK ST	A-3	22	116.3	9.3	0.2	9.8				
518+55	RT	IRVING ST	A-3	23	119.6	9.6	0.2	10.0				
522+58	LT	JONES ST	HMA	44	189.6	15.2	0.4	23.9	91.8	97.8		24.4
522+58	RT	JONES ST	HMA	35	159.6	12.8	0.3	20.1	81.8	77.8		19.4
526+57	LT	LYLE ST	A-3	31	146.3	11.7	0.3	12.3				
530+59	LT	ASHFORD ST	A-3	19	106.3	8.5	0.2	8.9				
530+59	RT	ASHFORD ST	A-3	31	146.3	11.7	0.3	12.3				
534+54	LT	HICKORY ST	A-3	21	113.0	9.0	0.2	9.5				
534+54	RT	HICKORY ST	A-3	23	119.6	9.6	0.2	10.0				
537+34	LT	CHESTNUT ST	A-3	30	143.0	11.4	0.3	12.0				
537+34	RT	CHESTNUT ST	A-3	23	119.6	9.6	0.2	10.0				
540+17	LT	MAIN ST	A-3	31	146.3	11.7	0.3	12.3				
540+17	RT	MAIN ST	A-3	33	153.0	12.2	0.3	12.9				
543+03	LT	PINE ST	A-3	23	119.6	9.6	0.2	10.0				
543+03	RT	PINE ST	A-3	19	106.3	8.5	0.2	8.9				
20+57	LT	CE	HMA/AGG	18	31.1	2.5	0.1	3.9	31.1		0.9	
22+70	RT	900N	A-3	24	123.0	9.8	0.2	10.3				
22+70	LT	900N	A-3	22	116.3	9.3	0.2	9.8				
28+77	LT	PE	HMA/AGG	24	37.8	3.0	0.1	4.8	37.8		1.1	
29+14	LT	CE	HMA/AGG	35	50.0	4.0	0.1	6.3	50.0		1.7	
31+08	LT	CE	HMA/AGG	18	31.1	2.5	0.1	3.9	31.1		0.9	
32+49	LT	PE	HMA/AGG	12	24.4	2.0	0.0	3.1	24.4		0.6	
34+79	LT	PE	HMA/AGG	15	27.8	2.2	0.1	3.5	27.8		0.7	
128+30	LT	700N	A-3	21	113.0	9.0	0.2	9.5				
128+30	RT	700N	AGG	18	103.0	38.6	0.2	13.0	103.0		1.7	
181+10	RT	600N	AGG	14	89.6	33.6	0.2	11.3	89.6		1.3	
181+10	LT	600N	A-3	18	103.0	8.2	0.2	8.7				
212+53	LT	REST AREA	HMA	40	55.6	4.4	0.1	7.0	37.8	17.8		
214+53	LT	REST AREA	HMA	40	55.6	4.4	0.1	7.0	37.8	17.8		
233+90	RT	500N	HMA	41	179.6	14.4	0.4	22.6	86.5	91.1		22.8
233+90	LT	500S	A-3	24	123.0	9.8	0.2	10.3				
45+53	RT	400S	AGG	19	106.3	8.5	0.2	8.9			1.8	
71+99	LT	350S	HMA	41	179.6	14.4	0.4	22.6	86.5	91.1		22.8
98+49	RT	300N	A-3	37	166.3	13.3	0.3	14.0				
135+35	RT	MBTO	HMA	35	35	2.8	0.1	4.4	35.0			
135+35	LT	PE	HMA/AGG	15	27.8	2.2	0.1	3.5	27.8		0.7	
151+00	RT	200N	A-3	35	159.6	12.8	0.3	13.4				
153+36	LT	PE WMBTO	HMA/AGG	15	51	4.1	0.1	6.4	51.0		0.7	
161+14	RT	PE	HMA/AGG	15	27.8	2.2	0.1	3.5	27.8		0.7	
138+41	RT	PE	HMA/AGG	15	27.8	2.2	0.1	3.5	27.8		0.7	
201+73	RT	PE WMBTO	HMA/AGG	15	51	4.1	0.1	6.4	51.0		0.7	
203+50	LT	100N	A-3	25	126.3	10.1	0.3	10.6				
203+50	RT	100N	A-3	24	123.0	9.8	0.2	10.3				
226+89	RT	PE	HMA/AGG	15	27.8	2.2	0.1	3.5	27.8		0.7	
250+87	RT	PE	HMA/AGG	15	27.8	2.2	0.1	3.5	27.8		0.7	
262+98	LT	000 S	AGG	19	106.3	8.5	0.2	13.4			2.7	
262+98	RT	000 N	A-3	19	106.3	8.5	0.2	8.9				
						487.3	11.1	537.1	1460.4	456.6	24.3	89.4

SIDEWALK SCHEDULE FOR NEW RAMP INSTALLATION											
LOCATION	ADA RAMP METHOD	PCC SIDEWALK 4" SQ FT	DETECTABLE WARNINGS SQ FT	CCC&G FT	SIDEWALK REMOVAL SQ FT	CC&G REM FOOT	SOD SALT TOLERANT SQ YD	NIT FERT NUT LB	PHOS FERT NUT LB	POT FERT NUT LB	EARTH EXC CU YD
FREDERICK ST:											
NE QUAD (CROSSING TO WEST)	METHOD 1	8	8		8						
NE QUAD (NEW CROSSING TO SOUTH)	METHOD 1	68	8	12		12	15	0.2	0.2	0.2	1.7
SE QUAD	METHOD 1	40	8	12	40	12	9	0.1	0.1	0.1	1
NW (NEW CROSSING TO EAST)	METHOD 1	68	8	12		12	15	0.2	0.2	0.2	1.7
IRVING ST:											
NE QUAD	METHOD 4	8	8		8						
SE QUAD	METHOD 6	64	12	16	64	16	10	0.1	0.1	0.1	1.7
JONES ST:											
NE QUAD	METHOD 6	16	16		16						
SE QUAD	METHOD 6	16	16		16						
LYLE ST:											
NE QUAD	METHOD 1	16	16		16						
SE QUAD	METHOD 1	8	16		16						
NW QUAD	METHOD 1	16	16		16						
ASHFORD ST:											
NE QUAD	METHOD 1	8	8		8						
SE QUAD	METHOD 1	16	16		16						
SW QUAD (NEW CROSSING TO EAST)	METHOD 1	64	8	12	64	12	18	0.2	0.2	0.2	1.6
HICKORY ST:											
NE QUAD	METHOD 6	8	8		8						
SE QUAD	METHOD 1	8	8		8						
NW QUAD	METHOD 1	8	8		8						
SW QUAD	METHOD 1	8	8		8						
CHESTNUT ST:											
NE QUAD	METHOD 1	8	8		8						
SE QUAD	METHOD 1	8	8		8						
NW QUAD	METHOD 1	8	8		8						
SW QUAD	METHOD 1	8	8		8						
MAIN ST:											
NE QUAD	METHOD 1	8	8		8						
SE QUAD	METHOD 1	8	8		8						
NW QUAD	METHOD 1	8	8		8						
PINE ST:											
NE QUAD	METHOD 1	60	8	12	60	12	9	0.1	0.1	0.1	1.5
SE QUAD	METHOD 1	60	8	13	60	13	9	0.1	0.1	0.1	1.5
NW QUAD	METHOD 1	60	8	14	60	14	9	0.1	0.1	0.1	1.5
SW QUAD	METHOD 1	60	8	15	60	15	9	0.1	0.1	0.1	1.5
TOTAL		744	284	118	616	118	103	1.2	1.2	1.2	13.7

PAVEMENT MARKING SCHEDULE													
LOCATION	LENGTH	PAINT PAVEMENT MARKING 4"		PAINT PVMT MARK 6"	PAINT PVMT MARK 12"	TEMPORARY PAVEMENT MARKING 4"		TEMP PVMT MARK 6"	TEMP PVMT MARK 12"	RAISED REFLECT PVMT MARK REM EACH	RAISED REFLECT PVMT MARK EACH	SHORT TERM PVMT MARK FOOT	WORK ZONE PVMT MARK REM SQ FT
		WHITE FOOT	YELLOW FOOT	YELLOW FOOT	WHITE FOOT	WHITE FOOT	YELLOW FOOT	YELLOW FOOT	WHITE FOOT				
494+20 TO 507+50	1330	5320	1666	666		2660	833	333		17	17	399	44
507+50 TO 544+31.2 BK	3681.2			1840				920		46	46	1104	123
7+00 AH TO 242+11 BK	23511	94044		11756		47022		5878		294	294	7053	783
0+00 AH = 264+23	26423	105692		13212		52846		6606		330	330	7927	880
JONES ST CROSSWALK				608				304					
LYLE ST CROSSWALK				152	182			76	91				
SUBTOTAL		205056	1666	28234	182	102528	833	14117	91	687	687	16483	1830
PROJECT TOTAL			206722	28234	182		103361	14117	91	687	687	16483	1830

THE PERMANENT PAVEMENT MARKING SHALL BE APPLIED TWICE TO INCREASE THE THICKNESS. ADDITIONAL QUANTITY HAS BEEN INCLUDED.

FILE NAME =	USER NAME = carpenterdj	DESIGNED -	REVISED -	STATE OF ILLINOIS DEPARTMENT OF TRANSPORTATION	SCHEDULES				F.A.P. RTE.	SECTION	COUNTY	TOTAL SHEETS	SHEET NO.
ca\pwwork\PWIDOT\CARPENTERJ\dms82734\dets.dgn	DRAWN -	REVISED -	332						(2X, 1X, 17, 48X-4)RS-3	IROQUOIS	15	7	
PLOT SCALE = 50.0000' / IN.	CHECKED -	REVISED -	CONTRACT NO. 66663										
PLOT DATE = Jan 28, 2010 - 10:54:16 AM	DATE -	REVISED -	ILLINOIS FED. AID PROJECT										
SCALE:					SHEET NO. OF SHEETS STA. TO STA.								



	STATION	DESCRIPTION	EXIST MONUMENT TYPE	PROP MONUMENT TYPE	MONUMENT RECORD TO BE RECORDED	RESPONSIBILITY
TIE #1	N/A	NE COR SEC 10 T24N R12W (MONUMENT RECORD)	MAG NAIL	TYPE 1 PLAQUE	YES	2
TIE #2	N/A	NW COR SEC 28 T24N R12W (NON-VERIFIED MONUMENT)	PK NAIL	PK NAIL	NO	1
TIE #3	N/A	SE COR SEC 34 T25N R12W (MONUMENT RECORD)	MAG NAIL	TYPE 1 PLAQUE	YES	2

NOTE: FOR ALL MONUMENT LOCATIONS, SEE TIE SKETCHES

- 1) RESIDENT TO RE-ESTABLISH MONUMENT
- 2) RESIDENT TO RE-ESTABLISH MONUMENT AND FURNISH TIE SKETCHES TO D-3 PLATS AND PLANS
- 3) PROFESSIONAL LAND SURVEYOR TO RE-ESTABLISH MONUMENT, RECORD NEW MONUMENT RECORD AND PROVIDE COPY TO D-3 PLATS AND PLANS (PAY ITEM REQUIRED)

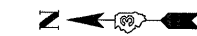
FILE NAME =	USER NAME = carpenterdj	DESIGNED -	REVISED -
ca:\pwork\p\WIDOT\CARPENTERJ\dms82734	details.dgn	DRAWN -	REVISED -
	PLOT SCALE = 50.0000' / IN.	CHECKED -	REVISED -
	PLOT DATE = Jan 28, 2010 - 10:54:08 AM	DATE -	REVISED -

STATE OF ILLINOIS
DEPARTMENT OF TRANSPORTATION

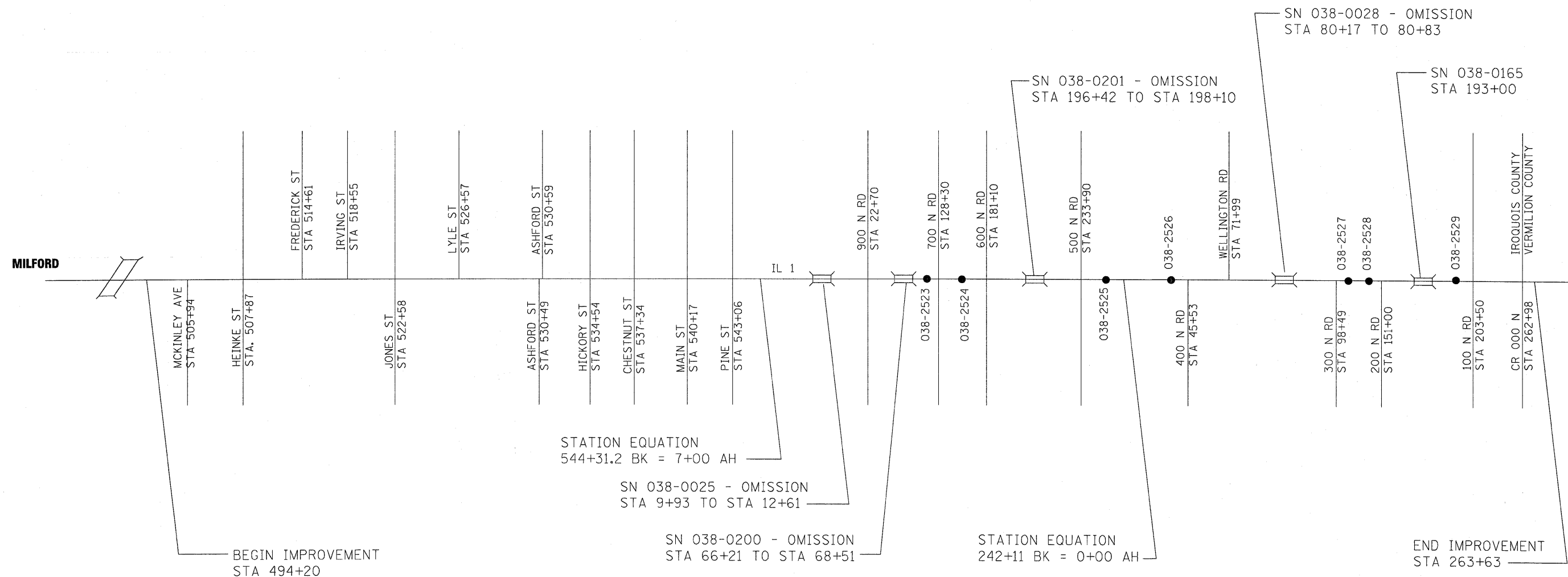
TIE POINTS

SCALE: SHEET NO. OF SHEETS STA. TO STA.

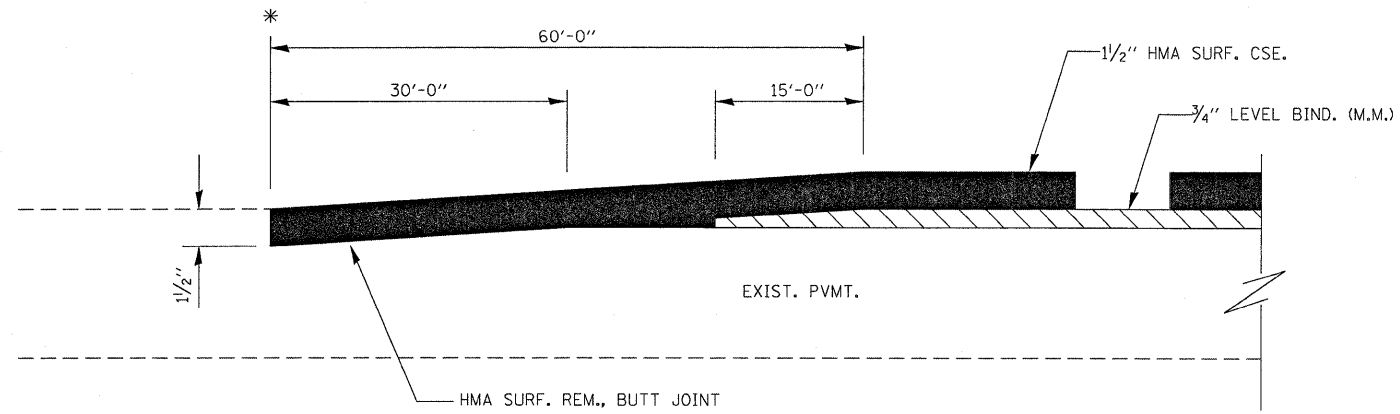
F.A.P. RTE.	SECTION	COUNTY	TOTAL SHEETS	SHEET NO.
332	(2X, 1X, 17, 48X-4)RS-3	IROQUOIS	15	8
CONTRACT NO. 66663				
ILLINOIS FED. AID PROJECT				



NOT TO SCALE

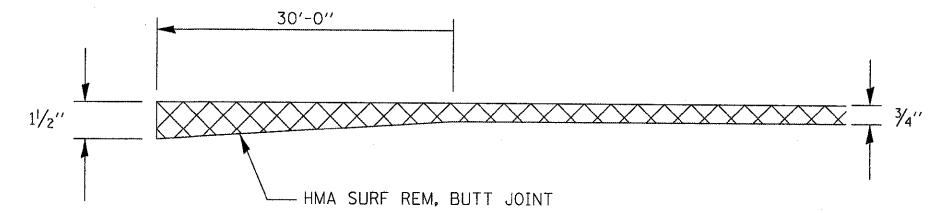


FILE NAME = c:\pw_work\PW\DOT\CARPENTERJ\dms82734\details.dgn	USER NAME = carpenterdj	DESIGNED -	REVISED -	STATE OF ILLINOIS DEPARTMENT OF TRANSPORTATION	PROJECT LAYOUT MAP			F.A.P. RTE.	SECTION	COUNTY	TOTAL SHEETS	SHEET NO.
	PLOT SCALE = 50.0000' / IN.	CHECKED -	REVISED -					332	(2X, 1X, 17, 48X-4)RS-3	IROQUOIS	15	9
	PLOT DATE = Jan 28, 2010 - 10:53:59 AM	DATE -	REVISED -					CONTRACT NO. 66663				
					SCALE:	SHEET NO.	OF	SHEETS	STA.	TO STA.		
ILLINOIS FED. AID PROJECT												

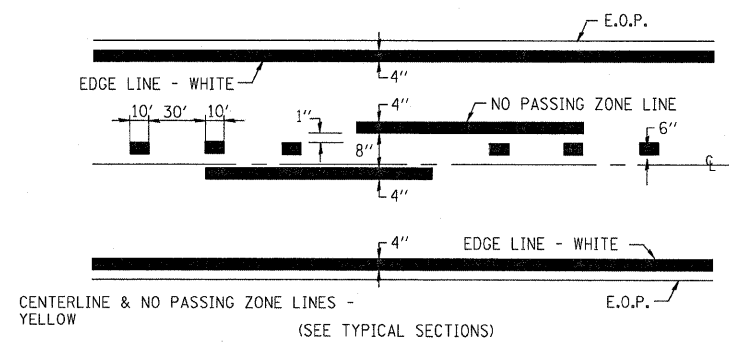


HMA TAPER AT BUTT JOINTS

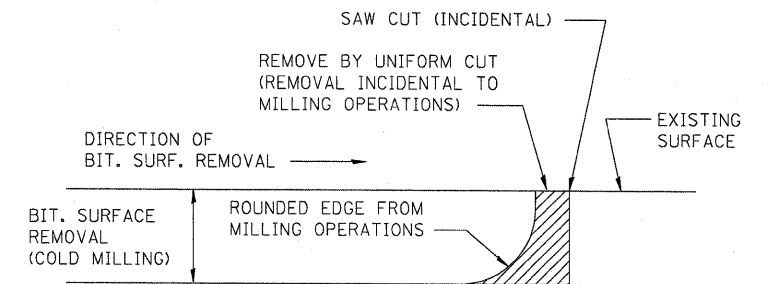
- * STA 494+20
- * STA 12+61
- * STA 66+21
- * STA 68+51
- * STA 196+45.5
- * STA 198+14.5
- * STA 80+17
- * STA 80+83
- * STA 264+23



HMA SURFACE REMOVAL - BUTT JOINT



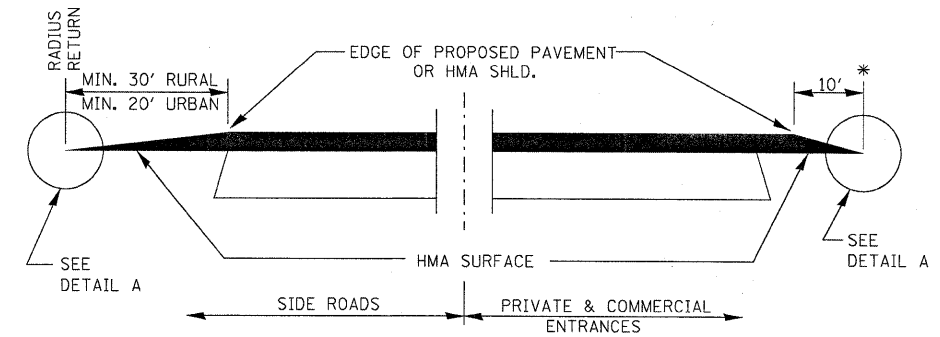
PAVEMENT MARKING



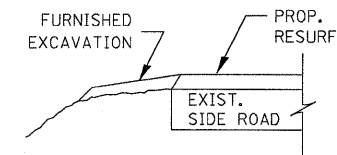
NOTE: WHEN MILLING OPERATIONS PRODUCE A ROUNDED EDGE, THEN A SAW CUT SHALL BE USED TO MANUFACTURE A PERPENDICULAR EDGE AS SHOWN IN THE DETAIL. THE ENGINEER SHALL BE THE SOLE JUDGE CONCERNING THE USE OF THIS DETAIL

BITUMINOUS DETAIL AT BUTT JOINTS

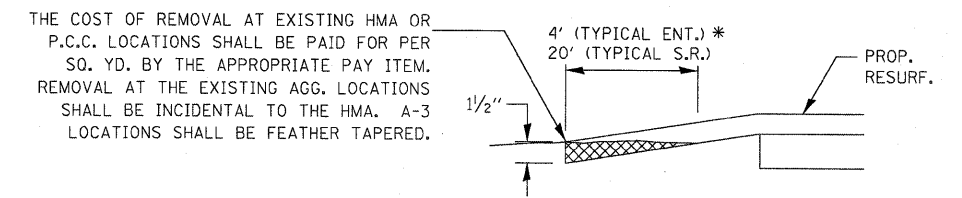
FILE NAME =	USER NAME = carpenterdj	DESIGNED -	REVISED -	STATE OF ILLINOIS DEPARTMENT OF TRANSPORTATION	DETAILS	F.A.P. RTE.	SECTION	COUNTY	TOTAL SHEETS	SHEET NO.	
c:\pwork\PWIDOT\CARPENTERDJ\dms82734	details.dgn	DRAWN -	REVISED -			332	(2X, 1X, 17, 48X-4RS-3	IROUOJUIS	15	10	
	PLOT SCALE = 50.0000' / IN.	CHECKED -	REVISED -			CONTRACT NO. 66663					
	PLOT DATE = Jan 28, 2010 - 10:53:49 AM	DATE -	REVISED -			ILLINOIS FED. AID PROJECT					
					SCALE:	SHEET NO.	OF	SHEETS	STA.	TO STA.	



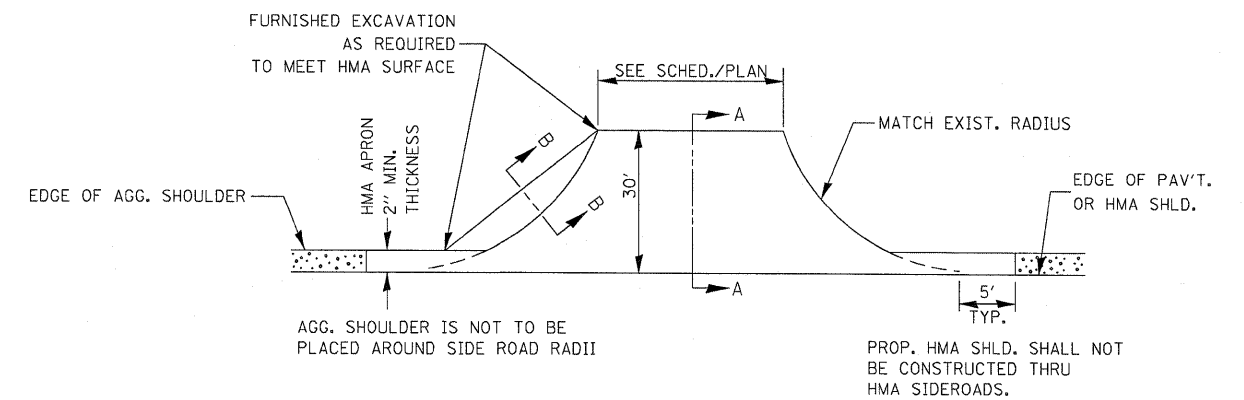
SECTION A-A
DETAILS AT ENTRANCES & SIDE ROADS



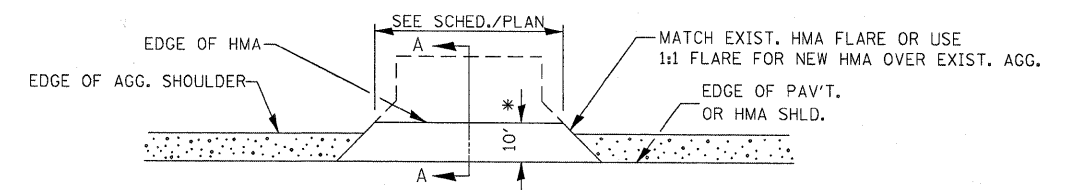
SECTION B-B



DETAIL A



PLAN AT SIDE ROADS

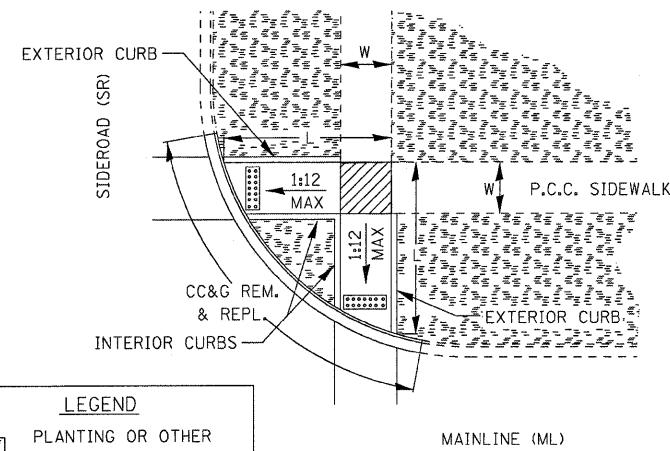


PLAN AT PRIVATE & COMMERCIAL ENTRANCES

(DO NOT RESURFACE FIELD ENTRANCES)

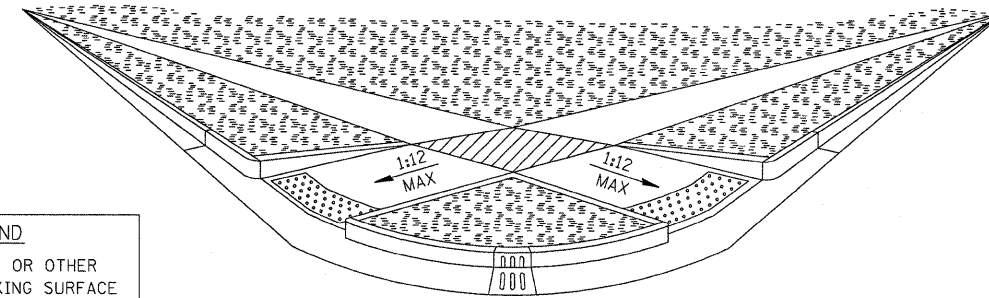
* PROPOSED HMA RESURFACING AT PUBLIC EDUCATIONAL FACILITY ENTRANCES SHALL BE EXTENDED TO THE RIGHT-OF-WAY LIMITS.

FILE NAME =	USER NAME = carpenterdj	DESIGNED -	REVISED -	STATE OF ILLINOIS DEPARTMENT OF TRANSPORTATION	DETAILS			F.A.P. RTE.	SECTION	COUNTY	TOTAL SHEETS	SHEET NO.
c:\pwork\PWIDOT\CARPENTERDJ\dms82734\details.dgn	PLT SCALE = 50.0000' / IN.	DRAWN -	REVISED -					332	(2X, 1X, 17, 48X-4)RS-3	IROQUOIS	15	11
PLT DATE = Jan 28, 2010 - 10:53:41 AM	DATE -	CHECKED -	REVISED -		SCALE: SHEET NO. OF SHEETS STA. TO STA.			CONTRACT NO. 66663				
								ILLINOIS FED. AID PROJECT				



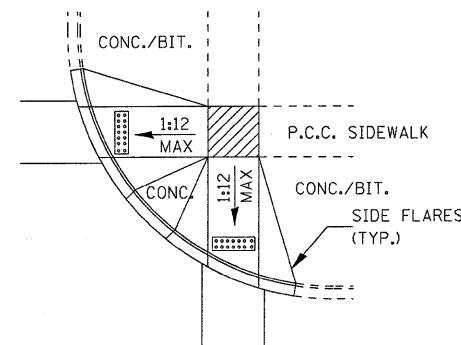
- LEGEND**
- PLANTING OR OTHER NON-WALKING SURFACE
 - SLOPE = 2% MAX.
 - DETECTABLE WARNING

**ADA SIDEWALK ACCESSIBILITY RAMPS
METHOD 1**



- LEGEND**
- PLANTING OR OTHER NON-WALKING SURFACE
 - SLOPE = 2% MAX.
 - DETECTABLE WARNING

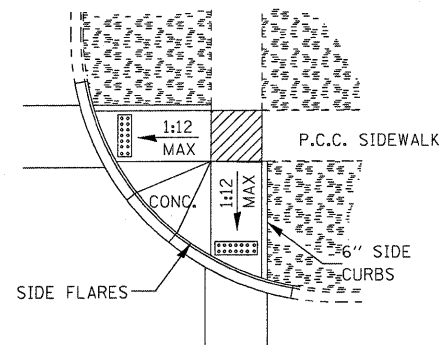
**ADA SIDEWALK ACCESSIBILITY RAMPS
METHOD 1 PERSPECTIVE WITH SIDE CURBS**



- LEGEND**
- PLANTING OR OTHER NON-WALKING SURFACE
 - SLOPE = 2% MAX.
 - DETECTABLE WARNING

**ADA SIDEWALK ACCESSIBILITY RAMPS
METHOD 1 PERSPECTIVE WITH SIDE FLARES**

THE MAXIMUM SLOPE OF THE SIDE FLARE FOR TYPE B RAMPS SHALL BE 1:10; HOWEVER, IF THE WIDTH OF THE LANDING AREA BETWEEN THE TOP OF THE RAMP AND AN OBSTRUCTION IS LESS THAN 4'-0" THEN THE MAXIMUM SLOPE SHALL BE 1:12.



- LEGEND**
- PLANTING OR OTHER NON-WALKING SURFACE
 - SLOPE = 2% MAX.
 - DETECTABLE WARNING

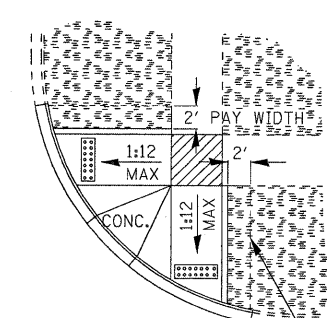
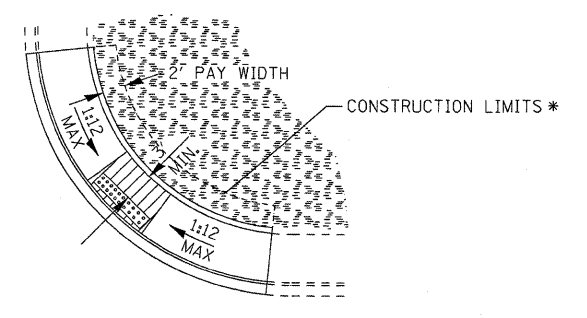
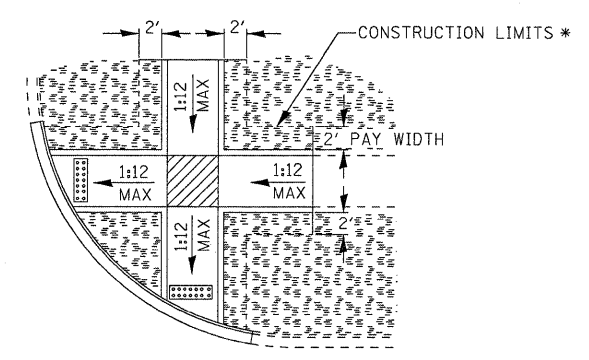
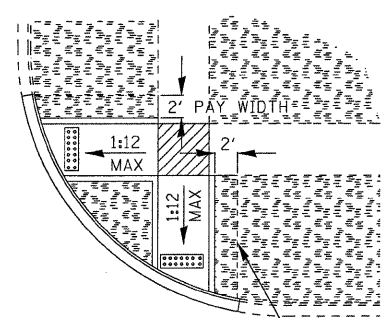
- LEGEND**
- PLANTING OR OTHER NON-WALKING SURFACE
 - SLOPE = 2% MAX.
 - DETECTABLE WARNING

**ADA SIDEWALK ACCESSIBILITY RAMPS
METHOD 1 PERSPECTIVE WITH SIDE CURBS AND SIDE FLARES**

THE MAXIMUM SLOPE OF THE SIDE FLARE FOR TYPE B RAMPS SHALL BE 1:10; HOWEVER, IF THE WIDTH OF THE LANDING AREA BETWEEN THE TOP OF THE RAMP AND AN OBSTRUCTION IS LESS THAN 4'-0" THEN THE MAXIMUM SLOPE SHALL BE 1:12.

TYPICAL CURB APPLICATIONS FOR METHOD 1

FILE NAME =	USER NAME = carpenterdj	DESIGNED -	REVISED -	STATE OF ILLINOIS DEPARTMENT OF TRANSPORTATION	F.A.P. RTE.	SECTION	COUNTY	TOTAL SHEETS	SHEET NO.
cr\pwork\FW100T\CARPENTERDJ\dms82734\details.dgn	details.dgn	DRAWN -	REVISED -		332	(2X, 1X, 17, 48X-4)RS-3	IRROUOIS	15	12
PLOT SCALE = 50.0000' / IN.	CHECKED -	REVISED -	REVISED -		CONTRACT NO. 66663				
PLOT DATE = Jan 28, 2010 - 10:53:31 AM	DATE -	REVISED -	REVISED -		ILLINOIS FED. AID PROJECT				
SCALE:					SHEET NO.	OF	SHEETS	STA.	TO STA.

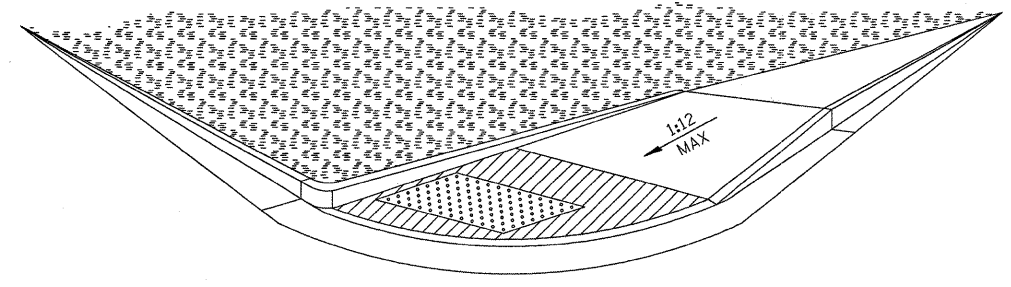


LEGEND

	PLANTING OR OTHER NON-WALKING SURFACE
	SLOPE = 2% MAX.
	DETECTABLE WARNING

* PAY FOR SOD IN PLANTING AREAS OR REMOVE AND REPLACE FOR OTHER SURFACES

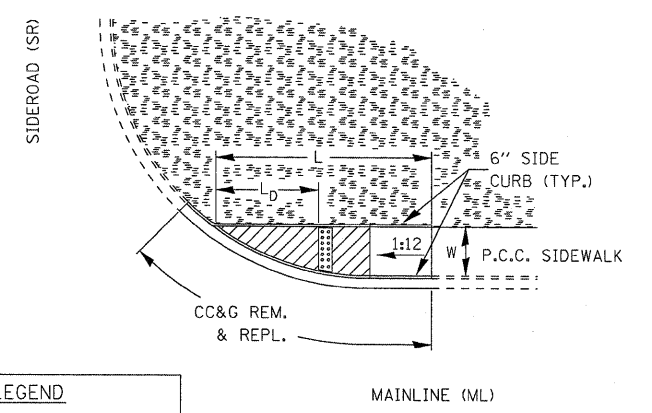
**ADA SIDEWALK ACCESSIBILITY RAMPS
TYPICAL SODDING DETAILS FOR SIDEWALK RAMPS**



LEGEND

	PLANTING OR OTHER NON-WALKING SURFACE
	SLOPE = 2% MAX.
	DETECTABLE WARNING

**ADA SIDEWALK ACCESSIBILITY RAMPS
METHOD 4 PERSPECTIVE**



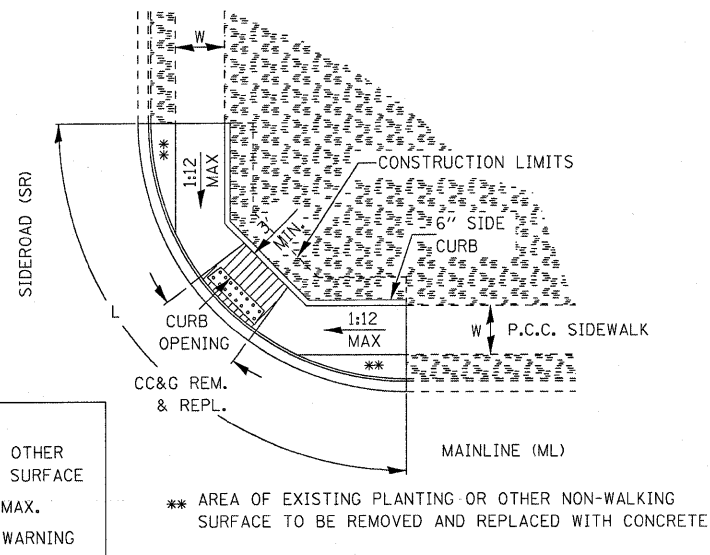
$L_D \leq 5'$

LEGEND

	PLANTING OR OTHER NON-WALKING SURFACE
	SLOPE = 2% MAX.
	DETECTABLE WARNING

**ADA SIDEWALK ACCESSIBILITY RAMPS
METHOD 4**

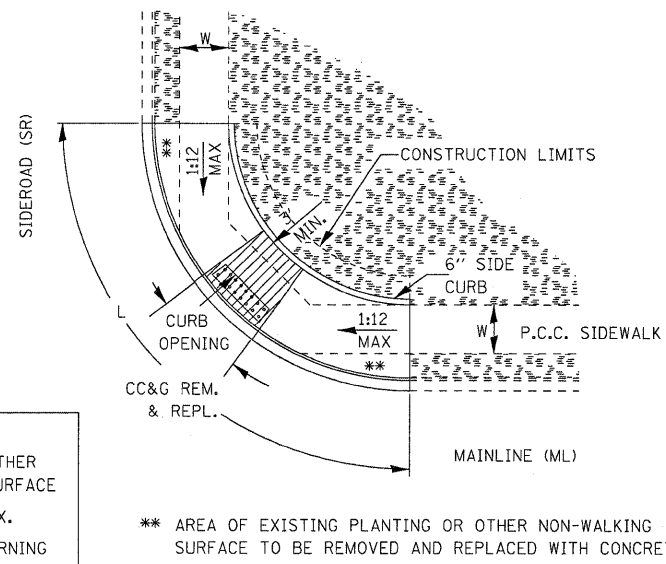
FILE NAME =	USER NAME = carpenterdj	DESIGNED -	REVISED -	STATE OF ILLINOIS DEPARTMENT OF TRANSPORTATION	F.A.P. RTE.	SECTION	COUNTY	TOTAL SHEETS	SHEET NO.	
c:\pwork\PW1001\CARPENTERDJ\dms82734	details.dgn	DRAWN -	REVISED -		332	(2X, 1X, 17, 48X-4)RS-3	IROQUOIS	15	13	
	PLOT SCALE = 50.0000' / IN.	CHECKED -	REVISED -		CONTRACT NO. 66663					
	PLOT DATE = Jan 28, 2010 - 10:53:22 AM	DATE -	REVISED -		ILLINOIS FED. AID PROJECT					
					SCALE:	SHEET NO.	OF	SHEETS	STA.	TO STA.



- LEGEND**
- PLANTING OR OTHER NON-WALKING SURFACE
 - SLOPE = 2% MAX.
 - DETECTABLE WARNING

** AREA OF EXISTING PLANTING OR OTHER NON-WALKING SURFACE TO BE REMOVED AND REPLACED WITH CONCRETE

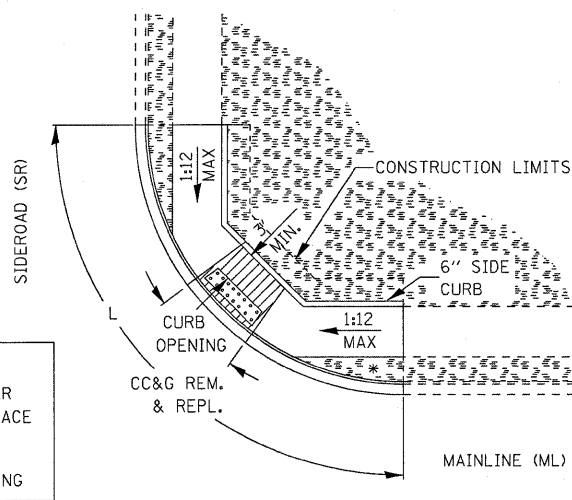
**ADA SIDEWALK ACCESSIBILITY RAMPS
METHOD 6**



- LEGEND**
- PLANTING OR OTHER NON-WALKING SURFACE
 - SLOPE = 2% MAX.
 - DETECTABLE WARNING

** AREA OF EXISTING PLANTING OR OTHER NON-WALKING SURFACE TO BE REMOVED AND REPLACED WITH CONCRETE

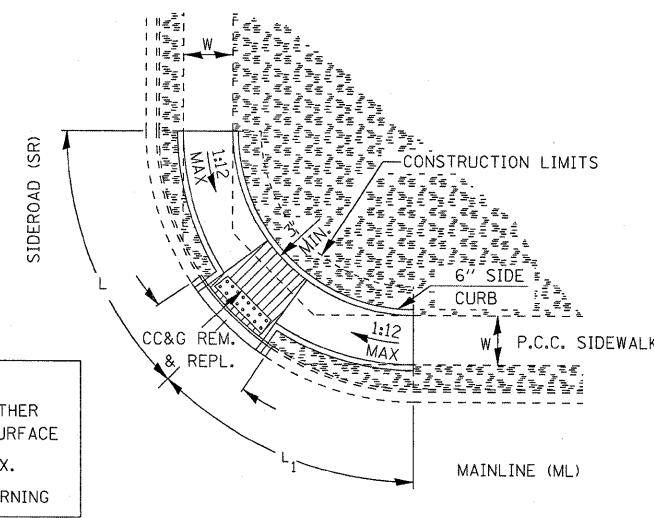
**ADA SIDEWALK ACCESSIBILITY RAMPS
METHOD 6**



- LEGEND**
- PLANTING OR OTHER NON-WALKING SURFACE
 - SLOPE = 2% MAX.
 - DETECTABLE WARNING

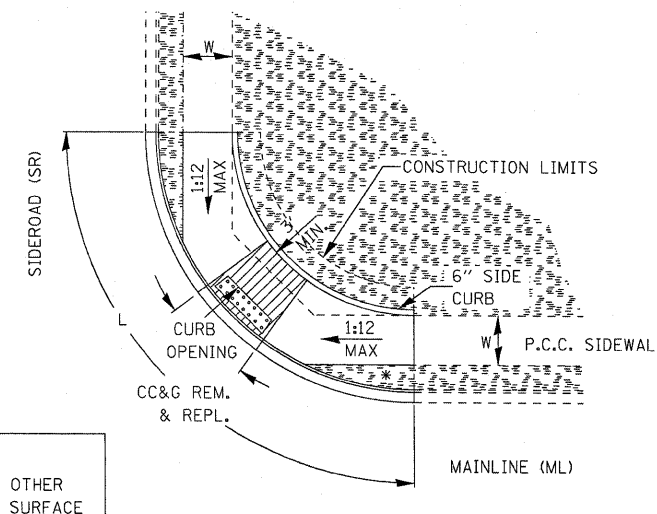
* PLANTING OR NON-WALKING SURFACE TO BE SLOPED TO MEET SLOPE OF SIDEWALK AND CURB & GUTTER (TYP.)

**ADA SIDEWALK ACCESSIBILITY RAMPS
METHOD 6**



- LEGEND**
- PLANTING OR OTHER NON-WALKING SURFACE
 - SLOPE = 2% MAX.
 - DETECTABLE WARNING

**ADA SIDEWALK ACCESSIBILITY RAMPS
METHOD 6**



- LEGEND**
- PLANTING OR OTHER NON-WALKING SURFACE
 - SLOPE = 2% MAX.
 - DETECTABLE WARNING

* PLANTING OR NON-WALKING SURFACE TO BE SLOPED TO MEET SLOPE OF SIDEWALK AND CURB & GUTTER (TYP.)

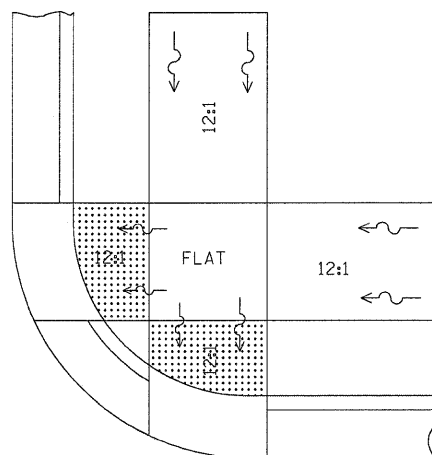
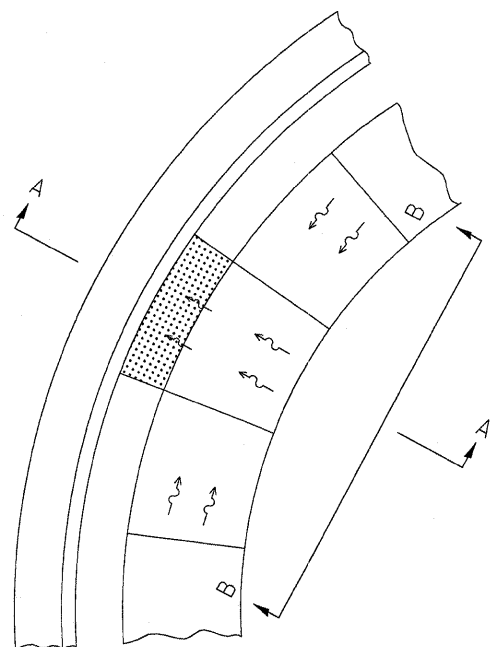
**ADA SIDEWALK ACCESSIBILITY RAMPS
METHOD 6**

FILE NAME =	USER NAME = carpenterd	DESIGNED -	REVISED -
o:\pwork\PWIDOT\CARPENTERD\dms82734	details.dgn	DRAWN -	REVISED -
	PLOT SCALE = 50.0000 / IN.	CHECKED -	REVISED -
	PLOT DATE = Jan 28, 2010 - 10:53:11 AM	DATE -	REVISED -

**STATE OF ILLINOIS
DEPARTMENT OF TRANSPORTATION**

F.A.P. RTE.	SECTION	COUNTY	TOTAL SHEETS	SHEET NO.
332	(2X, 1X, 17, 48X-4RS-3	IROQUOIS	15	14
CONTRACT NO. 66663				
ILLINOIS FED. AID PROJECT				

SCALE: SHEET NO. OF SHEETS STA. TO STA.



SEE STANDARD 424001 FOR SIDE FLARE
DETAIL & SEE PLANS FOR RAMP TYPE.

NOTES:

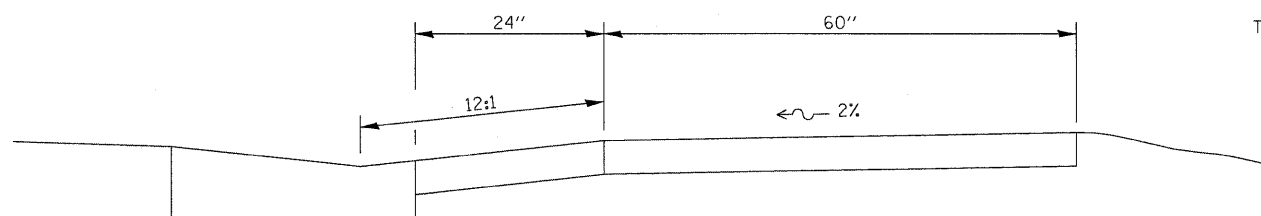
THIS DETAIL TO BE USED IN CONJUNCTION WITH STATE STANDARD 424001.

THE MAXIMUM ALLOWABLE CROSS SLOPE FOR SIDEWALK IS 2%.

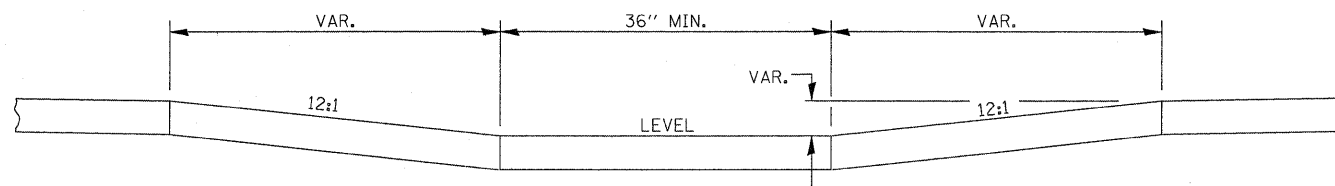
THE MAXIMUM ALLOWABLE SIDEWALK GRADE IS 8%.

IF SPACE LIMITATIONS PROHIBIT THE USE OF THE 12:1 SLOPE, THEN SLOPES BETWEEN 10:1 AND 12:1 ARE PERMITTED FOR A MAXIMUM RISE OF 6". SLOPES 8:1 AND 10:1 ARE ALLOWED FOR A MAXIMUM RISE OF 3". SLOPES STEEPER THAN 8:1 ARE NOT PERMITTED.

THE DEPRESSED CURB IS NOT STANDARD. THE RISE IS 1/2" INSTEAD OF 1 1/2".



SECTION A-A



SECTION B-B

ADA SIDEWALK ACCESSIBILITY RAMP DETAIL

FILE NAME =	USER NAME = carpenterdj	DESIGNED -	REVISED -
c:\pwork\pwidot\carpenterdj\dms82734\details.dgn		DRAWN -	REVISED -
PLOT SCALE = 50.0000' / IN.		CHECKED -	REVISED -
PLOT DATE = Jan 28, 2010 - 10:53:02 AM		DATE -	REVISED -

**STATE OF ILLINOIS
DEPARTMENT OF TRANSPORTATION**

SCALE: SHEET NO. OF SHEETS STA. TO STA.

F.A.P. RTE.	SECTION	COUNTY	TOTAL SHEETS	SHEET NO.
332	(2X, 1X, 17, 48X-4IRS-3	IRROUOIS	15	15
CONTRACT NO. 66663				
ILLINOIS FED. AID PROJECT				