

| | | | | |
|-----------|----------------|--------------------|--------------|-----------|
| F.A. RTE. | SECTION | COUNTY | TOTAL SHEETS | SHEET NO. |
| | (105, 106)RS-3 | FORD | 10 | 1 |
| | ILLINOIS | CONTRACT NO. 66922 | | |

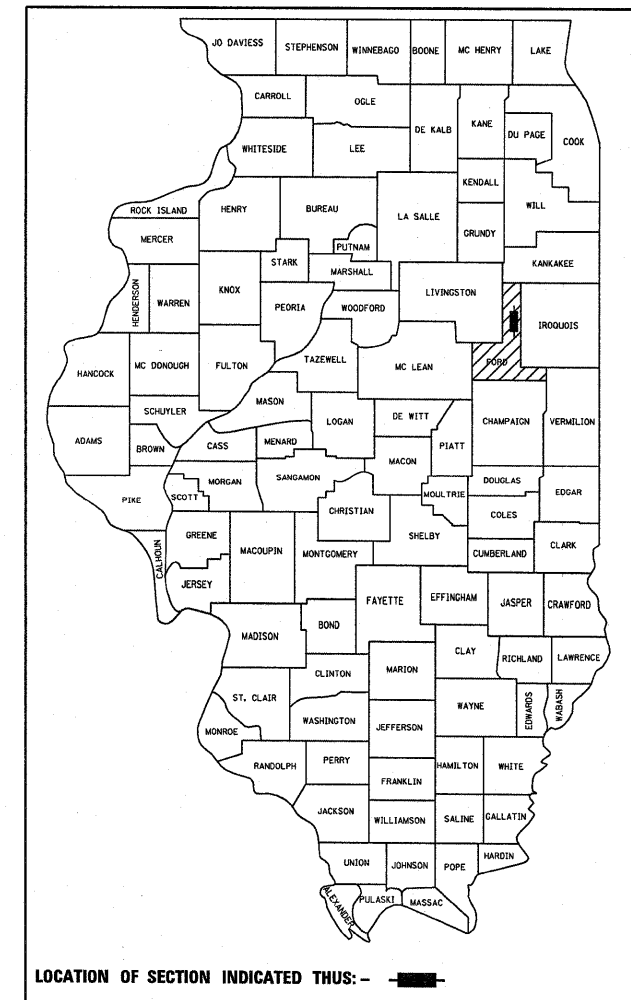
STATE OF ILLINOIS
DEPARTMENT OF TRANSPORTATION
DIVISION OF HIGHWAYS
**PROPOSED
HIGHWAY PLANS**

**FAP ROUTE 796 (IL 115)
SECTION (105, 106)RS-3**

**3P RESURFACING
FORD COUNTY**

C-93-057-09

D-93-024-07

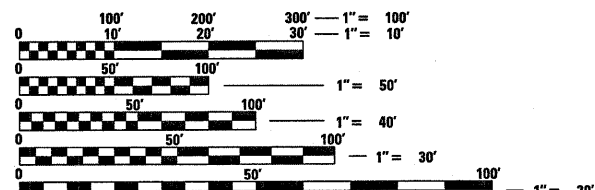
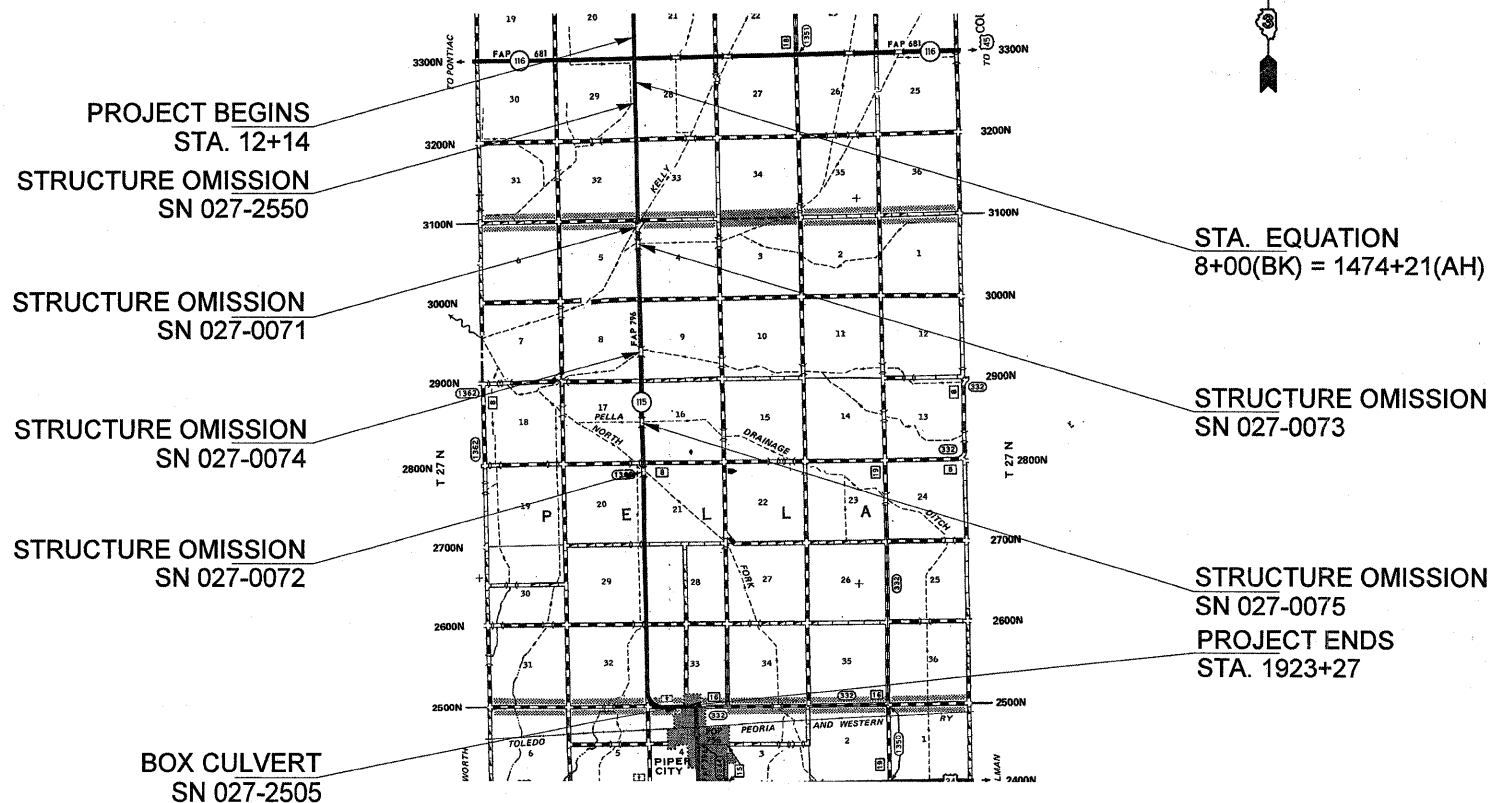


INDEX OF SHEETS

| | |
|------|--------------------------------|
| 1 | COVER SHEET |
| 2 | GENERAL NOTES AND LOCATION MAP |
| 3 | SUMMARY OF QUANTITIES |
| 4 | TYPICAL SECTIONS |
| 5-6 | SCHEDULES |
| 7 | SCHEMATIC |
| 8-10 | DETAILS |

STANDARDS

| | |
|-----------|--|
| 000001-05 | STANDARD SYMBOLS, ABBREVIATIONS AND PATTERNS |
| 001006 | DECIMAL OF AN INCH AND OF A FOOT |
| 406201-01 | MAILBOX TURNOUT |
| 667101-01 | PERMANENT SURVEY MARKERS |
| 701001-02 | OFF-ROAD OPERATIONS 2L, 2W, MORE THAN 15' (4.5 m) AWAY |
| 701006-03 | OFF-ROAD OPERATIONS 2L, 2W, 15' (4.5 m) TO 24" (600 mm) FROM PAVEMENT EDGE |
| 701011-02 | OFF-ROAD MOVING OPERATIONS 2L, 2W, DAY ONLY |
| 701201-03 | LANE CLOSURE, 2L, 2W, DAY ONLY, FOR SPEEDS ≥ 45 MPH |
| 701301-03 | LANE CLOSURE, 2L, 2W, SHORT TIME OPERATIONS |
| 701306-02 | LANE CLOSURE, 2L, 2W, SLOW MOVING OPERATIONS DAY ONLY, FOR SPEEDS ≥ 45 MPH |
| 701311-03 | LANE CLOSURE, 2L, 2W, MOVING OPERATIONS - DAY ONLY |
| 701901-01 | TRAFFIC CONTROL DEVICES |



FULL SIZE PLANS HAVE BEEN PREPARED USING STANDARD ENGINEERING SCALES. REDUCED SIZED PLANS WILL NOT CONFORM TO STANDARD SCALES. IN MAKING MEASUREMENTS ON REDUCED PLANS, THE ABOVE SCALES MAY BE USED.

J.U.L.I.E.
JOINT UTILITY LOCATION INFORMATION FOR EXCAVATION
1-800-892-0123
OR 811

PROJECT ENGINEER: JOE KANNEL
UNIT CHEIF: PAT BRABOY/NATHAN SELL
TOWNSHIP: MONA, PELLA
CONTRACT NO. 66922

GROSS LENGTH = 45,320 FT. = 8.58 MILE
NET LENGTH = 45,040 FT. = 8.53 MILE

FUNCTIONAL CLASSIFICATION - MINOR ARTERIAL
2007 ADT = 700
P.V. = 87.2%
S.U. = 7.1%
M.U. = 5.7%

STATE OF ILLINOIS
DEPARTMENT OF TRANSPORTATION
DIVISION OF HIGHWAYS

SUBMITTED 01/29 2010
Scott E. Stitt, P.E.
DEPUTY DIRECTOR OF HIGHWAYS, REGION ENGINEER
March 19 2010
Scott E. Stitt, P.E.
ACTING ENGINEER OF DESIGN AND ENVIRONMENT
March 19 2010
Christine M. Reade
DIRECTOR OF HIGHWAYS, CHIEF ENGINEER

**PRINTED BY THE AUTHORITY
OF THE STATE OF ILLINOIS**