

F.A. RTE.	SECTION	COUNTY	TOTAL SHEETS	SHEET NO.
	(105, 106)RS-3	FORD	10	1
	ILLINOIS	CONTRACT NO. 66922		

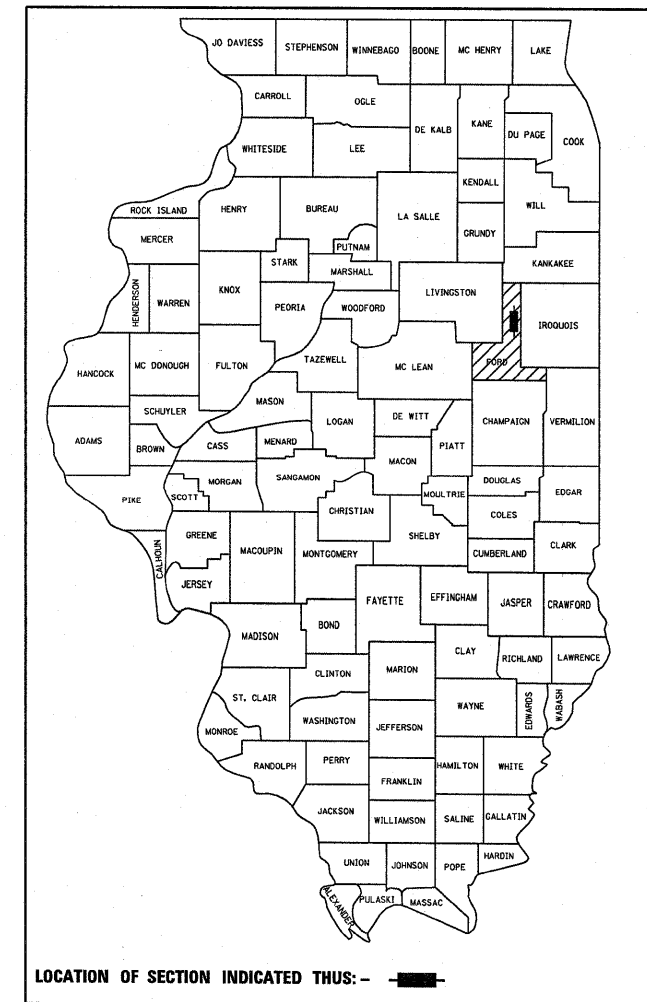
STATE OF ILLINOIS
DEPARTMENT OF TRANSPORTATION
DIVISION OF HIGHWAYS
**PROPOSED
HIGHWAY PLANS**

**FAP ROUTE 796 (IL 115)
SECTION (105, 106)RS-3**

**3P RESURFACING
FORD COUNTY**

C-93-057-09

D-93-024-07



LOCATION OF SECTION INDICATED THUS:

FUNCTIONAL CLASSIFICATION - MINOR ARTERIAL
2007 ADT = 700
P.V. = 87.2%
S.U. = 7.1%
M.U. = 5.7%

STATE OF ILLINOIS
DEPARTMENT OF TRANSPORTATION
DIVISION OF HIGHWAYS

SUBMITTED 01/29 2010
Scott E. Stitt
DEPUTY DIRECTOR OF HIGHWAYS, REGION ENGINEER

March 19 2010
Scott E. Stitt, P.E.
ACTING ENGINEER OF DESIGN AND ENVIRONMENT

March 19 2010
Christine M. Reagle
DIRECTOR OF HIGHWAYS, CHIEF ENGINEER

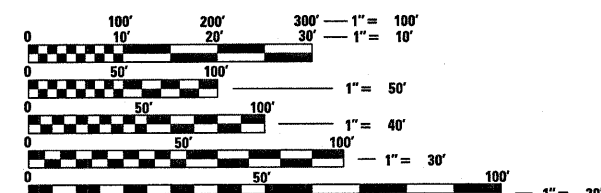
**PRINTED BY THE AUTHORITY
OF THE STATE OF ILLINOIS**

INDEX OF SHEETS

1	COVER SHEET
2	GENERAL NOTES AND LOCATION MAP
3	SUMMARY OF QUANTITIES
4	TYPICAL SECTIONS
5-6	SCHEDULES
7	SCHEMATIC
8-10	DETAILS

STANDARDS

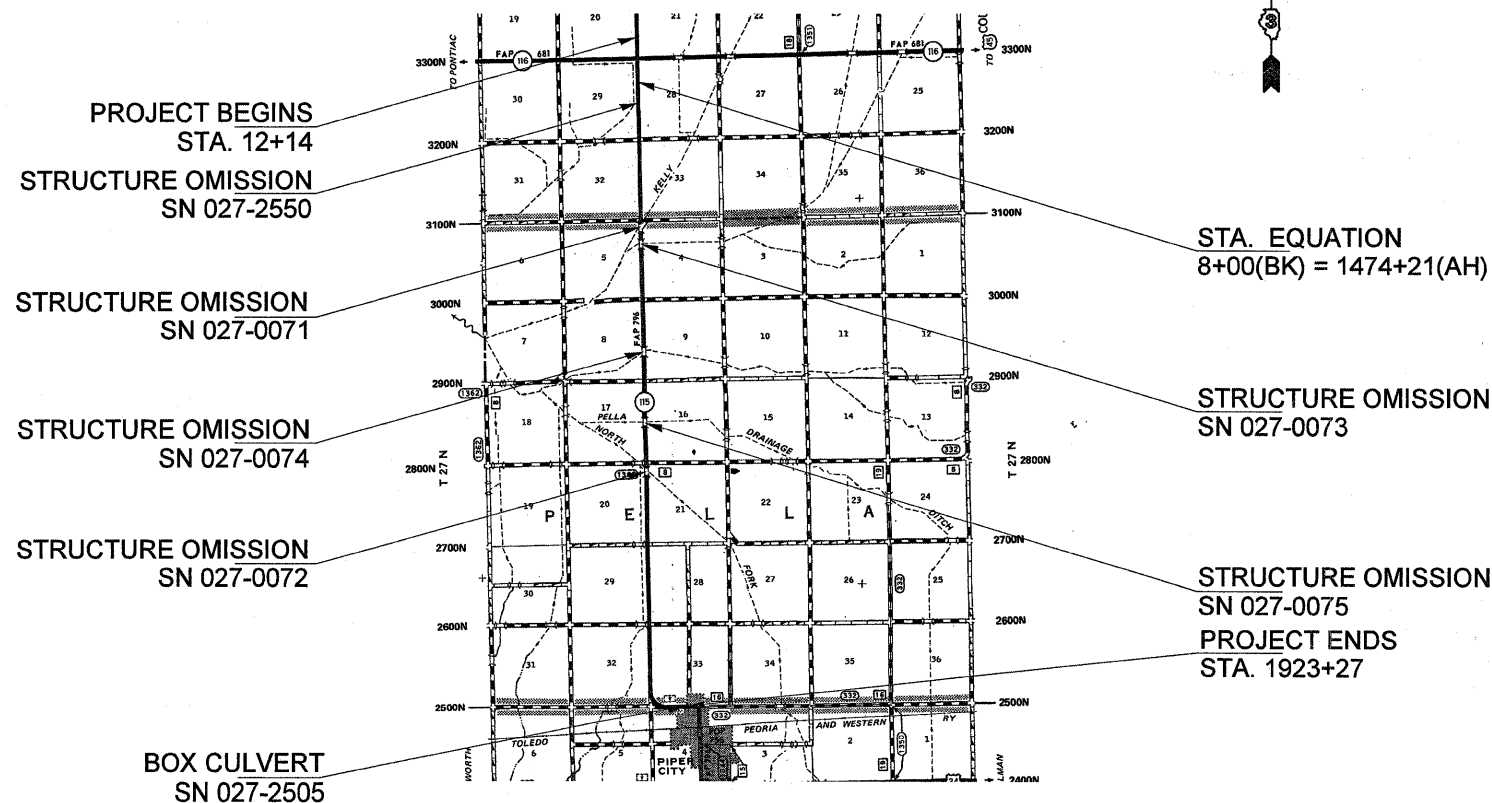
000001-05	STANDARD SYMBOLS, ABBREVIATIONS AND PATTERNS
001006	DECIMAL OF AN INCH AND OF A FOOT
406201-01	MAILBOX TURNOUT
667101-01	PERMANENT SURVEY MARKERS
701001-02	OFF-ROAD OPERATIONS 2L, 2W, MORE THAN 15' (4.5 m) AWAY
701006-03	OFF-ROAD OPERATIONS 2L, 2W, 15' (4.5 m) TO 24' (600 mm) FROM PAVEMENT EDGE
701011-02	OFF-ROAD MOVING OPERATIONS 2L, 2W, DAY ONLY
701201-03	LANE CLOSURE, 2L, 2W, DAY ONLY, FOR SPEEDS ≥ 45 MPH
701301-03	LANE CLOSURE, 2L, 2W, SHORT TIME OPERATIONS
701306-02	LANE CLOSURE, 2L, 2W, SLOW MOVING OPERATIONS DAY ONLY, FOR SPEEDS ≥ 45 MPH
701311-03	LANE CLOSURE, 2L, 2W, MOVING OPERATIONS - DAY ONLY
701901-01	TRAFFIC CONTROL DEVICES



FULL SIZE PLANS HAVE BEEN PREPARED USING STANDARD ENGINEERING SCALES. REDUCED SIZED PLANS WILL NOT CONFORM TO STANDARD SCALES. IN MAKING MEASUREMENTS ON REDUCED PLANS, THE ABOVE SCALES MAY BE USED.

J.U.L.I.E.
JOINT UTILITY LOCATION INFORMATION FOR EXCAVATION
1-800-892-0123
OR 811

PROJECT ENGINEER: JOE KANNEL
UNIT CHEIF: PAT BRABOY/NATHAN SELL
TOWNSHIP: MONA, PELLA
CONTRACT NO. 66922



GROSS LENGTH = 45,320 FT. = 8.58 MILE
NET LENGTH = 45,040 FT. = 8.53 MILE

GENERAL NOTES

(Revised May 13, 2009)

THE THICKNESS OF HMA SHOWN ON THE PLANS IS THE NOMINAL THICKNESS. DEVIATIONS FROM THE NOMINAL THICKNESS WILL BE PERMITTED WHEN SUCH DEVIATIONS OCCUR DUE TO IRREGULARITIES IN THE EXISTING SURFACE OR BASE ON WHICH THE HMA IS PLACED.

THE HMA SURFACE OF ALL MAILBOX TURNOUTS, PRIVATE ENTRANCES, COMMERCIAL ENTRANCES, AND SIDE ROADS SHALL BE MADE NEATLY, IN A WORKMANLIKE MANNER, AND SHALL ACCURATELY CONFORM TO THE SHAPES AND DIMENSIONS SHOWN ON THE PLAN DETAILS. IF REQUIRED BY THE ENGINEER, THE CONTRACTOR SHALL BE REQUIRED TO SAW CUT THE HMA SURFACE TO CONFORM TO THE SHAPES AND DIMENSIONS SHOWN ON THE PLAN DETAILS. THIS WORK SHALL BE INCLUDED IN THE COST OF THE HMA SURFACE.

EXCEPT AS NOTED ON THE PLANS, PAVEMENT GRADES SHOWN ARE AT THE TOP OF PAVEMENT SURFACES.

THE ENGINEER WILL BE THE SOLE JUDGE CONCERNING CURING TIME FOR THE VARIOUS HMA LIFTS.

SEEDING SHALL NOT BE PERMITTED AT ANY TIME WHEN THE GROUND IS FROZEN, WET, OR IN AN UNTILLABLE CONDITION. LOCATIONS TO BE SEEDED WILL BE DETERMINED BY THE ENGINEER.

THE FINISHED EARTHWORK SHALL HAVE A VEGETATION SUSTAINING SOIL COVERING THE TOP FOUR INCHES IN AREAS TO BE SEEDED OR SODDED. THE VEGETATION SUSTAINING SOIL REQUIRED WILL NOT BE PAID FOR SEPARATELY BUT SHALL BE INCLUDED IN THE COST OF FURNISHED EXCAVATION

ON EXISTING PAVEMENT WHICH MAY BE SUPERELEVATED, THE NEW HMA PAVEMENT SHALL BE BUILT WITH THE SAME SUPERELEVATION UNLESS NEW SUPERELEVATION RATES ARE GIVEN ON THE PLANS.

ABANDONED UNDERGROUND UTILITIES THAT CONFLICT WITH CONSTRUCTION SHALL BE DISPOSED OF OUTSIDE THE LIMITS OF THE RIGHT OF WAY ACCORDING TO ARTICLE 202.03 OF THE STANDARD SPECIFICATIONS AND AS DIRECTED BY THE ENGINEER. THIS WORK WILL NOT BE PAID FOR SEPARATELY, BUT SHALL BE INCLUDED IN THE COST OF EARTH EXCAVATION.

ANY REFERENCE TO A STANDARD IN THESE PLANS SHALL BE INTERPRETED TO MEAN THE EDITION AS INDICATED BY THE SUBNUMBER SHOWN IN THE LIST OF STANDARDS OR THE COPY INCLUDED IN THESE PLANS.

THE FOLLOWING RATES OF APPLICATION HAVE BEEN USED IN CALCULATING PLAN QUANTITIES:

GRANULAR MATERIALS	2.05	TONS / CU YD
POLYMERIZED BIT MATERIALS (PRIME COAT)	0.10	GAL / SQ YD
FOR ADDITIONAL HMA LIFTS "FOG COAT"	0.08	GAL / SQ YD
AGGREGATE PRIME COAT	0.002	TONS / SQ YD
HMA RESURFACING	112	LBS / SQ YD / IN
SHORT TERM PAVEMENT MARKING	10	FT /100 FT OF APPLICATION
MIX FOR CRACKS, JTS & FLGWYS	0.0003	TONS / SQ YD
LEVEL BINDER (HAND METHOD)	0.0005	TONS / SQ YD

MEMBERS OF JULIE KNOWN TO BE WITHIN THE LIMITS OF THE IMPROVEMENT ARE:

NON-MEMBERS OF JULIE KNOWN TO BE WITHIN THE LIMITS OF THE IMPROVEMENT ARE:

THE CONTRACTOR SHALL CONTACT JULIE AT LEAST 48 HOURS PRIOR TO EXCAVATION TO DETERMINE WHICH UTILITIES ARE IN THE AREA.

COMMITMENTS:

1. TIE POINTS FOR SURVEY MARKERS
2. STRUCTURE NO. 027-0075 IS RESTRICTED TO LEGAL LOADS ONLY.

STATE OF ILLINOIS
DEPARTMENT OF TRANSPORTATION
DISTRICT THREE

PREPARED BY: David B. Smith
ACTING DISTRICT STUDIES & PLANS ENGINEER

DATE: _____

EXAMINED BY: Harold J. Jones
DISTRICT CONSTRUCTION ENGINEER

Wayne R. Hulley
DISTRICT MATERIALS ENGINEER

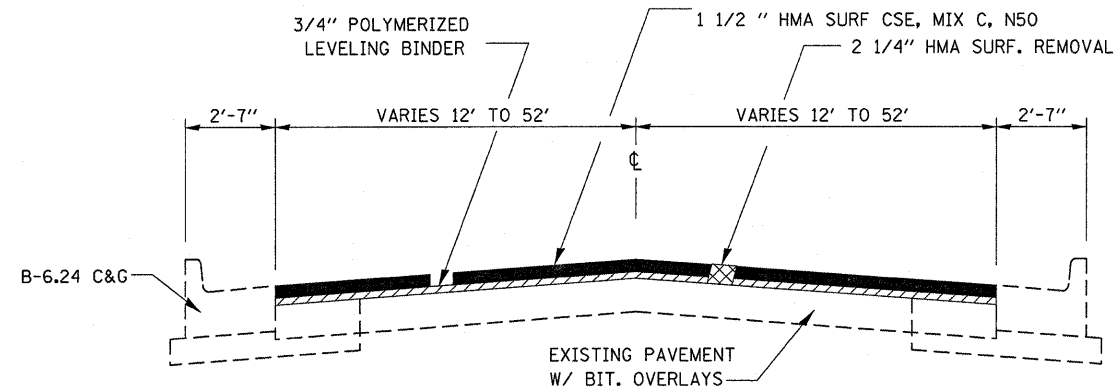
James A. Buckner
DISTRICT OPERATIONS ENGINEER

FILE NAME =	USER NAME = sellnr	DESIGNED -	REVISED -	STATE OF ILLINOIS DEPARTMENT OF TRANSPORTATION	GENERAL NOTES	F.A.P. RTE.	SECTION	COUNTY	TOTAL SHEETS	SHEET NO.
cr\pwwork\pwwid\SELLNR\2173864\3365	22-ahd-detail.s.dgn	DRAWN -	REVISED -			796	(105,106)RS-3	FORD	10	2
	PLOT SCALE = 50.3426' / IN.	CHECKED -	REVISED -			CONTRACT NO. 66922			ILLINOIS FED. AID PROJECT	
	PLOT DATE = Jan 29, 2010 - 11:45:17 AM	DATE -	REVISED -			SCALE: _____	SHEET NO. ___ OF ___ SHEETS	STA. _____ TO STA. _____		

SUMMARY OF QUANTITIES				100% STATE	
CODE NO.	CONSTRUCTION CODE TYPE: ITEM	UNIT	TOTAL QUANTITY	1000	
				RDWY QUANTITY	
20400800	FURNISHED EXCAVATION	CU YD	32	32	
40600115	POLYMERIZED BITUMINOUS MATERIALS (PRIME COAT)	GALLON	25726	25726	
40600300	AGGREGATE (PRIME COAT)	TON	289	289	
40600400	MIXTURE FOR CRACKS, JOINTS, AND FLANGEWAYS	TON	40.1	40.1	
40600725	POLYMERIZED LEVELING BINDER (HAND METHOD), N50	TON	67	67	
40600826	POLYMERIZED LEVELING BINDER (MACHINE METHOD), IL 4.75, N50	TON	6138	6138	
40600895	CONSTRUCTING TEST STRIP	EACH	2	2	
40600990	TEMPORARY RAMP	SQ YD	267	267	
40603310	HOT-MIX ASPHALT SURFACE COURSE, MIX "C", N50	TON	11558	11558	
40800050	INCIDENTAL HOT-MIX ASPHALT SURFACING	TON	302	302	
44000158	HOT-MIX ASPHALT SURFACE REMOVAL, 2 1/4"	SQ YD	133585	133585	
44000198	HOT-MIX ASPHALT SURFACE REMOVAL, VARIABLE DEPTH	SQ YD	2326	2326	
48101200	AGGREGATE SHOULDERS, TYPE B	TON	1528	1528	
66700095	PERMANENT SURVEY MARKERS	EACH	6	6	
67100100	MOBILIZATION	L SUM	1	1	
70100450	TRAFFIC CONTROL AND PROTECTION, STANDARD 701201	L SUM	1	1	
70100460	TRAFFIC CONTROL AND PROTECTION, STANDARD 701306	L SUM	1	1	
70102620	TRAFFIC CONTROL AND PROTECTION, STANDARD 701501	L SUM	1	1	
70300100	SHORT-TERM PAVEMENT MARKING	FOOT	13775	13775	
70300220	TEMPORARY PAVEMENT MARKING - LINE 4"	FOOT	96152	96152	
70300240	TEMPORARY PAVEMENT MARKING - LINE 6"	FOOT	1483	1483	
70300250	TEMPORARY PAVEMENT MARKING - LINE 8"	FOOT	452	452	
70300260	TEMPORARY PAVEMENT MARKING - LINE 12"	FOOT	104	104	
70300280	TEMPORARY PAVEMENT MARKING - LINE 24"	FOOT	138	138	
70301000	WORK ZONE PAVEMENT MARKING REMOVAL	SQ FT	4546	4546	
* 78000200	THERMOPLASTIC PAVEMENT MARKING - LINE 4"	FOOT	2502	2502	
* 78000400	THERMOPLASTIC PAVEMENT MARKING - LINE 6"	FOOT	380	380	
* 78000500	THERMOPLASTIC PAVEMENT MARKING - LINE 8"	FOOT	452	452	
* 78000600	THERMOPLASTIC PAVEMENT MARKING - LINE 12"	FOOT	104	104	
* 78000650	THERMOPLASTIC PAVEMENT MARKING - LINE 24"	FOOT	138	138	
* 78001110	PAINT PAVEMENT MARKING - LINE 4"	FOOT	93650	93650	
* 78001130	PAINT PAVEMENT MARKING - LINE 6"	FOOT	11003	11003	
* 78100100	RAISED REFLECTIVE PAVEMENT MARKER	EACH	594	594	
78300200	RAISED REFLECTIVE PAVEMENT MARKER REMOVAL	EACH	594	594	
X0322729	MATERIAL TRANSFER DEVICE	TON	17696	17696	

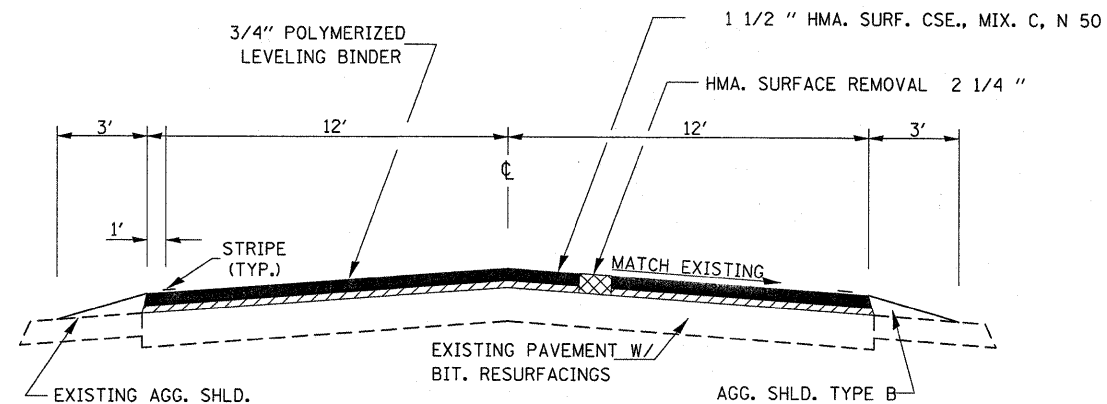
* SPECIALTY ITEM

FILE NAME =	USER NAME = sellnr	DESIGNED - ---	REVISED - ---	STATE OF ILLINOIS DEPARTMENT OF TRANSPORTATION	SUMMARY	F.A.P. RTE.	SECTION	COUNTY	TOTAL SHEETS	SHEET NO.	
c:\pw_work\PW100T\SELLNR\d0173864\d36522-sht-details.dgn		DRAWN - ---	REVISED - ---			796	(105,106)RS-3	FORD	10	3	
PLOT SCALE = 50.0539' / IN.		CHECKED - ---	REVISED - ---			CONTRACT NO. 66922					
PLOT DATE = Jan 29, 2010 - 01:41:48 PM		DATE - ---	REVISED - ---			SCALE: _____	SHEET NO. ___ OF ___ SHEETS	STA. _____ TO STA. _____	ILLINOIS FED. AID PROJECT		



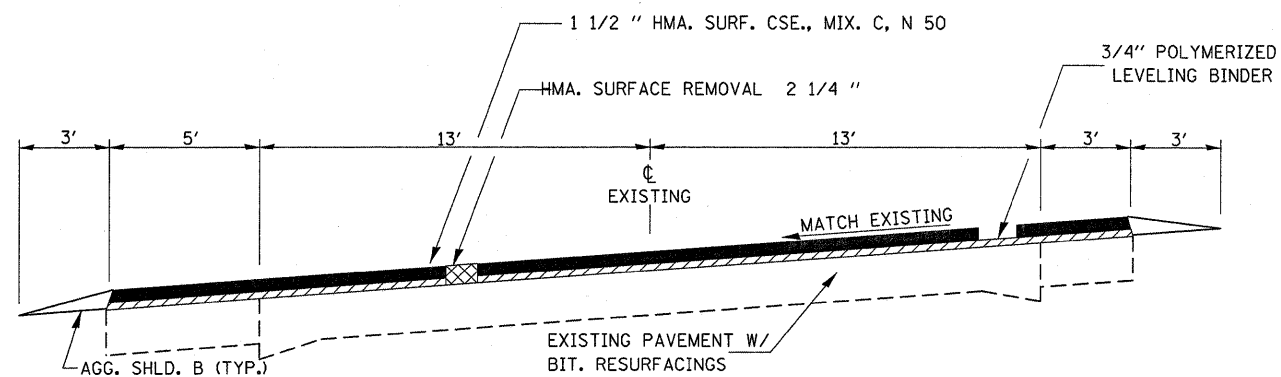
TYPICAL SECTION

STA. 8+00 TO STA. 12+14



TYPICAL SECTION

STA.1473+51 - 1579+38
 STA. 1581+57 - 1593+33
 STA. 1594+08 - 1665+69
 STA. 1666+36 - 1711+03
 STA. 1711+61 - 1740+81
 STA. 1741+83 - 1892+20
 STA. 1902+50 - 1923+27



TYPICAL SECTION

STA. 1892+20 - STA. 1902+50

	HMA LEVEL BINDER	HMA SURFACE
PG GRADE	SBS PG 70-22	PG 64-22
DESIGN AIR VOIDS	4% @ N50	4% @ N50
MIXTURE COMPOSITION	IL 4.75	IL 12.5 OR IL 9.5
FRICTION		
AGGREGATE		MIXTURE C
DENSITY CONTROL LIMITS	CORES/ CORRELATION	CORRELATION

MAINLINE												
LOCATION	WIDTH	LENGTH	AREA	HMA SURF REM 2 1/4"	HMA LEVEL BIND (HM)	POLYMER LEVEL BINDER (MM)	HMA SC MIX "D" N50	MIX CR JTS FLANGEWYS	POLYMER BIT MATLS PR CT	AGG PR CT	TEMP RAMP	AGG SHLD TY B
STATION	FT	FT	SQ YD	SQ YD	TON	TON	TON	TON	GAL	TON	SQ YD	TON
IL 116 INTERSECTION**	VAR	VAR	5415.0	5415.0	2.7	227.4	454.9	1.6	974.7	10.8	36.0	90.7
1474+21 TO 1496+90	+26	2269.0	6554.9	6554.9	3.3	296.5	550.6	2.0	1270.6	14.1	12.0	172.3
1496+90 TO 1502+10 (S.N. 027-0255)							STRUCUTRE OMISSION					
1502+10 TO 1579+38	+26	7728.0	22325.3	22325.3	11.2	1009.8	1875.3	6.7	4327.7	48.1	24.0	586.8
1579+38 TO 1581+57 (S.N. 027-0071)							STRUCUTRE OMISSION					
1581+57 TO 1593+33	+26	1176.0	3397.3	3397.3	1.7	153.7	285.4	1.0	658.6	7.3	12.0	89.3
1593+33 TO 1594+08 (S.N. 027-0073)							STRUCUTRE OMISSION					
1594+08 TO 1665+69	+26	7161.0	20687.3	20687.3	10.3	935.7	1737.7	6.2	4010.2	44.6		543.7
1665+69 TO 1666+36 (S.N. 027-0074)							STRUCUTRE OMISSION					
1666+36 TO 1711+03	+26	4467.0	12904.7	12904.7	6.5	583.7	1084.0	3.9	2501.5	27.8		339.2
1711+03 TO 1711+61 (S.N. 027-0075)							STRUCUTRE OMISSION					
1711+61 TO 1740+81	+26	2920.0	8435.6	8435.6	4.2	381.5	708.6	2.5	1635.2	18.2		221.7
1740+81 TO 1741+83 (S.N. 027-0072)							STRUCUTRE OMISSION					
1741+83 TO 1889+20	+26	14737.0	42573.6	42573.6	21.3	1925.6	3576.2	12.8	8252.7	91.7		1118.9
1889+20 TO 1905+50	+34	1630.0	6157.8	6157.8	3.1	213.0	517.3	1.8	912.8	10.1		123.8
1905+50 TO 1923+27	+26	1777.0	5133.6	5133.6	2.6	232.2	431.2	1.5	995.1	11.1	12.0	134.9
TOTALS			133585.0	133585.0	66.8	6137.9	11557.8	40.1	25539.1	283.8	96.0	1527.2

** QUANTITY INCLUDES ALL LEGS OF INTERSECTION. STATION EQUATION IL 115 STA. 8+00 (BK)= 1474+21(AH)

MATERIAL TRANSFER DEVICE REQUIRED FOR LEVEL BINDER AND SURFACE COURSE

PAVEMENT MARKING SCHEDULE										
STA. TO STA.	PAINT PAVEMENT MARKING			THERMOPLASTIC PAVEMENT MARKING					RAISED REFL PVT MK REM	RAISED REFL PAVT MARK
	4" WHT	4" YELL	6" YELL	4" WHT	6" YELL	8" WHT	12" WHT	24" WHT	EA	EA
	FT	FT	FT	FT	FT	FT	FT	FT		
MAINLINE										
1473+21 TO 1923+27	89952	3698	11003						578	578
IL 115/IL 116 INTERSECTION				2502	380	452	104	138	16	16
SUBTOTALS	89952	3698	11003	2502	380	452	104	138	594	594
TOTALS	93650		11003	2502	380	452	104	138	594	594

NOTE: THE FOLLOWING NO PASSING ZONES SHOULD BE FIELD VERIFIED BY THE ENGINEER PRIOR TO RESURFACING

SB: STA. 1883+54 TO 1902+05

NB STA. 1892+33 TO 1910+80

TEMPORARY PAVEMENT MARKING SCHEDULE								
STA. TO STA.	TEMPORARY PAVEMENT MARKING						SHORT TERM PAVT MARK	WORK ZONE PAVT MARK REM.
	4" WHT	4" YELL	6" YELL	8" WHT	12" WHT	24" WHT	FT	SQ FT
	FT	FT	FT	FT	FT	FT		
MAINLINE								
1473+21 TO 1923+27	89952	3698	1103				13501	4455
IL 115/IL 116 INTERSECTION	2502		380	452	104	138	274	90
SUBTOTALS	92454	3698	1483	452	104	138	13775	4546
TOTALS	96152		1483	452	104	138	13775	4546

NOTE: THE FOLLOWING NO PASSING ZONES SHOULD BE FIELD VERIFIED BY THE ENGINEER PRIOR TO RESURFACING

SB: STA. 1883+54 TO 1902+05

NB STA. 1892+33 TO 1910+80

FILE NAME =	USER NAME = sellnr	DESIGNED -	REVISED -	STATE OF ILLINOIS DEPARTMENT OF TRANSPORTATION	SCHEDULES				F.A.P. RTE.	SECTION	COUNTY	TOTAL SHEETS	SHEET NO.
et\pwwork\PIWIDOT\SELLNR\d8173864\d366	22-sh-t-deta:ls.dgn	DRAWN -	REVISED -		SCALE: _____	SHEET NO. ____ OF ____ SHEETS	STA. _____ TO STA. _____	796	(105,106)RS-3	FORD	10	5	
	PLOT SCALE = 5/8, 3/4, 26' / IN.	CHECKED -	REVISED -						CONTRACT NO. 66922				
	PLOT DATE = Jan 29, 2010 - 11:44:40 AM	DATE -	REVISED -						ILLINOIS FED. AID PROJECT				

SIDE ROAD & ENTRANCES								
LOCATION	STATION	RT/LT	INCIDENTAL	BIT	HMA	TEMP.	FURN.	AGG
			HMA SURF	MATLS PR CT	SURF REM. VAR. DP	RAMP	EX*	PR CT
			TON	GAL	SQ YD	SQ YD	CU YD	TON
PE (IL 116)	3+70	LT	8.4	5.3	66.7			
PE	11+00	LT	10.7	6.8	85.0			0.2
3200 N	1525+30	RT/LT	18.2	11.6	144.4	21.3	4.0	0.3
	1540+45	RT	3.9	2.5	31.1			0.1
	1547+44	LT	3.1	2.0	24.4			0.0
	1554+31	LT	4.3	2.8	34.4			0.1
	1555+45	LT	4.5	2.8	35.6			0.1
3100 N	1578+03	RT	18.1	11.5	143.3	10.7	2.0	0.3
3100 N	1582+50	LT	16.8	10.7	133.3	10.7	2.0	0.3
3000 N	1631+45	RT/LT	18.5	11.7	146.7	21.3	4.0	0.3
	1651+90	LT	3.5	2.2	27.8			0.1
	1652+43	RT	4.9	3.1	38.9			0.1
2900 N	1684+75	RT/LT	26.2	16.6	208.0	21.3	4.0	0.4
	1704+65	RT	4.0	2.6	31.9			0.1
	1706+10	RT	1.1	0.7	8.9			0.0
	1706+10	LT	2.4	1.5	18.9			0.0
	1707+30	LT	0.8	0.5	6.7			0.0
2800 N	1737+84	RT/LT	28.2	17.9	223.9	21.3	4.0	0.4
	1784+54	LT	2.9	1.8	22.8			0.0
	1786+37	LT	2.3	1.5	18.3			0.0
2700 N	1790+97	RT/LT	7.8	5.0	62.3	21.3	4.0	0.1
	1807+15	RT	4.1	2.6	32.8			0.1
	1807+15	LT	5.9	3.7	46.7			0.1
	1817+30	LT	5.7	3.6	45.6			0.1
2600 N	1844+30	RT/LT	28.5	18.1	226.1	21.3	4.0	0.5
	1881+63	RT	2.9	1.9	23.3			0.0
	1882+55	LT	2.1	1.3	16.7			0.0
	1882+55	RT	2.1	1.3	16.7			0.0
	1883+54	RT	2.8	1.8	22.2			0.0
1400 E	1894+06	RT	16.0	10.2	127.2	10.7	2.0	0.3
2500 N	1901+33	RT	27.0	17.1	213.9	10.7	2.0	0.4
	1909+30	LT	2.4	1.5	18.9			0.0
	1910+61	LT	2.8	1.8	22.2			0.0
			301.8	186.0	2325.6	170.6	32.0	4.7

*PLACE FURNISHED EX AROUND SIDEROAD RADII. THIS AREA TO BE SEEDED, FERTILIZED AND MULCHED- NOT PAID FOR SEPERATELY BUT INCLUDED IN THE COST OF FURNISHED EXCAVATION

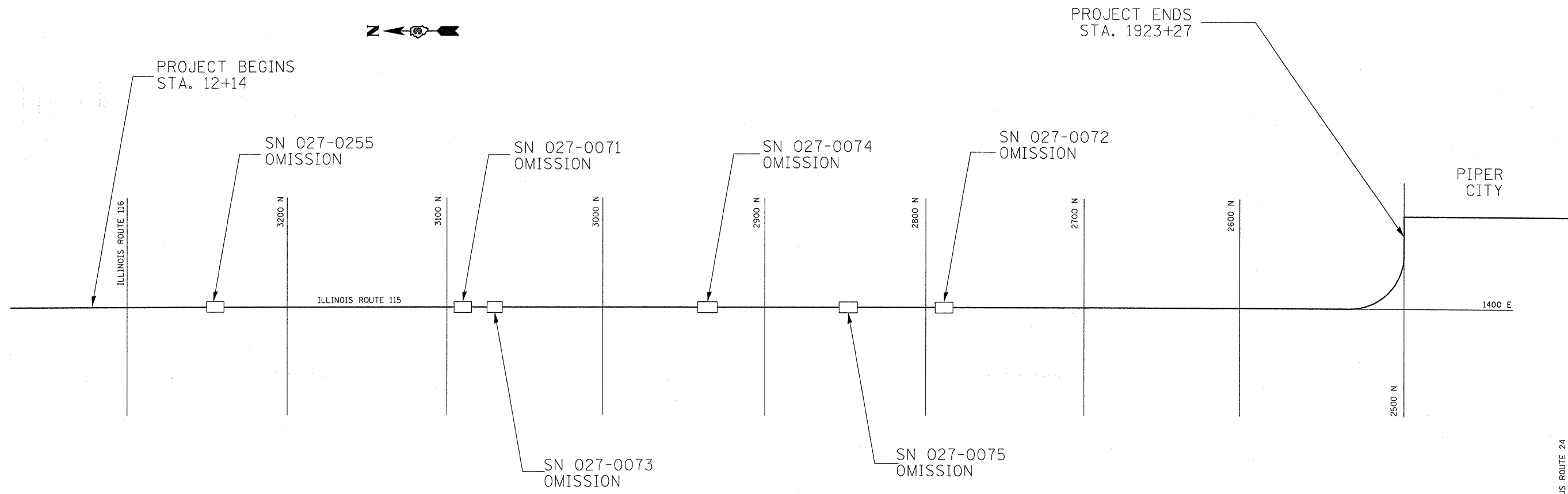
PERMANENT SURVEY MARKERS, TYPE 1				
LOCATION	DESCRIPTION	EXISTING MONUMENT	PERM SURV MK, TY 1 EACH	NOTE
IL 116 4+59 3' LT	SW CORN SEC. 21 T28 R1E	BRASS DISK	1	2
1499+26	E 1/4 SEC. 29 T28 R9E	BRASS DISK	1	2
	SE CORN SEC 29 T28N R9E	SURVEY NAIL		1
	W 1/4 SEC. 4 T27N R9E	PK NAIL		1
	NW CORN SEC. 9 T27N R9E	PK NAIL		1
1684+66 2.5' RT	NW CORN SEC. 16 T27 R9E	BRASS DISK	1	2
1711+24 3' RT	W 1/4 SEC. 16 T27 R9E	PK NAIL	1	2
1737+86 8' RT	SW CORN SEC. 16 T27 R9E	BRASS DISK	1	2
	NW CORN SEC. 33 T27N R9E	PK NAIL	1	2
	W 1/4 SEC. 33 T27N R9E	PK NAIL		1
TOTAL			6	

SEE COMMITMENT FILE FOR TIE POINTS

NOTE 1: RESIDENT TO RE-ESTABLISH MONUMENT, PAY ITEM FOR PERMANENT SURVEY MARKER TY 1 NOT TO BE USED

NOTE 2: RESIDENT TO RE-ESTABLISH MONUMENT AND FURNISH TIE SKETCHES TO D3 PLATS AND PLANS

FILE NAME =	USER NAME = sellnr	DESIGNED - ---	REVISED - ---	STATE OF ILLINOIS DEPARTMENT OF TRANSPORTATION	SCHEDULES			F.A.P. RTE.	SECTION	COUNTY	TOTAL SHEETS	SHEET NO.
at\pwork\PW1001\SELLNR\d0173864\d36622-sht-details.dgn		DRAWN - ---	REVISED - ---		796	(105,106)RS-3	FORD	10	6			
PLOT SCALE = 50.1355' / IN.		CHECKED - ---	REVISED - ---		CONTRACT NO. 66922							
PLOT DATE = Jan 29, 2010 - 01:42:04 PM		DATE - ---	REVISED - ---	SCALE: _____	SHEET NO. ___ OF ___ SHEETS	STA. _____ TO STA. _____	ILLINOIS FED. AID PROJECT					



FILE NAME =	USER NAME = sellnr	DESIGNED -	REVISD -
cr\pw\work\PIWIDOT\SELLNR\d0173864\d366	22-sht-detail.dgn	DRAWN -	REVISD -
	PLOT SCALE = 50.0539' / IN.	CHECKED -	REVISD -
	PLOT DATE = Jan 29, 2010 - 11:44:12 AM	DATE -	REVISD -

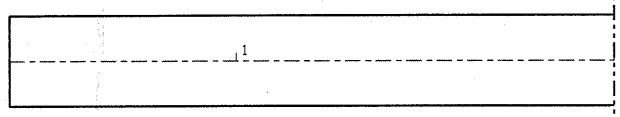
**STATE OF ILLINOIS
DEPARTMENT OF TRANSPORTATION**

SCHMATIC			
SCALE: _____	SHEET NO. ____ OF ____ SHEETS	STA. _____	TO STA. _____

F.A.P. RTE.	SECTION	COUNTY	TOTAL SHEETS	SHEET NO.
796	(105,106)RS-3	FORD	10	7
CONTRACT NO. 66922				
ILLINOIS FED. AID PROJECT				

US ROUTE 24

STA. 0+40

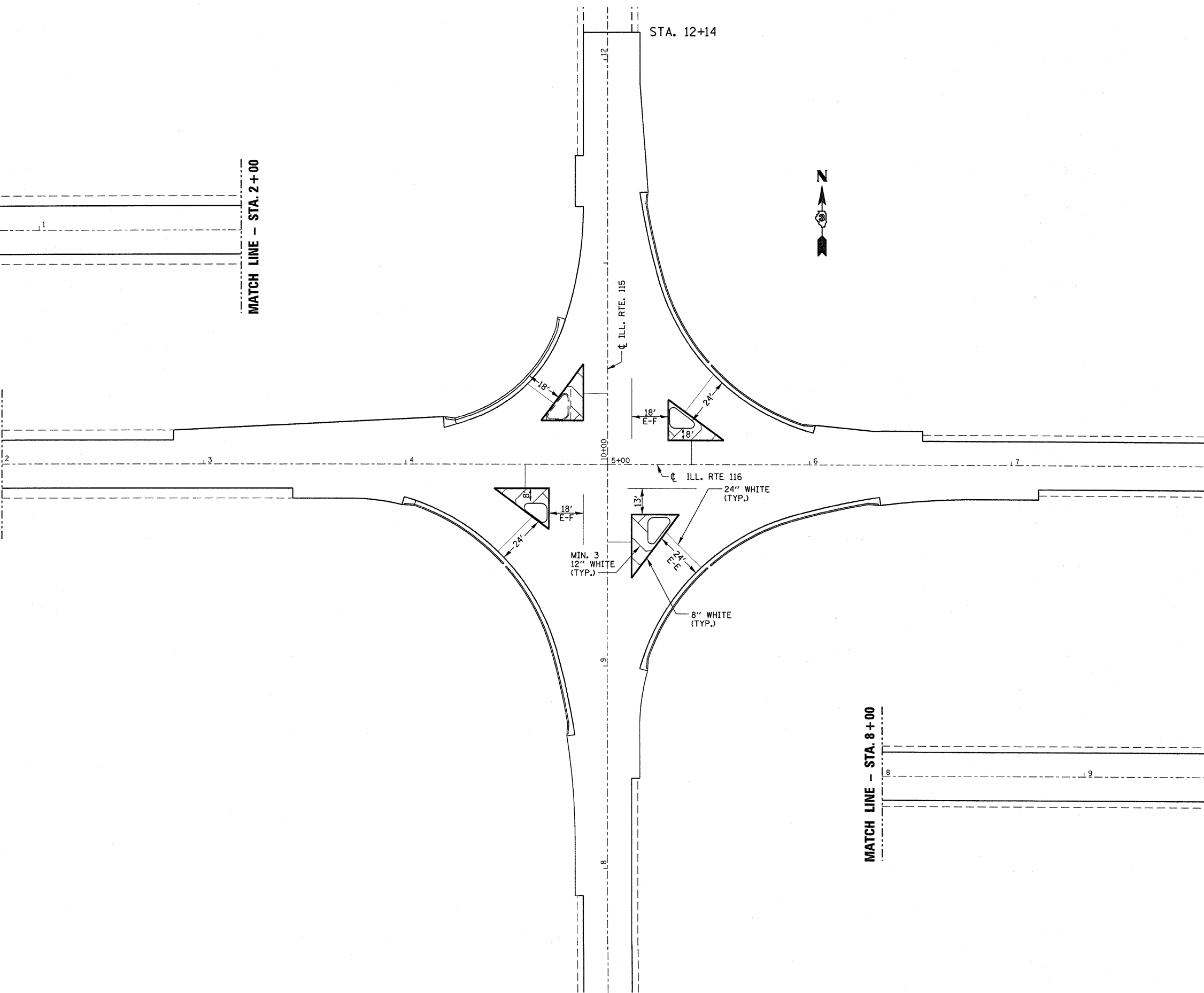


MATCH LINE - STA. 2+00

STA. 12+14



MATCH LINE - STA. 2+00



MATCH LINE - STA. 8+00

MATCH LINE - STA. 8+00

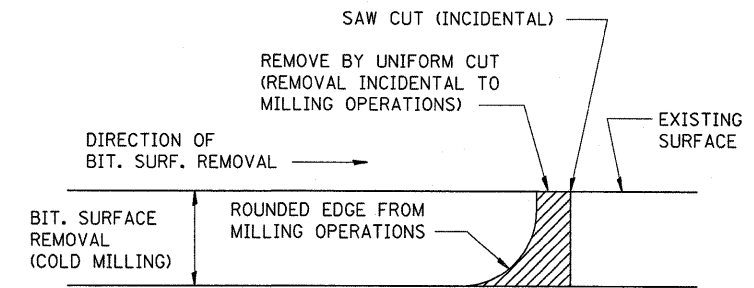
STA. 9+77

FILE NAME = c:\pwwork\VPWIDOT\SELLNR\d8173864\d366	USER NAME = sellnr 22-sht-details.dgn	DESIGNED - DRAWN -	REVISED - REVISED -
PLOT SCALE = 5/8" = 1' IN.	CHECKED -	REVISED -	REVISED -
PLOT DATE = Jan 29, 2010 - 11:43:57 AM	DATE -	REVISED -	REVISED -

STATE OF ILLINOIS
DEPARTMENT OF TRANSPORTATION

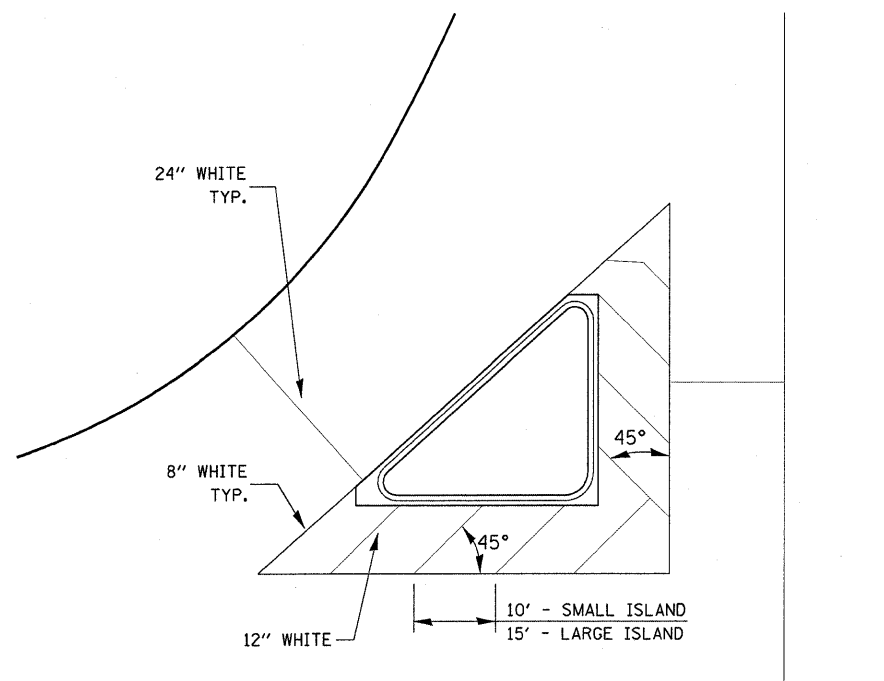
DETAILS	
SCALE: _____	SHEET NO. ___ OF ___ SHEETS STA. _____ TO STA. _____

F.A.P. RTE.	SECTION	COUNTY	TOTAL SHEETS	SHEET NO.
796	(105,106)RS-3	FORD	10	8
CONTRACT NO. 66922				
ILLINOIS FED. AID PROJECT				

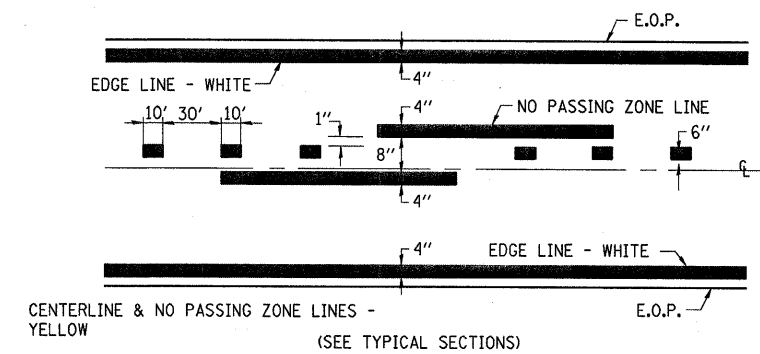


NOTE: WHEN MILLING OPERATIONS PRODUCE A ROUNDED EDGE, THEN A SAW CUT SHALL BE USED TO MANUFACTURE A PERPENDICULAR EDGE AS SHOWN IN THE DETAIL. THE ENGINEER SHALL BE THE SOLE JUDGE CONCERNING THE USE OF THIS DETAIL

BITUMINOUS DETAIL AT BUTT JOINTS

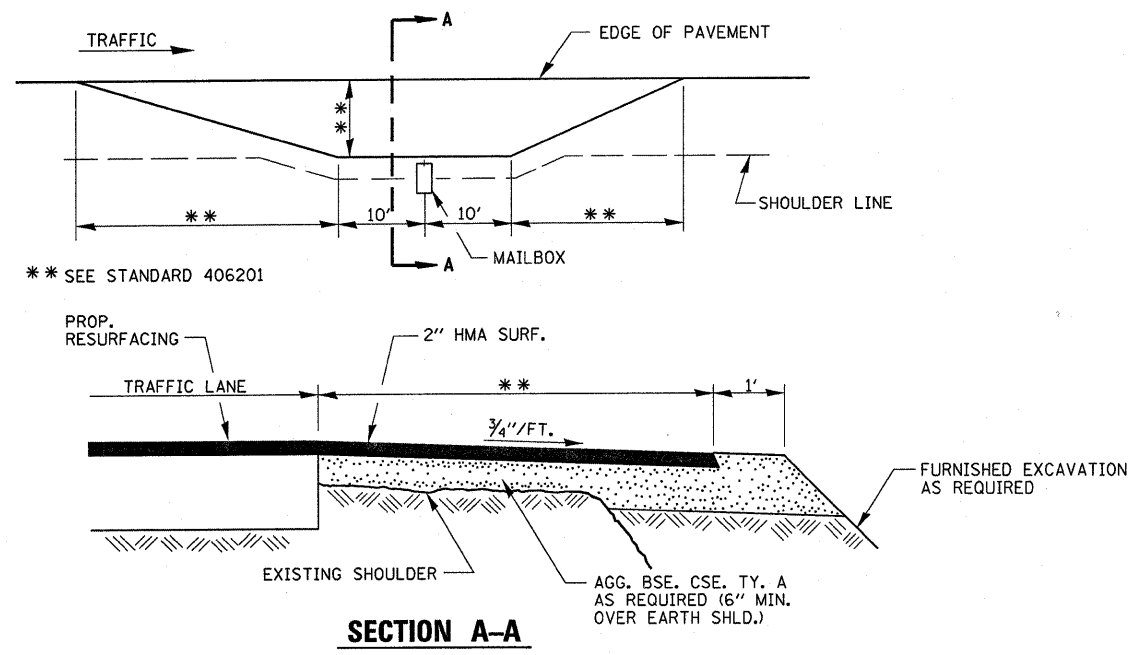


TYPICAL ISLAND

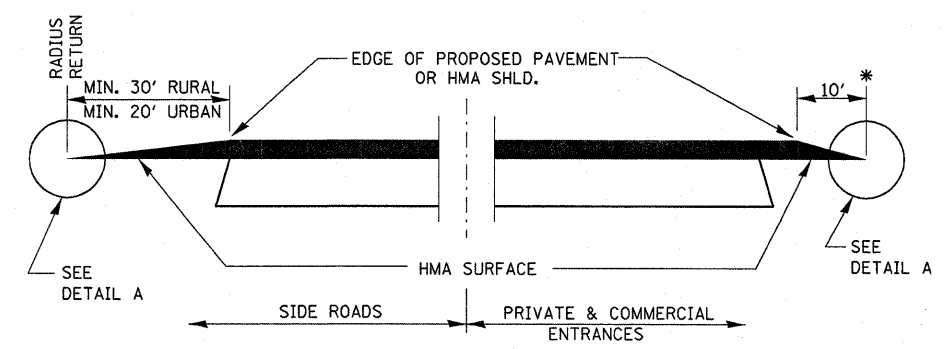


PAVEMENT MARKING

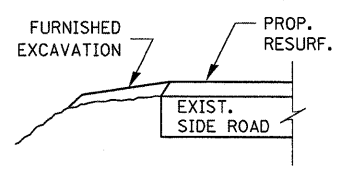
FILE NAME =	USER NAME = selnr	DESIGNED -	REVISED -	STATE OF ILLINOIS DEPARTMENT OF TRANSPORTATION	DETAILS			F.A.P. RTE.	SECTION	COUNTY	TOTAL SHEETS	SHEET NO.
ca:\pwr\work\PWIDOT\SELLNR\d0173864\d366	22-shr-details.dgn	DRAWN -	REVISED -		796	(105,106)RS-3	FORD	10	9			
	PLOT SCALE = 50,0539' / IN.	CHECKED -	REVISED -		SCALE: _____ SHEET NO. ____ OF ____ SHEETS STA. _____ TO STA. _____			CONTRACT NO. 66922				
	PLOT DATE = Jan 29, 2010 - 11:43:43 AM	DATE -	REVISED -		ILLINOIS FED. AID PROJECT							



RURAL MAILBOX TURNOUT DETAILS

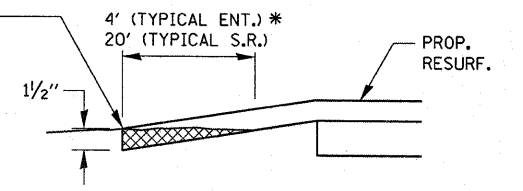


**SECTION A-A
DETAILS AT ENTRANCES & SIDE ROADS**

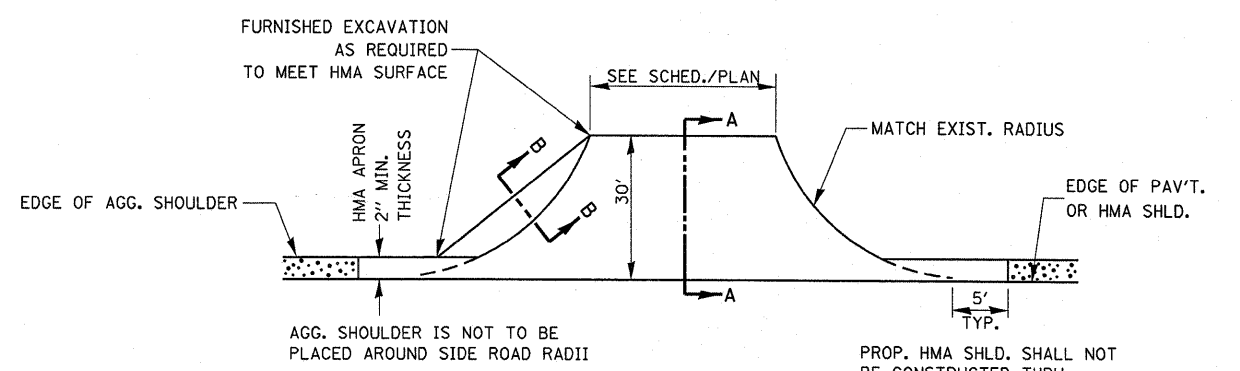


SECTION B-B

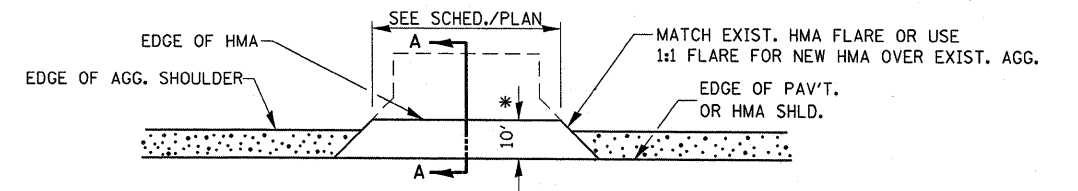
THE COST OF REMOVAL AT EXISTING HMA OR P.C.C. LOCATIONS SHALL BE PAID FOR PER SQ. YD. BY THE APPROPRIATE PAY ITEM. REMOVAL AT THE EXISTING AGG. LOCATIONS SHALL BE INCIDENTAL TO THE HMA. A-3 LOCATIONS SHALL BE FEATHER TAPERED.



DETAIL A



PLAN AT SIDE ROADS



PLAN AT PRIVATE & COMMERCIAL ENTRANCES

(DO NOT RESURFACE FIELD ENTRANCES)

* PROPOSED HMA RESURFACING AT PUBLIC EDUCATIONAL FACILITY ENTRANCES SHALL BE EXTENDED TO THE RIGHT-OF-WAY LIMITS.

FILE NAME =	USER NAME = sellnr	DESIGNED -	REVISED -
ci\pw_work\PMIDOT\SELLNR\d8173864\d366	22-shd-details.dgn	DRAWN -	REVISED -
	PLOT SCALE = 49,9471' / IN.	CHECKED -	REVISED -
	PLOT DATE = Jan 29, 2010 - 11:43:32 AM	DATE -	REVISED -

**STATE OF ILLINOIS
DEPARTMENT OF TRANSPORTATION**

DETAILS	
SCALE: _____	SHEET NO. ___ OF ___ SHEETS STA. _____ TO STA. _____

F.A.P. RTE.	SECTION	COUNTY	TOTAL SHEETS	SHEET NO.
796	(105,106)RS-3	FORD	10	10
CONTRACT NO. 66922				
ILLINOIS FED. AID PROJECT				