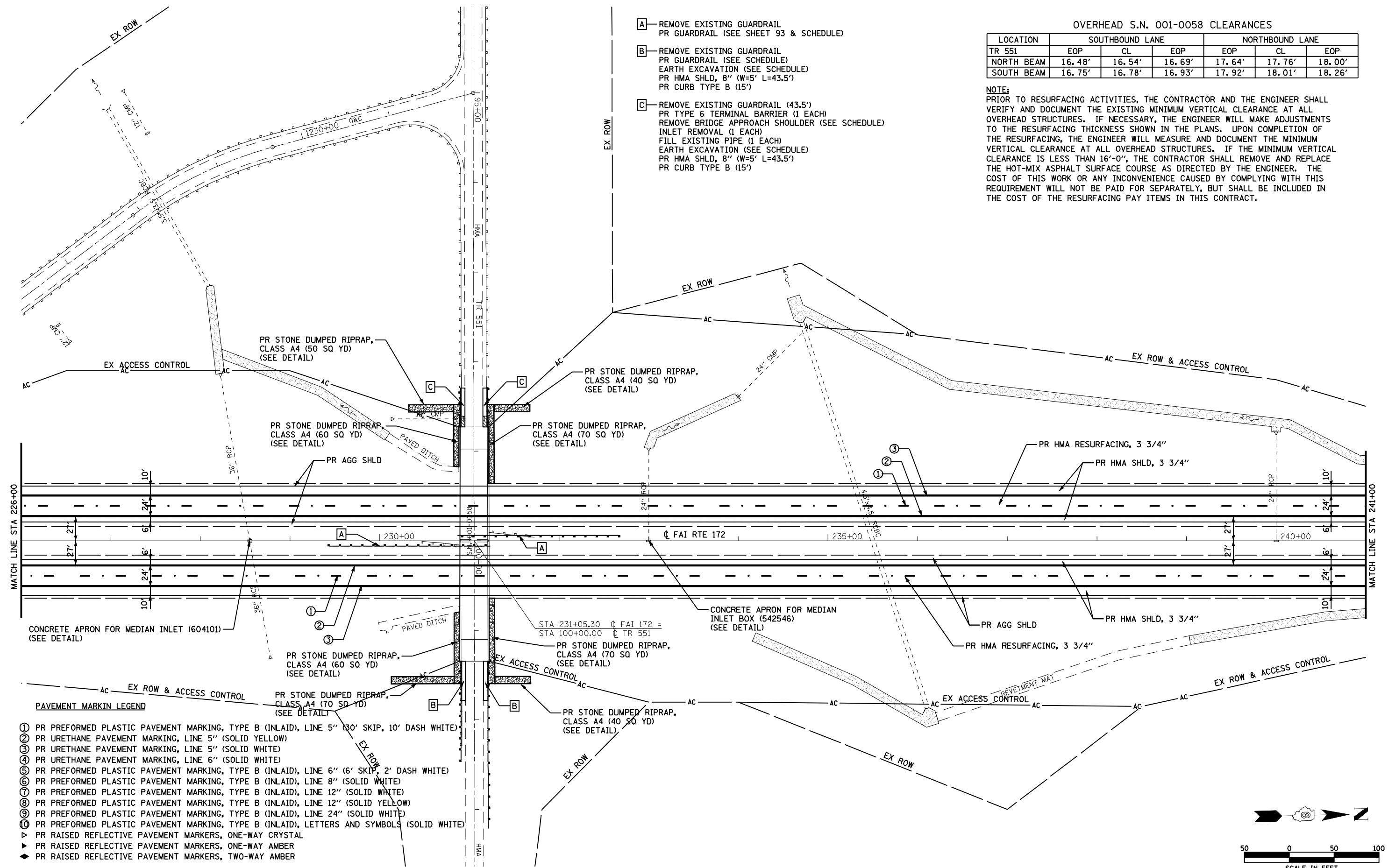


OVERHEAD S.N. 001-0058 CLEARANCES

LOCATION	SOUTHBOUND LANE			NORTHBOUND LANE		
	EOP	CL	EOP	EOP	CL	EOP
TR 551	16.48'	16.54'	16.69'	17.64'	17.76'	18.00'
NORTH BEAM	16.75'	16.78'	16.93'	17.92'	18.01'	18.26'

NOTE:
PRIOR TO RESURFACING ACTIVITIES, THE CONTRACTOR AND THE ENGINEER SHALL VERIFY AND DOCUMENT THE EXISTING MINIMUM VERTICAL CLEARANCE AT ALL OVERHEAD STRUCTURES. IF NECESSARY, THE ENGINEER WILL MAKE ADJUSTMENTS TO THE RESURFACING THICKNESS SHOWN IN THE PLANS. UPON COMPLETION OF THE RESURFACING, THE ENGINEER WILL MEASURE AND DOCUMENT THE MINIMUM VERTICAL CLEARANCE AT ALL OVERHEAD STRUCTURES. IF THE MINIMUM VERTICAL CLEARANCE IS LESS THAN 16'-0", THE CONTRACTOR SHALL REMOVE AND REPLACE THE HOT-MIX ASPHALT SURFACE COURSE AS DIRECTED BY THE ENGINEER. THE COST OF THIS WORK OR ANY INCONVENIENCE CAUSED BY COMPLYING WITH THIS REQUIREMENT WILL NOT BE PAID FOR SEPARATELY, BUT SHALL BE INCLUDED IN THE COST OF THE RESURFACING PAY ITEMS IN THIS CONTRACT.

- A** REMOVE EXISTING GUARDRAIL
PR GUARDRAIL (SEE SHEET 93 & SCHEDULE)
- B** REMOVE EXISTING GUARDRAIL
PR GUARDRAIL (SEE SCHEDULE)
EARTH EXCAVATION (SEE SCHEDULE)
PR HMA SHLD, 8" (W=5' L=43.5')
PR CURB TYPE B (15')
- C** REMOVE EXISTING GUARDRAIL (43.5')
PR TYPE 6 TERMINAL BARRIER (1 EACH)
REMOVE BRIDGE APPROACH SHOULDER (SEE SCHEDULE)
INLET REMOVAL (1 EACH)
FILL EXISTING PIPE (1 EACH)
EARTH EXCAVATION (SEE SCHEDULE)
PR HMA SHLD, 8" (W=5' L=43.5')
PR CURB TYPE B (15')



- PAVEMENT MARKIN LEGEND**
- ① PR PREFORMED PLASTIC PAVEMENT MARKING, TYPE B (INLAID), LINE 5" (30' SKIP, 10' DASH WHITE)
 - ② PR URETHANE PAVEMENT MARKING, LINE 5" (SOLID YELLOW)
 - ③ PR URETHANE PAVEMENT MARKING, LINE 5" (SOLID WHITE)
 - ④ PR URETHANE PAVEMENT MARKING, LINE 6" (SOLID WHITE)
 - ⑤ PR PREFORMED PLASTIC PAVEMENT MARKING, TYPE B (INLAID), LINE 6" (6' SKIP, 2' DASH WHITE)
 - ⑥ PR PREFORMED PLASTIC PAVEMENT MARKING, TYPE B (INLAID), LINE 8" (SOLID WHITE)
 - ⑦ PR PREFORMED PLASTIC PAVEMENT MARKING, TYPE B (INLAID), LINE 12" (SOLID WHITE)
 - ⑧ PR PREFORMED PLASTIC PAVEMENT MARKING, TYPE B (INLAID), LINE 12" (SOLID YELLOW)
 - ⑨ PR PREFORMED PLASTIC PAVEMENT MARKING, TYPE B (INLAID), LINE 24" (SOLID WHITE)
 - Ⓐ PR PREFORMED PLASTIC PAVEMENT MARKING, TYPE B (INLAID), LETTERS AND SYMBOLS (SOLID WHITE)
 - ▽ PR RAISED REFLECTIVE PAVEMENT MARKERS, ONE-WAY CRYSTAL
 - ▲ PR RAISED REFLECTIVE PAVEMENT MARKERS, ONE-WAY AMBER
 - ◆ PR RAISED REFLECTIVE PAVEMENT MARKERS, TWO-WAY AMBER

