

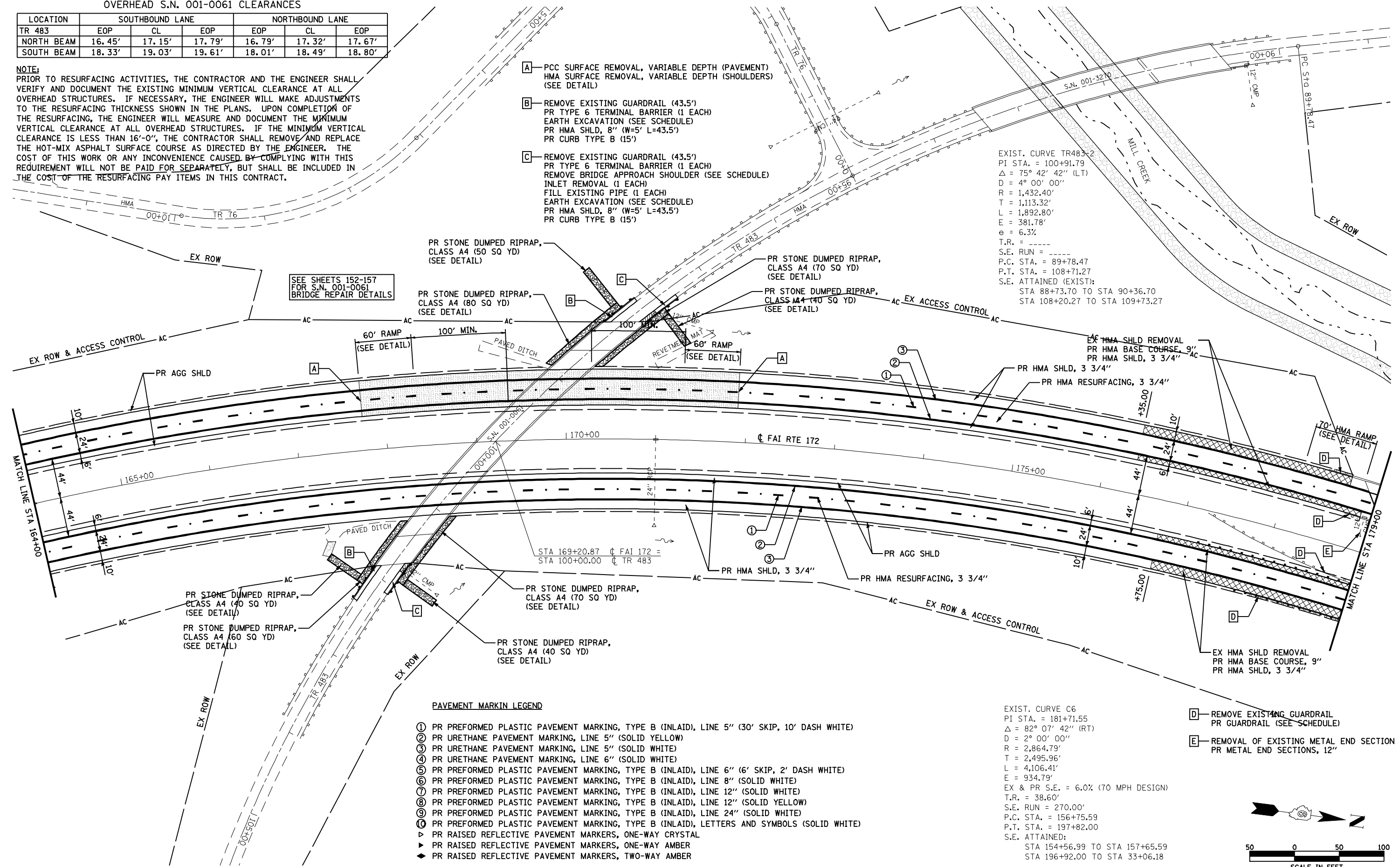
OVERHEAD S.N. 001-0061 CLEARANCES

LOCATION	SOUTHBOUND LANE			NORTHBOUND LANE		
	EOP	CL	EOP	EOP	CL	EOP
TR 483						
NORTH BEAM	16.45'	17.15'	17.79'	16.79'	17.32'	17.67'
SOUTH BEAM	18.33'	19.03'	19.61'	18.01'	18.49'	18.80'

**NOTE:**  
PRIOR TO RESURFACING ACTIVITIES, THE CONTRACTOR AND THE ENGINEER SHALL VERIFY AND DOCUMENT THE EXISTING MINIMUM VERTICAL CLEARANCE AT ALL OVERHEAD STRUCTURES. IF NECESSARY, THE ENGINEER WILL MAKE ADJUSTMENTS TO THE RESURFACING THICKNESS SHOWN IN THE PLANS. UPON COMPLETION OF THE RESURFACING, THE ENGINEER WILL MEASURE AND DOCUMENT THE MINIMUM VERTICAL CLEARANCE AT ALL OVERHEAD STRUCTURES. IF THE MINIMUM VERTICAL CLEARANCE IS LESS THAN 16'-0", THE CONTRACTOR SHALL REMOVE AND REPLACE THE HOT-MIX ASPHALT SURFACE COURSE AS DIRECTED BY THE ENGINEER. THE COST OF THIS WORK OR ANY INCONVENIENCE CAUSED BY COMPLYING WITH THIS REQUIREMENT WILL NOT BE PAID FOR SEPARATELY, BUT SHALL BE INCLUDED IN THE COST OF THE RESURFACING PAY ITEMS IN THIS CONTRACT.

- A**— PCC SURFACE REMOVAL, VARIABLE DEPTH (PAVEMENT)  
HMA SURFACE REMOVAL, VARIABLE DEPTH (SHOULDERS)  
(SEE DETAIL)
- B**— REMOVE EXISTING GUARDRAIL (43.5')  
PR TYPE 6 TERMINAL BARRIER (1 EACH)  
EARTH EXCAVATION (SEE SCHEDULE)  
PR HMA SHLD, 8" (W=5' L=43.5')  
PR CURB TYPE B (15')
- C**— REMOVE EXISTING GUARDRAIL (43.5')  
PR TYPE 6 TERMINAL BARRIER (1 EACH)  
REMOVE BRIDGE APPROACH SHOULDER (SEE SCHEDULE)  
INLET REMOVAL (1 EACH)  
FILL EXISTING PIPE (1 EACH)  
EARTH EXCAVATION (SEE SCHEDULE)  
PR HMA SHLD, 8" (W=5' L=43.5')  
PR CURB TYPE B (15')

EXIST. CURVE TR483-2  
PI STA. = 100+91.79  
Δ = 75° 42' 42" (LT)  
D = 4° 00' 00"  
R = 1,432.40'  
T = 1,113.32'  
L = 1,892.80'  
E = 381.78'  
e = 6.3%  
T.R. = -----  
S.E. RUN = -----  
P.C. STA. = 89+78.47  
P.T. STA. = 108+71.27  
S.E. ATTAINED (EXIST):  
STA 88+73.70 TO STA 90+36.70  
STA 108+20.27 TO STA 109+73.27



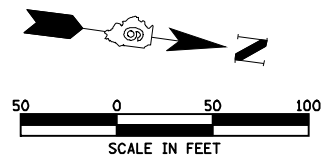
SEE SHEETS 152-157 FOR S.N. 001-0061 BRIDGE REPAIR DETAILS

PAVEMENT MARKIN LEGEND

- ① PR PREFORMED PLASTIC PAVEMENT MARKING, TYPE B (INLAID), LINE 5" (30' SKIP, 10' DASH WHITE)
- ② PR URETHANE PAVEMENT MARKING, LINE 5" (SOLID YELLOW)
- ③ PR URETHANE PAVEMENT MARKING, LINE 5" (SOLID WHITE)
- ④ PR URETHANE PAVEMENT MARKING, LINE 6" (SOLID WHITE)
- ⑤ PR PREFORMED PLASTIC PAVEMENT MARKING, TYPE B (INLAID), LINE 6" (6' SKIP, 2' DASH WHITE)
- ⑥ PR PREFORMED PLASTIC PAVEMENT MARKING, TYPE B (INLAID), LINE 8" (SOLID WHITE)
- ⑦ PR PREFORMED PLASTIC PAVEMENT MARKING, TYPE B (INLAID), LINE 12" (SOLID WHITE)
- ⑧ PR PREFORMED PLASTIC PAVEMENT MARKING, TYPE B (INLAID), LINE 12" (SOLID YELLOW)
- ⑨ PR PREFORMED PLASTIC PAVEMENT MARKING, TYPE B (INLAID), LINE 24" (SOLID WHITE)
- ⑩ PR PREFORMED PLASTIC PAVEMENT MARKING, TYPE B (INLAID), LETTERS AND SYMBOLS (SOLID WHITE)
- ▲ PR RAISED REFLECTIVE PAVEMENT MARKERS, ONE-WAY CRYSTAL
- ▶ PR RAISED REFLECTIVE PAVEMENT MARKERS, ONE-WAY AMBER
- ◆ PR RAISED REFLECTIVE PAVEMENT MARKERS, TWO-WAY AMBER

EXIST. CURVE C6  
PI STA. = 181+71.55  
Δ = 82° 07' 42" (RT)  
D = 2° 00' 00"  
R = 2,864.79'  
T = 2,495.96'  
L = 4,106.41'  
E = 934.79'  
EX & PR S.E. = 6.0% (70 MPH DESIGN)  
T.R. = 38.60'  
S.E. RUN = 270.00'  
P.C. STA. = 156+75.59  
P.T. STA. = 197+82.00  
S.E. ATTAINED:  
STA 154+56.99 TO STA 157+65.59  
STA 196+92.00 TO STA 33+06.18

- D**— REMOVE EXISTING GUARDRAIL  
PR GUARDRAIL (SEE SCHEDULE)
- E**— REMOVAL OF EXISTING METAL END SECTION  
PR METAL END SECTIONS, 12"



FILE NAME =	USER NAME = laughlinr1	DESIGNED -	REVISED -	<b>STATE OF ILLINOIS DEPARTMENT OF TRANSPORTATION</b>	<b>FAI RTE 172 PLAN</b>		F.A.I. RTE.	SECTION	COUNTY	TOTAL SHEETS	SHEET NO.	
es:\pwwork\pwwid001\LAUGHLINR1\0182983\070_Plan.dgn		DRAWN -	REVISED -		SCALE: 1"=50'	SHEET NO. 32 OF 52 SHEETS	STA. 164+00 TO STA. 179+00	172	1-(1,2,3,4,5)RS	ADAMS	165	70
		CHECKED -	REVISED -		CONTRACT NO. 72A09							
		DATE -	REVISED -		FED. ROAD DIST. NO. ILLINOIS FED. AID PROJECT							