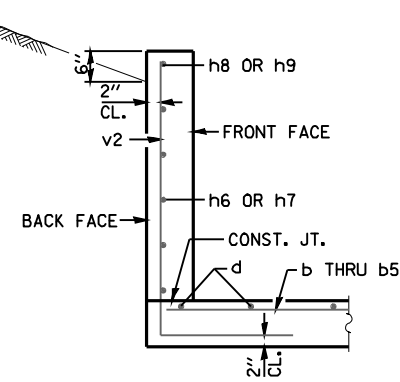
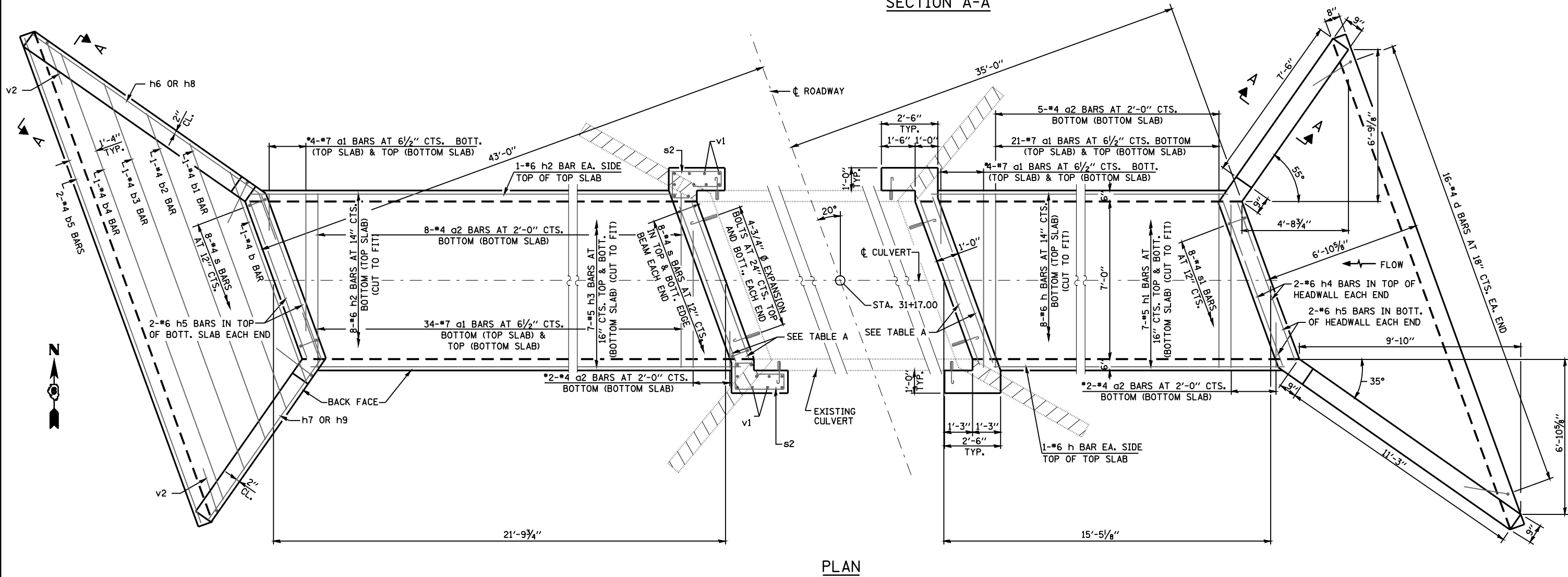


SECTION THRU HEADWALL

NOTE:
HATCHED AREA INDICATES CONCRETE REMOVAL.
COST INCLUDED WITH CONCRETE REMOVAL.



SECTION A-A



PLAN

QUANTITIES (WEST EXTENSION)

ITEM	UNIT	QTY.
CONCRETE BOX CULVERTS	CU. YD.	24.1
EXPANSION BOLTS, 3/4" Ø	EA.	16
REINFORCEMENT BARS	POUND	4,550
CONCRETE REMOVAL	CU. YD.	3.0

*ORDER a1 & a2 FULL LENGTH, CUT TO FIT SKEW AND USE REMAINDER IN OPPOSITE END. ALTERNATE HOOK OF a1 BARS FOR PLACEMENT.

TABLE A

LOCATION	NO. OF BARS	BAR
TOP OF TOP EDGE BEAM	2	h4
BOTT. OF TOP EDGE BEAM	2	h5
TOP OF BOTT. EDGE BEAM	2	h5
BOTT. OF BOTT. EDGE BEAM	2	h4

QUANTITIES (EAST EXTENSION)

ITEM	UNIT	QTY.
CONCRETE BOX CULVERTS	CU. YD.	20.1
EXPANSION BOLTS, 3/4" Ø	EA.	16
REINFORCEMENT BARS	POUND	3,640
CONCRETE REMOVAL	CU. YD.	3.0

FILE NAME =	USER NAME = laughlinr1	DESIGNED -	REVISED -
es:\pwork\PWIDOT\LAUGHLINRL\0182983\091-sht-Box Culvert Details.dgn		DRAWN -	REVISED -
PLOT SCALE = 100.0000' / IN.		CHECKED -	REVISED -
PLOT DATE = Feb-01-2010 10:54:48AM		DATE -	REVISED -

STATE OF ILLINOIS
DEPARTMENT OF TRANSPORTATION

BOX CULVERT DETAILS
IL 57 STATION 31+17.0

SCALE: none SHEET NO. 1 OF 2 SHEETS STA. TO STA.

F.A.I. RTE.	SECTION	COUNTY	TOTAL SHEETS	SHEET NO.
172	1-(1,2,3,4,5)RS	ADAMS	165	91
CONTRACT NO. 72A09				
FED. ROAD DIST. NO. ILLINOIS FED. AID PROJECT				