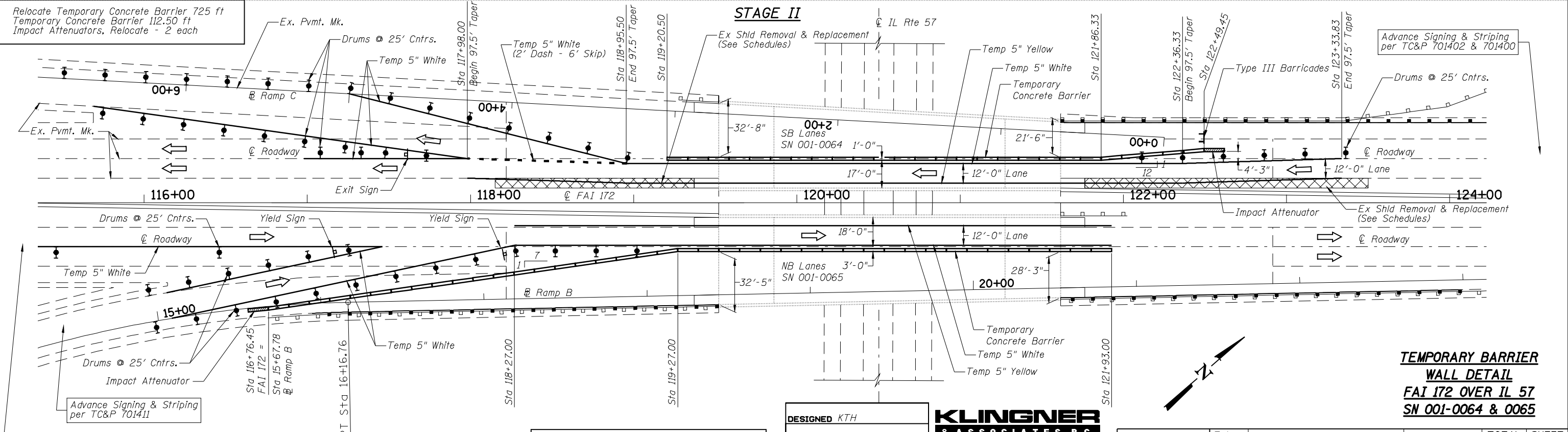
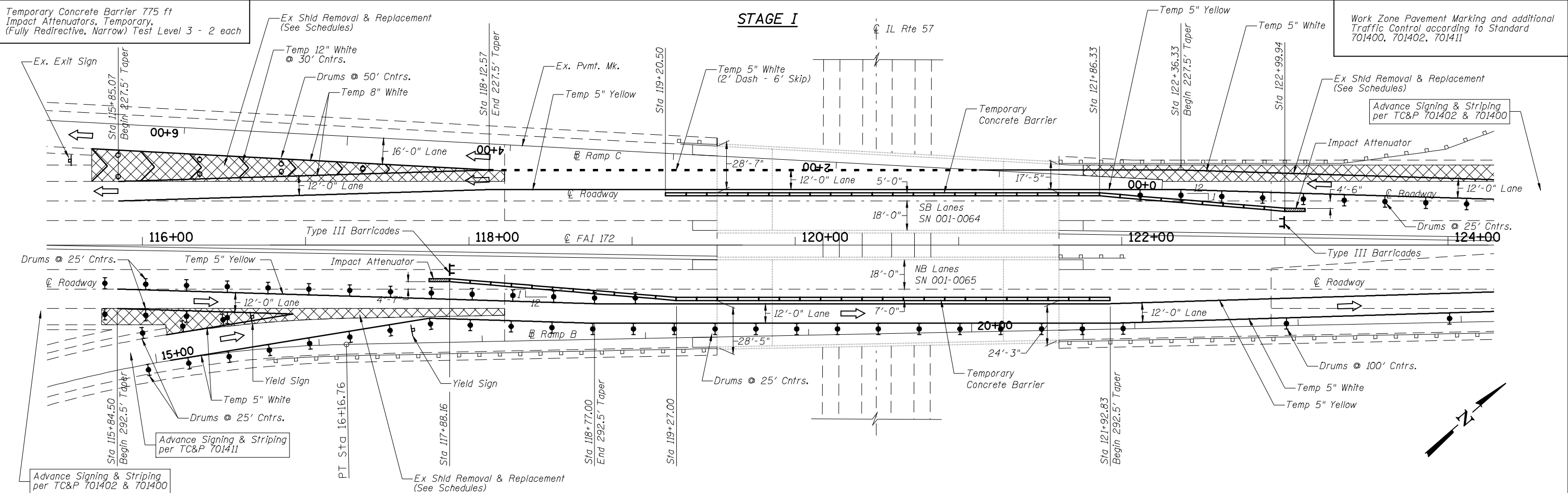


Feb-01-2010 10:55:18AM



Advance Signing & Striping per TC&P 701402 & 701400

Work Zone Pavement Marking and additional Traffic Control according to Standard 701400, 701402, 701411

DESIGNED KTH  
 CHECKED ADL  
 DRAWN KTH  
 CHECKED ADL

**KLINGNER & ASSOCIATES, P.C.**  
 Engineers • Architects • Surveyors

188 North 24th Street, Quincy, IL 62450  
 6181 Passerelli Road, Hannibal, MO 63476  
 618 N. 4th Street, Suite 100, Burlington, IL 61731  
 49 North Prairie Street, Galena, IL 61734

Ph: (202) 223-2610 Fax: (202) 223-2683  
 Ph: (572) 221-8800 Fax: (572) 221-8802  
 Ph: (319) 753-3636 Fax: (319) 753-3626  
 Ph: (309) 342-4842 Fax: (309) 341-3781

www.klingner.com  
 STATE OF ILLINOIS DESIGN FIRM • 1842738

SHEET NO. 2 17 SHEETS	F.A. RTE.	SECTION	COUNTY	TOTAL SHEETS	SHEET NO.
	172	1-3HB	ADAMS	165	103
FED. ROAD DIST. NO.			ILLINOIS FED. AID PROJECT		
CONTRACT NO. 72A09					

**TEMPORARY BARRIER WALL DETAIL**  
**FAI 172 OVER IL 57**  
**SN 001-0064 & 0065**