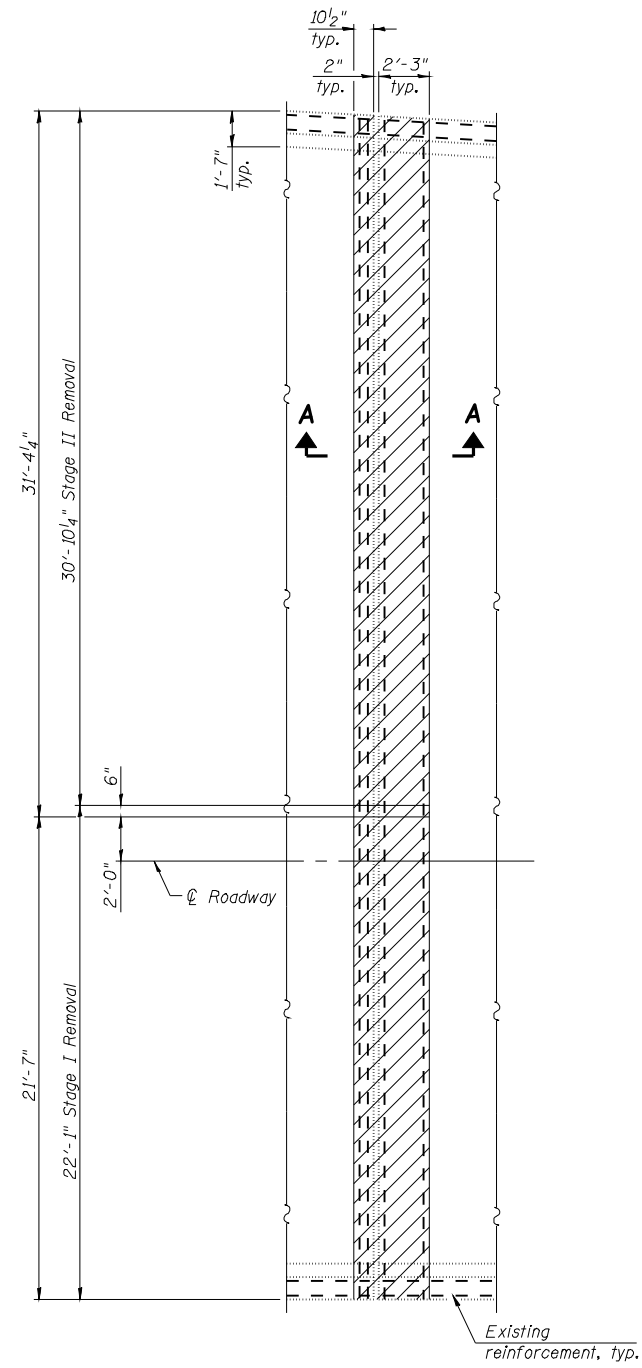
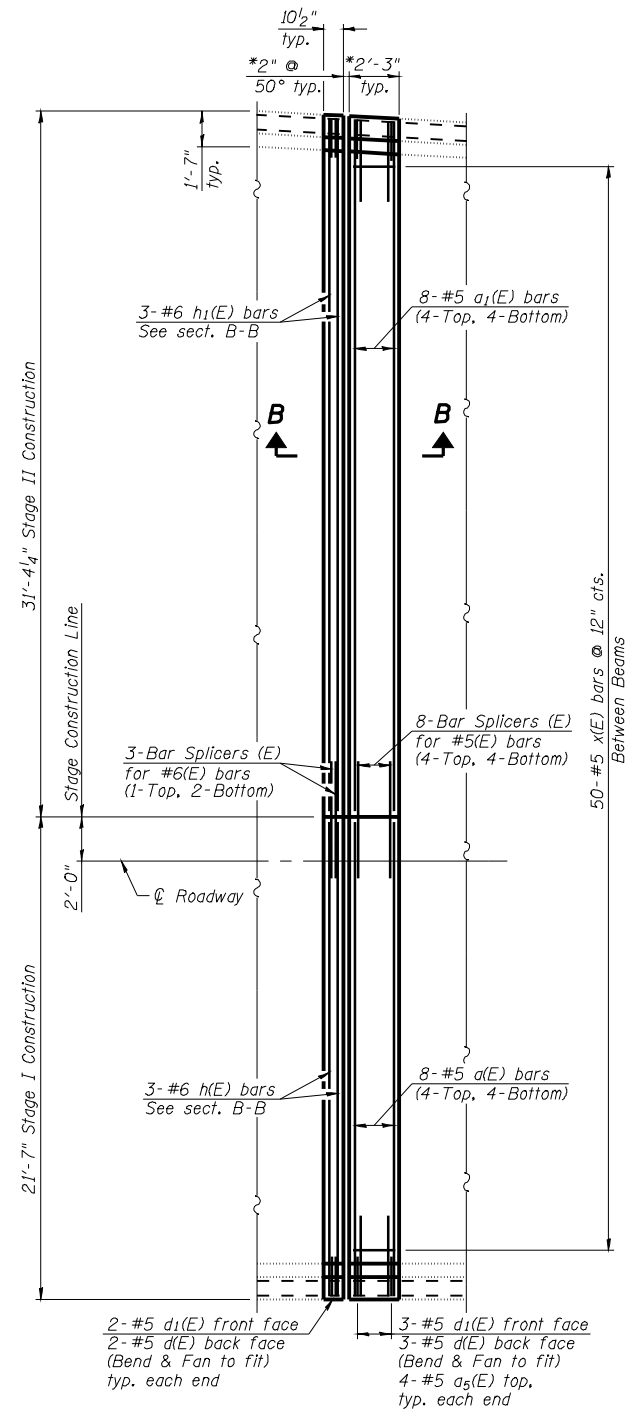


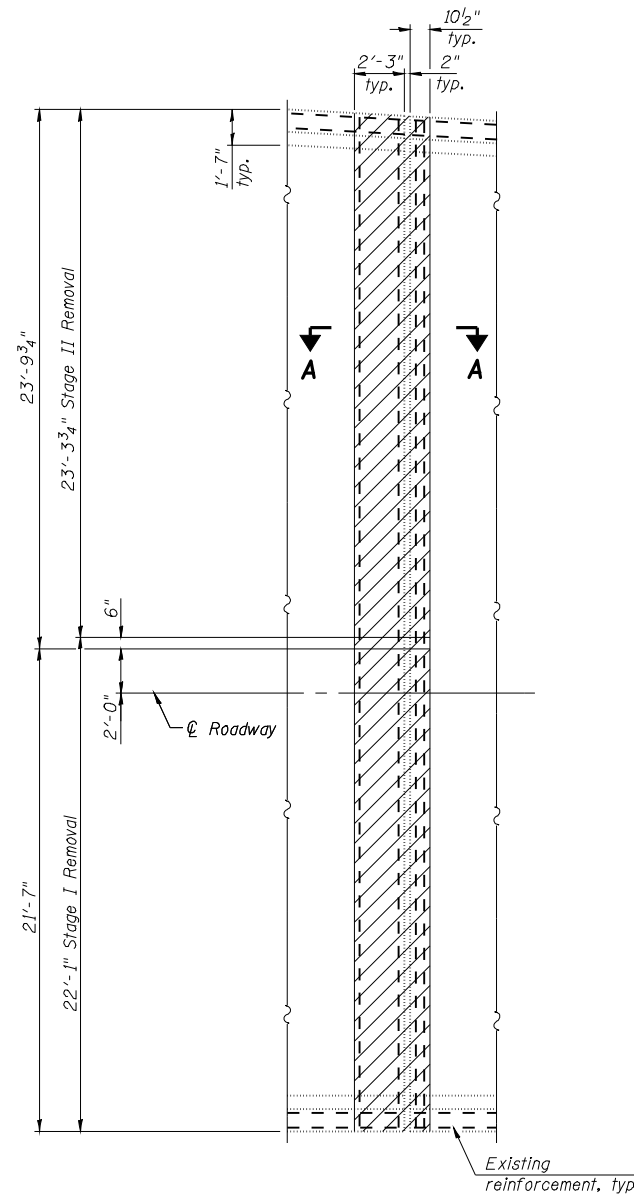
Notes:
 Hatched areas indicate concrete removal.
 For Sections A-A & B-B, bar details & Bill of Material see sheet No. 10 of 17.



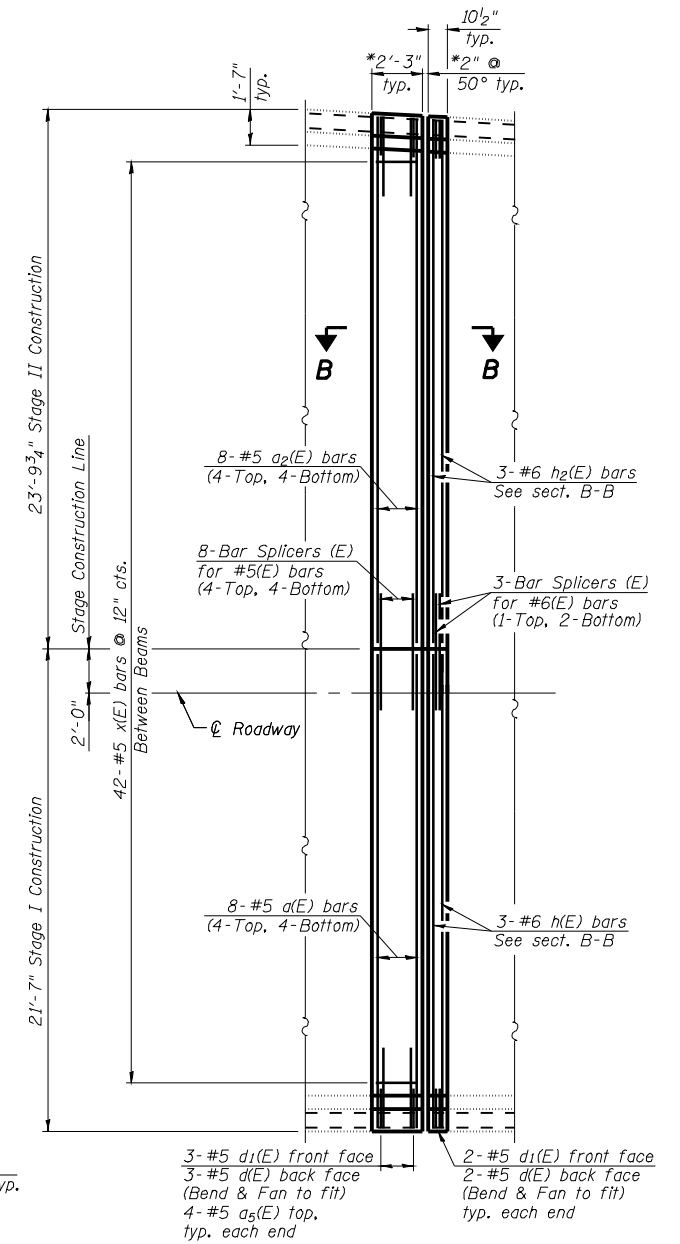
PARTIAL REMOVAL PLAN
 (West Abutment SN 001-0064)



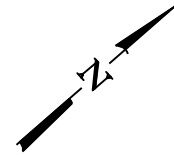
PARTIAL PROPOSED PLAN
 (West Abutment SN 001-0064)



PARTIAL REMOVAL PLAN
 (East Abutment SN 001-0064)



PARTIAL PROPOSED PLAN
 (East Abutment SN 001-0064)



SUPERSTRUCTURE DETAILS
FAI 172 OVER IL 57
SN 001-0064 & 0065

DESIGNED	KTH
CHECKED	ADL
DRAWN	KTH
CHECKED	ADL

KLINGNER & ASSOCIATES, P.C.
 Engineers - Architects - Surveyors
 150 North 21st Street, Barrington, IL 60010-3238
 4300 Paces Green, Hunt Valley, MD 21086
 400 N. 4th Street, Suite 100, Burlington, IL 60109-7536
 111 West 1st Street, Galesburg, IL 62541
 Internet Address: www.klingner.com
 Ph: (815) 223-3238 Fax: (815) 223-3883
 Ph: (410) 223-0020 Fax: (410) 223-0822
 Ph: (618) 753-9536 Fax: (618) 752-3885
 Ph: (309) 342-4842 Fax: (309) 346-3788
 STATE OF ILLINOIS DESIGN FIRM # 1842738

SHEET NO. 7	F.A. RTE.	SECTION	COUNTY	TOTAL SHEETS	SHEET NO.
	172	1-3HB	ADAMS	165	108
17 SHEETS	CONTRACT NO. 72A09				
FED. ROAD DIST. NO.		ILLINOIS FED. AID PROJECT			