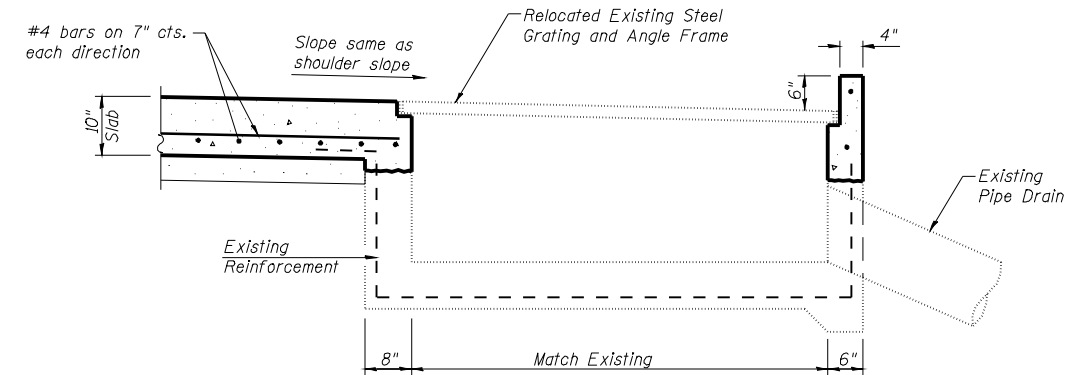
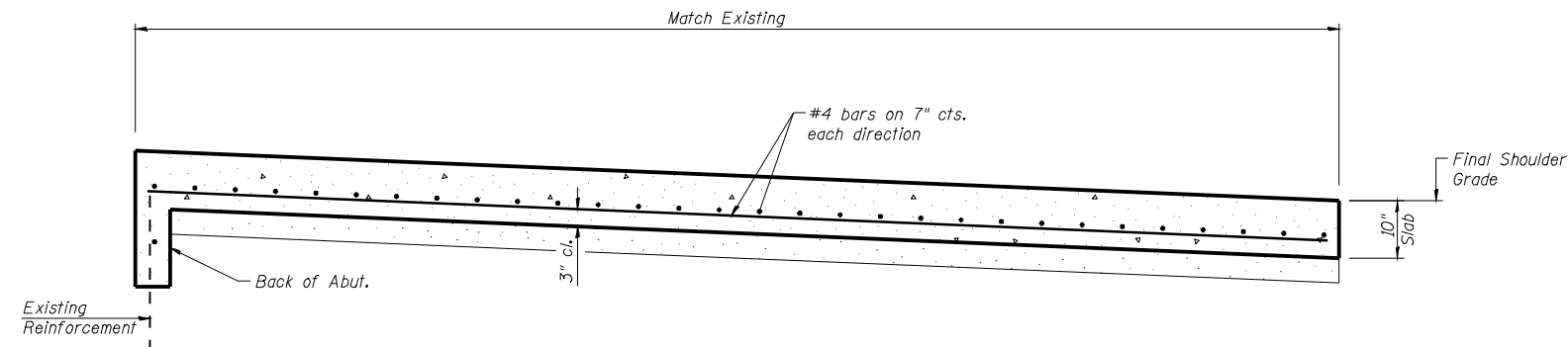


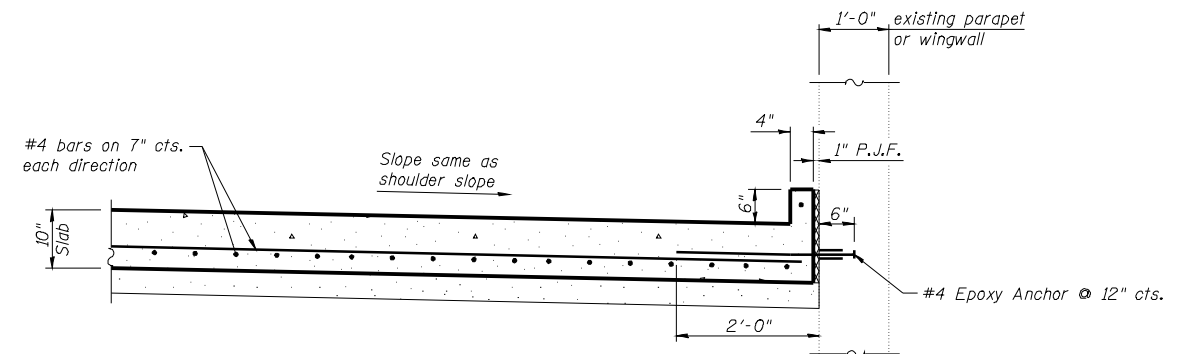
**SECTION A-A**



**SECTION B-B**



**SECTION D-D**



**SECTION C-C**

**NOTES**

See plans for location of bridge approach shoulder pavement.

The lengths of #4 bars used in the approach shoulder pavement shall be as required to accommodate the length, width and skew of the slab.

Bridge approach shoulder pavement will be measured in place and paid for in square yards as P.C. CONCRETE BRIDGE APPROACH SHOULDER PAVEMENT which shall include the cost of subgrade preparation, Sub base Granular Material, Type A, reinforcement and P.J.F. In computing the area for payment, a deduction will be made for the area displaced by the inside of Inlet.

Existing reinforcement bars shown are to be cleaned and incorporated into the new construction.

**BRIDGE APPROACH SHOULDER PAVEMENT  
FAI 172 OVER IL 57  
SN 001-0064 & 0065**

DESIGNED	KTH
CHECKED	ADL
DRAWN	KTH
CHECKED	ADL

**KLINGNER & ASSOCIATES, P.C.**  
Engineers - Architects - Surveyors  
165 North 21st Street, Barrington, IL 60010-3233-3883  
4308 Paces Grand, Hunt, Maryland, MD 20638  
400 N. 4th Street, Suite 100, Burlington, IL 60109-7536-3605  
111 North Prairie Street, Galesburg, IL 61204-3422-4042  
www.klingner.com  
STATE OF ILLINOIS DESIGN FIRM # 1842738

SHEET NO. 15 17 SHEETS	F.A. RTE. 172	SECTION 1-4B	COUNTY ADAMS	TOTAL SHEETS 165	SHEET NO. 116
	CONTRACT NO. 72A09			ILLINOIS FED. AID PROJECT	