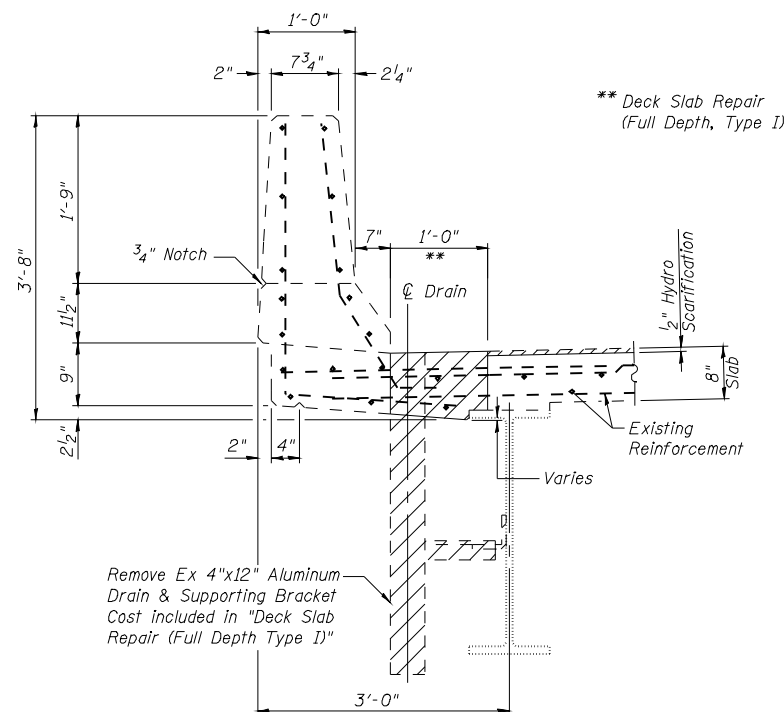
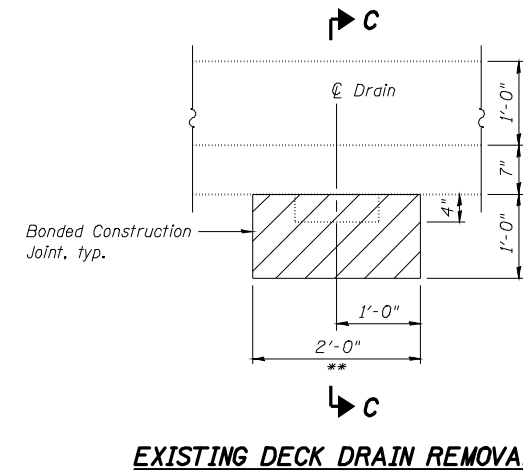


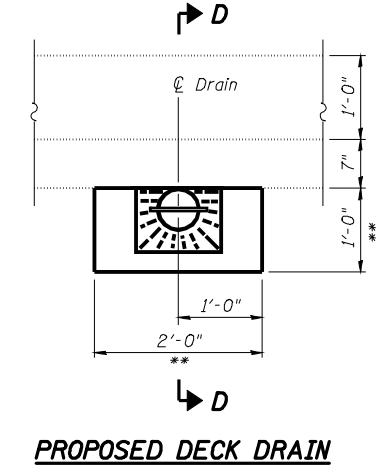
**SECTION THRU EXISTING PARAPET**



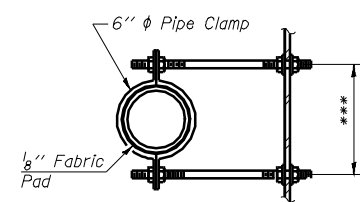
**SECTION C-C  
(East Parapet)**



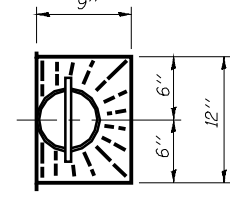
**EXISTING DECK DRAIN REMOVAL**



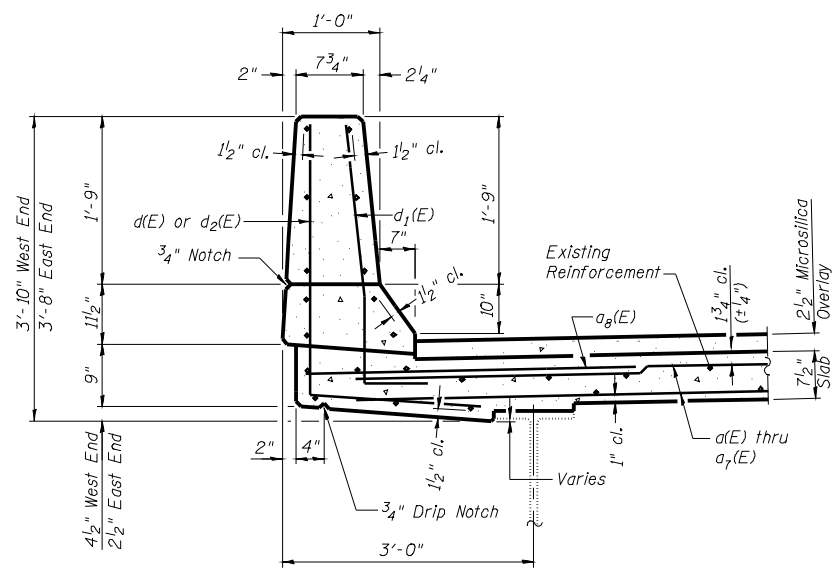
**PROPOSED DECK DRAIN**



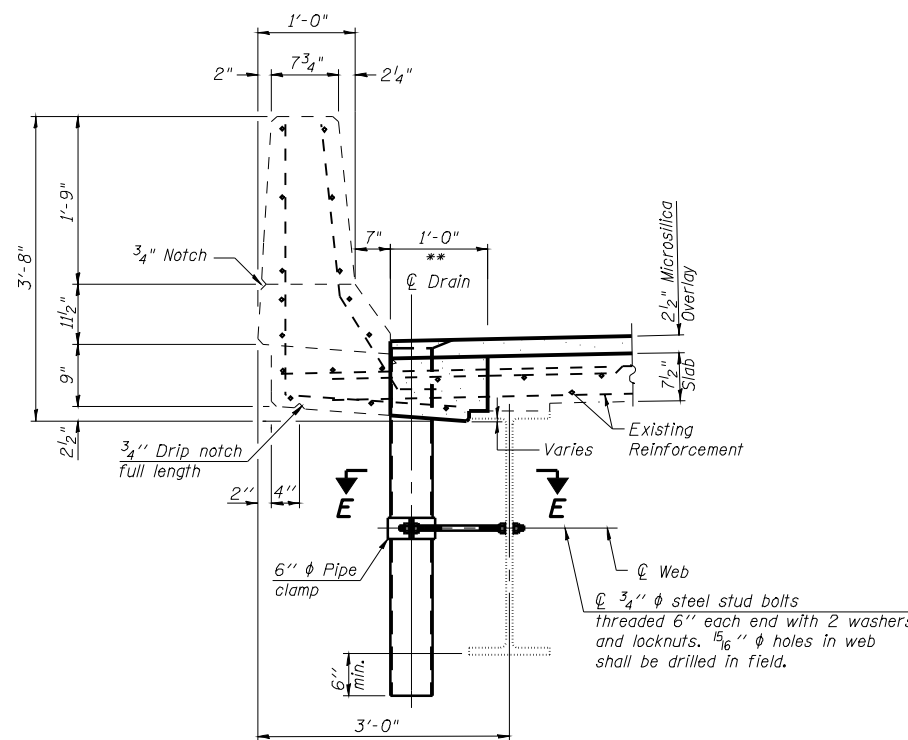
**SECTION E-E  
\*\*\*Dimension as required by Pipe Clamp**



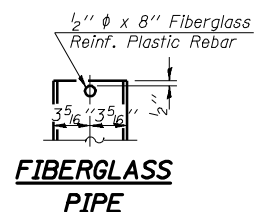
**TOP PLAN**



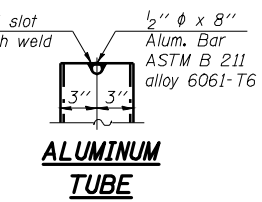
**SECTION THRU PARAPET**



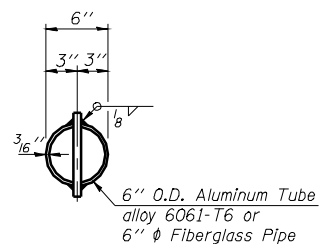
**SECTION D-D  
(East Parapet)**



**FIBERGLASS PIPE**



**ALUMINUM TUBE**



**TOP PLAN  
(Showing Aluminum Tube)**

Note:  
Fiberglass pipe shall conform to ASTM D 2996, with short-time rupture strength hoop tensile stress of 30,000 p.s.i. minimum.

Notes:  
Hatched areas indicate concrete sections to be removed and replaced. Perimeters of concrete removal areas shall be saw cut 3/4" prior to the removal of concrete.  
Existing reinforcement bars shown are to be cleaned and incorporated into the new construction.

DESIGNED	KTH
CHECKED	ADL
DRAWN	KTH
CHECKED	ADL

**KLINGNER & ASSOCIATES, P.C.**  
Engineers - Architects - Surveyors  
150 N. 3rd Street, Quincy, IL 62450  
150 N. 3rd Street, Suite 100, Quincy, IL 62450  
150 N. 3rd Street, Suite 100, Quincy, IL 62450  
150 N. 3rd Street, Suite 100, Quincy, IL 62450  
STATE OF ILLINOIS DESIGN FIRM # 1842738

**ABUTMENT DETAILS  
FAI 172 OVER MILL CREEK  
SN 001-0062 & 0063**

SHEET NO. 11 17 SHEETS	F.A. RTE.	SECTION	COUNTY	TOTAL SHEETS	SHEET NO.
	172	1-4B-1	ADAMS	165	145
FED. ROAD DIST. NO.			ILLINOIS FED. AID PROJECT		
CONTRACT NO. 72A09					