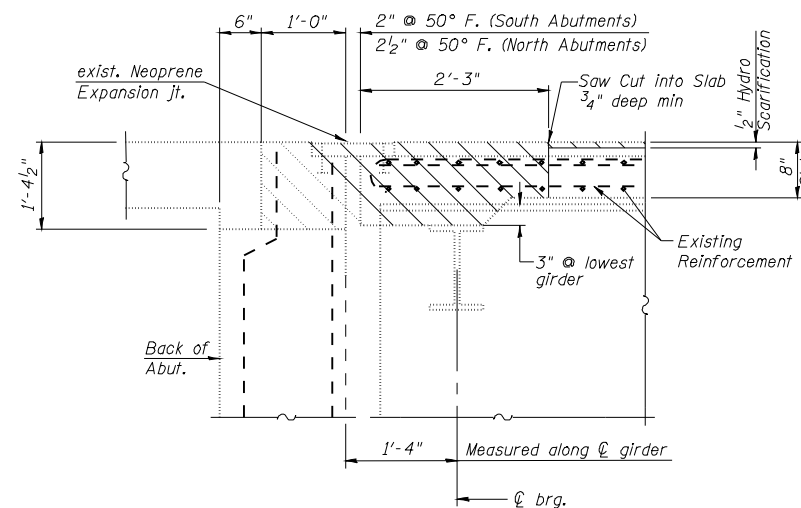
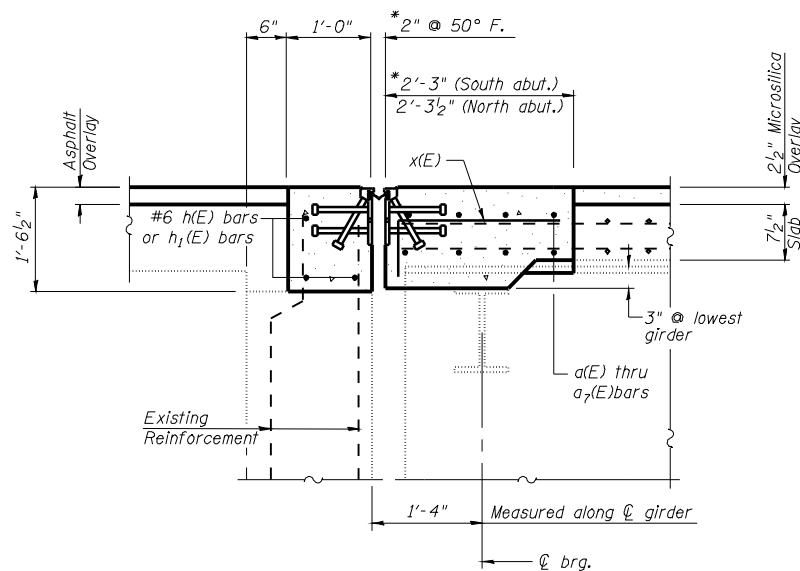


SECTION THRU APPROACH PARAPET



SECTION A-A



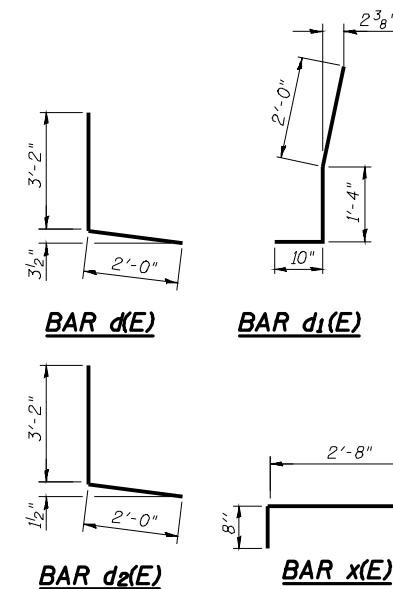
SECTION B-B

Notes:
 Hatched areas indicate concrete sections to be removed and replaced. Perimeters of concrete removal areas shall be saw cut 3/4" prior to the removal of concrete.
 Existing reinforcement bars shown are to be cleaned and incorporated into the new construction.

* Dimensions are based on a Rolled Rail Strip Seal Joint. If the Contractor elects to use the Welded Rail Strip Seal Joint, deck dimensions may require adjustments to satisfy the details on Sheet No. 13 of 17.

BILL OF MATERIAL

Bar	No.	Size	Length	Shape
a(E)	8	#5	23'-9"	—
a1(E)	8	#5	28'-9"	—
a2(E)	8	#5	31'-2"	—
a3(E)	8	#5	25'-6"	—
a4(E)	8	#5	24'-2"	—
a5(E)	8	#5	29'-6"	—
a6(E)	8	#5	26'-6"	—
a7(E)	8	#5	32'-6"	—
a8(E)	32	#5	4'-0"	—
d(E)	22	#5	5'-2"	—
d1(E)	44	#5	4'-2"	—
d2(E)	22	#5	5'-2"	—
h(E)	3	#6	23'-9"	—
h1(E)	3	#6	28'-9"	—
h2(E)	3	#6	31'-2"	—
h3(E)	3	#6	25'-6"	—
h4(E)	3	#6	24'-2"	—
h5(E)	3	#6	29'-6"	—
h6(E)	3	#6	26'-6"	—
h7(E)	3	#6	32'-6"	—
x(E)	160	#5	3'-4"	—
Reinforcement Bars, Epoxy Coated	Pound		3970	
Bar Splicers	Each		44	
Concrete Superstructure	Cu. Yds.		36.8	



DESIGNED	KTH
CHECKED	ADL
DRAWN	KTH
CHECKED	ADL

KLINGNER & ASSOCIATES, P.C.
 Engineers - Architects - Surveyors
 45 North 21st Street, Barrington, IL 60010-3233
 4300 Forest Green Road, Huntley, IL 60142-1002
 400 N. Oak Street, Suite 100, Burlington, IL 60109-7526
 1110 W. Prairie Street, Galesburg, IL 62541-1000
 Tel: (815) 221-3570 Fax: (815) 221-3883
 Tel: (815) 753-9536 Fax: (815) 752-3885
 Tel: (815) 942-4842 Fax: (815) 942-3788
 www.klingner.com
 STATE OF ILLINOIS DESIGN FIRM # 1842738

ABUTMENT DETAILS
FAI 172 OVER MILL CREEK
SN 001-0062 & 0063

SHEET NO. 12	F.A. RTE.	SECTION	COUNTY	TOTAL SHEETS	SHEET NO.
	172	1-4B-1	ADAMS	165	146
17 SHEETS	CONTRACT NO. 72A09				
FED. ROAD DIST. NO.		ILLINOIS FED. AID PROJECT			