

**STANDARD BAR SPLICER ASSEMBLY**

Bar size to be spliced	Minimum Lap Lengths			
	Table 1	Table 2	Table 3	Table 4
3, 4	1'-5"	1'-11"	2'-1"	2'-4"
5	1'-9"	2'-5"	2'-7"	2'-11"
6	2'-1"	2'-11"	3'-1"	3'-6"
7	2'-9"	3'-10"	4'-2"	4'-8"
8	3'-8"	5'-1"	5'-5"	6'-2"
9	4'-7"	6'-5"	6'-10"	7'-9"

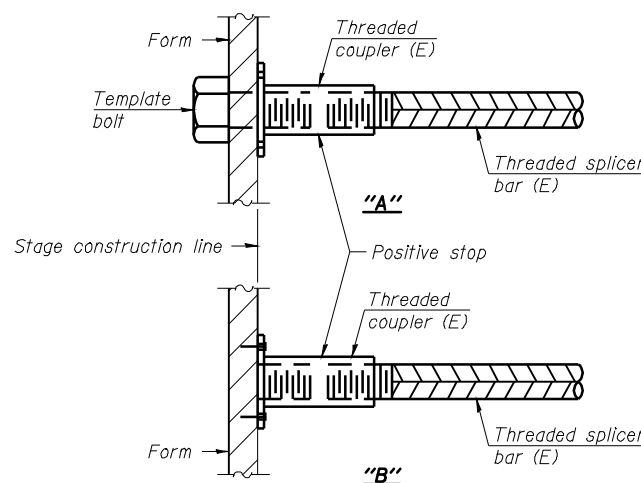
Table 1: Black bar, 0.8 Class C  
 Table 2: Black bar, Top bar lap, 0.8 Class C  
 Table 3: Epoxy bar, 0.8 Class C  
 Table 4: Epoxy bar, Top bar lap, 0.8 Class C

Threaded splicer bar length = min. lap length + 1/2" + thread length

\* Epoxy not required on Bar Splicer Assembly components used in conjunction with black bars.

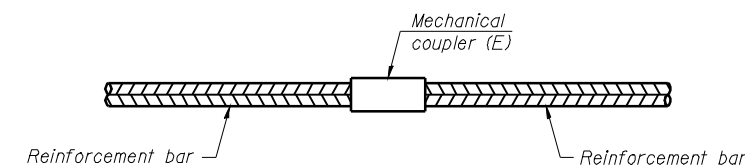
Location	Bar size	No. assemblies required	Table for minimum lap length
Deck	#5	32	Table 3
Abutment	#6	12	Table 3

STATE OF ILLINOIS  
DEPARTMENT OF TRANSPORTATION



**INSTALLATION AND SETTING METHODS**

"A" : Set bar splicer assembly by means of a template bolt.  
 "B" : Set bar splicer assembly by nailing to wood forms or cementing to steel forms.  
 (E) : Indicates epoxy coating.



**STANDARD MECHANICAL SPLICER**

**NOTES**

Splicer bars shall be deformed with threaded ends and have a minimum 60 ksi yield strength.  
 All reinforcement shall be lapped and tied to the splicer bars.  
 Bar splicer assemblies shall be epoxy coated according to the requirements for reinforcement bars. See Section 508 of the Standard Specifications.  
 See special provision for Mechanical Splicers.  
 See approved list of bar splicer assemblies and mechanical splicers for alternatives.

**BAR SPLICER ASSEMBLY AND  
MECHANICAL SPLICER DETAILS  
STRUCTURE NO. 001-0062 & 0063**

DESIGNED	KTH
CHECKED	ADL
DRAWN	KTH
CHECKED	ADL

**KLINGNER & ASSOCIATES, P.C.**  
 Engineers - Architects - Surveyors  
 150 North 24th Street, Barrington, IL 60010-3232  
 4308 Paces Green, Huntley, IL 60142-1002  
 400 N. Ash Street, Suite 100, Burlington, IL 60109-7526  
 111 West 10th Street, Galena, IL 60131-3701  
 STATE OF ILLINOIS DESIGN FIRM # 1842738

SHEET NO. 14	F.A. RTE.	SECTION	COUNTY	TOTAL SHEETS	SHEET NO.
	172	1-4B-1	ADAMS	165	148
17 SHEETS	CONTRACT NO. 72A09				
FED. ROAD DIST. NO.		ILLINOIS FED. AID PROJECT			