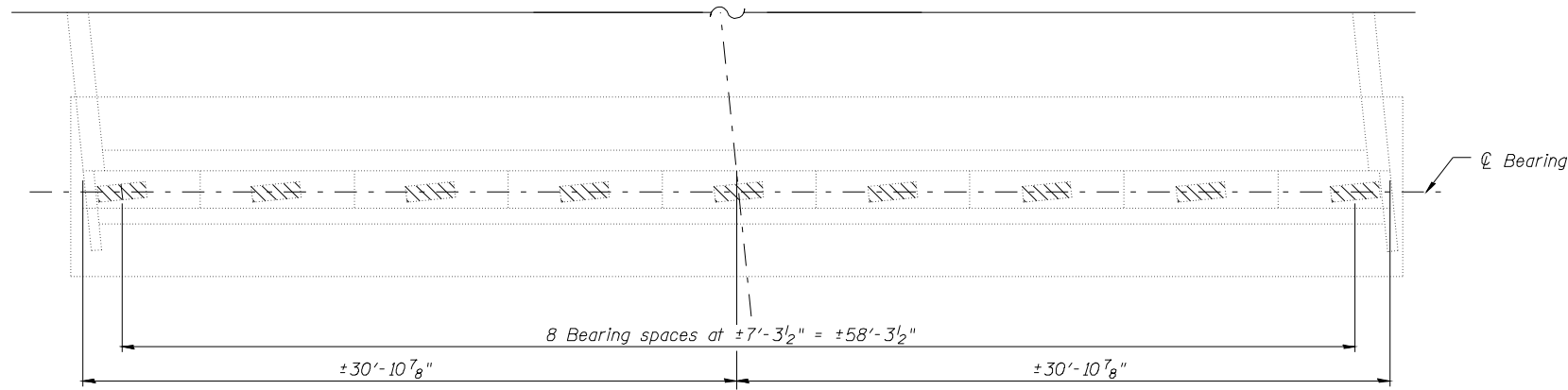
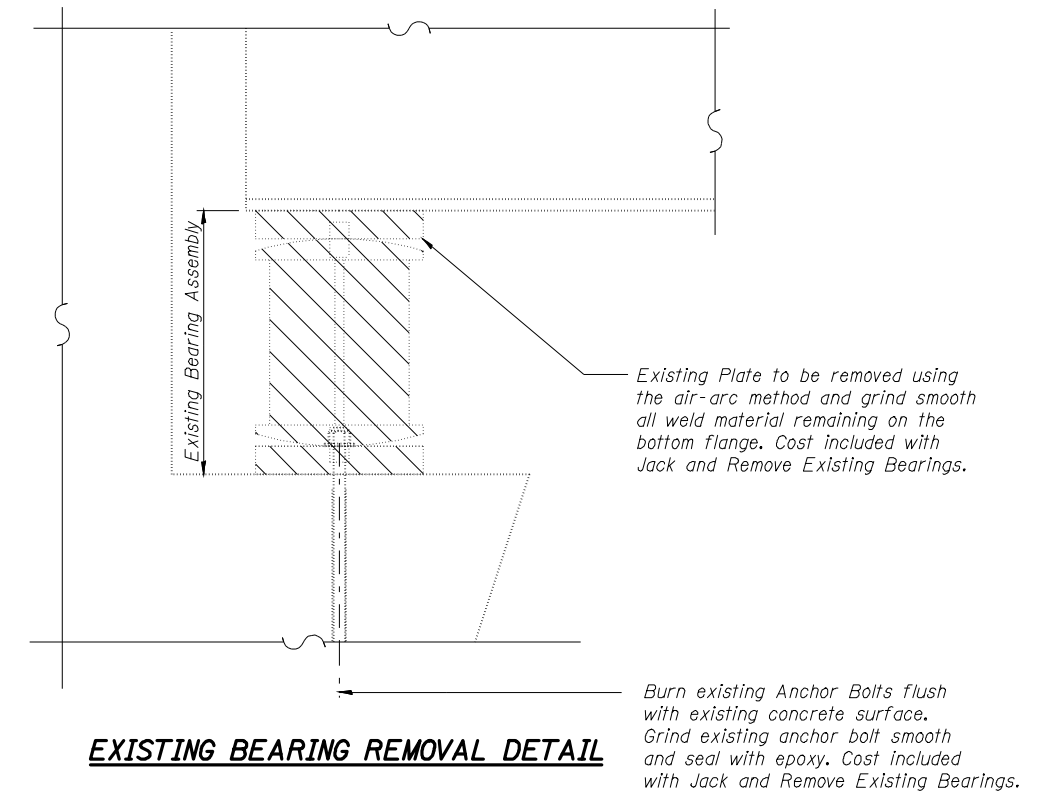


STATE OF ILLINOIS
DEPARTMENT OF TRANSPORTATION

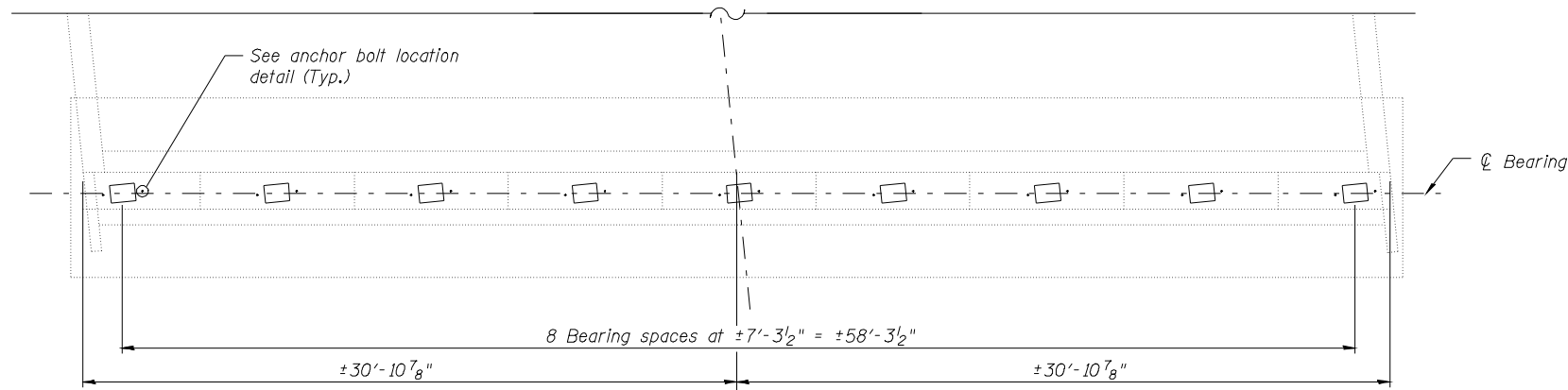
Notes:
Hatch area indicates Bearing removal. See Special Provision for Jack and Remove Existing Bearings.
Cribbing shall be designed to resist horizontal and vertical loads at bearing locations.
Existing bearings shall be removed and replaced one at a time.
Estimated Max. Dead Load and Live Load plus Impact
Beam Reaction:
Dead Load = 60.8 kips/beam (Steel & Concrete)
Live Load = 47.6 kips/beam
Impact = 10.1 kips/beam
Total = 118.5 kips/beam
Minimum Jack Capacity = 90 Tons.
See sheet 3 of 4 for Bearing details.



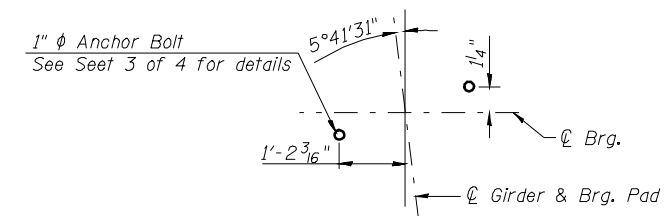
EXISTING ABUTMENT BEARING PLAN



EXISTING BEARING REMOVAL DETAIL



PROPOSED ABUTMENT BEARING PLAN



PROPOSED ANCHOR BOLT LOCATION

BEARINGS AT ABUTMENTS
STRUCTURE NO. 001-0044

	SHEET NO. 2	F.A.I. RTE.	SECTION	COUNTY	TOTAL SHEETS	SHEET NO.	
	4 SHEETS	172	1-4HB-1	ADAMS	165	159	
<small>Designed By: ESH Checked By: MTH Drawn By: ESH Date: 11/2009 File: 001-0044.dgn</small>		CONTRACT NO. 72A09					
		FED. ROAD DIST. NO.	ILLINOIS	FED. AID PROJECT			