

TRAFFIC STAGING NOTES

1. THIS TRAFFIC CONTROL PLAN SHALL BE USED IN CONJUNCTION WITH STANDARD 701316 AND AS DIRECTED BY THE ENGINEER.
2. SIGNAL AHEAD SIGNS SHALL BE ERECTED DURING STAGE CONSTRUCTION BY THE CONTRACTOR AS DIRECTED BY THE ENGINEER. COST OF SIGNS SHALL BE INCLUDED IN THE COST FOR "TRAFFIC CONTROL AND PROTECTION, STANDARD 701316 (SPECIAL)."
3. DURING STAGE CONSTRUCTION ADDITIONAL FLAGGERS ARE NECESSARY FOR REPAIRS TO BRIDGE APPROACH PAVEMENT AND BRIDGE ABUTMENT OPERATIONS.
4. ALL WORK REQUIRED TO SET UP, MAINTAIN, AND REMOVE TRAFFIC CONTROL AS DETAILED IN THESE PLANS SHALL BE INCLUDED IN THE COST FOR "TRAFFIC CONTROL AND PROTECTION, STANDARD 701316 (SPECIAL)."
5. THE CONTRACTOR MUST PLACE MAXIMUM WIDTH SIGNS PRIOR TO IMPLEMENTING ANY STAGE'S TRAFFIC CONTROL. THESE SIGNS SHALL BE PLACED AS SHOWN ON STANDARD 701316 AND INCLUDED IN THE COST OF "TRAFFIC CONTROL AND PROTECTION, STANDARD 701316 (SPECIAL)."
6. TEMPORARY SIGNING, BARRICADES OR DRUMS, AND TEMPORARY WALL BARRIER REFLECTORS SHALL BE PLACED IN ACCORDANCE WITH STANDARD 701316, OR AS DIRECTED BY THE ENGINEER.
7. THE CONTRACTOR SHALL NOTIFY THE DISTRICT 6 TRAFFIC SECTION OF THE BUREAU OF OPERATIONS (PH: 217-785-5312) AT LEAST THREE WEEKS PRIOR TO IMPLEMENTING STAGE TRAFFIC CONTROL AND WHEN EVER A SWITCH IN STAGING IS MADE.
8. THE CONTRACTOR MUST NOTIFY THE DISTRICT 6 TRAFFIC SECTION OF THE BUREAU OF OPERATIONS AT LEAST THREE (3) DAYS PRIOR TO ACTIVATING THE TEMPORARY TRAFFIC SIGNALS. PLEASE REFER TO THE DISTRICT 6 SPECIAL PROVISION FOR TEMPORARY BRIDGE TRAFFIC SIGNALS FOR CONTACT INFORMATION.
9. ACCESS MUST BE PROVIDED TO ALL F.E. AS REQUIRED BY THE PROPERTY OWNER. NO SIGNALS WILL BE REQUIRED FOR THEM.
10. EXISTING PAVEMENT MARKING THAT CONFLICTS WITH THE REVISED STAGE TRAFFIC PATTERNS DURING ALL PHASES OF STAGE CONSTRUCTION SHALL BE REMOVED AS SPECIFIED IN SECTION 783 OF THE STANDARD SPECIFICATIONS AND PAID FOR AS "PAVEMENT MARKING REMOVAL."
11. THE COST TO INSTALL AND REMOVE TEMPORARY PAVEMENT MARKINGS DETAILED ON THESE SHEETS SHALL BE INCLUDED IN THE COST OF "TRAFFIC CONTROL AND PROTECTION, STANDARD 701316 (SPECIAL)."

NOTE:
TEMPORARY PORTABLE BRIDGE TRAFFIC SIGNALS WILL NOT BE ALLOWED AT THIS LOCATION

STAGE I CONSTRUCTION PLAN

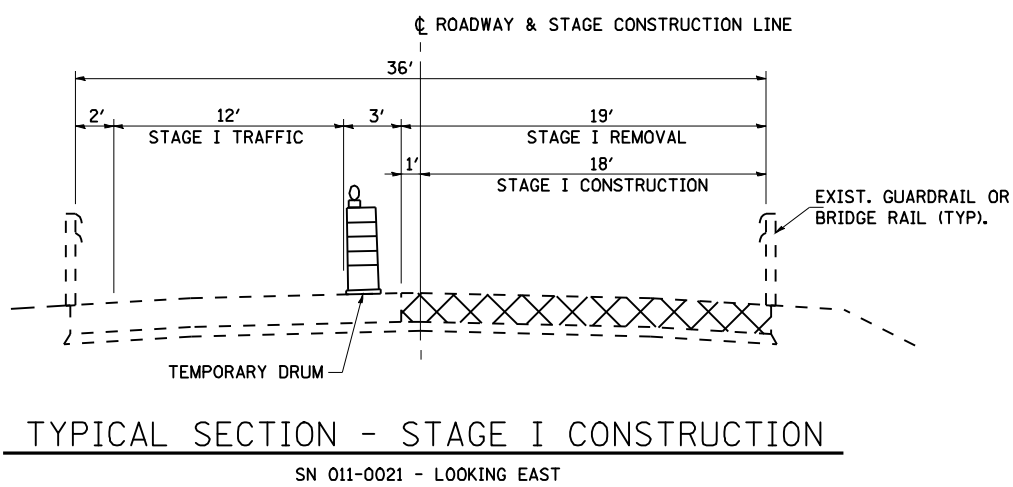
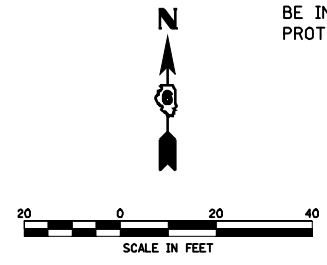
TEMPORARY PHASE DESIGNATION DIAGRAM

PRELIMINARY STAGE - SUGGESTED CONSTRUCTION SEQUENCE

1. SET UP STAGE I TRAFFIC CONTROL UTILIZING THESE PLANS IN CONJUNCTION WITH HIGHWAY STANDARD 701316. BE SURE TO USE THE LATEST REVISION AS INCLUDED WITH THESE PLANS.
2. PLACE MAXIMUM WIDTH SIGNING AT THE LOCATIONS AS SHOWN ON STANDARD 701316.
3. PLACE TEMPORARY BARRICADES OR DRUMS AND PAVEMENT MARKINGS IN ACCORDANCE WITH THESE PLANS.
4. INSTALL TEMPORARY SIGNALIZATION AND DETECTION SYSTEMS AT THE LOCATION CALLED OUT IN THESE PLANS FOR SN 011-0021. THE SIDE ROAD LT. STA. 1254+26+/- MUST REMAIN OPEN AT ALL TIMES DURING REPAIRS TO THE BRIDGE AND APPROACH PAVEMENT. A SEPARATE SIGNAL HEAD WILL BE USED TO CONTROL THIS INTERMEDIATE SIDE ROAD.
5. ALL SIGNALS ARE TO BE ACTUATED.
6. PROVIDE TWO MESSAGE SIGNS FOR DURATION OF OF CONTRACT AND ADJUST AS DIRECTED BY THE ENGINEER. .

STAGE I - SUGGESTED CONSTRUCTION SEQUENCE

1. PERFORM STAGE I BRIDGE APPROACH PAVEMENT AND ABUMENT REPAIRS TO SN 011-0019.
2. INSTALL PERMANENT GUARDRAIL AS SHOWN IN THESE PLAN FOR STAGE II TRAFFIC.



TYPICAL SECTION - STAGE I CONSTRUCTION
SN 011-0021 - LOOKING EAST

LEGEND

	SIGN
	TYPE III BARRICADE WITH FLASHING LIGHTS
	DRUM WITH STEADY BURNING LIGHT
	TYPE C BIDIRECTIONAL REFLECTOR
	TEMPORARY TRAFFIC SIGNAL
	DOUBLE VERTICAL PANEL
	DETECTOR LOOPS
	TEMPORARY PAVEMENT MARKING, LINE 5" WHITE
	TEMPORARY PAVEMENT MARKING, LINE 24" WHITE
	WORK AREA

FILE NAME =	USER NAME = laughlinr1	DESIGNED -	REVISED -
es:\pwwork\pwwid001\LAUGHLINRL\dms25619\0672813-ah-t-staging-an0021.dgn		DRAWN -	REVISED -
		CHECKED -	REVISED -
		DATE -	REVISED -

STATE OF ILLINOIS
DEPARTMENT OF TRANSPORTATION

MAINTENANCE OF TRAFFIC & STAGING PLANS - SN 011-0021			
F.A.P. RTE.	SECTION	COUNTY	TOTAL SHEETS
753	141RS-6&142RS-6		62
SCALE:			SHEET NO. OF SHEETS STA. TO STA.

CONTRACT NO.	72B13
ILLINOIS FED. AID PROJECT	