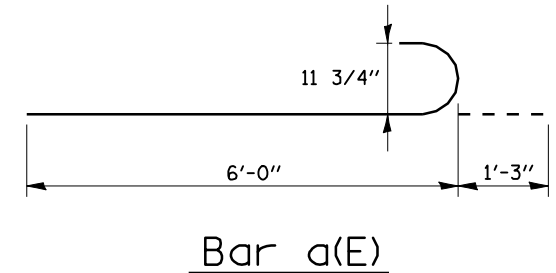


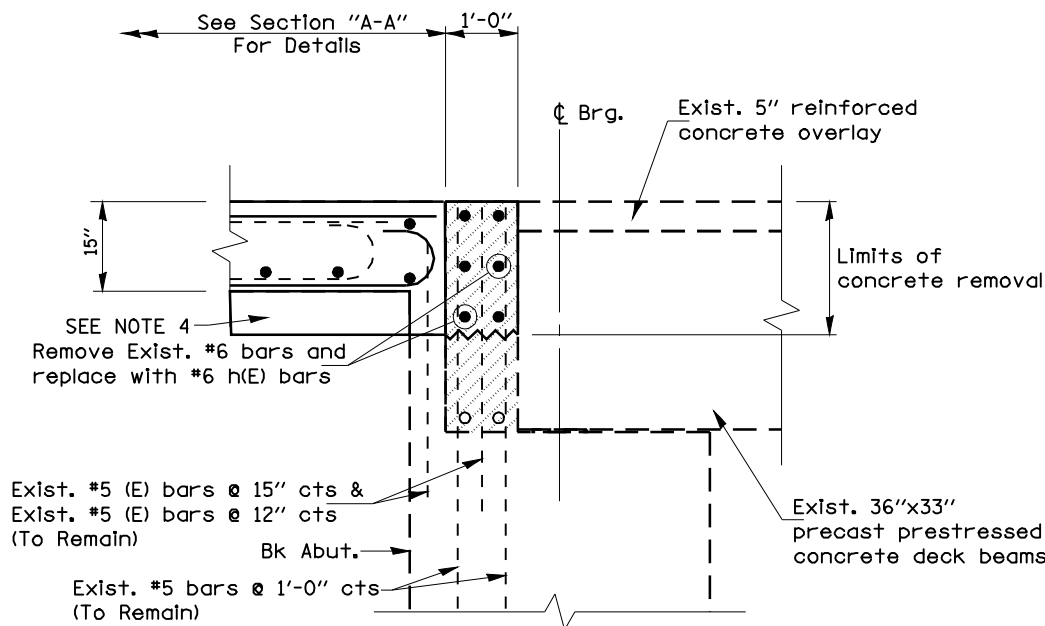
SECTION "A-A"

SN 011-0019 EAST BRIDGE APPROACH PAVEMENT
 SN 011-0020 WEST BRIDGE APPROACH PAVEMENT
 SN 011-0021 EAST BRIDGE APPROACH PAVEMENT



NOTES:

1. ALL EXISTING LONGITUDINAL AND VERTICAL STEEL EXTENDING INTO THE NEW CONSTRUCTION TO BE CLEANED, STRAIGHTENED, AND INCORPORATED INTO NEW CONSTRUCTION. THIS WORK WILL NOT BE PAID FOR SEPARATELY BUT BE INCLUDED IN THE COST FOR CONCRETE REMOVAL.
2. ALL TRANSVERSE STEEL TO BE REMOVED AND REPLACED IN KIND.
3. ANY REINFORCEMENT BARS THAT ARE DAMAGED DURING CONCRETE REMOVAL OPERATIONS SHALL BE REPAIRED OR REPLACED USING AN APPROVED BAR SPLICER OR ANCHORAGE SYSTEM. THIS COST IS TO BE INCLUDED IN THE COST FOR CONCRETE REMOVAL.
4. SUB-BASE GRANULAR MATERIAL, TYPE A SHALL BE PROVIDED TO PROVIDE A BASE FOR CONSTRUCTION OF THE BRIDGE APPROACH PAVEMENT. THE COST FOR THIS AGGREGATE SHALL BE INCLUDED IN THE COST OF CONCRETE SUPERSTRUCTURE.



DETAIL "B"

SN 011-0022 EAST & WEST BRIDGE APPROACH PAVEMENT

FILE NAME =	USER NAME = laughlinr1	DESIGNED -	REVISED -	STATE OF ILLINOIS DEPARTMENT OF TRANSPORTATION	BRIDGE APPROACH PAVEMENT DETAILS			F.A.P. RTE.	SECTION	COUNTY	TOTAL SHEETS	SHEET NO.
e:\pwork\PWIDOT\LAUGHLINRL\dms25619\0672813-ah-bridgeapproachpavementdetails.dgn	DRAWN -	REVISED -	753					141RS-6&142RS-6	*	62	52	
PLOT SCALE = 40.0000 ' / IN.	CHECKED -	REVISED -	CONTRACT NO. 72B13									
PLOT DATE = Feb-05-2010 11:47:28AM	DATE -	REVISED -	ILLINOIS FED. AID PROJECT									
				SCALE:	SHEET NO.	OF SHEETS	STA.	TO STA.	* SANGAMON, CHRISTIAN			