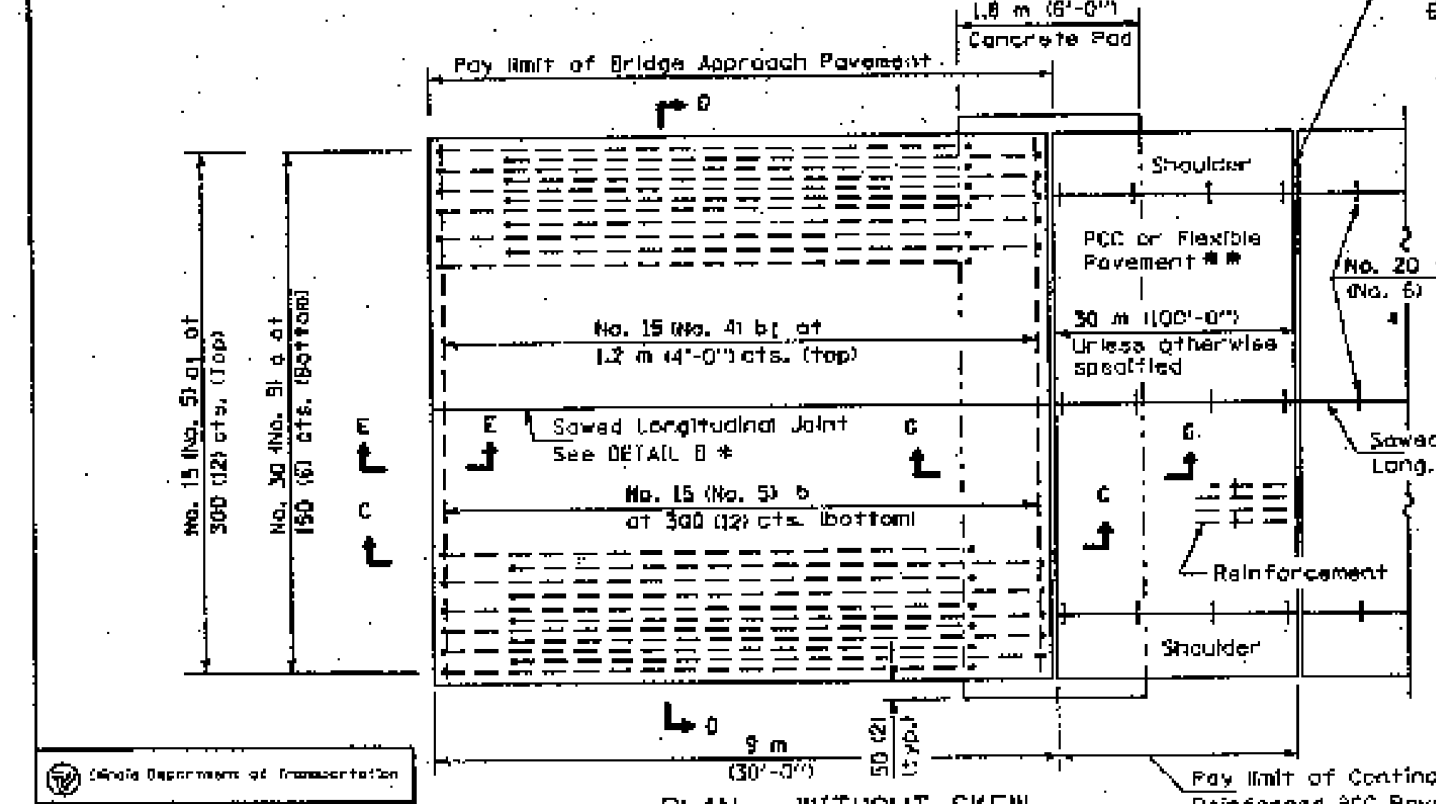


PLAN - WITH SKEW

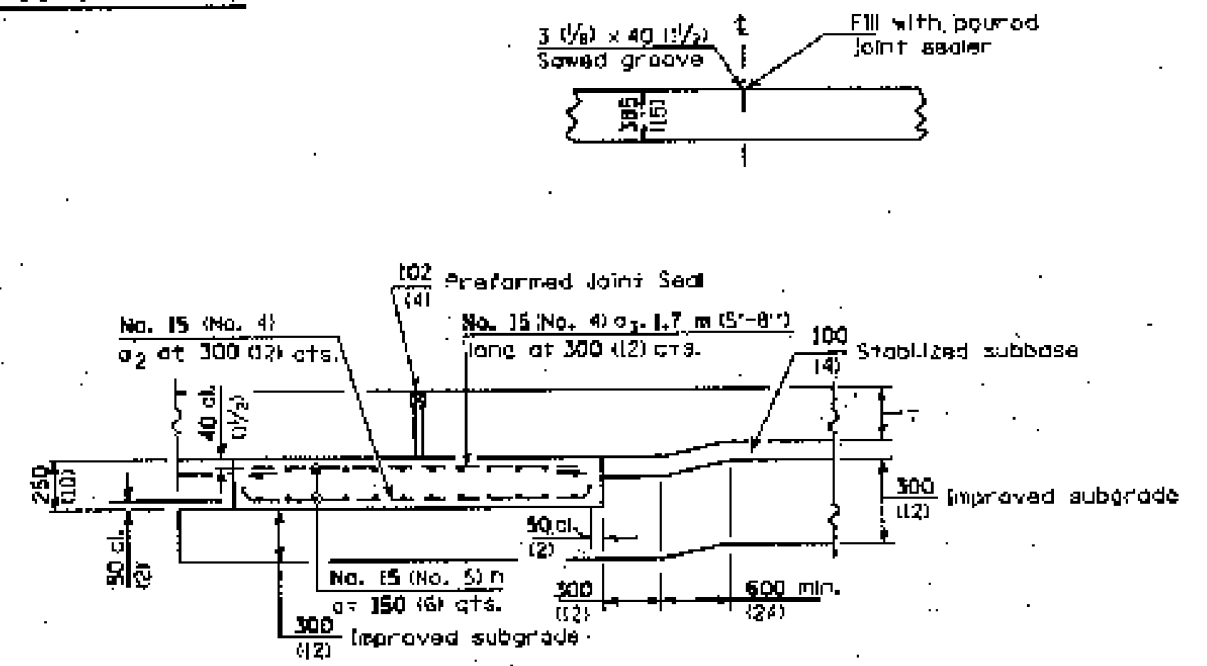


PLAN - WITHOUT SKEW

\* Saw @ on lane edge if poured two or more lane widths at a time.  
 \*\* Omit Reinforcement, tie bars and sawed Long. Jt. for Flexible Pavement.

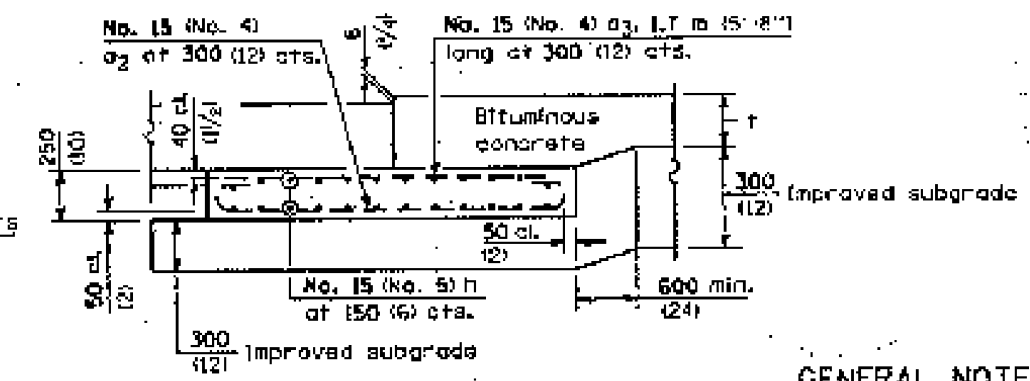
NEW CONSTRUCTION

DETAIL B\*



SECTION G-G - RIGID PAVEMENT

PCC Pavement only (Showing reinforcement)  
 Wide Flange Beam Terminal Joint (See DETAIL AT BEAM - Standard 421101 or 421061 or 15 (3) Exp. Joint as detailed on Standard 420001.



SECTION G-G - FLEXIBLE PAVEMENT

(Showing reinforcement)

GENERAL NOTES

THICKNESS - "T" (thickness of Pavement).  
 See Standard 421001 for reinforcement details not shown.  
 See Standard 420001 for details of joints not shown.  
 All dimensions are in millimeters (inches) unless otherwise shown.

DATE	REVISIONS
1-1-98	Rev. ref. to Std 2443 to 609006. Added "top"
	& "bottom" to pg. 1
1-1-97	Ream. Standard 2442-4.

BRIDGE APPROACH PAVEMENT

(Sheet 1 of 3)

STANDARD 420401-01

\* FOR INFORMATION ONLY

Illinois Department of Transportation

DESIGNED: [Signature] January 1, 1998

DRAWN: [Signature] January 1, 1998

CHECKED: [Signature] January 1, 1998

APPROVED: [Signature] January 1, 1998