

F.A.P. RTE.	SECTION	COUNTY	TOTAL SHEETS	SHEET NO.
752	(U-2BR1)B-1	FAYETTE	71	1
		ILLINOIS	CONTRACT NO. 74235	

**INDEX OF SHEETS**

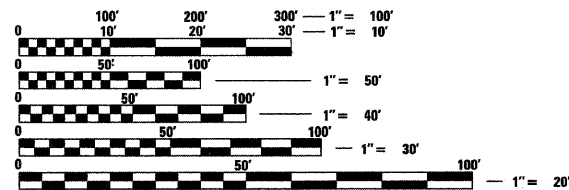
1. COVER SHEET
2. GENERAL NOTES & HIGHWAY STANDARDS
3. SUMMARY OF QUANTITIES
4. TYPICAL SECTIONS
5. SCHEDULE OF QUANTITIES
6. ALIGNMENT, TIES, & BENCHMARKS
- 7-9. PLAN & PROFILE SHEETS
- 10-18. SUGGESTED STAGES OF CONSTRUCTION & TRAFFIC CONTROL
- 19-20. EROSION CONTROL & PAVEMENT MARKINGS
- 21-22. DETAILS
- 23-60. STRUCTURE PLANS SN 026-0105
- 61-71. CROSS SECTIONS

**STATE OF ILLINOIS**  
**DEPARTMENT OF TRANSPORTATION**  
**DIVISION OF HIGHWAYS**  
**PROPOSED**  
**HIGHWAY PLANS**

**FAP ROUTE 752**  
**SECTION (U-2BR1)B-1**  
**PROJECT: ACBRF-0752(004)**  
**FAYETTE COUNTY**  
**BRIDGE REPLACEMENT**  
**IL ROUTE 185 (US ROUTE 40) OVER CAMP CREEK**

C-97-037-07  
R1E

PROJECT INCLUDES A FOUR SPAN  
STEEL WIDE FLANGE COMPOSITE  
BEAM BRIDGE. 394'-0" BACK TO  
BACK OF ABUTMENTS. 39'-2" OUT  
TO OUT DECK

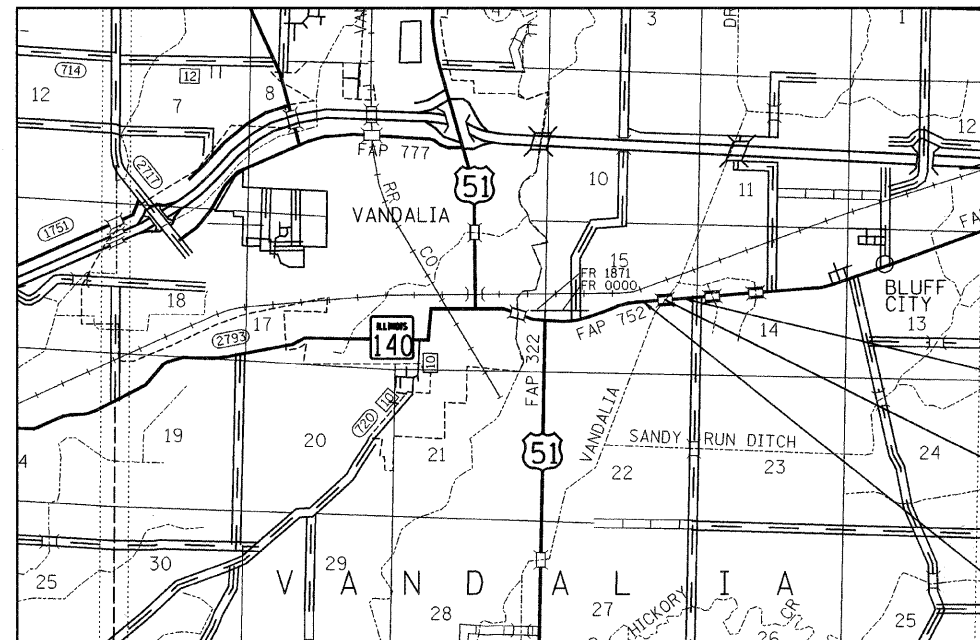


FULL SIZE PLANS HAVE BEEN PREPARED USING STANDARD  
ENGINEERING SCALES. REDUCED SIZED PLANS WILL NOT  
CONFORM TO STANDARD SCALES. IN MAKING MEASUREMENTS  
ON REDUCED PLANS, THE ABOVE SCALES MAY BE USED.

J.U.L.I.E.  
JOINT UTILITY LOCATION INFORMATION FOR EXCAVATION  
1-800-892-0123  
OR 811

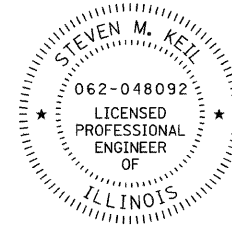
DISTRICT 7 NO. (217) 342-3951  
PROJECT ENGINEER: MARK DAUGHERTY  
UNIT CHIEF:  
TOWNSHIP:

CONTRACT NO. 74235

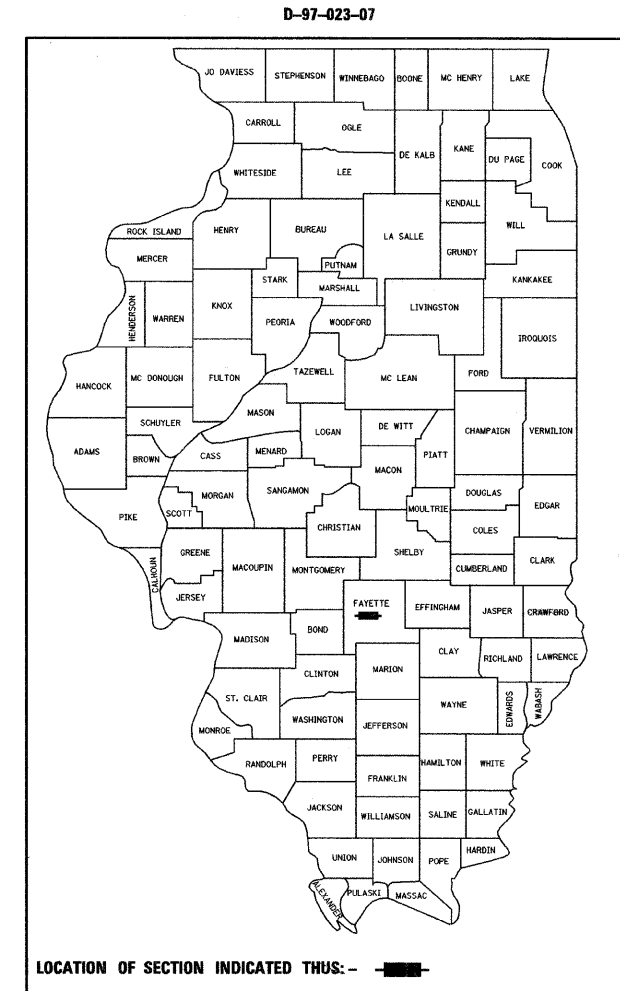


LOCATION MAP  
SCALE 1" = 6000'

GROSS LENGTH = 1069 FT. = 0.202 MILE  
NET LENGTH = 1069 FT. = 0.202 MILE



*Steven M. Keil*  
STEVEN M. KEIL, P.E.  
License Expires 11/30/2009  
09-25-09 Date



FUNCTIONAL CLASS: RURAL MINOR ARTERIAL  
DESIGN SPEED: 60 MPH  
POSTED SPEED: 55 MPH  
ADT: 3,900 (2009)  
PV: 92%  
SU: 5%  
MU: 3%

STATE OF ILLINOIS  
DEPARTMENT OF TRANSPORTATION  
DIVISION OF HIGHWAYS

SUBMITTED *October 9, 2009*

*Roger L. Dickel*  
DEPUTY DIRECTOR OF HIGHWAYS, REGION ENGINEER

*December 4, 2009*  
*Charles J. Ingersoll*  
ENGINEER OF DESIGN AND ENVIRONMENT

*December 4, 2009*  
*Christine M. Reed*  
DIRECTOR OF HIGHWAYS, CHIEF ENGINEER

**PRINTED BY THE AUTHORITY  
OF THE STATE OF ILLINOIS**