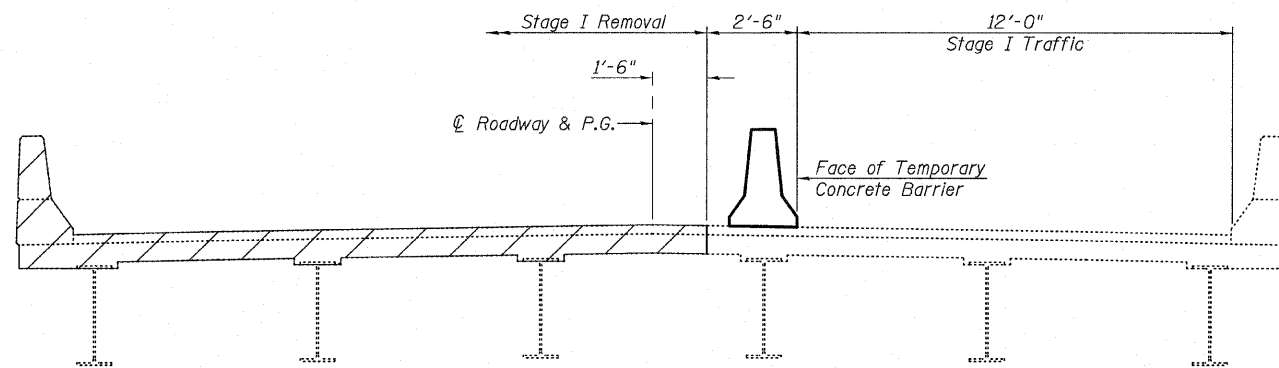
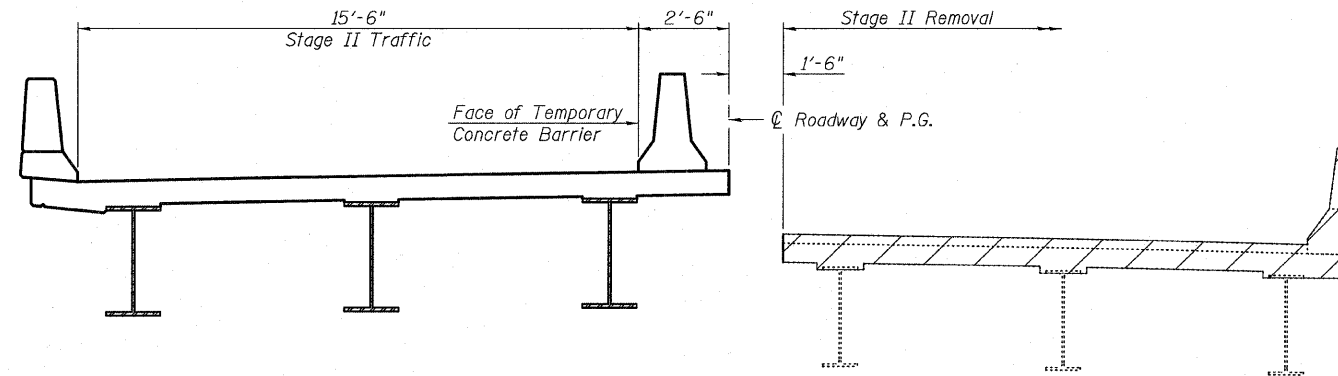


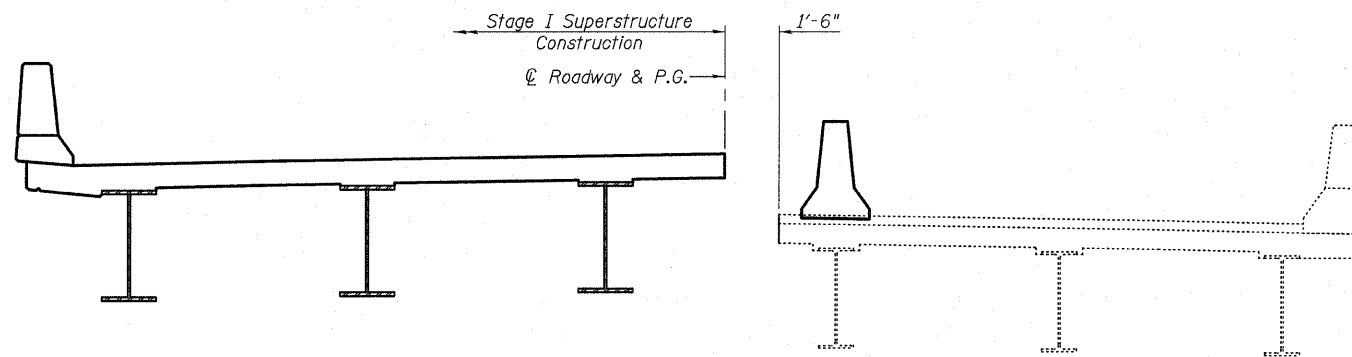
STATE OF ILLINOIS  
DEPARTMENT OF TRANSPORTATION



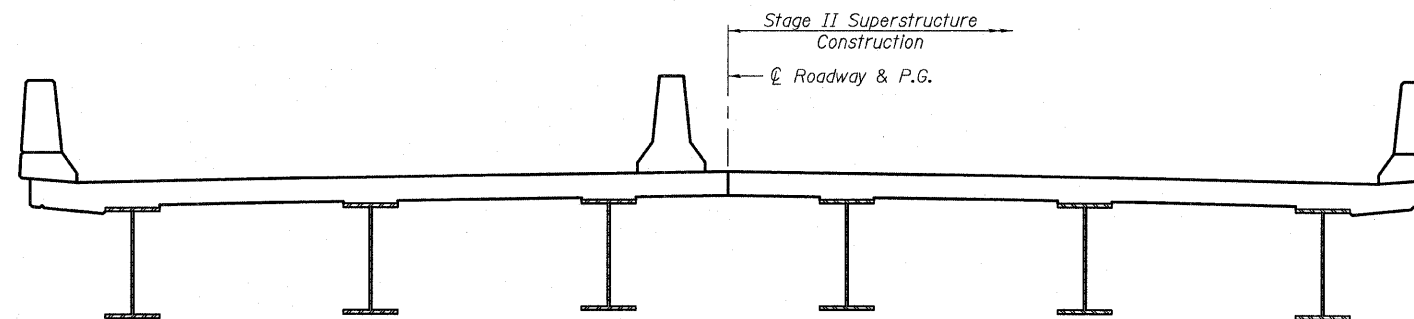
STAGE I REMOVAL



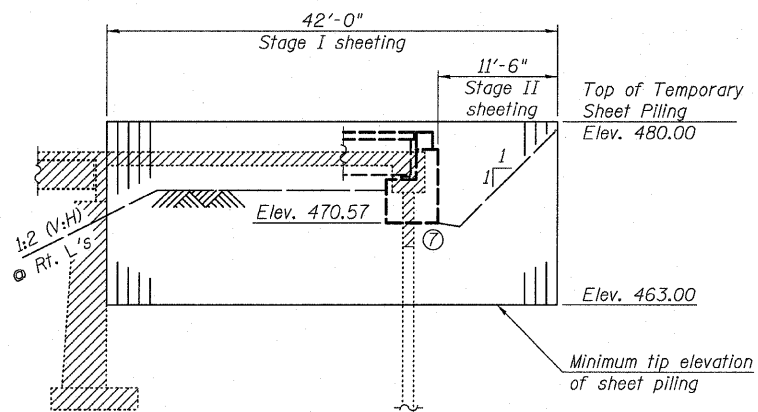
STAGE II REMOVAL



STAGE I CONSTRUCTION



STAGE II CONSTRUCTION



EAST ABUTMENT


Minimum Section  
Modulus = 10.0 in<sup>3</sup>/ft

TEMPORARY SHEET PILING DETAIL

Notes:

- ① All views of existing Span 7 looking east.
- ② For quantity of Temporary Concrete Barrier and related traffic control, see roadway plans.
- ③ For details of Temporary Concrete Barrier, see sheet 5 of 38.
- ④ Hatched areas indicate limits of Removal of Existing Structures.
- ⑤ The substructure stage removal and construction lines shall be similar to the superstructure stage removal and construction lines except as noted.
- ⑥ Existing Span 7 supports (Pier 10 and East Abutment in 1983 plans) shall be removed during Stage II Removal only. Partial removal of Span 7 supports will be allowed during Stage I Removal as required to facilitate Stage I Superstructure Construction with the approval of the Engineer.
- ⑦ Concrete piles supporting the existing east approach bent shall be removed to the depth required for construction of the proposed East Abutment pile cap and to facilitate the driving of the proposed battered steel piles. Cost included in Removal of Existing Structures.
- ⑧ The Contractor shall monitor the existing structure during Stage I Removal and pile driving to assure that no movement or damage is occurring. If movement or damage is observed, the Contractor shall immediately stop work and notify the Engineer. Cost included in Removal of Existing Structures.
- ⑨ If the Contractor chooses to alter the temporary cantilevered sheet piling design requirements shown on the plans, a design submittal including plan details and calculations will be required for review and acceptance by the Engineer.
- ⑩ The Contractor shall connect the first sheet to the existing abutment wall to ensure stability of sheets driven to the top of the existing footing. This connection shall be reviewed and accepted by the Engineer and included in the cost for Temporary Sheet Piling.

STAGE CONSTRUCTION DETAILS  
STRUCTURE NO. 026-0105

SHEET NO. 4  38 SHEETS	F.A.P. RTE.	SECTION	COUNTY	TOTAL SHEETS	SHEET NO.
	752	(U-2BR)B-1	FAYETTE	71	26
CONTRACT NO. 74235					
FED. ROAD DIST. NO. 7 ILLINOIS FED. AID PROJECT					
 <b>OATES ASSOCIATES</b> Consulting Engineers	Eastport Business Center 1 100 Lanter Court, Suite 1 Collinsville, Illinois 62234 618-345-2200 Design Firm License No. 184.001115				DESIGNED MAG
					CHECKED NEL
					DRAWN MAG
					CHECKED NEL