

STATE OF ILLINOIS
DEPARTMENT OF TRANSPORTATION
DIVISION OF HIGHWAYS

**PROPOSED
HIGHWAY PLANS**

F.A.P. ROUTE 116 (IL. RTE. 130)
SECTION (F-X)RS-1, (113,120)RS-1
PROJECT --
RESURFACING (3P)
CUMBERLAND COUNTY

C-97-124-09

F.A.P. RTE.	SECTION	COUNTY	TOTAL SHEETS	SHEET NO.
116	(F-X)RS-1, (113,120)RS-1	CUMBERLAND	25	1
		ILLINOIS	CONTRACT NO. 74410	

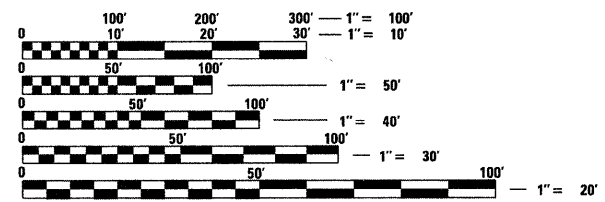
FOR INDEX OF SHEETS, SEE SHEET NO. 2

STATION EQUATION:
STA. 734 + 79.80 (BK) =
STA. 735 + 05.20 (AH)

PAVING OMISSIONS:
STA. 497 + 73.00 TO STA. 499 + 48.00
STA. 706 + 63.00 TO STA. 709 + 64.00

F.A.P. ROUTE 116 (IL. RTE. 130)
SECTION (F-X)RS-1, (113,120)RS-1
CUMBERLAND COUNTY
BEGINS STATION 459 + 50.00

2008 ADT = 2600

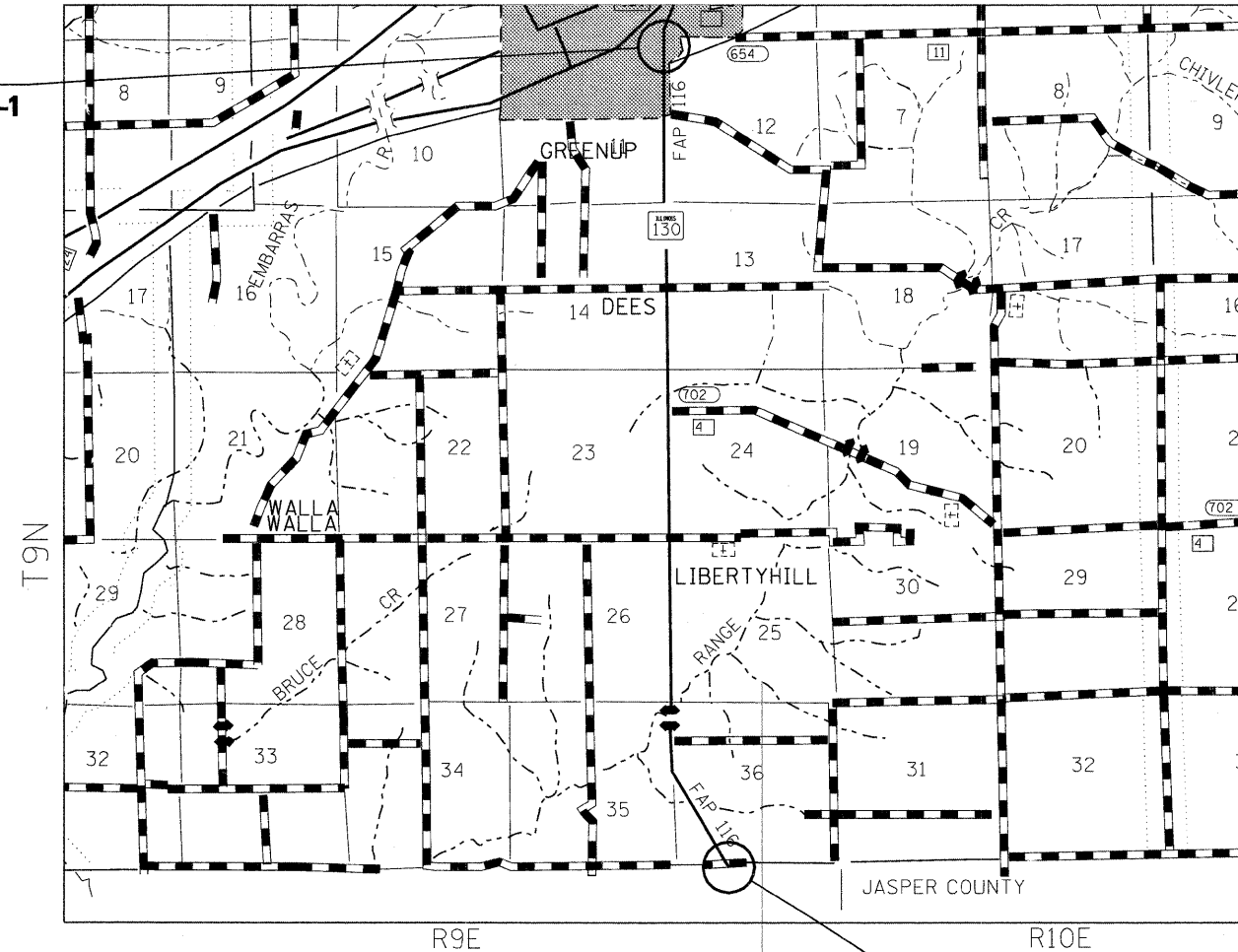


FULL SIZE PLANS HAVE BEEN PREPARED USING STANDARD ENGINEERING SCALES. REDUCED SIZED PLANS WILL NOT CONFORM TO STANDARD SCALES. IN MAKING MEASUREMENTS ON REDUCED PLANS, THE ABOVE SCALES MAY BE USED.

J.U.L.I.E.
JOINT UTILITY LOCATION INFORMATION FOR EXCAVATION
1-800-892-0123
OR 811

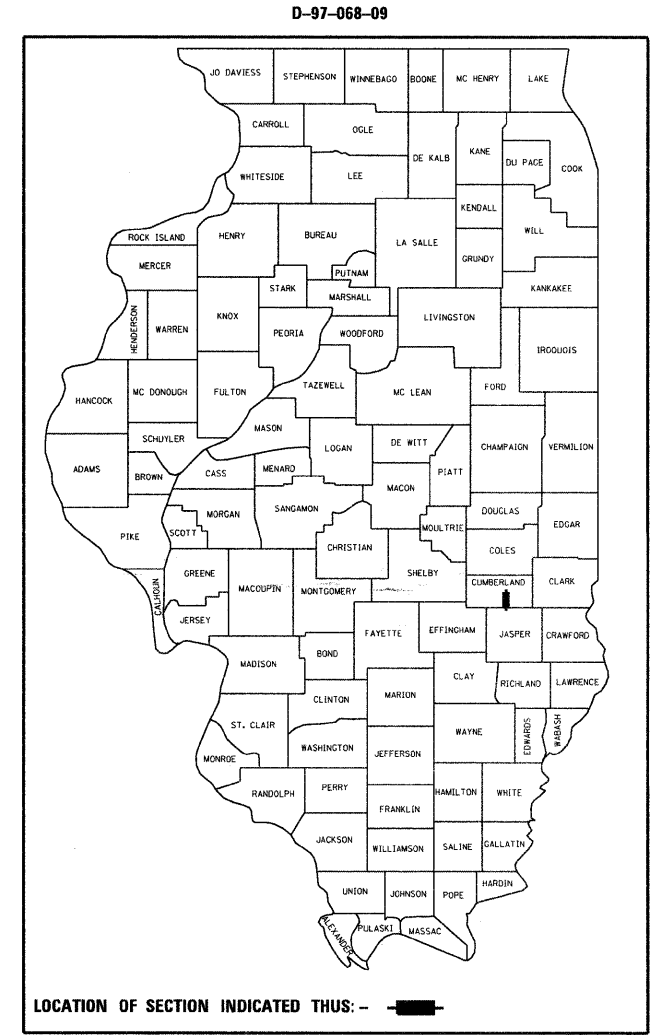
PROJECT ENGINEER: TOM RONAN
PROJECT MANAGER: JENNIFER WENTHE

CONTRACT NO. 74410



GROSS LENGTH = 30,224.6 FT. = 5.72 MILE
NET LENGTH = 29,748.6 FT. = 5.63 MILE

F.A.P. ROUTE 116 (IL. RTE. 130)
SECTION (F-X)RS-1, (113,120)RS-1
CUMBERLAND COUNTY
ENDS STATION 762 + 00.00



STATE OF ILLINOIS
DEPARTMENT OF TRANSPORTATION
DIVISION OF HIGHWAYS

SUBMITTED January 26, 2010

Roger L. Swislock
DEPUTY DIRECTOR OF HIGHWAYS, REGION ENGINEER

March 19, 2010
Scott E. Stolt, P.E.
Acting ENGINEER OF DESIGN AND ENVIRONMENT

March 19, 2010
Christie M. Reed
DIRECTOR OF HIGHWAYS, CHIEF ENGINEER

**PRINTED BY THE AUTHORITY
OF THE STATE OF ILLINOIS**