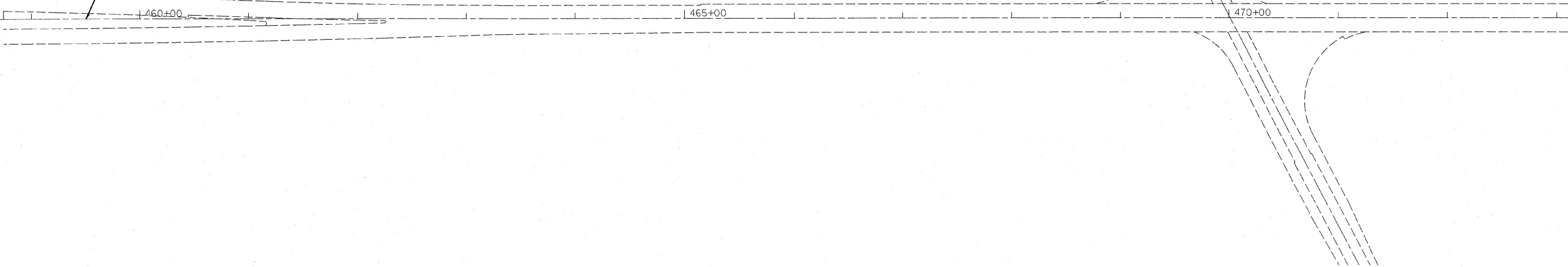


F.A.P. ROUTE 116 (IL. RTE. 130)
SECTION (F-X)RS-1, (113,120)RS-1
CUMBERLAND COUNTY
BEGINS STA. 459+50

EXIST. CURVE 1
PI STA. = 474+56.70
 $\Delta = 2^\circ 17' 00''$ (LT)
D = $0^\circ 21' 25''$
R = 16,057.04'
T = 319.99'
L = 639.90'
E = 3.19'
e = -----
T.R. = -----
S.E. RUN = -----
P.C. STA. = 471+36.71
P.T. STA. = 477+76.61

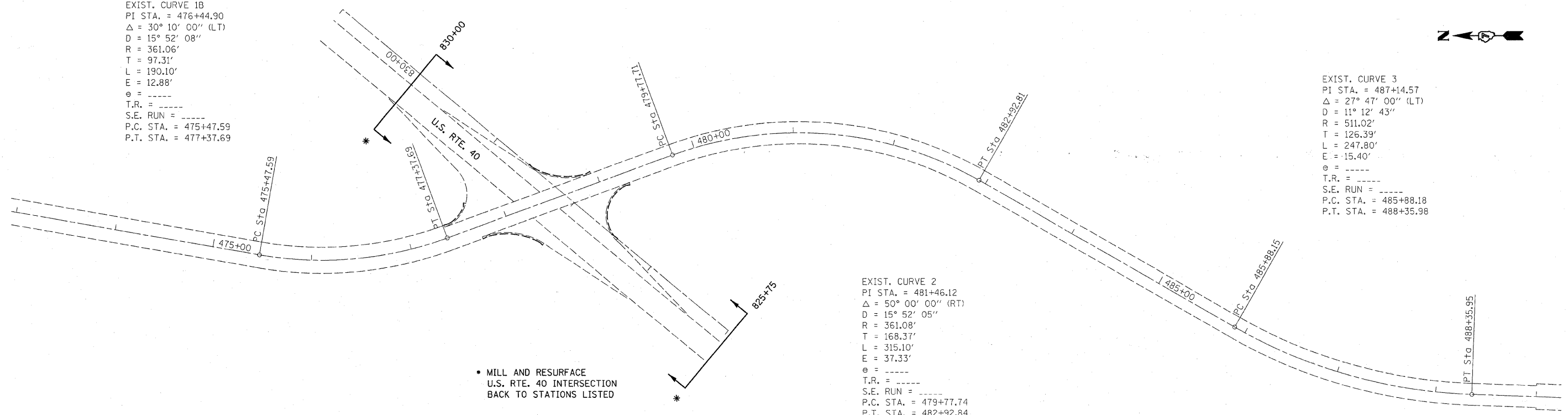


EXIST. CURVE 1B
PI STA. = 476+44.90
 $\Delta = 30^\circ 10' 00''$ (LT)
D = $15^\circ 52' 08''$
R = 361.06'
T = 97.31'
L = 190.10'
E = 12.88'
e = -----
T.R. = -----
S.E. RUN = -----
P.C. STA. = 475+47.59
P.T. STA. = 477+37.69

EXIST. CURVE 3
PI STA. = 487+14.57
 $\Delta = 27^\circ 47' 00''$ (LT)
D = $11^\circ 12' 43''$
R = 511.02'
T = 126.39'
L = 247.80'
E = 15.40'
e = -----
T.R. = -----
S.E. RUN = -----
P.C. STA. = 485+88.18
P.T. STA. = 488+35.98

EXIST. CURVE 2
PI STA. = 481+46.12
 $\Delta = 50^\circ 00' 00''$ (RT)
D = $15^\circ 52' 05''$
R = 361.08'
T = 168.37'
L = 315.10'
E = 37.33'
e = -----
T.R. = -----
S.E. RUN = -----
P.C. STA. = 479+77.74
P.T. STA. = 482+92.84

* MILL AND RESURFACE
U.S. RTE. 40 INTERSECTION
BACK TO STATIONS LISTED



FILE NAME =	USER NAME = swartzw	DESIGNED -	REVISED -	STATE OF ILLINOIS DEPARTMENT OF TRANSPORTATION	PLAN SHEETS		F.A.P. RTE. 116	SECTION *	COUNTY CUMBERLAND	TOTAL SHEETS 25	SHEET NO. 15	
c:\pwork\pwork\swartzw\08147989\077	410-shr-plan.dgn	DRAWN -	REVISED -		SCALE: 50	SHEET NO. 1 OF 11 SHEETS	STA. 459+50 TO STA. 489+00	CONTRACT NO. 74410		ILLINOIS FED. AID PROJECT		
	PLOT SCALE = 50.0000' / IN.	CHECKED -	REVISED -									
	PLOT DATE = 1/21/2010	DATE -	REVISED -									

* (F-X)RS-1, (113,120)RS-1