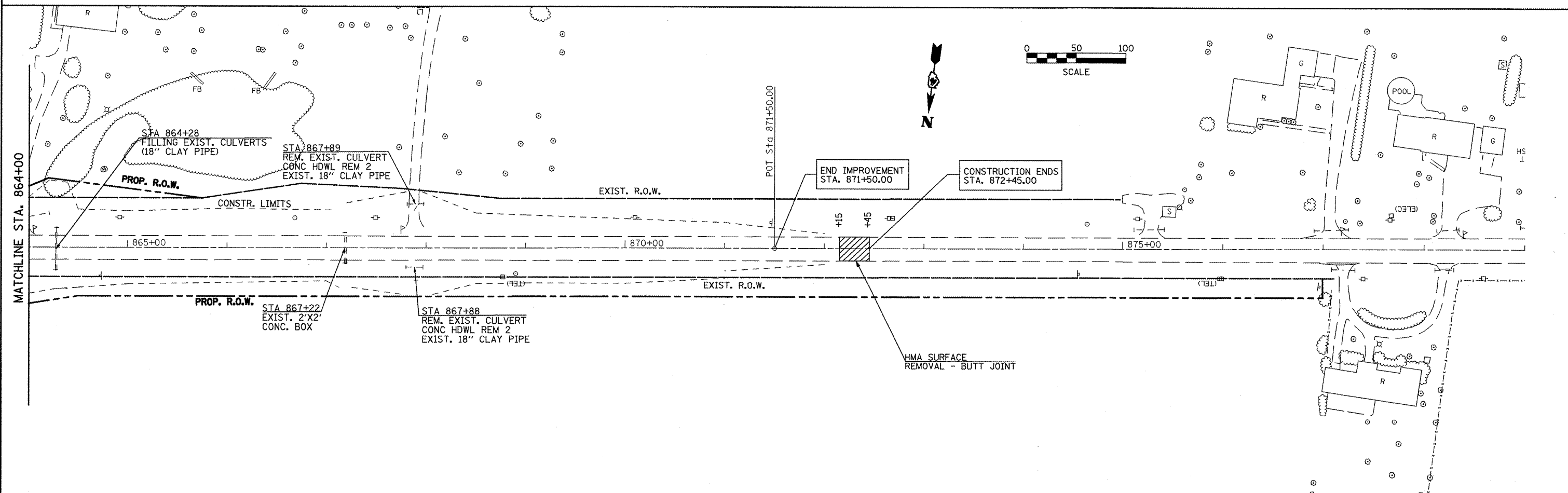
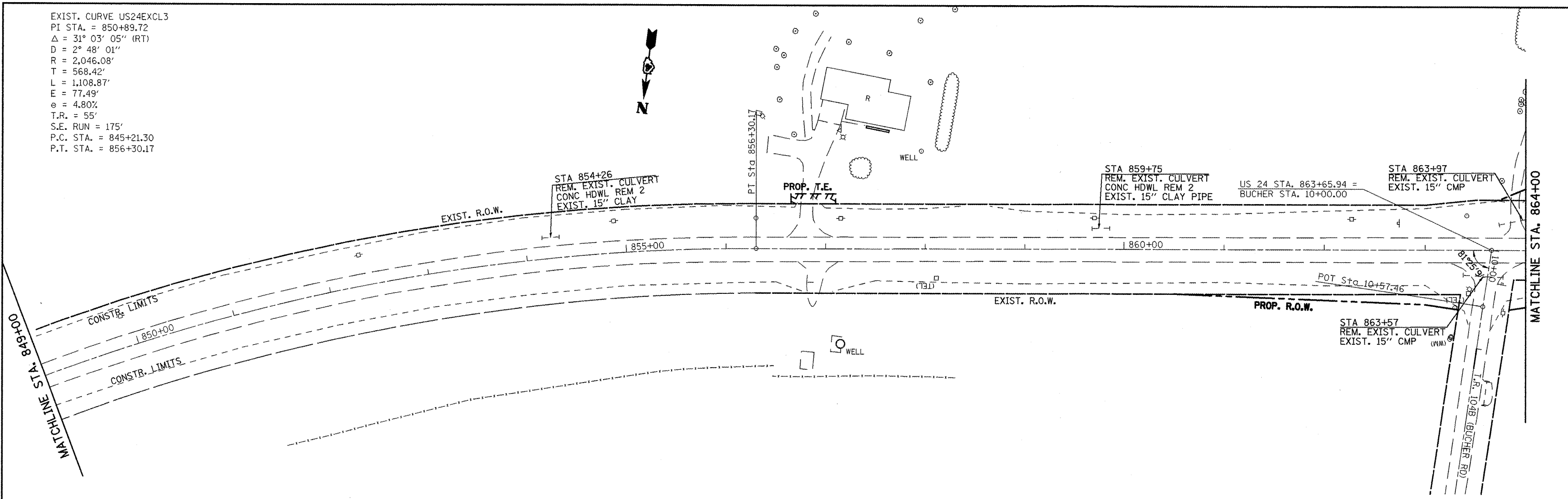


EXIST. CURVE US24EXCL3
 PI STA. = 850+89.72
 $\Delta = 31^\circ 03' 05''$ (RT)
 $D = 2^\circ 48' 01''$
 $R = 2,046.08'$
 $T = 568.42'$
 $L = 1,108.87'$
 $E = 77.49'$
 $\theta = 4.80\%$
 $T.R. = 55'$
 $S.E. RUN = 175'$
 $P.C. STA. = 845+21.30$
 $P.T. STA. = 856+30.17$



FILE NAME = plan01.dgn	USER NAME = jochuma.jg	DESIGNED - KJH	REVISED -
		DRAWN - JGJ	REVISED -
	PLOT SCALE = 100.0000' / IN.	CHECKED - KJH	REVISED -
	PLOT DATE = 3/12/2010	DATE -	REVISED -

**STATE OF ILLINOIS
 DEPARTMENT OF TRANSPORTATION**

EXISTING AND REMOVAL

SCALE: SHEET NO. 7 OF 7 SHEETS STA. 849+00 TO STA. 871+90.00

F.A.P. RTE. 317	SECTION 16W-2,RS-4,17W-1,RS-3	COUNTY FULTON	TOTAL SHEETS 240	SHEET NO. 42
FED. ROAD DIST. NO. ILLINOIS FED. AID PROJECT			CONTRACT NO. 88703	